

# V&V Reference Report

## L2 ASCDS Version : 7.6.8

Observation 60748 - L2 Version 001  
Chandra X-Ray Center

L2 Processing Date : Aug 1 2006

## Contents

<b>1</b>	<b>Front</b>	<b>2</b>
<b>2</b>	<b>OBI</b>	<b>3</b>
2.1	OBI . . . . .	3
2.1.1	Images . . . . .	3
2.1.2	Bias . . . . .	3
2.1.3	Parameters . . . . .	4
2.1.4	Events . . . . .	4
2.2	Compared Parameters . . . . .	5
2.3	Aspect . . . . .	6
2.4	Star Slots . . . . .	8
2.5	FID Slots . . . . .	8
<b>A</b>	<b>Summary</b>	<b>9</b>
A.1	Status . . . . .	9
A.2	Comments . . . . .	9

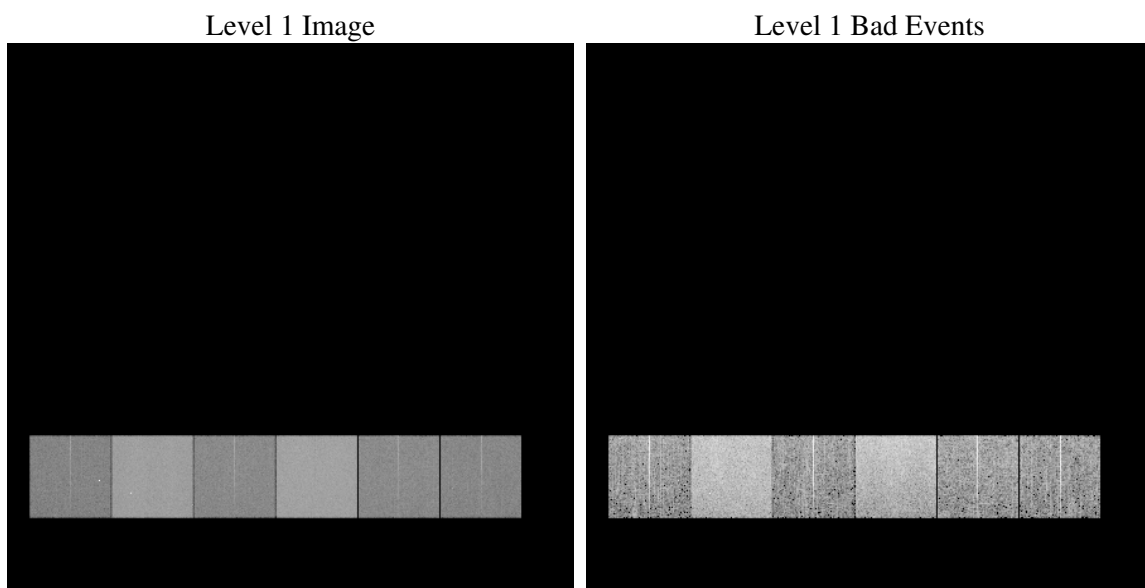
# 1 Front

seq_num	&#160
obs_id	60748
title	ACIS-456789 diagnostics
observer	CHANDRA engineering request/realtime commanding
object	&#160
dtcycle	0
cycle	P
ra_targ	0.0
dec_targ	0.0
ra_nom	239.9756308922
dec_nom	-9.9843870450563
roll_nom	114.05606590385
revision	2
ontime	8415.999968648
livetime	8309.4315095381
ontime4	3782.2846851945
ontime5	8415.999968648
ontime6	4255.4707691669
ontime7	8415.999968648
ontime8	4284.6389303207
ontime9	4047.1619679034
l2events	1233826

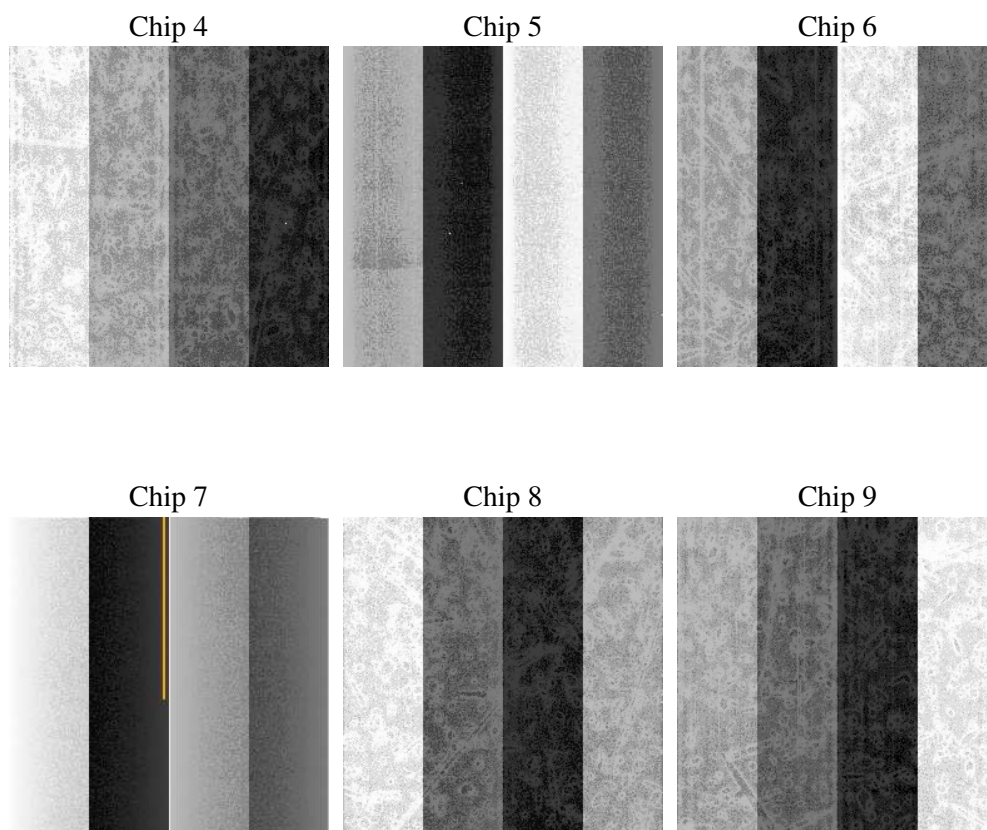
## 2 OBI

### 2.1 OBI

#### 2.1.1 Images



#### 2.1.2 Bias



### 2.1.3 Parameters

obi_num	0
ascdsver	7.6.8
caldsver	3.2.2
date	2006-08-01T12:18:31
revision	2

sched_exp_time	0.0
ontime	8462.2594774067
ontime4	3804.9718954265
ontime5	8462.2594774067
ontime6	4271.6760165095
ontime7	8462.2594774067
ontime8	4307.3261903822
ontime9	4070.7346349359
l1events	1539489

### 2.1.4 Events

	ccd 4	ccd 5	ccd 6	ccd 7	ccd 8	ccd 9
level 1 events	174711	361682	205842	395518	211282	190454
rejected events	29446	65198	29749	59420	32886	29140
rejected %	16%	18%	14%	15%	15%	15%

	ccd 4	ccd 5	ccd 6	ccd 7	ccd 8	ccd 9
grade 0 events	85939	32334	96646	59654	99009	90297
	49%	8%	46%	15%	46%	47%
grade 1 events	614	108	431	160	489	480
	0%	0%	0%	0%	0%	0%
grade 2 events	22583	143259	30392	103458	31085	27576
	12%	39%	14%	26%	14%	14%
grade 3 events	9533	9764	10879	24379	11436	10125
	5%	2%	5%	6%	5%	5%
grade 4 events	9693	9127	10860	24112	11488	10248
	5%	2%	5%	6%	5%	5%
grade 5 events	1791	6774	1982	7358	2415	1981
	1%	1%	0%	1%	1%	1%
grade 6 events	18414	103574	28059	126351	26359	23914
	10%	28%	13%	31%	12%	12%
grade 7 events	26144	56742	26593	50046	29001	25833
	14%	15%	12%	12%	13%	13%

## 2.2 Compared Parameters

Parameter	Planned	Actual	Parameter	Planned	Actual
Instrument	ACIS	ACIS	Obspar format version number	6	6
Detector	ACIS-456789	ACIS-456789	Obspar file type	PREDICTED	ACTUAL
Grating	NONE	NONE	Obspar update status	NONE	UPDATED
Data mode	FAINT	FAINT	On-chip summing requested	N	N
Observation mode	SECONDARY	SECONDARY	Subarray requested	NONE	NONE
Pointing RA	0	239.9756308922003	Alternating exposures requested	N	N
Pointing Dec	0	-9.984387045056291	Primary exposure time	0.000000	3.2
Pointing Roll	0.0	114.0560659038547			
SIM focus pos (mm)	-0.684267	-0.6828225247311905			
SIM defocus (mm)	0	0.8505141146731063			
SIM translation stage pos (mm)	-190.132523	250.466033080201			
SIM translation stage offset (mm)	0	-0.01005468664627074			
Observation start time	168642015.499536	168642014.47482			
Observation start date	2003-05-06T21:00:15	2003-05-06T21:00:14			
Observation end time	168654231.450051	168654230.42533			
Observation end date	2003-05-07T00:23:51	2003-05-07T00:23:50			
Read mode	TIMED	TIMED			

## 2.3 Aspect



## **2.4 Star Slots**

## **2.5 FID Slots**



## A Summary

### A.1 Status

V&V Scientist	Jen Lauer
V&V Date (YYYY-MM-DD)	2006.08.01
V&V Edition	1
V&V Disposition and Status	OK
V&V Charge Time	8.41599996

### A.2 Comments

The ACIS focal plane temperature was above calibration limits for the first 4 ksec of the observation.