

V&V Reference Report

L2 ASCDS Version : 7.6.8

Observation 60716 - L2 Version 001
Chandra X-Ray Center

L2 Processing Date : Aug 3 2006

Contents

1	Front	2
2	OBI	3
2.1	OBI	3
2.1.1	Images	3
2.1.2	Bias	3
2.1.3	Parameters	4
2.1.4	Events	4
2.2	Compared Parameters	5
2.3	Aspect	6
2.4	Star Slots	8
2.5	FID Slots	8
A	Summary	9
A.1	Status	9
A.2	Comments	9

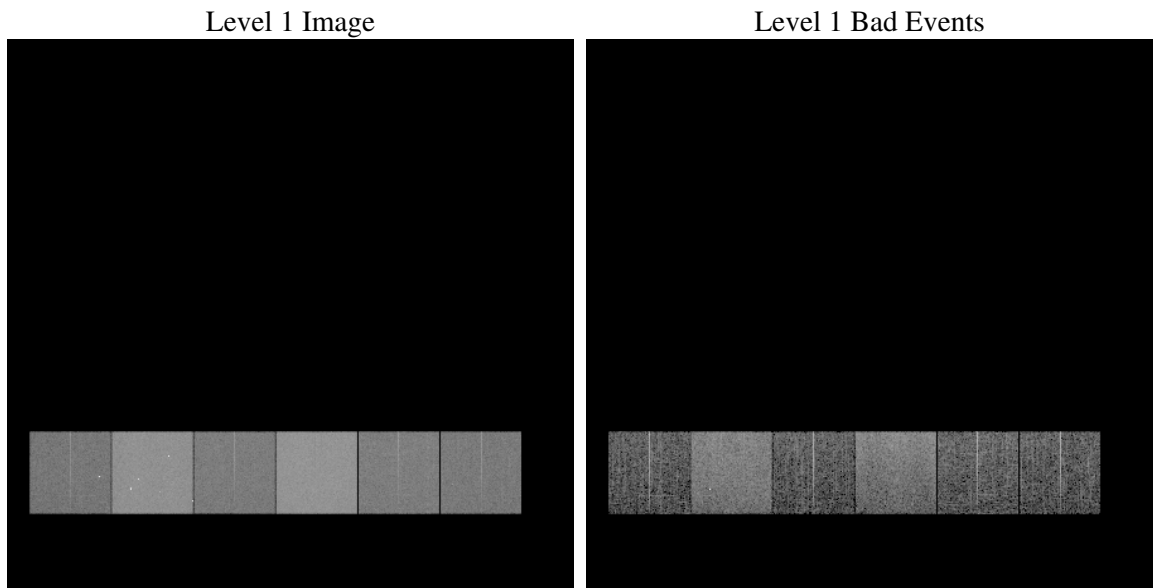
1 Front

seq_num	
obs_id	60716
title	ACIS-456789 diagnostics
observer	CHANDRA engineering request/realtime commanding
object	
dtcycle	0
cycle	P
ra_targ	0.0
dec_targ	0.0
ra_nom	257.52344946201
dec_nom	-39.177937979516
roll_nom	17.636152327864
revision	2
ontime	7793.4851783216
livetime	7694.7993763203
ontime4	3622.4693176746
ontime5	7793.5262183249
ontime6	3982.17904526
ontime7	7793.4851783216
ontime8	4092.4551994801
ontime9	3868.6211386919
l2events	1145044

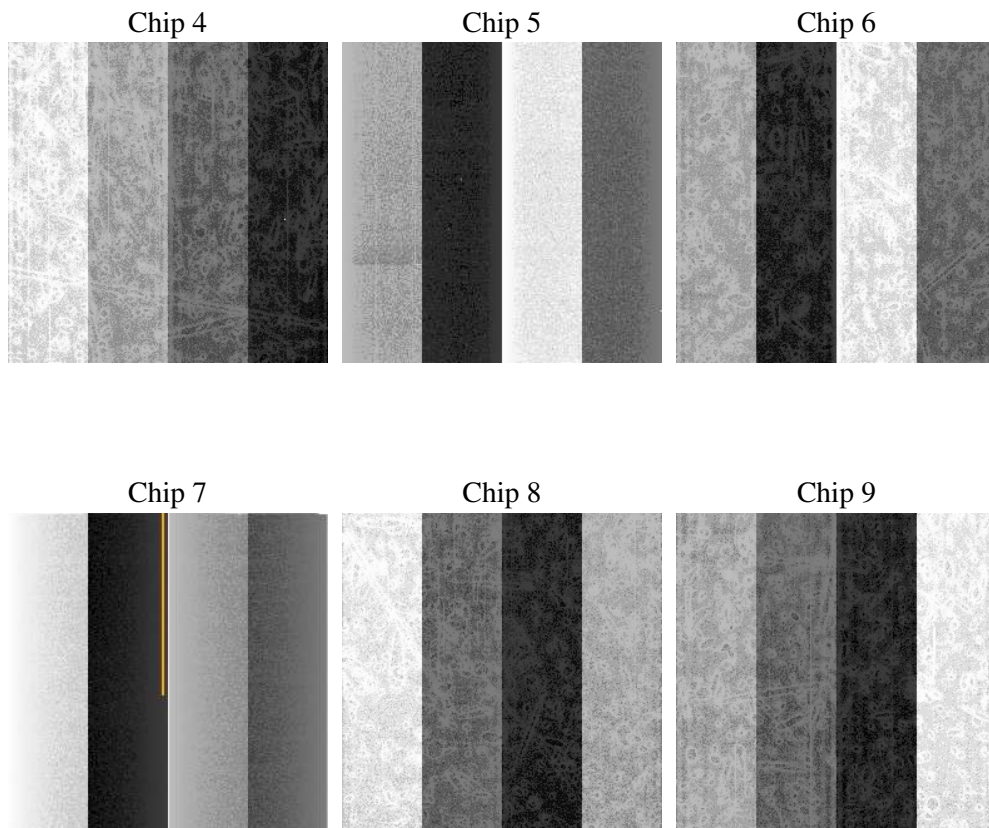
2 OBI

2.1 OBI

2.1.1 Images



2.1.2 Bias



2.1.3 Parameters

obi_num	2
ascdsver	7.6.8.1
caldbver	3.2.2
date	2006-08-03T16:50:01
revision	2

sched_exp_time	0.0
ontime	7794.6115304828
ontime4	3623.4725498259
ontime5	7794.6115304828
ontime6	3983.2233174145
ontime7	7794.6115304828
ontime8	4093.4173916578
ontime9	3869.7885308564
l1events	1419789

2.1.4 Events

	ccd 4	ccd 5	ccd 6	ccd 7	ccd 8	ccd 9
level 1 events	164056	333755	188730	357881	198166	177201
rejected events	25822	56954	25960	50673	29425	25681
rejected %	15%	17%	13%	14%	14%	14%

	ccd 4	ccd 5	ccd 6	ccd 7	ccd 8	ccd 9
grade 0 events	80449	36339	88786	55288	92895	83773
	49%	10%	47%	15%	46%	47%
grade 1 events	508	108	449	128	458	428
	0%	0%	0%	0%	0%	0%
grade 2 events	21965	129243	28223	92617	29440	26010
	13%	38%	14%	25%	14%	14%
grade 3 events	9144	9876	10110	22944	10516	9692
	5%	2%	5%	6%	5%	5%
grade 4 events	9127	9308	10103	22245	10922	9638
	5%	2%	5%	6%	5%	5%
grade 5 events	1618	6276	1918	6444	2202	1923
	0%	1%	1%	1%	1%	1%
grade 6 events	17549	92035	25548	114114	24968	22407
	10%	27%	13%	31%	12%	12%
grade 7 events	23696	50570	23593	44101	26765	23330
	14%	15%	12%	12%	13%	13%

2.2 Compared Parameters

Parameter	Planned	Actual	Parameter	Planned	Actual
Instrument	ACIS	ACIS	Obspar format version number	6	6
Detector	ACIS-456789	ACIS-456789	Obspar file type	PREDICTED	ACTUAL
Grating	NONE	NONE	Obspar update status	NONE	UPDATED
Data mode	FAINT	FAINT	On-chip summing requested	N	N
Observation mode	SECONDARY	SECONDARY	Subarray requested	NONE	NONE
Pointing RA	0	257.5234494620142	Alternating exposures requested	N	N
Pointing Dec	0	-39.17793797951638	Primary exposure time	0.000000	3.2
Pointing Roll	0.0	17.6361523278641			
SIM focus pos (mm)	-0.684267	-0.7809083437167272			
SIM defocus (mm)	0	0.7524282956875696			
SIM translation stage pos (mm)	-190.132523	250.466033080201			
SIM translation stage offset (mm)	0	-0.01005468664627074			
Observation start time	171099768.803652	171099767.77894			
Observation start date	2003-06-04T07:42:49	2003-06-04T07:42:47			
Observation end time	171111954.004169	171111952.97945			
Observation end date	2003-06-04T11:05:54	2003-06-04T11:05:52			
Read mode	TIMED	TIMED			

2.3 Aspect

2.4 Star Slots

2.5 FID Slots

A Summary

A.1 Status

V&V Scientist	Beth Sundheim
V&V Date (YYYY-MM-DD)	2006.08.03
V&V Edition	1
V&V Disposition and Status	OK
V&V Charge Time	7.79348517

A.2 Comments