

V&V Reference Report

L2 ASCDS Version : 7.6.8.1

Observation 60691 - L2 Version 001
Chandra X-Ray Center

L2 Processing Date : Aug 7 2006

Contents

1	Front	2
2	OBI	3
2.1	OBI	3
2.1.1	Images	3
2.1.2	Bias	3
2.1.3	Parameters	4
2.1.4	Events	4
2.2	Compared Parameters	5
2.3	Aspect	6
2.4	Star Slots	8
2.5	FID Slots	8
A	Summary	9
A.1	Status	9
A.2	Comments	9

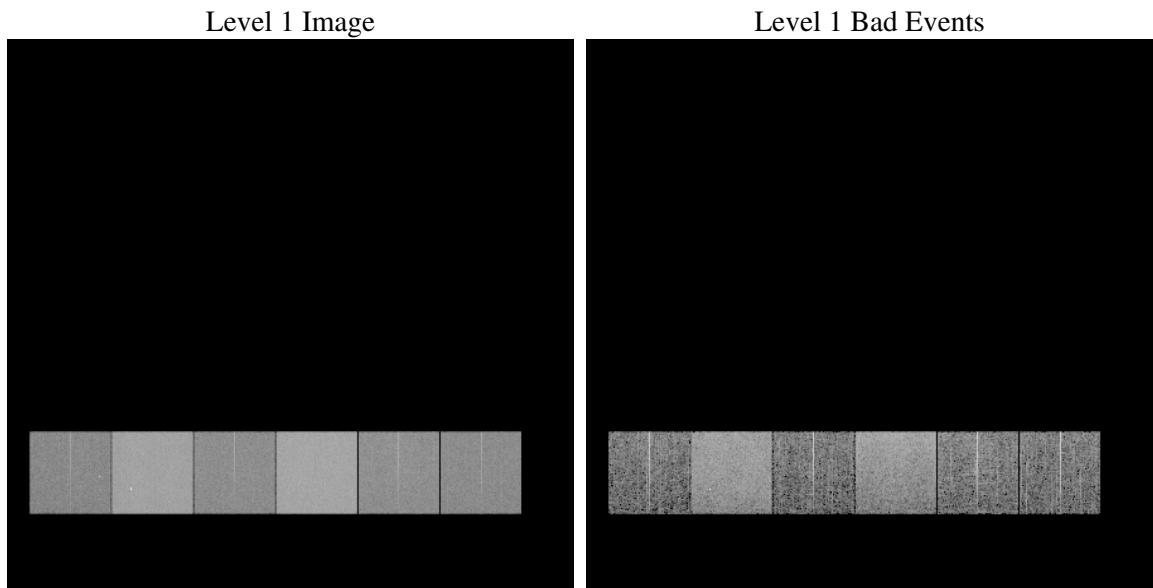
1 Front

seq_num	
obs_id	60691
title	ACIS-456789 diagnostics
observer	CHANDRA engineering request/realtime commanding
object	
dtcycle	0
cycle	P
ra_targ	0.0
dec_targ	0.0
ra_nom	284.99932763444
dec_nom	-37.771412085755
roll_nom	58.171359493297
revision	2
ontime	8460.7999684811
livetime	8353.664224798
ontime4	4015.6372748613
ontime5	8460.7999684811
ontime6	4326.7542462945
ontime7	8460.7999684811
ontime8	4532.6743260026
ontime9	4232.6417937279
l2events	1238893

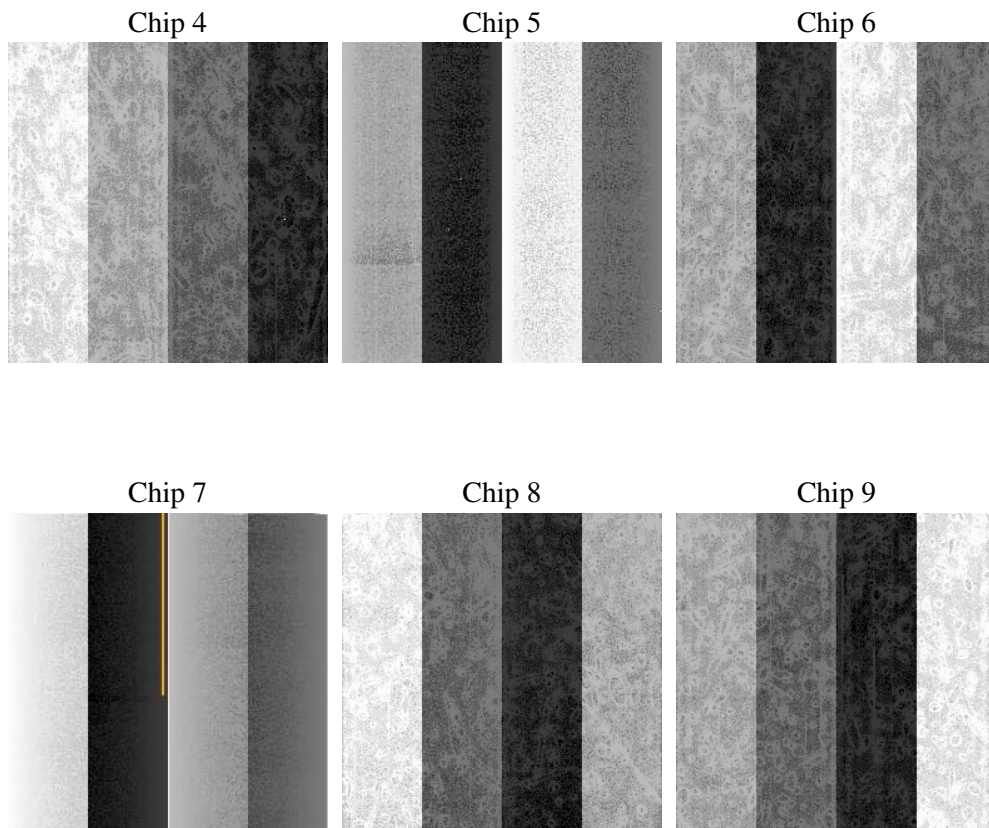
2 OBI

2.1 OBI

2.1.1 Images



2.1.2 Bias



2.1.3 Parameters

obi_num	0
ascdsver	7.6.8.1
caldsver	3.2.2
date	2006-08-07T07:30:43
revision	2

sched_exp_time	0.0
ontime	8462.2614293694
ontime4	4015.6372748613
ontime5	8462.2614293694
ontime6	4326.7738771439
ontime7	8462.2614293694
ontime8	4534.1982360184
ontime9	4232.7845445871
l1events	1538691

2.1.4 Events

	ccd 4	ccd 5	ccd 6	ccd 7	ccd 8	ccd 9
level 1 events	179108	357034	202636	388352	217488	194073
rejected events	28729	62492	28179	56494	33233	29844
rejected %	16%	17%	13%	14%	15%	15%

	ccd 4	ccd 5	ccd 6	ccd 7	ccd 8	ccd 9
grade 0 events	87375	34124	95268	59962	101591	91101
	48%	9%	47%	15%	46%	46%
grade 1 events	603	87	461	143	548	486
	0%	0%	0%	0%	0%	0%
grade 2 events	24098	140068	29919	100250	32101	28112
	13%	39%	14%	25%	14%	14%
grade 3 events	9986	10672	10913	24542	11973	10518
	5%	2%	5%	6%	5%	5%
grade 4 events	9885	9492	11008	23998	11701	10475
	5%	2%	5%	6%	5%	5%
grade 5 events	1830	6852	2105	7265	2445	2094
	1%	1%	1%	1%	1%	1%
grade 6 events	19035	100186	27349	123106	26889	24023
	10%	28%	13%	31%	12%	12%
grade 7 events	26296	55553	25613	49086	30240	27264
	14%	15%	12%	12%	13%	14%

2.2 Compared Parameters

Parameter	Planned	Actual	Parameter	Planned	Actual
Instrument	ACIS	ACIS	Obspar format version number	6	6
Detector	ACIS-456789	ACIS-456789	Obspar file type	PREDICTED	ACTUAL
Grating	NONE	NONE	Obspar update status	NONE	UPDATED
Data mode	FAINT	FAINT	On-chip summing requested	N	N
Observation mode	SECONDARY	SECONDARY	Subarray requested	NONE	NONE
Pointing RA	0	284.9993276344403	Alternating exposures requested	N	N
Pointing Dec	0	-37.77141208575463	Primary exposure time	0.000000	3.2
Pointing Roll	0.0	58.17135949329698			
SIM focus pos (mm)	-0.684267	-0.7809083437167272			
SIM defocus (mm)	0	0.7524282956875696			
SIM translation stage pos (mm)	-190.132523	250.466033080201			
SIM translation stage offset (mm)	0	-0.01005468664627074			
Observation start time	172061075.344473	172061074.31976			
Observation start date	2003-06-15T10:44:35	2003-06-15T10:44:34			
Observation end time	172084029.195449	172084028.17073			
Observation end date	2003-06-15T17:07:09	2003-06-15T17:07:08			
Read mode	TIMED	TIMED			

2.3 Aspect

2.4 Star Slots

2.5 FID Slots

A Summary

A.1 Status

V&V Scientist	Jen Lauer
V&V Date (YYYY-MM-DD)	2006.08.07
V&V Edition	1
V&V Disposition and Status	OK
V&V Charge Time	8.46079996

A.2 Comments