

# V&V Reference Report

## L2 ASCDS Version : 7.6.8

Observation 60598 - L2 Version 001  
Chandra X-Ray Center

L2 Processing Date : Jul 12 2006

## Contents

<b>1</b>	<b>Front</b>	<b>2</b>
<b>2</b>	<b>OBI</b>	<b>3</b>
2.1	OBI . . . . .	3
2.1.1	Images . . . . .	3
2.1.2	Bias . . . . .	3
2.1.3	Parameters . . . . .	4
2.1.4	Events . . . . .	4
2.2	Compared Parameters . . . . .	5
2.3	Aspect . . . . .	6
2.4	Star Slots . . . . .	8
2.5	FID Slots . . . . .	8
<b>A</b>	<b>Summary</b>	<b>9</b>
A.1	Status . . . . .	9
A.2	Comments . . . . .	9

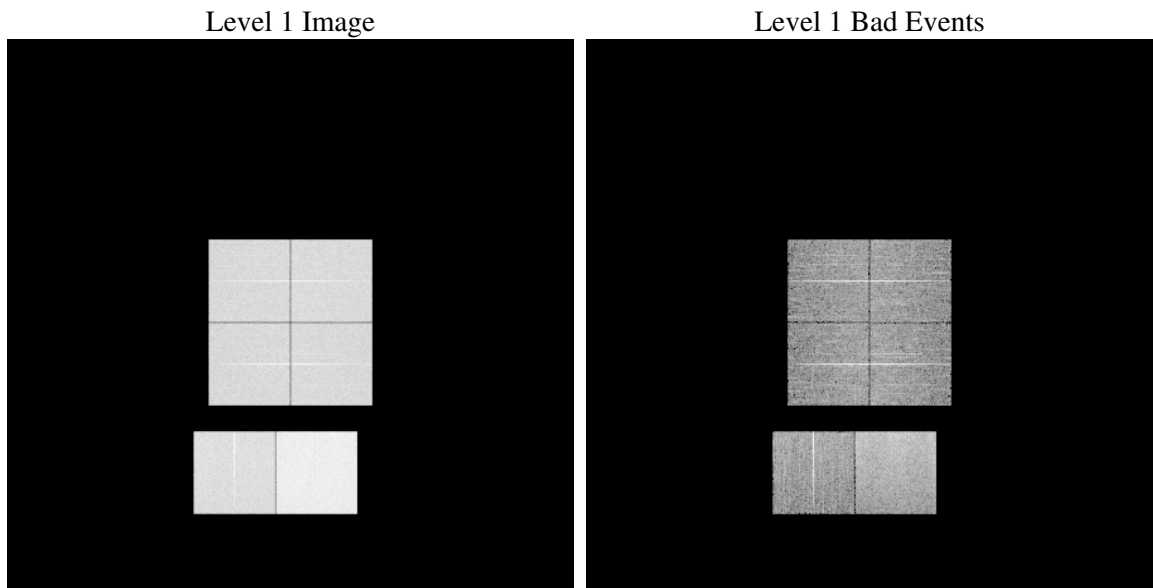
# 1 Front

seq_num	&#160
obs_id	60598
title	ACIS-012367 diagnostics
observer	CHANDRA engineering request/realtime commanding
object	&#160
dtcycle	0
cycle	P
ra_targ	0.0
dec_targ	0.0
ra_nom	253.11814427862
dec_nom	56.271237447221
roll_nom	238.88567901204
revision	2
ontime	12198.318033993
livetime	12043.855586102
ontime0	7456.7825529575
ontime1	7680.410716325
ontime2	7197.5034883916
ontime3	7288.2517516613
ontime6	7923.4828677177
ontime7	12198.318033993
l2events	1800208

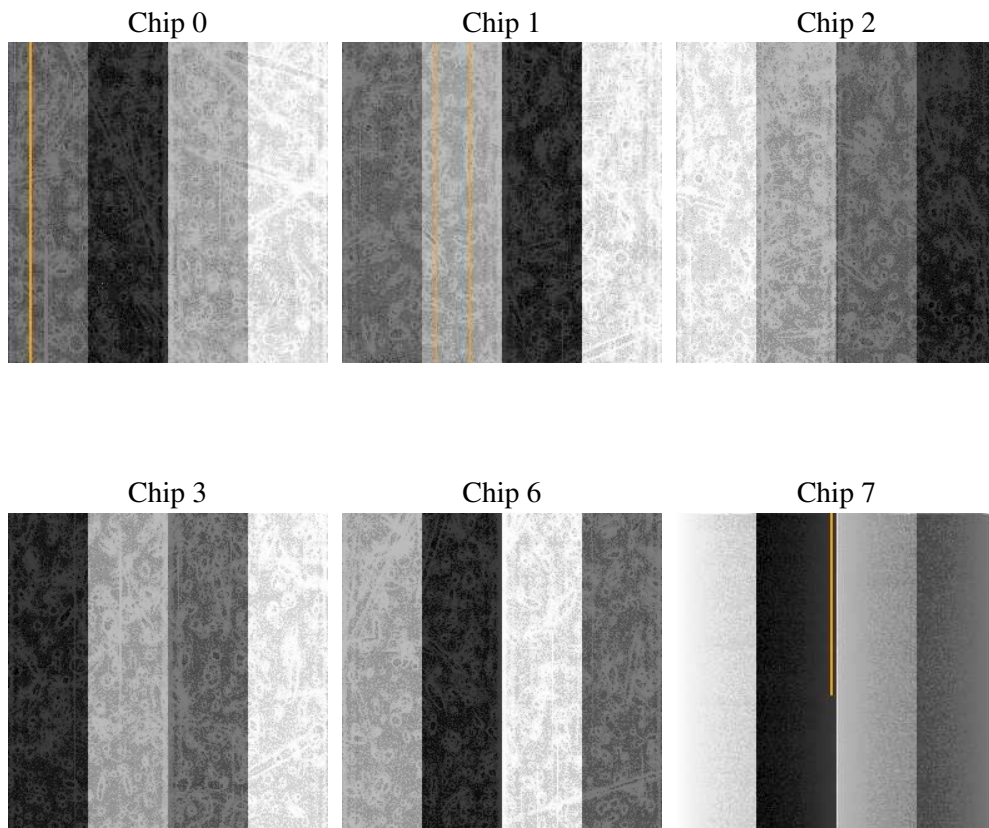
## 2 OBI

### 2.1 OBI

#### 2.1.1 Images



#### 2.1.2 Bias



### 2.1.3 Parameters

obi_num	0
ascdsver	7.6.8
caldbver	3.2.2
date	2006-07-12T10:35:12
revision	2

sched_exp_time	0.0
ontime	12202.36643067
ontime0	7460.8309496343
ontime1	7684.4591130018
ontime2	7201.5518850684
ontime3	7292.3001483381
ontime6	7927.5312643945
ontime7	12202.36643067
l1events	2208055

### 2.1.4 Events

	ccd 0	ccd 1	ccd 2	ccd 3	ccd 6	ccd 7
level 1 events	323416	333087	318886	323443	363978	545245
rejected events	46153	47010	47175	48697	53033	80353
rejected %	14%	14%	14%	15%	14%	14%

	ccd 0	ccd 1	ccd 2	ccd 3	ccd 6	ccd 7
grade 0 events	153360	157558	152914	154537	169120	85142
	47%	47%	47%	47%	46%	15%
grade 1 events	847	723	862	933	813	236
	0%	0%	0%	0%	0%	0%
grade 2 events	48106	50560	46038	47073	53746	139897
	14%	15%	14%	14%	14%	25%
grade 3 events	17850	18183	17746	17681	19238	34773
	5%	5%	5%	5%	5%	6%
grade 4 events	17791	18029	17507	17955	19378	34165
	5%	5%	5%	5%	5%	6%
grade 5 events	3239	3366	3026	3338	3705	10413
	1%	1%	0%	1%	1%	1%
grade 6 events	40272	41867	37618	37827	49588	171043
	12%	12%	11%	11%	13%	31%
grade 7 events	41951	42801	43175	44099	48390	69576
	12%	12%	13%	13%	13%	12%

## 2.2 Compared Parameters

Parameter	Planned	Actual	Parameter	Planned	Actual
Instrument	ACIS	ACIS	Obspar format version number	6	6
Detector	ACIS-012367	ACIS-012367	Obspar file type	PREDICTED	ACTUAL
Grating	NONE	NONE	Obspar update status	NONE	UPDATED
Data mode	FAINT	FAINT	On-chip summing requested	N	N
Observation mode	SECONDARY	SECONDARY	Subarray requested	NONE	NONE
Pointing RA	0	253.1181442786155	Alternating exposures requested	N	N
Pointing Dec	0	56.27123744722098	Primary exposure time	0.000000	3.2
Pointing Roll	0.0	238.885679012044			
SIM focus pos (mm)	-0.782348	-0.6828225247311905			
SIM defocus (mm)	0	0.8505141146731063			
SIM translation stage pos (mm)	-233.592463	250.466033080201			
SIM translation stage offset (mm)	0	-0.01005468664627074			
Observation start time	176587772.787225	176587771.76253			
Observation start date	2003-08-06T20:09:33	2003-08-06T20:09:31			
Observation end time	176610964.438214	176610963.41352			
Observation end date	2003-08-07T02:36:04	2003-08-07T02:36:03			
Read mode	TIMED	TIMED			

## 2.3 Aspect



## **2.4 Star Slots**

## **2.5 FID Slots**



## A Summary

### A.1 Status

V&V Scientist	Jen Lauer
V&V Date (YYYY-MM-DD)	2006.07.12
V&V Edition	1
V&V Disposition and Status	OK
V&V Charge Time	12.198318

### A.2 Comments