

V&V Reference Report

L2 ASCDS Version : 7.6.8

Observation 60583 - L2 Version 001
Chandra X-Ray Center

L2 Processing Date : Jul 11 2006

Contents

1	Front	2
2	OBI	3
2.1	OBI	3
2.1.1	Images	3
2.1.2	Bias	3
2.1.3	Parameters	4
2.1.4	Events	4
2.2	Compared Parameters	5
2.3	Aspect	6
2.4	Star Slots	8
2.5	FID Slots	8
A	Summary	9
A.1	Status	9
A.2	Comments	9

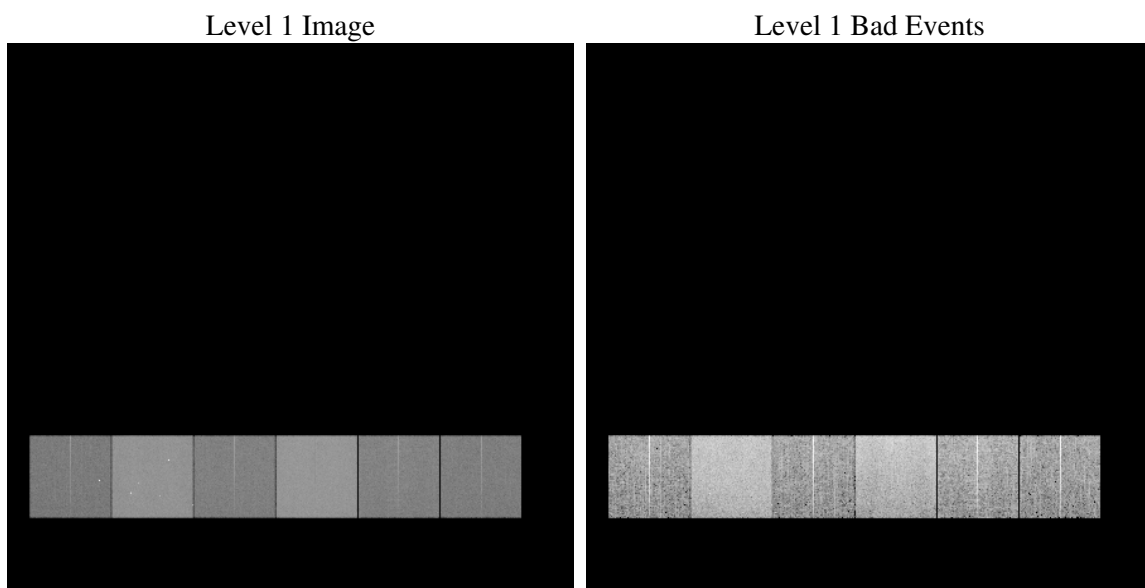
1 Front

seq_num	
obs_id	60583
title	ACIS-456789 diagnostics
observer	CHANDRA engineering request/realtime commanding
object	
dtcycle	0
cycle	P
ra_targ	0.0
dec_targ	0.0
ra_nom	214.05973664853
dec_nom	67.982182595619
roll_nom	288.58393688888
revision	2
ontime	11568.14405936
livetime	11421.66125378
ontime4	5676.1810427904
ontime5	11571.199956894
ontime6	6304.892793119
ontime7	11568.14405936
ontime8	6431.3739088476
ontime9	6087.6245473623
l2events	1676555

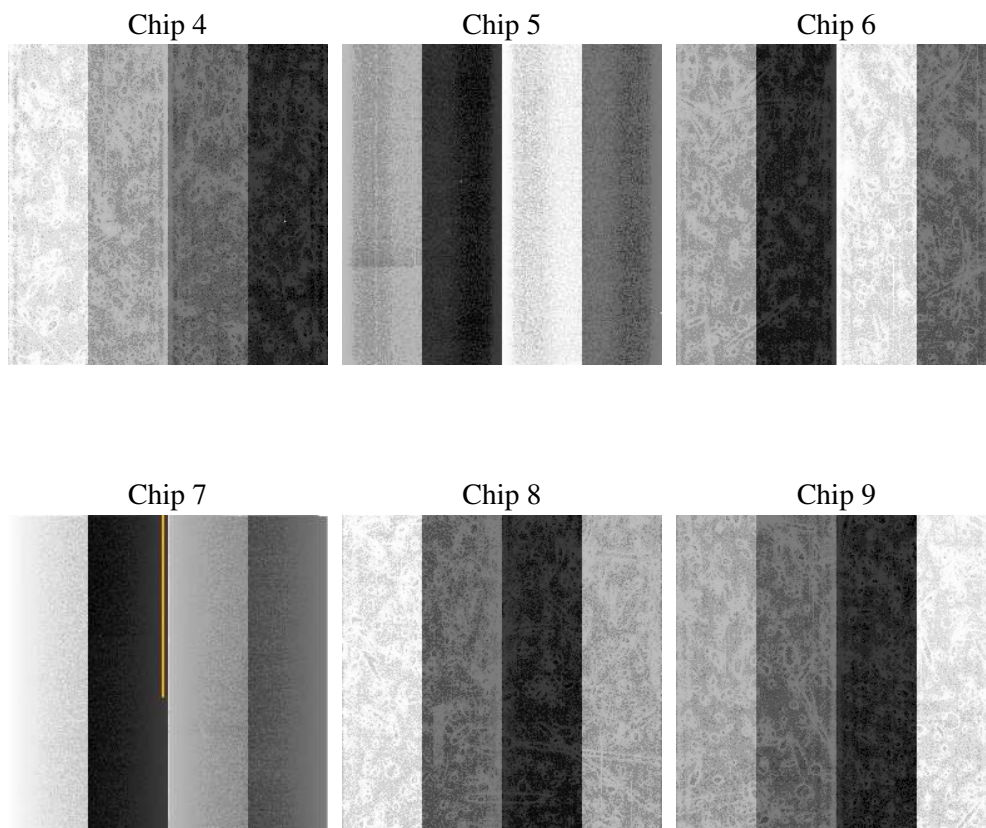
2 OBI

2.1 OBI

2.1.1 Images



2.1.2 Bias



2.1.3 Parameters

obi_num	0
ascdsver	7.6.8
caldbver	3.2.2
date	2006-07-11T14:45:11
revision	2

sched_exp_time	0.0
ontime	11570.367964804
ontime4	5678.2818282247
ontime5	11573.608944982
ontime6	6307.0346185565
ontime7	11570.367964804
ontime8	6433.4336543083
ontime9	6089.8894928098
l1events	2092472

2.1.4 Events

	ccd 4	ccd 5	ccd 6	ccd 7	ccd 8	ccd 9
level 1 events	245757	475554	286476	515529	300895	268261
rejected events	40261	82713	41386	75775	48215	40304
rejected %	16%	17%	14%	14%	16%	15%

	ccd 4	ccd 5	ccd 6	ccd 7	ccd 8	ccd 9
grade 0 events	119687	50895	134078	80617	138752	125771
	48%	10%	46%	15%	46%	46%
grade 1 events	853	193	590	192	652	684
	0%	0%	0%	0%	0%	0%
grade 2 events	32630	184129	42291	131821	44211	38828
	13%	38%	14%	25%	14%	14%
grade 3 events	13751	13614	15120	32909	16400	14722
	5%	2%	5%	6%	5%	5%
grade 4 events	13540	13492	15006	32721	16286	14647
	5%	2%	5%	6%	5%	5%
grade 5 events	2519	9080	2966	9912	3412	2949
	1%	1%	1%	1%	1%	1%
grade 6 events	25993	130824	38728	161796	37144	34104
	10%	27%	13%	31%	12%	12%
grade 7 events	36784	73327	37697	65561	44038	36556
	14%	15%	13%	12%	14%	13%

2.2 Compared Parameters

Parameter	Planned	Actual	Parameter	Planned	Actual
Instrument	ACIS	ACIS	Obspar format version number	6	6
Detector	ACIS-456789	ACIS-456789	Obspar file type	PREDICTED	ACTUAL
Grating	NONE	NONE	Obspar update status	NONE	UPDATED
Data mode	FAINT	FAINT	On-chip summing requested	N	N
Observation mode	SECONDARY	SECONDARY	Subarray requested	NONE	NONE
Pointing RA	0	214.0597366485316	Alternating exposures requested	N	N
Pointing Dec	0	67.98218259561853	Primary exposure time	0.000000	3.2
Pointing Roll	0.0	288.5839368888829			
SIM focus pos (mm)	-0.684267	-0.6828225247311905			
SIM defocus (mm)	0	0.8505141146731063			
SIM translation stage pos (mm)	-190.132523	250.466033080201			
SIM translation stage offset (mm)	0	-0.01005468664627074			
Observation start time	177730092.286063	177730091.26135			
Observation start date	2003-08-20T01:28:12	2003-08-20T01:28:11			
Observation end time	177752572.587025	177752571.56232			
Observation end date	2003-08-20T07:42:53	2003-08-20T07:42:51			
Read mode	TIMED	TIMED			

2.3 Aspect

2.4 Star Slots

2.5 FID Slots

A Summary

A.1 Status

V&V Scientist	Beth Sundheim
V&V Date (YYYY-MM-DD)	2006.07.11
V&V Edition	1
V&V Disposition and Status	OK
V&V Charge Time	11.568144

A.2 Comments