

V&V Reference Report

L2 ASCDS Version : 7.6.8

Observation 60581 - L2 Version 001
Chandra X-Ray Center

L2 Processing Date : Jul 11 2006

Contents

1	Front	2
2	OBI	3
2.1	OBI	3
2.1.1	Images	3
2.1.2	Bias	3
2.1.3	Parameters	4
2.1.4	Events	4
2.2	Compared Parameters	5
2.3	Aspect	6
2.4	Star Slots	8
2.5	FID Slots	8
A	Summary	9
A.1	Status	9
A.2	Comments	9

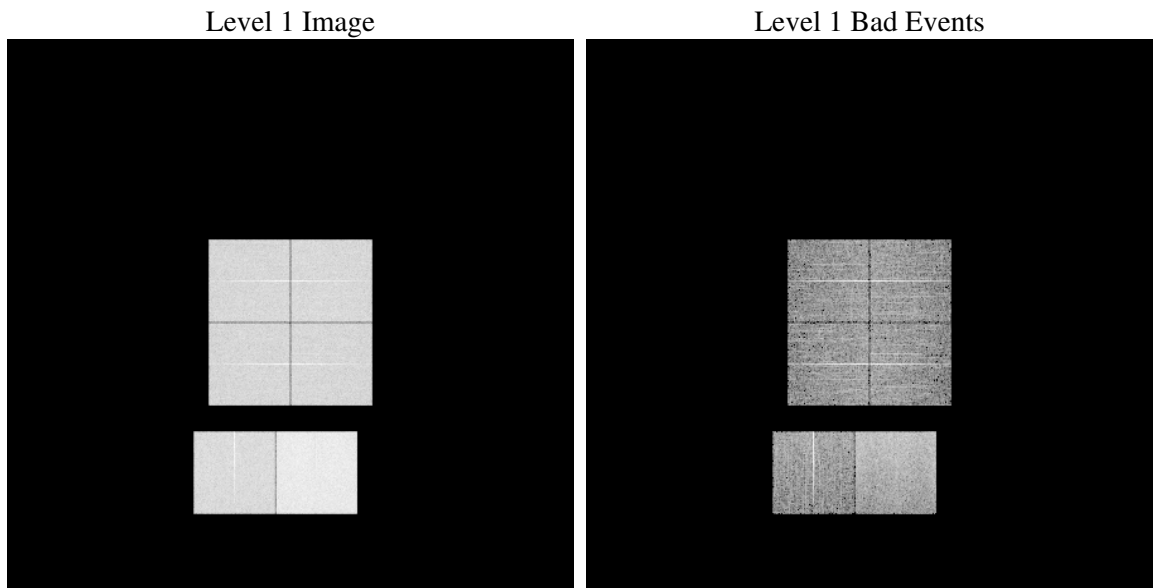
1 Front

seq_num	
obs_id	60581
title	ACIS-012367 diagnostics
observer	CHANDRA engineering request/realtime commanding
object	
dtcycle	0
cycle	P
ra_targ	0.0
dec_targ	0.0
ra_nom	109.9663785942
dec_nom	-33.993658615022
roll_nom	134.28151735621
revision	2
ontime	8463.9999684691
livetime	8356.8237044595
ontime0	5362.3985071182
ontime1	5483.3565073907
ontime2	5161.458311379
ontime3	5193.8671769202
ontime6	5637.8800099194
ontime7	8463.9999684691
l2events	1244895

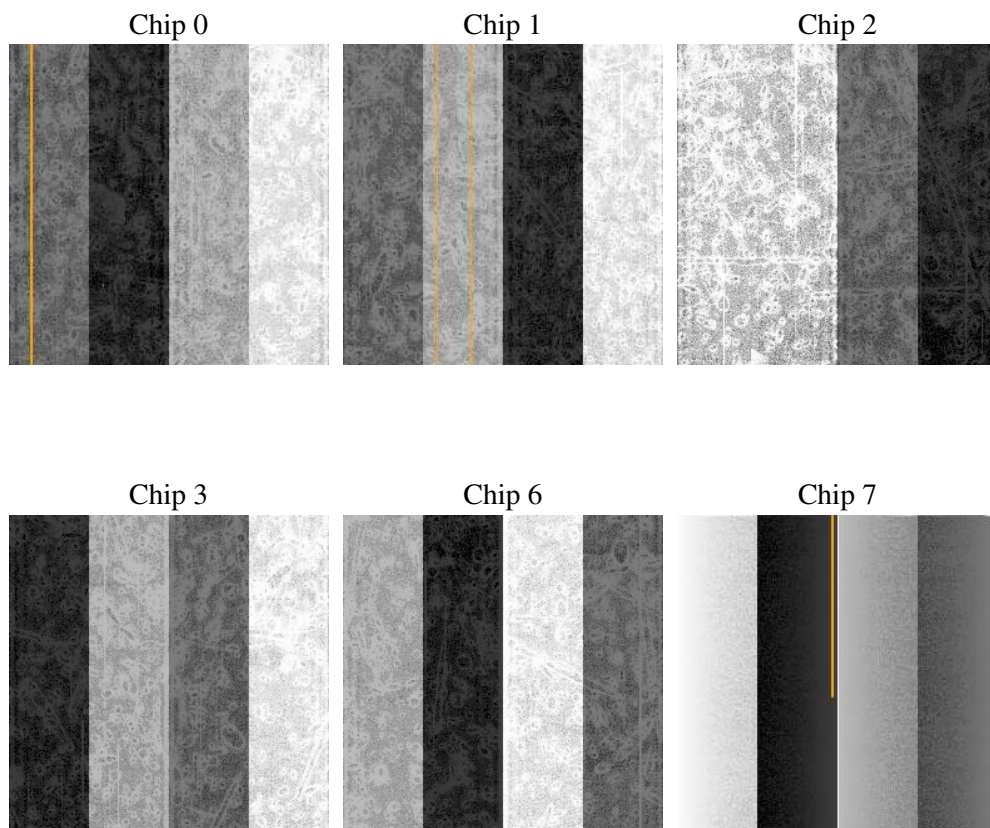
2 OBI

2.1 OBI

2.1.1 Images



2.1.2 Bias



2.1.3 Parameters

obi_num	0
ascdsver	7.6.8
caldbver	3.2.2
date	2006-07-11T14:39:11
revision	2

sched_exp_time	0.0
ontime	8465.4871120453
ontime0	5363.8856506944
ontime1	5483.8012801111
ontime2	5162.9454549551
ontime3	5195.3543204963
ontime6	5639.3671534956
ontime7	8465.4871120453
l1events	1539543

2.1.4 Events

	ccd 0	ccd 1	ccd 2	ccd 3	ccd 6	ccd 7
level 1 events	227918	234962	225637	226831	252141	372054
rejected events	33060	35007	35064	34461	37574	60297
rejected %	14%	14%	15%	15%	14%	16%

	ccd 0	ccd 1	ccd 2	ccd 3	ccd 6	ccd 7
grade 0 events	108135	109327	107910	108677	116434	50640
	47%	46%	47%	47%	46%	13%
grade 1 events	519	469	600	596	517	114
	0%	0%	0%	0%	0%	0%
grade 2 events	33727	36291	31459	32120	37644	98142
	14%	15%	13%	14%	14%	26%
grade 3 events	12511	12321	12281	12501	12942	21239
	5%	5%	5%	5%	5%	5%
grade 4 events	12270	12457	12164	12682	12929	20899
	5%	5%	5%	5%	5%	5%
grade 5 events	2206	2449	2137	2217	2554	7202
	0%	1%	0%	0%	1%	1%
grade 6 events	28215	29559	26759	26390	34618	120837
	12%	12%	11%	11%	13%	32%
grade 7 events	30335	32089	32327	31648	34503	52981
	13%	13%	14%	13%	13%	14%

2.2 Compared Parameters

Parameter	Planned	Actual	Parameter	Planned	Actual
Instrument	ACIS	ACIS	Obspar format version number	6	6
Detector	ACIS-012367	ACIS-012367	Obspar file type	PREDICTED	ACTUAL
Grating	NONE	NONE	Obspar update status	NONE	UPDATED
Data mode	FAINT	FAINT	On-chip summing requested	N	N
Observation mode	SECONDARY	SECONDARY	Subarray requested	NONE	NONE
Pointing RA	0	109.966378594196	Alternating exposures requested	N	N
Pointing Dec	0	-33.99365861502183	Primary exposure time	0.000000	3.2
Pointing Roll	0.0	134.2815173562136			
SIM focus pos (mm)	-0.782348	-0.6828225247311905			
SIM defocus (mm)	0	0.8505141146731063			
SIM translation stage pos (mm)	-233.592463	250.466033080201			
SIM translation stage offset (mm)	0	-0.01005468664627074			
Observation start time	177770784.787804	177770783.7631			
Observation start date	2003-08-20T12:46:25	2003-08-20T12:46:23			
Observation end time	177793219.988763	177793218.96406			
Observation end date	2003-08-20T19:00:20	2003-08-20T19:00:18			
Read mode	TIMED	TIMED			

2.3 Aspect

2.4 Star Slots

2.5 FID Slots

A Summary

A.1 Status

V&V Scientist	Beth Sundheim
V&V Date (YYYY-MM-DD)	2006.07.11
V&V Edition	1
V&V Disposition and Status	OK
V&V Charge Time	8.46399996

A.2 Comments

Focal plane temperature is warmer than -118 degrees during entire observation. The ACIS calibrations are not verified or necessarily applicable for focal plane temperatures warmer than -118 degrees.