

V&V Reference Report

L2 ASCDS Version : 7.6.11.10

Observation 60573 - L2 Version 3
Chandra X-Ray Center

L2 Processing Date : Feb 4 2009

Contents

1	Front	2
2	OBI	3
2.1	OBI	3
2.1.1	Images	3
2.1.2	Bias	3
2.1.3	Parameters	4
2.1.4	Events	4
2.2	Compared Parameters	5
2.3	Star Slots	6
2.4	FID Slots	6
A	Summary	7
A.1	Status	7
A.2	Comments	7

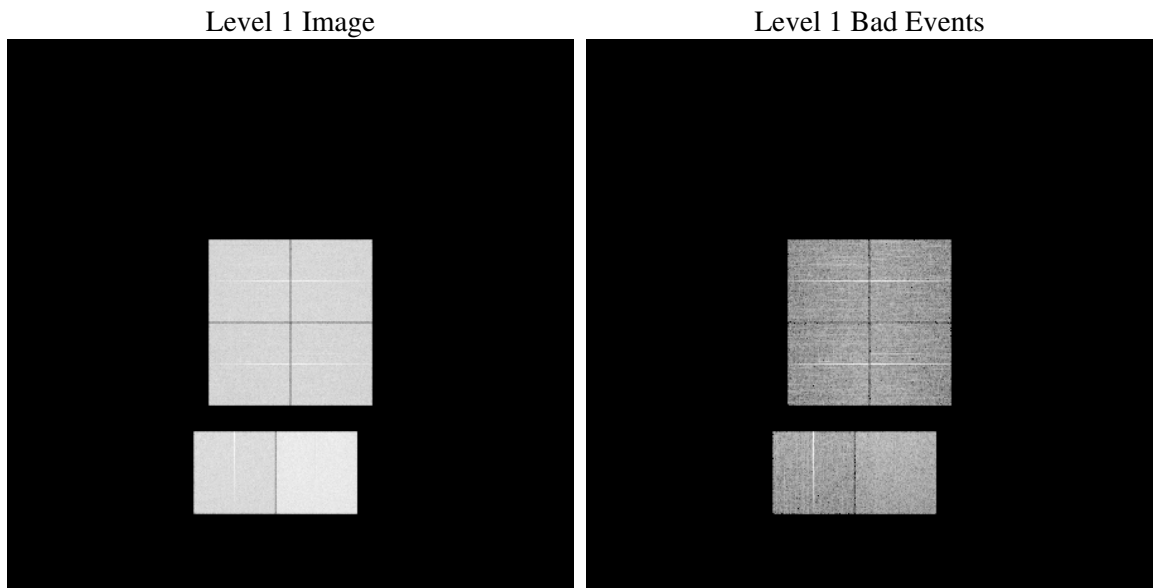
1 Front

seq_num	
obs_id	60573
title	ACIS-012367 diagnostics
observer	CHANDRA engineering request/realtime commanding
object	
dtcycle	0
cycle	P
ra_targ	0.0
dec_targ	0.0
ra_nom	331.97887494904
dec_nom	19.979377114225
roll_nom	193.13795669451
revision	3
ontime	12035.199955165
livetime	11882.803006606
ontime0	7595.0252077281
ontime1	7669.6092608273
ontime2	7232.0762633681
ontime3	7280.6921916902
ontime6	8068.3313627541
ontime7	12035.199955165
l2events	1787315

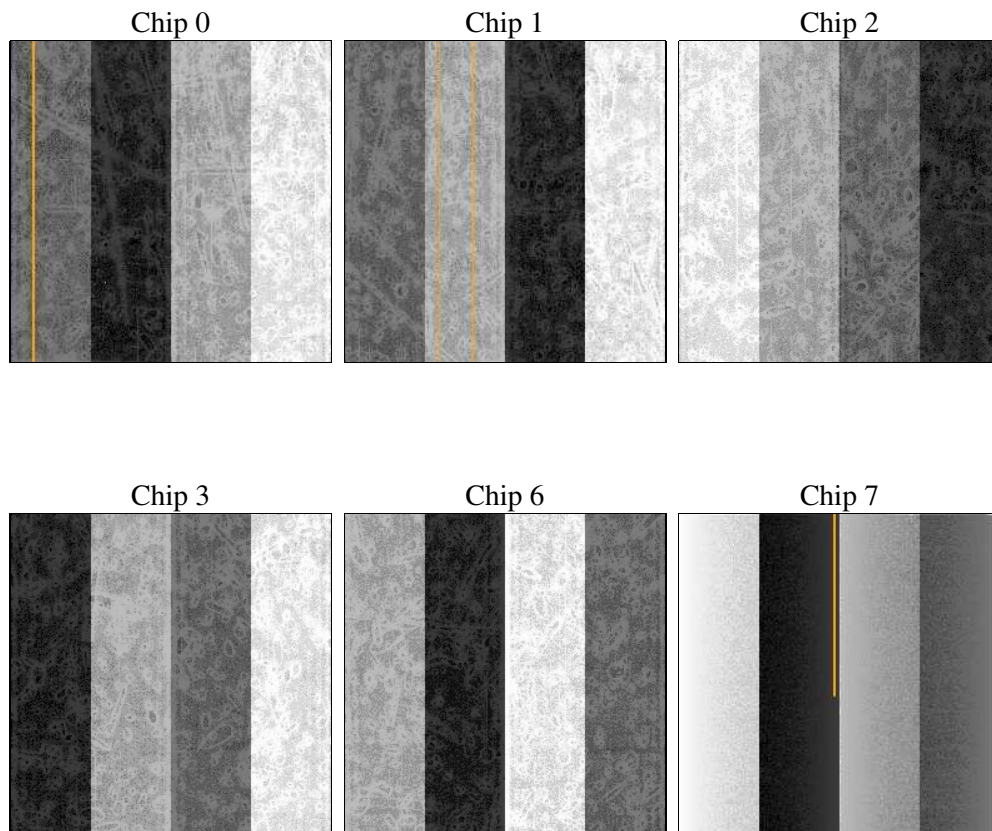
2 OBI

2.1 OBI

2.1.1 Images



2.1.2 Bias



2.1.3 Parameters

obi_num	0
ascdsver	7.6.11.10
caldbver	3.5.1
date	2009-02-04T16:49:44
revision	3

sched_exp_time	10800
ontime	12035.199955165
ontime0	7595.0252077281
ontime1	7669.6092608273
ontime2	7232.0762633681
ontime3	7280.6921916902
ontime6	8068.3313627541
ontime7	12035.199955165
l1events	2207123

2.1.4 Events

	ccd 0	ccd 1	ccd 2	ccd 3	ccd 6	ccd 7
level 1 events	328545	332621	318774	323135	366378	537670
rejected events	51309	52223	52673	53259	56010	70135
rejected %	15%	15%	16%	16%	15%	13%

	ccd 0	ccd 1	ccd 2	ccd 3	ccd 6	ccd 7
grade 0 events	155146	156125	151482	153962	171615	117924
	47%	46%	47%	47%	46%	21%
grade 1 events	853	700	886	854	828	330
	0%	0%	0%	0%	0%	0%
grade 2 events	48726	50283	45465	47109	54390	104264
	14%	15%	14%	14%	14%	19%
grade 3 events	18148	18077	17758	17777	19627	47627
	5%	5%	5%	5%	5%	8%
grade 4 events	18175	18179	17375	17512	19599	47535
	5%	5%	5%	5%	5%	8%
grade 5 events	3255	3337	3027	3341	3724	11893
	0%	1%	0%	1%	1%	2%
grade 6 events	40822	41592	37868	37631	49407	157063
	12%	12%	11%	11%	13%	29%
grade 7 events	43420	44328	44913	44949	47188	51034
	13%	13%	14%	13%	12%	9%

2.2 Compared Parameters

Parameter	Planned	Actual	Parameter	Planned	Actual
Instrument	ACIS	ACIS	Obspar format version number	6	6
Detector	ACIS-012367	ACIS-012367	Obspar file type	PREDICTED	ACTUAL
Grating	NONE	NONE	Obspar update status	OVERRIDE	OVERRIDE
Data mode	FAINT	FAINT	Number of optional ACIS chips dropped	0	0
Observation mode	SECONDARY	SECONDARY	On-chip summing requested	N	N
Pointing RA	331.9788749490438	331.9788749490438	Subarray requested	NONE	NONE
Pointing Dec	19.97937711422452	19.97937711422452	Alternating exposures requested	N	N
Pointing Roll	193.1379566945103	193.1379566945103	Primary exposure time	3.2	3.2
SIM focus pos (mm)	-0.68282252473119	-0.68282252473119			
SIM defocus (mm)	0.8505140384245534	0.8505140384245534			
SIM translation stage pos (mm)	250.4660330802	250.4660330802			
SIM translation stage offset (mm)	-0.01005726120527584	-0.01005726120527584			
Observation start time	178643935.175172	178643935.175172			
Observation start date	2003-08-30T15:43:00	2003-08-30T15:18:55			
Observation end time	178657674.84492	178657674.84492			
Observation end date	2003-08-30T18:43:00	2003-08-30T19:07:54			
Read mode	TIMED	TIMED			

2.3 Star Slots

2.4 FID Slots

A Summary

A.1 Status

V&V Scientist	Craig Anderson
V&V Date (YYYY-MM-DD)	2009.02.04
V&V Edition	1
V&V Disposition and Status	OK
V&V Charge Time	12.035199955165

A.2 Comments

This obsid was reprocessed to correct minor errors in parameters used in processing. Some of these parameters cannot be determined automatically for this observation and were derived from spacecraft telemetry.