

# V&V Reference Report

## L2 ASCDS Version : 7.6.8

Observation 60571 - L2 Version 001  
Chandra X-Ray Center

L2 Processing Date : Jul 8 2006

## Contents

<b>1</b>	<b>Front</b>	<b>2</b>
<b>2</b>	<b>OBI</b>	<b>3</b>
2.1	OBI . . . . .	3
2.1.1	Images . . . . .	3
2.1.2	Bias . . . . .	3
2.1.3	Parameters . . . . .	4
2.1.4	Events . . . . .	4
2.2	Compared Parameters . . . . .	5
2.3	Aspect . . . . .	6
2.4	Star Slots . . . . .	8
2.5	FID Slots . . . . .	8
<b>A</b>	<b>Summary</b>	<b>9</b>
A.1	Status . . . . .	9
A.2	Comments . . . . .	9

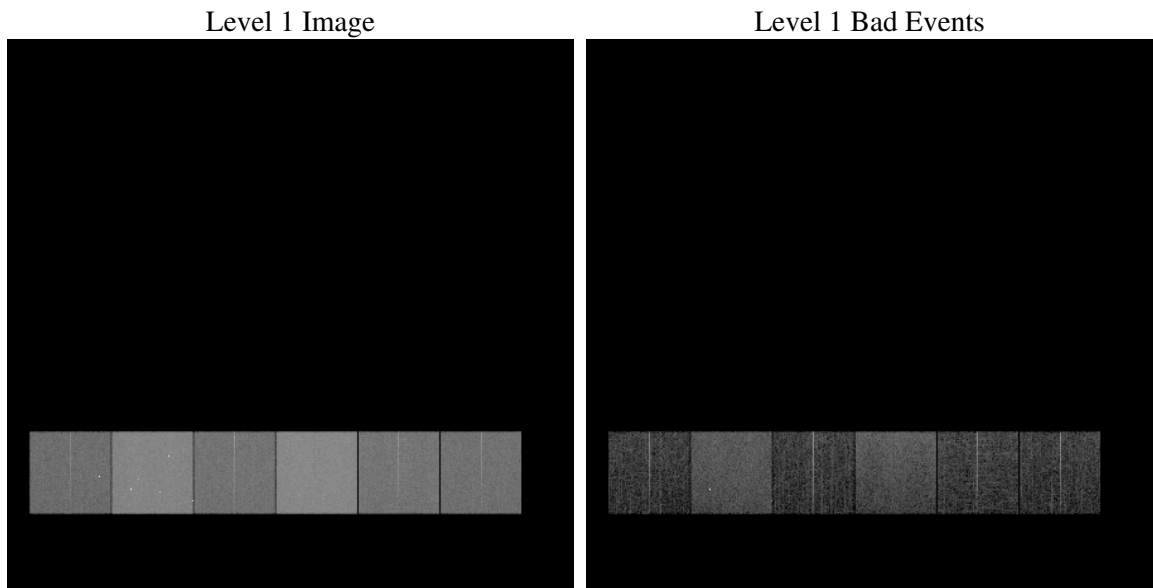
# 1 Front

seq_num	&#160
obs_id	60571
title	ACIS-456789 diagnostics
observer	CHANDRA engineering request/realtime commanding
object	&#160
dtcycle	0
cycle	P
ra_targ	0.0
dec_targ	0.0
ra_nom	332.00883132254
dec_nom	-7.0272340312926
roll_nom	254.93295005934
revision	2
ontime	8406.3999686837
livetime	8299.9530705539
ontime4	4176.9271493852
ontime5	8406.3999686837
ontime6	4624.1836266518
ontime7	8406.3999686837
ontime8	4734.377322346
ontime9	4455.2520838678
l2events	1216147

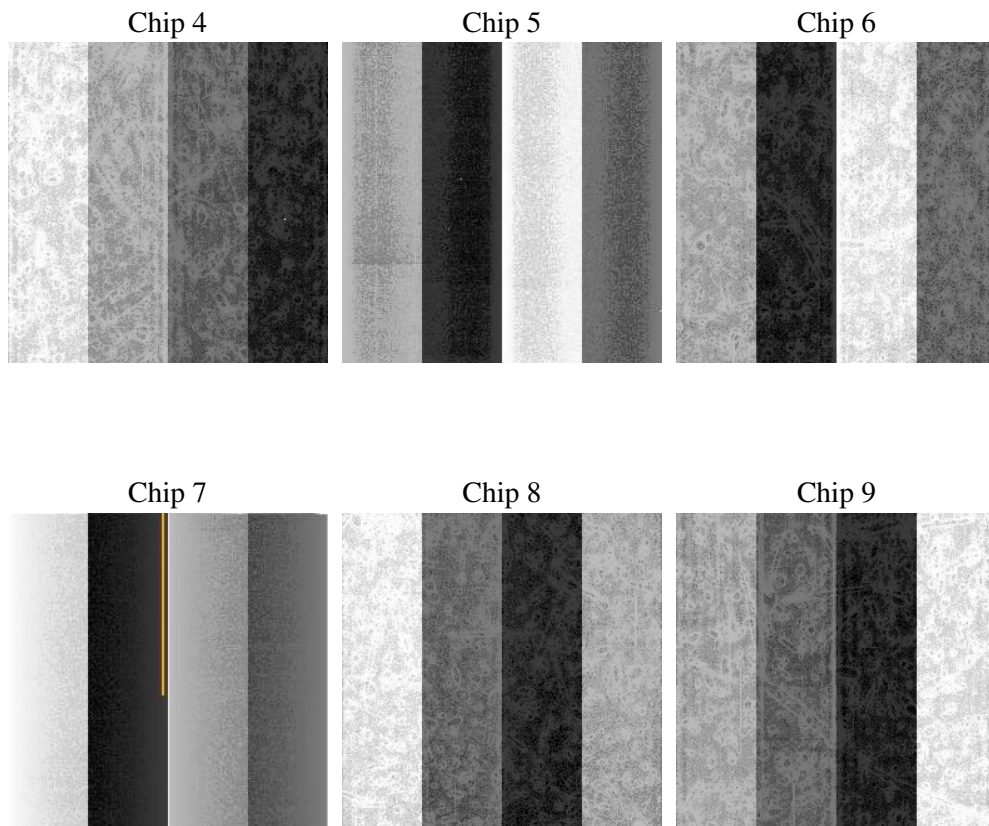
## 2 OBI

### 2.1 OBI

#### 2.1.1 Images



#### 2.1.2 Bias



### 2.1.3 Parameters

obi_num	0
ascdsver	7.6.8
caldbver	3.2.2
date	2006-07-08T03:59:48
revision	2

sched_exp_time	0.0
ontime	8462.2570920289
ontime4	4206.8564508259
ontime5	8462.2570920289
ontime6	4657.3539481461
ontime7	8462.2570920289
ontime8	4767.5475940704
ontime9	4488.8226370215
l1events	1537648

### 2.1.4 Events

	ccd 4	ccd 5	ccd 6	ccd 7	ccd 8	ccd 9
level 1 events	183057	348302	212379	374929	220171	198810
rejected events	31863	65890	33619	58237	35139	31947
rejected %	17%	18%	15%	15%	15%	16%

	ccd 4	ccd 5	ccd 6	ccd 7	ccd 8	ccd 9
grade 0 events	88456	34052	97688	56469	101676	92763
	48%	9%	45%	15%	46%	46%
grade 1 events	616	161	487	138	496	495
	0%	0%	0%	0%	0%	0%
grade 2 events	24300	134775	31284	96537	32518	28619
	13%	38%	14%	25%	14%	14%
grade 3 events	10189	9262	11199	23280	11910	10593
	5%	2%	5%	6%	5%	5%
grade 4 events	9925	8848	11120	22909	12185	10594
	5%	2%	5%	6%	5%	5%
grade 5 events	1928	8025	2285	7020	2511	2279
	1%	2%	1%	1%	1%	1%
grade 6 events	19405	97352	28753	119531	27854	25502
	10%	27%	13%	31%	12%	12%
grade 7 events	28238	55827	29563	49045	31021	27965
	15%	16%	13%	13%	14%	14%

## 2.2 Compared Parameters

Parameter	Planned	Actual	Parameter	Planned	Actual
Instrument	ACIS	ACIS	Obspar format version number	6	6
Detector	ACIS-456789	ACIS-456789	Obspar file type	PREDICTED	ACTUAL
Grating	NONE	NONE	Obspar update status	NONE	UPDATED
Data mode	FAINT	FAINT	On-chip summing requested	N	N
Observation mode	SECONDARY	SECONDARY	Subarray requested	NONE	NONE
Pointing RA	0	332.008831322536	Alternating exposures requested	N	N
Pointing Dec	0	-7.027234031292585	Primary exposure time	0.000000	3.2
Pointing Roll	0.0	254.932950059343			
SIM focus pos (mm)	-0.684267	-0.6828225247311905			
SIM defocus (mm)	0	0.8505141146731063			
SIM translation stage pos (mm)	-190.132523	250.466033080201			
SIM translation stage offset (mm)	0	-0.01005468664627074			
Observation start time	178686716.627003	178686715.60228			
Observation start date	2003-08-31T03:11:57	2003-08-31T03:11:55			
Observation end time	178711138.278048	178711137.25333			
Observation end date	2003-08-31T09:58:58	2003-08-31T09:58:57			
Read mode	TIMED	TIMED			

## 2.3 Aspect



## **2.4 Star Slots**

## **2.5 FID Slots**



## A Summary

### A.1 Status

V&V Scientist	Jen Lauer
V&V Date (YYYY-MM-DD)	2006.07.10
V&V Edition	1
V&V Disposition and Status	OK
V&V Charge Time	8.40639996

### A.2 Comments