

# V&V Reference Report

## L2 ASCDS Version : 8.4.5

Observation 60568 - L2 Version 3  
Chandra X-Ray Center

L2 Processing Date : Nov 2 2012

## Contents

<b>1</b>	<b>Front</b>	<b>2</b>
<b>2</b>	<b>OBI</b>	<b>3</b>
2.1	OBI . . . . .	3
2.1.1	Images . . . . .	3
2.1.2	Bias . . . . .	3
2.1.3	Parameters . . . . .	4
2.1.4	Events . . . . .	4
2.2	Compared Parameters . . . . .	5
2.3	Star Slots . . . . .	6
2.4	FID Slots . . . . .	6
<b>A</b>	<b>Summary</b>	<b>7</b>
A.1	Status . . . . .	7
A.2	Comments . . . . .	7

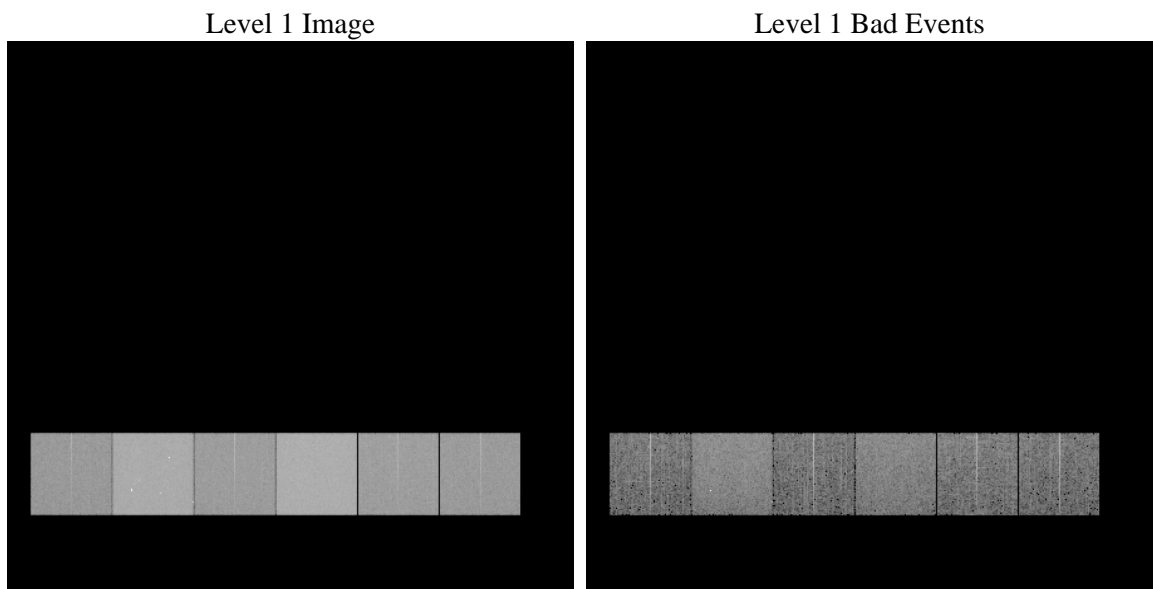
# 1 Front

seq_num	&#160	Sequence number
obs_id	60568	Observation id
title	ACIS-456789 diagnostics	Proposal title
observer	CHANDRA engineering request/realtime commanding	Principal investig
object	&#160	Source name
dtcycle	0	&#160
cycle	P	events from which exps? Prim/Second/Both
ra_targ	0.0	Observer's specified target RA [deg]
dec_targ	0.0	Observer's specified target Dec [deg]
ra_nom	115.9982003586	Nominal RA [deg]
dec_nom	47.028599431047	Nominal Dec [deg]
roll_nom	59.595207336518	Nominal Roll [deg]
revision	3	Processing version of data
ontime	8441.5999685526	Sum of GTIs [s]
livetime	8334.7073468295	Livetime [s]
ontime4	4187.4009114206	Sum of GTIs [s]
ontime5	8441.5999685526	Sum of GTIs [s]
ontime6	4562.1634411216	Sum of GTIs [s]
ontime7	8441.5999685526	Sum of GTIs [s]
ontime8	4662.6001876891	Sum of GTIs [s]
ontime9	4375.2141114771	Sum of GTIs [s]
l2events	1236276	Number of level 2 events

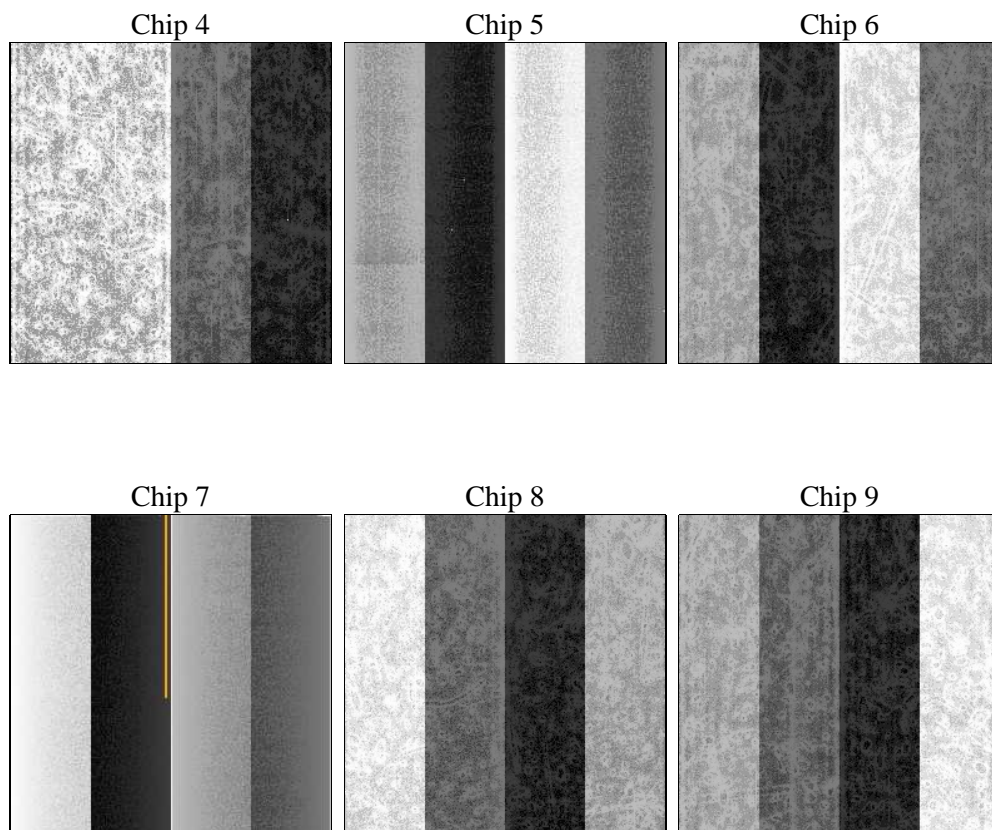
## 2 OBI

### 2.1 OBI

#### 2.1.1 Images



#### 2.1.2 Bias



### 2.1.3 Parameters

obi_num	0	Obi number	sched_exp_time	0.0	[s] Scheduled observation exposure time
ascdsver	8.4.5	Processing system revision	ontime	8441.5999685526	Sum of GTIs [s]
caldsver	4.5.2	&#160	ontime4	4187.4009114206	Sum of GTIs [s]
date	2012-11-02T23:57:52	Date and time of file creation	ontime5	8441.5999685526	Sum of GTIs [s]
revision	3	Processing version of data	ontime6	4562.1634411216	Sum of GTIs [s]
			ontime7	8441.5999685526	Sum of GTIs [s]
			ontime8	4662.6001876891	Sum of GTIs [s]
			ontime9	4375.2141114771	Sum of GTIs [s]
			l1events	1536717	Number of level 1 events

### 2.1.4 Events

	ccd 4	ccd 5	ccd 6	ccd 7	ccd 8	ccd 9		ccd 4	ccd 5	ccd 6	ccd 7	ccd 8	ccd 9
level 1 events	183984	349033	209508	378751	220178	195263	grade 0 events	88657	65940	97254	82551	101036	90981
rejected events	31580	56705	31381	46188	35664	30496		48%	18%	46%	21%	45%	46%
rejected %	17%	16%	14%	12%	16%	15%	grade 1 events	642	320	457	222	531	511
								0%	0%	0%	0%	0%	0%
							grade 2 events	24416	107857	30875	73020	32104	28525
								13%	30%	14%	19%	14%	14%
							grade 3 events	9981	16996	10976	33241	12031	10417
								5%	4%	5%	8%	5%	5%
							grade 4 events	10055	17104	10833	32744	11908	10269
								5%	4%	5%	8%	5%	5%
							grade 5 events	1979	9323	2199	8576	2479	2171
								1%	2%	1%	2%	1%	1%
							grade 6 events	19642	85008	28467	111620	27824	24935
								10%	24%	13%	29%	12%	12%
							grade 7 events	28612	46485	28447	36777	32265	27454
								15%	13%	13%	9%	14%	14%

## 2.2 Compared Parameters

Parameter	Planned	Actual
Instrument	ACIS	ACIS
Detector	ACIS-456789	ACIS-456789
Grating	NONE	NONE
Data mode	FAINT	FAINT
Observation mode	SECONDARY	SECONDARY
[deg] Pointing RA	0	115.998200358601
[deg] Pointing Dec	0	47.02859943104689
[deg] Pointing Roll	0.0	59.59520733651815
[mm] SIM focus pos	-0.684267	-0.6828225247311905
[mm] SIM defocus	0	0.8505141146731063
[mm] SIM translation stage pos	-190.132523	250.4635187648994
[mm] SIM translation stage offset	0	-0.007540371344731511
[s] Observation start time (MET)	178915437.186785	178915436.16208
Observation start date	2003-09-02T18:43:57	2003-09-02T18:43:56
[s] Observation end time (MET)	178937899.037745	178937898.01304
Observation end date	2003-09-03T00:58:19	2003-09-03T00:58:18
Read mode	TIMED	TIMED

Parameter	Planned	Actual
Obspar format version number	7	7
Obspar file type	PREDICTED	ACTUAL
Obspar update status	NONE	UPDATED
On-chip summing requested	N	N
Subarray requested	NONE	NONE
Alternating exposures requested	N	N
[s] Primary exposure time	0.000000	3.2

## 2.3 Star Slots

## 2.4 FID Slots

## **A Summary**

### **A.1 Status**

V&V Scientist	Jen Lauer
V&V Date (YYYY-MM-DD)	2012.12.06
V&V Edition	1
V&V Disposition and Status	OK
V&V Charge Time	8.4415999685526

### **A.2 Comments**