

V&V Reference Report

L2 ASCDS Version : 7.6.8

Observation 60559 - L2 Version 001
Chandra X-Ray Center

L2 Processing Date : Jul 5 2006

Contents

1	Front	2
2	OBI	3
2.1	OBI	3
2.1.1	Images	3
2.1.2	Bias	3
2.1.3	Parameters	4
2.1.4	Events	4
2.2	Compared Parameters	5
2.3	Aspect	6
2.4	Star Slots	8
2.5	FID Slots	8
A	Summary	9
A.1	Status	9
A.2	Comments	9

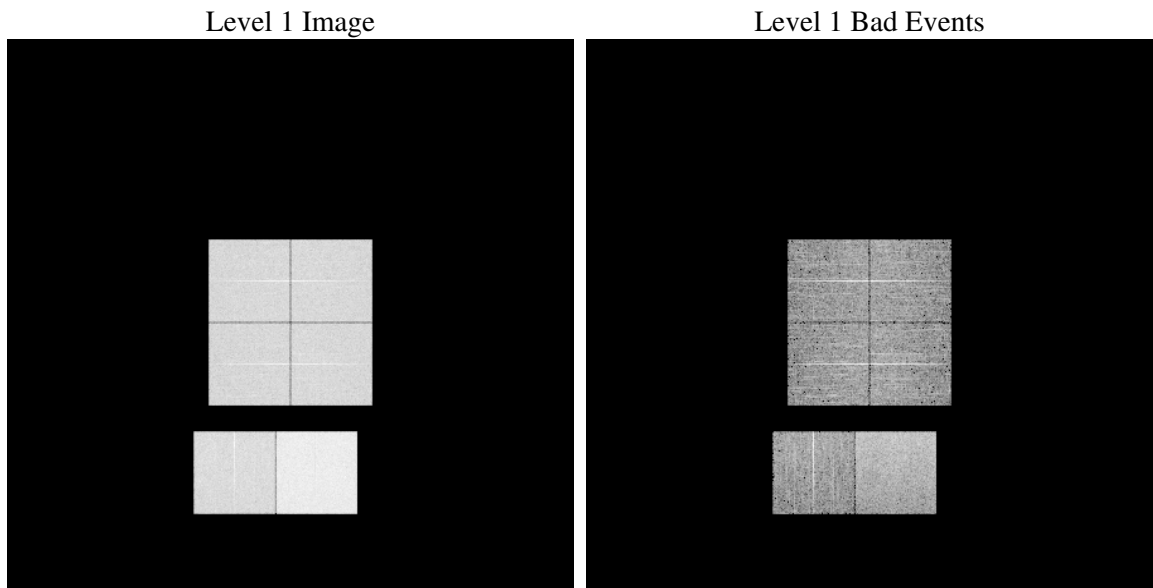
1 Front

seq_num	
obs_id	60559
title	ACIS-012367 diagnostics
observer	CHANDRA engineering request/realtime commanding
object	
dtcycle	0
cycle	P
ra_targ	0.0
dec_targ	0.0
ra_nom	341.0298929006
dec_nom	-16.99972787483
roll_nom	327.70591262587
revision	2
ontime	8387.1999687552
livetime	8280.9961925854
ontime0	5120.2984338403
ontime1	5120.2984943688
ontime2	4932.3008446097
ontime3	5029.9256452322
ontime6	5386.5767845213
ontime7	8387.1999687552
l2events	1240316

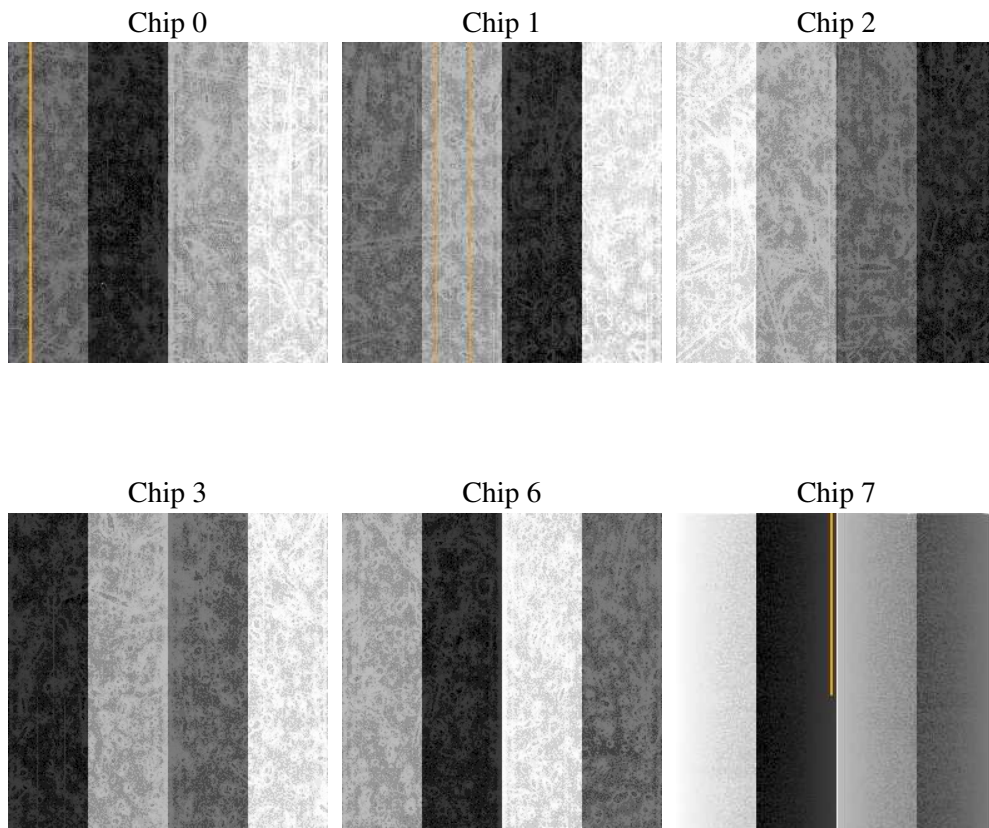
2 OBI

2.1 OBI

2.1.1 Images



2.1.2 Bias



2.1.3 Parameters

obi_num	0
ascdsver	7.6.8
caldbver	3.2.2
date	2006-07-06T00:11:02
revision	2

sched_exp_time	0.0
ontime	8462.2609525323
ontime0	5169.4316254556
ontime1	5169.4316362441
ontime2	4968.4909317791
ontime3	5078.6842301488
ontime6	5428.7101152539
ontime7	8462.2609525323
l1events	1539397

2.1.4 Events

	ccd 0	ccd 1	ccd 2	ccd 3	ccd 6	ccd 7
level 1 events	227336	228536	223204	228184	250066	382071
rejected events	34932	35944	35559	36554	37747	60256
rejected %	15%	15%	15%	16%	15%	15%

	ccd 0	ccd 1	ccd 2	ccd 3	ccd 6	ccd 7
grade 0 events	106811	106104	105726	108424	115703	58214
	46%	46%	47%	47%	46%	15%
grade 1 events	592	521	655	603	619	152
	0%	0%	0%	0%	0%	0%
grade 2 events	33868	34627	31998	33043	36516	98259
	14%	15%	14%	14%	14%	25%
grade 3 events	12489	12413	12182	12426	13395	23718
	5%	5%	5%	5%	5%	6%
grade 4 events	12513	12266	12299	12466	13363	23164
	5%	5%	5%	5%	5%	6%
grade 5 events	2296	2253	2087	2366	2581	7115
	1%	0%	0%	1%	1%	1%
grade 6 events	28501	28864	26746	26968	34960	121205
	12%	12%	11%	11%	13%	31%
grade 7 events	30266	31488	31511	31888	32929	50244
	13%	13%	14%	13%	13%	13%

2.2 Compared Parameters

Parameter	Planned	Actual	Parameter	Planned	Actual
Instrument	ACIS	ACIS	Obspar format version number	6	6
Detector	ACIS-012367	ACIS-012367	Obspar file type	PREDICTED	ACTUAL
Grating	NONE	NONE	Obspar update status	NONE	UPDATED
Data mode	FAINT	FAINT	On-chip summing requested	N	N
Observation mode	SECONDARY	SECONDARY	Subarray requested	NONE	NONE
Pointing RA	0	341.029892900598	Alternating exposures requested	N	N
Pointing Dec	0	-16.99972787482993	Primary exposure time	0.000000	3.2
Pointing Roll	0.0	327.7059126258706			
SIM focus pos (mm)	-0.782348	-0.6828225247311905			
SIM defocus (mm)	0	0.8505141146731063			
SIM translation stage pos (mm)	-233.592463	250.466033080201			
SIM translation stage offset (mm)	0	-0.01005468664627074			
Observation start time	179598636.616069	179598635.59134			
Observation start date	2003-09-10T16:30:37	2003-09-10T16:30:35			
Observation end time	179622560.117095	179622559.09237			
Observation end date	2003-09-10T23:09:20	2003-09-10T23:09:19			
Read mode	TIMED	TIMED			

2.3 Aspect

2.4 Star Slots

2.5 FID Slots

A Summary

A.1 Status

V&V Scientist	Jen Lauer
V&V Date (YYYY-MM-DD)	2006.07.06
V&V Edition	1
V&V Disposition and Status	OK
V&V Charge Time	8.38719996

A.2 Comments