

# V&V Reference Report

## L2 ASCDS Version : 7.6.8

Observation 60557 - L2 Version 001  
Chandra X-Ray Center

L2 Processing Date : Jul 5 2006

## Contents

<b>1</b>	<b>Front</b>	<b>2</b>
<b>2</b>	<b>OBI</b>	<b>3</b>
2.1	OBI . . . . .	3
2.1.1	Images . . . . .	3
2.1.2	Bias . . . . .	3
2.1.3	Parameters . . . . .	4
2.1.4	Events . . . . .	4
2.2	Compared Parameters . . . . .	5
2.3	Aspect . . . . .	6
2.4	Star Slots . . . . .	8
2.5	FID Slots . . . . .	8
<b>A</b>	<b>Summary</b>	<b>9</b>
A.1	Status . . . . .	9
A.2	Comments . . . . .	9

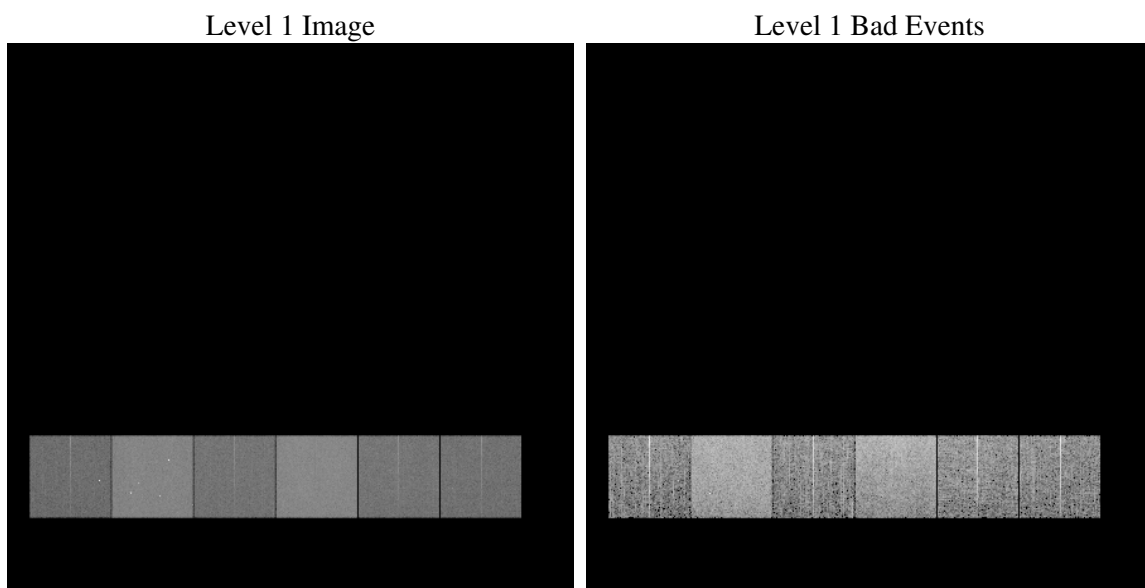
# 1 Front

seq_num	&#160
obs_id	60557
title	ACIS-456789 diagnostics
observer	CHANDRA engineering request/realtime commanding
object	&#160
dtcycle	0
cycle	P
ra_targ	0.0
dec_targ	0.0
ra_nom	300.04162824855
dec_nom	-52.012696494838
roll_nom	300.77493344345
revision	2
ontime	7801.8768654466
livetime	7703.08480285
ontime4	3941.9983347058
ontime5	7801.9179054499
ontime6	4466.598139137
ontime7	7801.8768654466
ontime8	4509.2120694816
ontime9	4301.5848136246
l2events	1131741

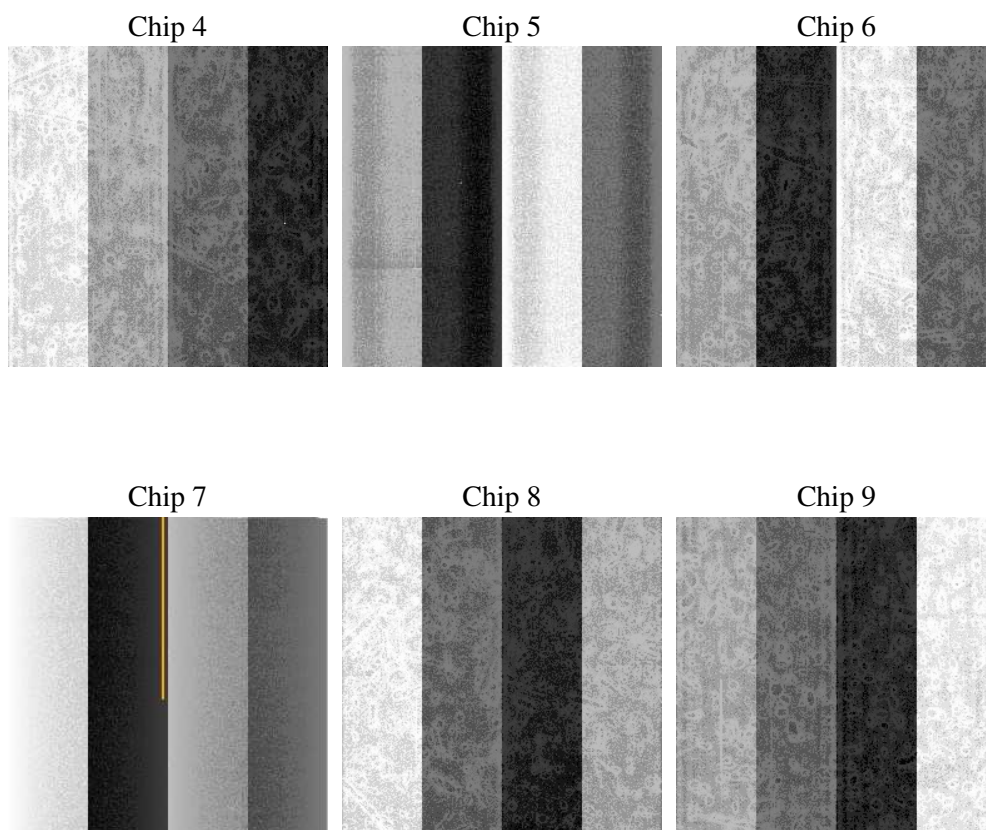
## 2 OBI

### 2.1 OBI

#### 2.1.1 Images



#### 2.1.2 Bias



### 2.1.3 Parameters

obi_num	0
ascdsver	7.6.8
caldbver	3.2.2
date	2006-07-05T09:45:57
revision	2

sched_exp_time	0.0
ontime	7804.3331844211
ontime4	3944.3315336704
ontime5	7804.3331844211
ontime6	4469.3723428547
ontime7	7804.3331844211
ontime8	4511.5042284727
ontime9	4304.0821726024
l1events	1419458

### 2.1.4 Events

	ccd 4	ccd 5	ccd 6	ccd 7	ccd 8	ccd 9
level 1 events	167972	316627	200826	341132	206195	186706
rejected events	28326	55842	30398	50699	32927	28863
rejected %	16%	17%	15%	14%	15%	15%

	ccd 4	ccd 5	ccd 6	ccd 7	ccd 8	ccd 9
grade 0 events	81290	34605	93450	53131	95420	87481
	48%	10%	46%	15%	46%	46%
grade 1 events	576	254	431	139	445	446
	0%	0%	0%	0%	0%	0%
grade 2 events	22570	121743	29651	87042	30217	27203
	13%	38%	14%	25%	14%	14%
grade 3 events	9161	8957	10362	21747	11309	10076
	5%	2%	5%	6%	5%	5%
grade 4 events	9213	8794	10534	21502	11191	9969
	5%	2%	5%	6%	5%	5%
grade 5 events	1785	5900	2080	6606	2402	2062
	1%	1%	1%	1%	1%	1%
grade 6 events	17520	86801	26550	107128	25252	23228
	10%	27%	13%	31%	12%	12%
grade 7 events	25857	49573	27768	43837	29959	26241
	15%	15%	13%	12%	14%	14%

## 2.2 Compared Parameters

Parameter	Planned	Actual	Parameter	Planned	Actual
Instrument	ACIS	ACIS	Obspar format version number	6	6
Detector	ACIS-456789	ACIS-456789	Obspar file type	PREDICTED	ACTUAL
Grating	NONE	NONE	Obspar update status	NONE	UPDATED
Data mode	FAINT	FAINT	On-chip summing requested	N	N
Observation mode	SECONDARY	SECONDARY	Subarray requested	NONE	NONE
Pointing RA	0	300.0416282485452	Alternating exposures requested	N	N
Pointing Dec	0	-52.01269649483832	Primary exposure time	0.000000	3.2
Pointing Roll	0.0	300.7749334434516			
SIM focus pos (mm)	-0.684267	-0.6828225247311905			
SIM defocus (mm)	0	0.8505141146731063			
SIM translation stage pos (mm)	-190.132523	250.466033080201			
SIM translation stage offset (mm)	0	-0.01005468664627074			
Observation start time	179789344.024243	179789342.99952			
Observation start date	2003-09-12T21:29:04	2003-09-12T21:29:02			
Observation end time	179829255.475955	179829254.45123			
Observation end date	2003-09-13T08:34:15	2003-09-13T08:34:14			
Read mode	TIMED	TIMED			

## 2.3 Aspect



## 2.4 Star Slots

## 2.5 FID Slots



## A Summary

### A.1 Status

V&V Scientist	Beth Sundheim
V&V Date (YYYY-MM-DD)	2006.07.05
V&V Edition	1
V&V Disposition and Status	OK
V&V Charge Time	7.80187686

### A.2 Comments