

# V&V Reference Report

## L2 ASCDS Version : 7.6.8

Observation 60546 - L2 Version 001  
Chandra X-Ray Center

L2 Processing Date : Jul 4 2006

## Contents

<b>1</b>	<b>Front</b>	<b>2</b>
<b>2</b>	<b>OBI</b>	<b>3</b>
2.1	OBI . . . . .	3
2.1.1	Images . . . . .	3
2.1.2	Bias . . . . .	3
2.1.3	Parameters . . . . .	4
2.1.4	Events . . . . .	4
2.2	Compared Parameters . . . . .	5
2.3	Aspect . . . . .	6
2.4	Star Slots . . . . .	8
2.5	FID Slots . . . . .	8
<b>A</b>	<b>Summary</b>	<b>9</b>
A.1	Status . . . . .	9
A.2	Comments . . . . .	9

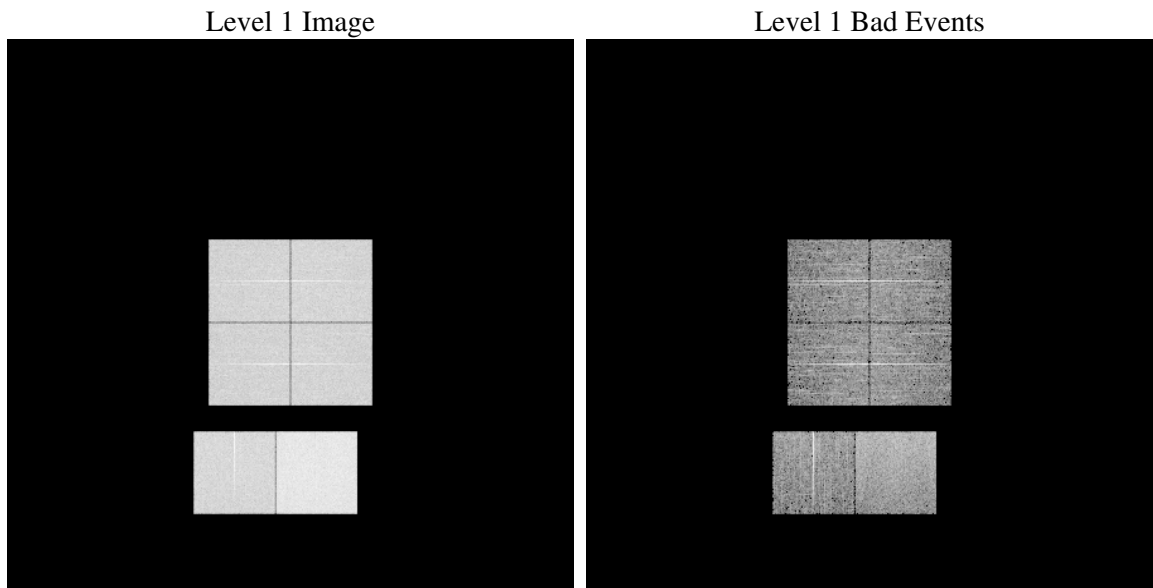
# 1 Front

seq_num	&#160
obs_id	60546
title	ACIS-012367 diagnostics
observer	CHANDRA engineering request/realtime commanding
object	&#160
dtcycle	0
cycle	P
ra_targ	0.0
dec_targ	0.0
ra_nom	337.80244004851
dec_nom	12.571486173124
roll_nom	241.96551863122
revision	2
ontime	7524.8983356357
livetime	7429.61354196
ontime0	4773.3559710085
ontime1	4938.6871913373
ontime2	4585.4609788358
ontime3	4689.0081356466
ontime6	5074.8903511465
ontime7	7524.8983356357
l2events	1105169

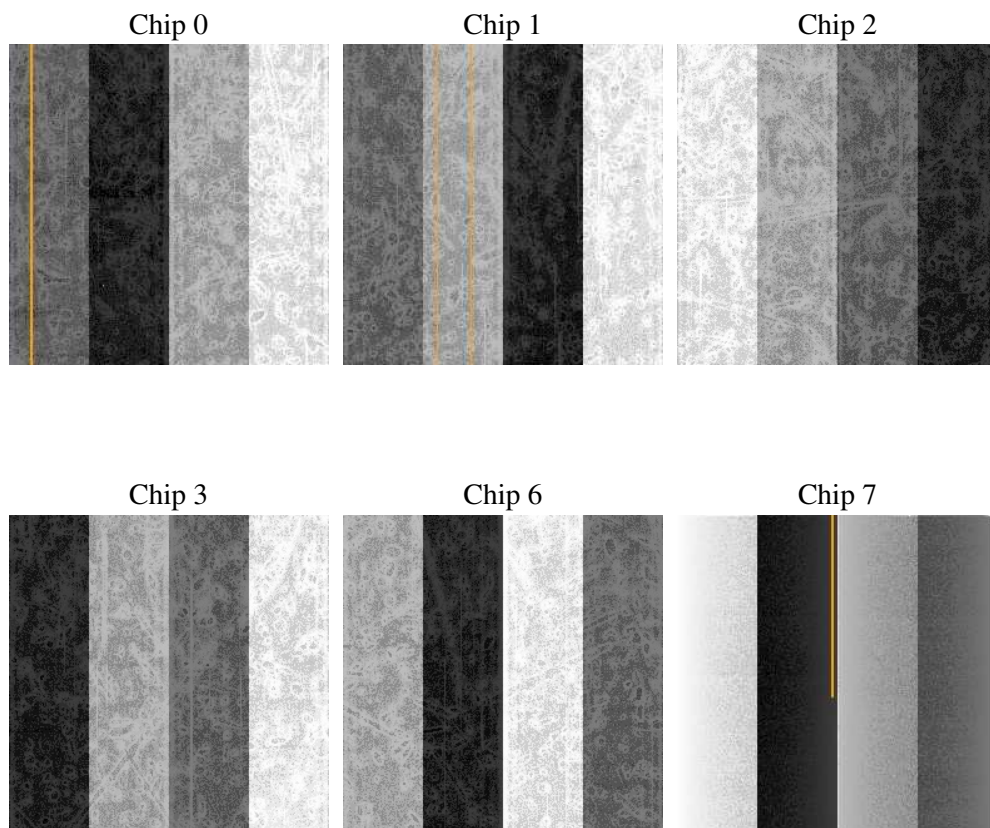
## 2 OBI

### 2.1 OBI

#### 2.1.1 Images



#### 2.1.2 Bias



### 2.1.3 Parameters

obi_num	0
ascdsver	7.6.8
caldbver	3.2.2
date	2006-07-04T14:17:41
revision	2

sched_exp_time	0.0
ontime	7525.6068427861
ontime0	4774.0234381557
ontime1	4939.3136184812
ontime2	4586.0463659763
ontime3	4689.7576828003
ontime6	5075.4346983135
ontime7	7525.6068427861
l1events	1371111

### 2.1.4 Events

	ccd 0	ccd 1	ccd 2	ccd 3	ccd 6	ccd 7
level 1 events	204334	210127	198521	203092	225978	329059
rejected events	31576	31829	31895	32562	34874	50788
rejected %	15%	15%	16%	16%	15%	15%

	ccd 0	ccd 1	ccd 2	ccd 3	ccd 6	ccd 7
grade 0 events	95572	97746	93608	95954	104291	50892
	46%	46%	47%	47%	46%	15%
grade 1 events	515	458	548	557	486	135
	0%	0%	0%	0%	0%	0%
grade 2 events	30035	31741	28022	29163	32746	83109
	14%	15%	14%	14%	14%	25%
grade 3 events	11066	11253	10929	11121	11894	20702
	5%	5%	5%	5%	5%	6%
grade 4 events	11273	11302	11004	11098	12148	20404
	5%	5%	5%	5%	5%	6%
grade 5 events	2153	2149	1997	2280	2399	6383
	1%	1%	1%	1%	1%	1%
grade 6 events	24812	26256	23063	23194	30025	103164
	12%	12%	11%	11%	13%	31%
grade 7 events	28908	29222	29350	29725	31989	44270
	14%	13%	14%	14%	14%	13%

## 2.2 Compared Parameters

Parameter	Planned	Actual	Parameter	Planned	Actual
Instrument	ACIS	ACIS	Obspar format version number	6	6
Detector	ACIS-012367	ACIS-012367	Obspar file type	PREDICTED	ACTUAL
Grating	NONE	NONE	Obspar update status	NONE	UPDATED
Data mode	FAINT	FAINT	On-chip summing requested	N	N
Observation mode	SECONDARY	SECONDARY	Subarray requested	NONE	NONE
Pointing RA	0	337.8024400485068	Alternating exposures requested	N	N
Pointing Dec	0	12.57148617312408	Primary exposure time	0.000000	3.2
Pointing Roll	0.0	241.9655186312203			
SIM focus pos (mm)	-0.782348	-1.038866356238299			
SIM defocus (mm)	0	0.4944702831659975			
SIM translation stage pos (mm)	-233.592463	250.466033080201			
SIM translation stage offset (mm)	0	-0.01005468664627074			
Observation start time	180708078.213649	180708077.18893			
Observation start date	2003-09-23T12:41:18	2003-09-23T12:41:17			
Observation end time	180718713.614105	180718712.58938			
Observation end date	2003-09-23T15:38:34	2003-09-23T15:38:32			
Read mode	TIMED	TIMED			

## 2.3 Aspect



## **2.4 Star Slots**

## **2.5 FID Slots**



## A Summary

### A.1 Status

V&V Scientist	Beth Sundheim
V&V Date (YYYY-MM-DD)	2006.07.05
V&V Edition	1
V&V Disposition and Status	OK
V&V Charge Time	7.52489833

### A.2 Comments