

V&V Reference Report

L2 ASCDS Version : 7.6.8

Observation 60480 - L2 Version 001
Chandra X-Ray Center

L2 Processing Date : Jun 28 2006

Contents

1	Front	2
2	OBI	3
2.1	OBI	3
2.1.1	Images	3
2.1.2	Bias	3
2.1.3	Parameters	4
2.1.4	Events	4
2.2	Compared Parameters	5
2.3	Aspect	6
2.4	Star Slots	8
2.5	FID Slots	8
A	Summary	9
A.1	Status	9
A.2	Comments	9

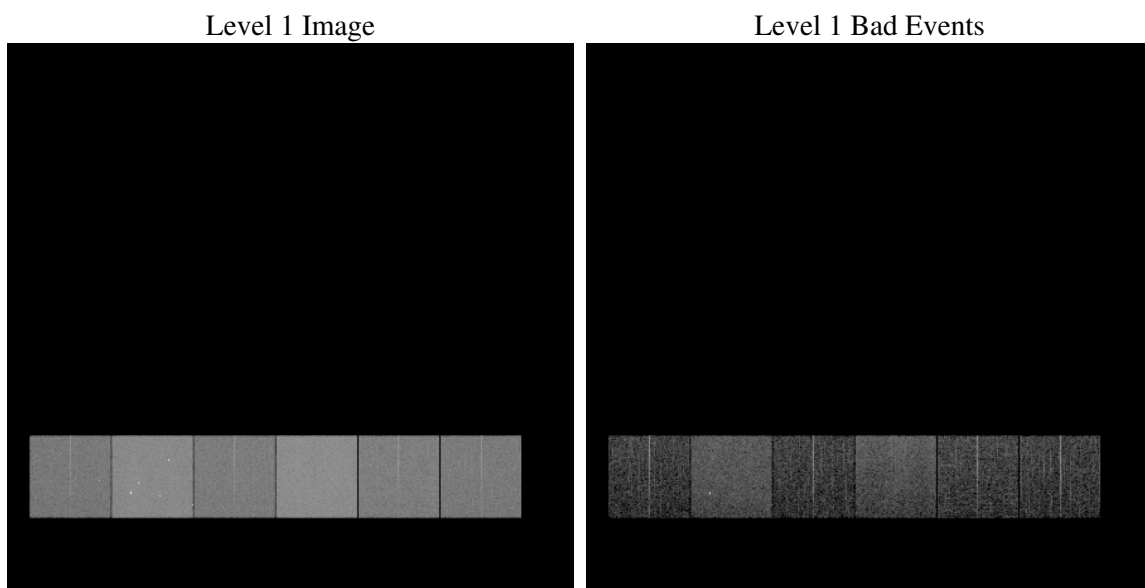
1 Front

seq_num	
obs_id	60480
title	ACIS-456789 diagnostics
observer	CHANDRA engineering request/realtime commanding
object	
dtcycle	0
cycle	P
ra_targ	0.0
dec_targ	0.0
ra_nom	333.76389843527
dec_nom	-14.016738346592
roll_nom	291.2850798176
revision	2
ontime	7804.7999709249
livetime	7705.9708942067
ontime4	4600.2977924645
ontime5	7804.7999709249
ontime6	4875.7398228645
ontime7	7804.7999709249
ontime8	5021.6667598784
ontime9	4738.8411747217
l2events	1150660

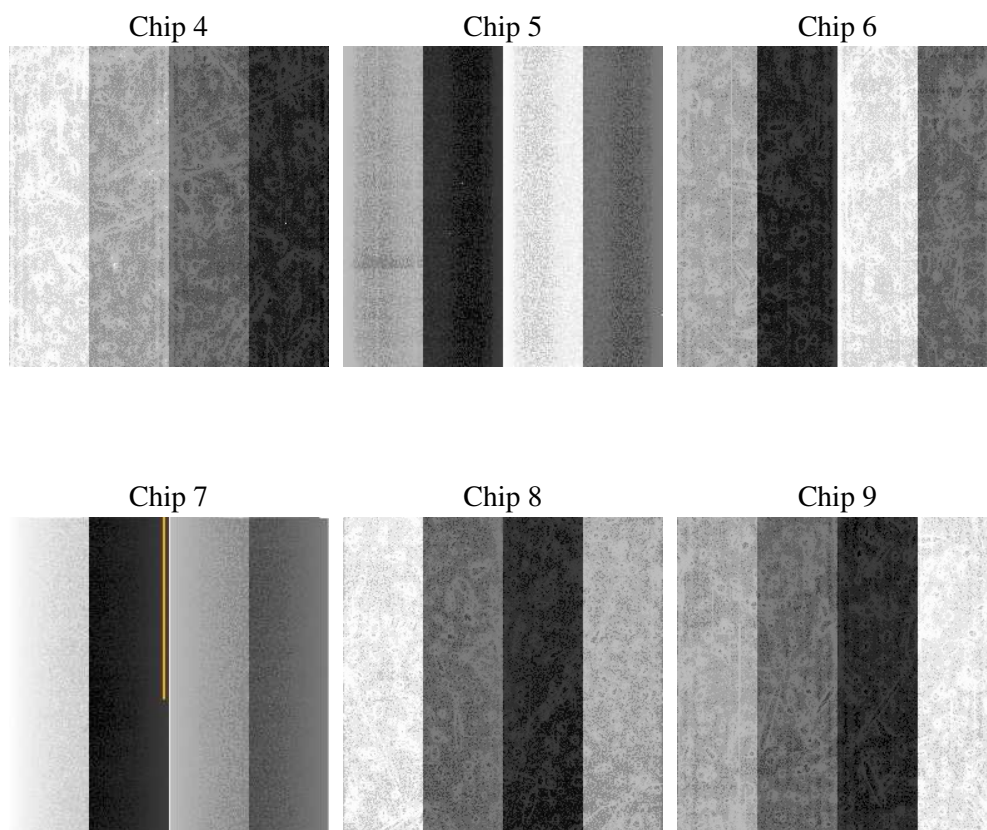
2 OBI

2.1 OBI

2.1.1 Images



2.1.2 Bias



2.1.3 Parameters

obi_num	0
ascdsver	7.6.8
caldbver	3.2.2
date	2006-06-28T06:10:12
revision	2

sched_exp_time	0.0
ontime	7807.5734582543
ontime4	4602.2522032857
ontime5	7807.5734582543
ontime6	4877.735273689
ontime7	7807.5734582543
ontime8	5023.5801307261
ontime9	4741.6146620512
l1events	1418512

2.1.4 Events

	ccd 4	ccd 5	ccd 6	ccd 7	ccd 8	ccd 9
level 1 events	183835	298622	206366	319351	215858	194480
rejected events	25992	50498	26247	44682	29554	26710
rejected %	14%	16%	12%	13%	13%	13%

	ccd 4	ccd 5	ccd 6	ccd 7	ccd 8	ccd 9
grade 0 events	92014	31887	98397	48999	102254	92888
	50%	10%	47%	15%	47%	47%
grade 1 events	518	139	392	118	418	431
	0%	0%	0%	0%	0%	0%
grade 2 events	24936	117865	31119	84079	32344	28740
	13%	39%	15%	26%	14%	14%
grade 3 events	10541	8353	11273	19896	11955	10614
	5%	2%	5%	6%	5%	5%
grade 4 events	10301	8104	10985	19830	12152	10699
	5%	2%	5%	6%	5%	5%
grade 5 events	1836	5626	2010	5673	2284	2025
	0%	1%	0%	1%	1%	1%
grade 6 events	20152	82036	28457	101978	27728	24927
	10%	27%	13%	31%	12%	12%
grade 7 events	23537	44612	23733	38778	26723	24156
	12%	14%	11%	12%	12%	12%

2.2 Compared Parameters

Parameter	Planned	Actual	Parameter	Planned	Actual
Instrument	ACIS	ACIS	Obspar format version number	6	6
Detector	ACIS-456789	ACIS-456789	Obspar file type	PREDICTED	ACTUAL
Grating	NONE	NONE	Obspar update status	NONE	UPDATED
Data mode	FAINT	FAINT	On-chip summing requested	N	N
Observation mode	SECONDARY	SECONDARY	Subarray requested	NONE	NONE
Pointing RA	0	333.7638984352662	Alternating exposures requested	N	N
Pointing Dec	0	-14.01673834659198	Primary exposure time	0.000000	3.2
Pointing Roll	0.0	291.2850798175971			
SIM focus pos (mm)	-0.684267	-0.7809083437167272			
SIM defocus (mm)	0	0.7524282956875696			
SIM translation stage pos (mm)	-190.132523	250.466033080201			
SIM translation stage offset (mm)	0	-0.01005468664627074			
Observation start time	185505763.120411	185505762.09567			
Observation start date	2003-11-18T01:22:43	2003-11-18T01:22:42			
Observation end time	185540188.771906	185540187.74716			
Observation end date	2003-11-18T10:56:29	2003-11-18T10:56:27			
Read mode	TIMED	TIMED			

2.3 Aspect

2.4 Star Slots

2.5 FID Slots

A Summary

A.1 Status

V&V Scientist	Beth Sundheim
V&V Date (YYYY-MM-DD)	2006.06.28
V&V Edition	1
V&V Disposition and Status	OK
V&V Charge Time	7.80479997

A.2 Comments