

V&V Reference Report

L2 ASCDS Version : 7.6.8

Observation 60473 - L2 Version 001
Chandra X-Ray Center

L2 Processing Date : Jul 3 2006

Contents

1	Front	2
2	OBI	3
2.1	OBI	3
2.1.1	Images	3
2.1.2	Bias	3
2.1.3	Parameters	4
2.1.4	Events	4
2.2	Compared Parameters	5
2.3	Aspect	6
2.4	Star Slots	8
2.5	FID Slots	8
A	Summary	9
A.1	Status	9
A.2	Comments	9

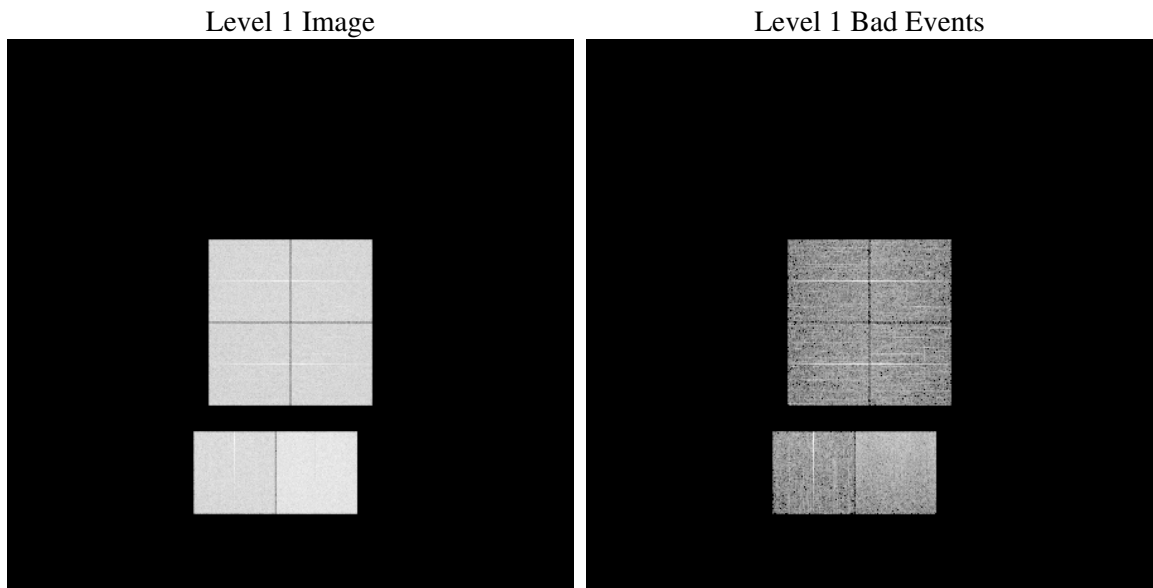
1 Front

seq_num	
obs_id	60473
title	ACIS-012367 diagnostics
observer	CHANDRA engineering request/realtime commanding
object	
dtcycle	0
cycle	P
ra_targ	0.0
dec_targ	0.0
ra_nom	31.98982034246
dec_nom	50.972135729737
roll_nom	224.16958870916
revision	2
ontime	8364.7999688387
livetime	8258.8798349554
ontime0	5992.4111800194
ontime1	5972.9651402533
ontime2	5554.8795074522
ontime3	5710.4458011091
ontime6	6102.604190439
ontime7	8364.7999688387
l2events	1263569

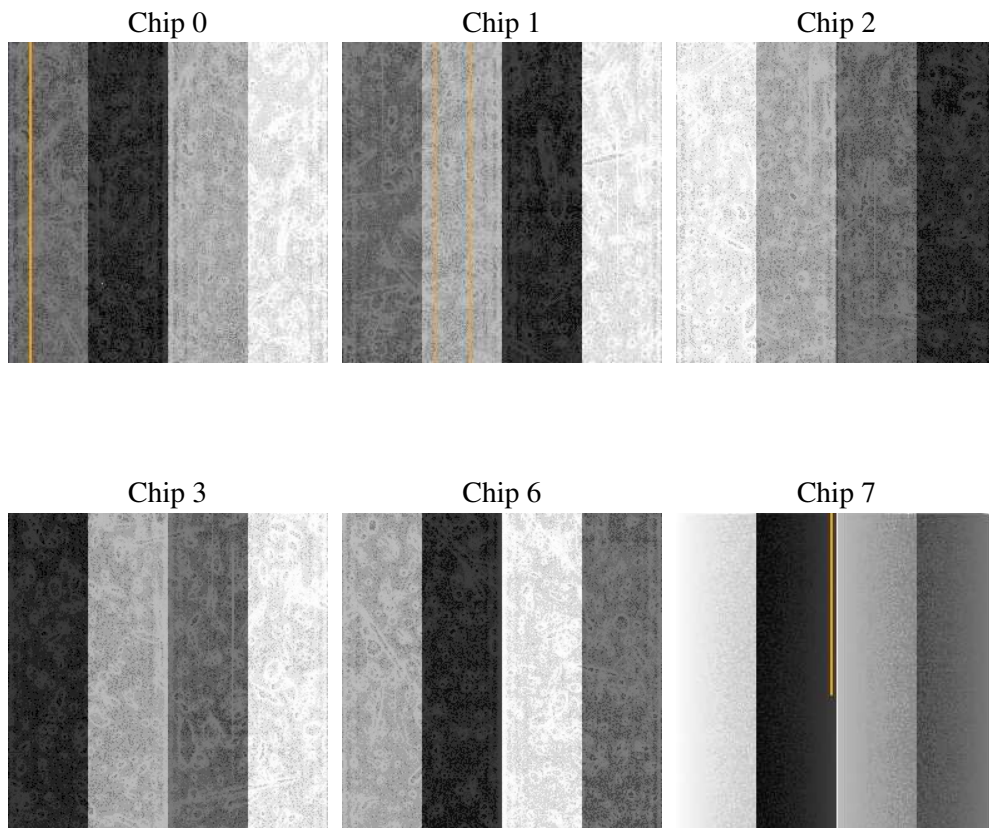
2 OBI

2.1 OBI

2.1.1 Images



2.1.2 Bias



2.1.3 Parameters

obi_num	1
ascdsver	7.6.8
caldbver	3.2.2
date	2006-07-03T18:51:49
revision	2

sched_exp_time	0.0
ontime	8368.265732497
ontime0	5995.8769436777
ontime1	5976.4309039116
ontime2	5558.3452711105
ontime3	5713.9115647674
ontime6	6106.0699540973
ontime7	8368.265732497
l1events	1520424

2.1.4 Events

	ccd 0	ccd 1	ccd 2	ccd 3	ccd 6	ccd 7
level 1 events	235982	237395	224798	231304	253329	337616
rejected events	27894	29369	29226	30324	31191	47519
rejected %	11%	12%	13%	13%	12%	14%

	ccd 0	ccd 1	ccd 2	ccd 3	ccd 6	ccd 7
grade 0 events	115079	114334	110335	113298	120774	51073
	48%	48%	49%	48%	47%	15%
grade 1 events	483	454	526	559	500	118
	0%	0%	0%	0%	0%	0%
grade 2 events	36244	36742	32866	33963	38345	89146
	15%	15%	14%	14%	15%	26%
grade 3 events	13452	13174	12728	13062	13883	21025
	5%	5%	5%	5%	5%	6%
grade 4 events	13401	13256	12619	13016	13712	20719
	5%	5%	5%	5%	5%	6%
grade 5 events	2207	2159	1974	2241	2337	5935
	0%	0%	0%	0%	0%	1%
grade 6 events	30015	30629	27164	27767	35538	108243
	12%	12%	12%	12%	14%	32%
grade 7 events	25101	26647	26586	27398	28240	41357
	10%	11%	11%	11%	11%	12%

2.2 Compared Parameters

Parameter	Planned	Actual	Parameter	Planned	Actual
Instrument	ACIS	ACIS	Obspar format version number	6	6
Detector	ACIS-012367	ACIS-012367	Obspar file type	PREDICTED	ACTUAL
Grating	NONE	NONE	Obspar update status	NONE	UPDATED
Data mode	FAINT	FAINT	On-chip summing requested	N	N
Observation mode	SECONDARY	SECONDARY	Subarray requested	NONE	NONE
Pointing RA	0	31.98982034246029	Alternating exposures requested	N	N
Pointing Dec	0	50.97213572973684	Primary exposure time	0.000000	3.2
Pointing Roll	0.0	224.169588709162			
SIM focus pos (mm)	-0.782348	-0.6828225247311905			
SIM defocus (mm)	0	0.8505141146731063			
SIM translation stage pos (mm)	-233.592463	250.466033080201			
SIM translation stage offset (mm)	0	-0.01005468664627074			
Observation start time	185975938.840766	185975937.81604			
Observation start date	2003-11-23T11:58:59	2003-11-23T11:58:57			
Observation end time	186022223.742773	186022222.71805			
Observation end date	2003-11-24T00:50:24	2003-11-24T00:50:22			
Read mode	TIMED	TIMED			

2.3 Aspect

2.4 Star Slots

2.5 FID Slots

A Summary

A.1 Status

V&V Scientist	Beth Sundheim
V&V Date (YYYY-MM-DD)	2006.07.03
V&V Edition	1
V&V Disposition and Status	OK
V&V Charge Time	8.36479996

A.2 Comments