

V&V Reference Report

L2 ASCDS Version : 7.6.8

Observation 60445 - L2 Version 001
Chandra X-Ray Center

L2 Processing Date : Jun 22 2006

Contents

1	Front	2
2	OBI	3
2.1	OBI	3
2.1.1	Images	3
2.1.2	Bias	3
2.1.3	Parameters	4
2.1.4	Events	4
2.2	Compared Parameters	5
2.3	Aspect	6
2.4	Star Slots	8
2.5	FID Slots	8
A	Summary	9
A.1	Status	9
A.2	Comments	9

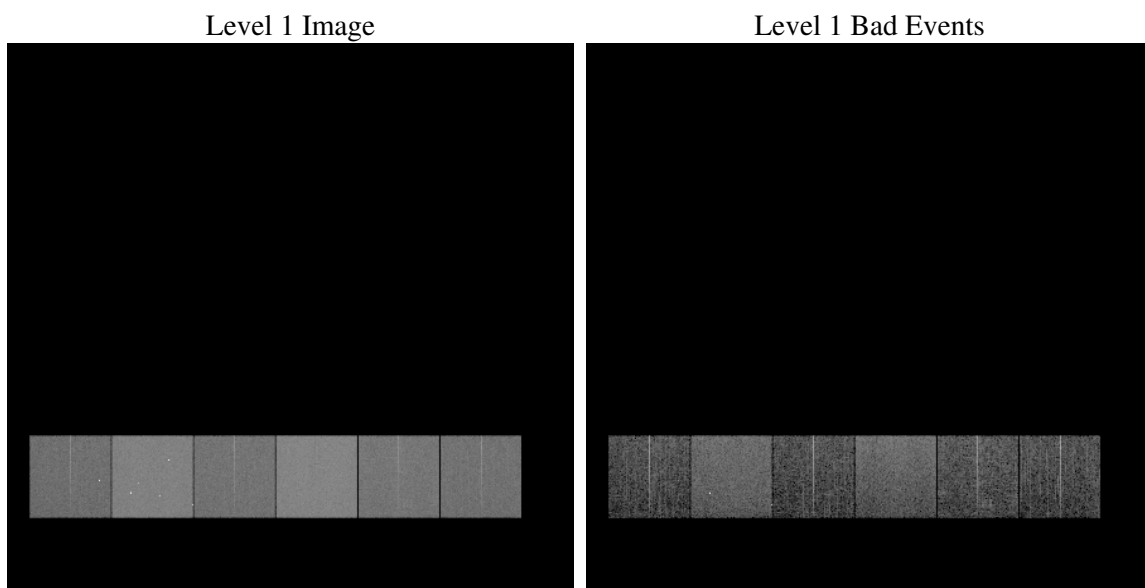
1 Front

seq_num	
obs_id	60445
title	ACIS-456789 diagnostics
observer	CHANDRA engineering request/realtime commanding
object	
dtcycle	0
cycle	P
ra_targ	0.0
dec_targ	0.0
ra_nom	244.83596163759
dec_nom	-80.002433024289
roll_nom	151.90977515934
revision	2
ontime	8451.1999685168
livetime	8344.1857858138
ontime4	4861.4496850669
ontime5	8451.1999685168
ontime6	5250.3263201416
ontime7	8451.1999685168
ontime8	5490.2403260767
ontime9	5130.2877586186
l2events	1211121

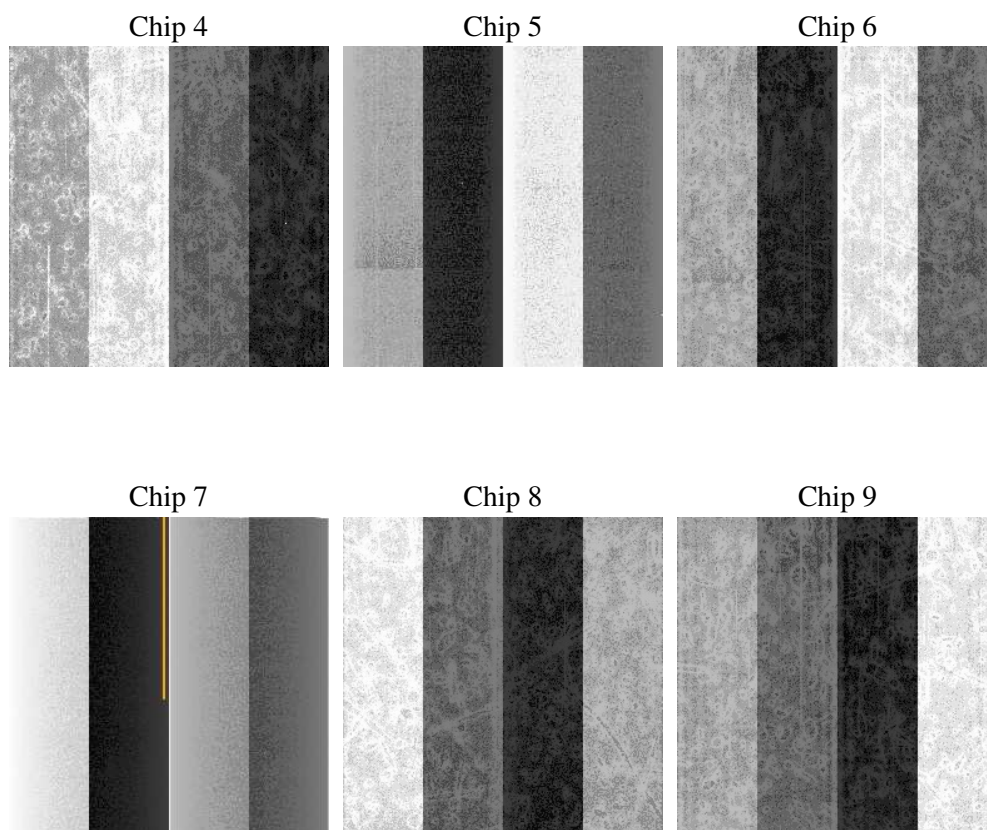
2 OBI

2.1 OBI

2.1.1 Images



2.1.2 Bias



2.1.3 Parameters

obi_num	0
ascdsver	7.6.8
caldsver	3.2.2
date	2006-06-22T17:49:01
revision	2

sched_exp_time	0.0
ontime	8462.2463077307
ontime4	4864.7739140987
ontime5	8462.2463077307
ontime6	5256.9325992763
ontime7	8462.2463077307
ontime8	5496.7645551264
ontime9	5137.0171577632
l1events	1534306

2.1.4 Events

	ccd 4	ccd 5	ccd 6	ccd 7	ccd 8	ccd 9
level 1 events	194586	326017	219845	348173	236165	209520
rejected events	32816	60575	32908	55903	38194	33614
rejected %	16%	18%	14%	16%	16%	16%

	ccd 4	ccd 5	ccd 6	ccd 7	ccd 8	ccd 9
grade 0 events	94588	33991	102264	50600	108555	97299
	48%	10%	46%	14%	45%	46%
grade 1 events	658	198	478	136	533	528
	0%	0%	0%	0%	0%	0%
grade 2 events	25592	124297	32367	89554	34408	30132
	13%	38%	14%	25%	14%	14%
grade 3 events	10587	8689	11671	20804	12797	11419
	5%	2%	5%	5%	5%	5%
grade 4 events	10613	8427	11581	20607	12674	11076
	5%	2%	5%	5%	5%	5%
grade 5 events	2079	6821	2385	6716	3001	2472
	1%	2%	1%	1%	1%	1%
grade 6 events	20485	90332	29285	111053	29751	26191
	10%	27%	13%	31%	12%	12%
grade 7 events	29984	53262	29814	48703	34446	30403
	15%	16%	13%	13%	14%	14%

2.2 Compared Parameters

Parameter	Planned	Actual	Parameter	Planned	Actual
Instrument	ACIS	ACIS	Obspar format version number	6	6
Detector	ACIS-456789	ACIS-456789	Obspar file type	PREDICTED	ACTUAL
Grating	NONE	NONE	Obspar update status	NONE	UPDATED
Data mode	FAINT	FAINT	On-chip summing requested	N	N
Observation mode	SECONDARY	SECONDARY	Subarray requested	NONE	NONE
Pointing RA	0	244.8359616375891	Alternating exposures requested	N	N
Pointing Dec	0	-80.00243302428906	Primary exposure time	0.000000	3.2
Pointing Roll	0.0	151.9097751593443			
SIM focus pos (mm)	-0.684267	-0.7809083437167272			
SIM defocus (mm)	0	0.7524282956875696			
SIM translation stage pos (mm)	-190.132523	250.466033080201			
SIM translation stage offset (mm)	0	-0.01005468664627074			
Observation start time	188512397.800818	188512396.7761			
Observation start date	2003-12-22T20:33:18	2003-12-22T20:33:16			
Observation end time	188535193.80181	188535192.77709			
Observation end date	2003-12-23T02:53:14	2003-12-23T02:53:12			
Read mode	TIMED	TIMED			

2.3 Aspect

2.4 Star Slots

2.5 FID Slots

A Summary

A.1 Status

V&V Scientist	Jen Lauer
V&V Date (YYYY-MM-DD)	2006.06.22
V&V Edition	1
V&V Disposition and Status	OK
V&V Charge Time	8.45119996

A.2 Comments