

V&V Reference Report

L2 ASCDS Version : 7.6.8

Observation 60439 - L2 Version 001
Chandra X-Ray Center

L2 Processing Date : Jun 22 2006

Contents

1	Front	2
2	OBI	3
2.1	OBI	3
2.1.1	Images	3
2.1.2	Bias	3
2.1.3	Parameters	4
2.1.4	Events	4
2.2	Compared Parameters	5
2.3	Aspect	6
2.4	Star Slots	8
2.5	FID Slots	8
A	Summary	9
A.1	Status	9
A.2	Comments	9

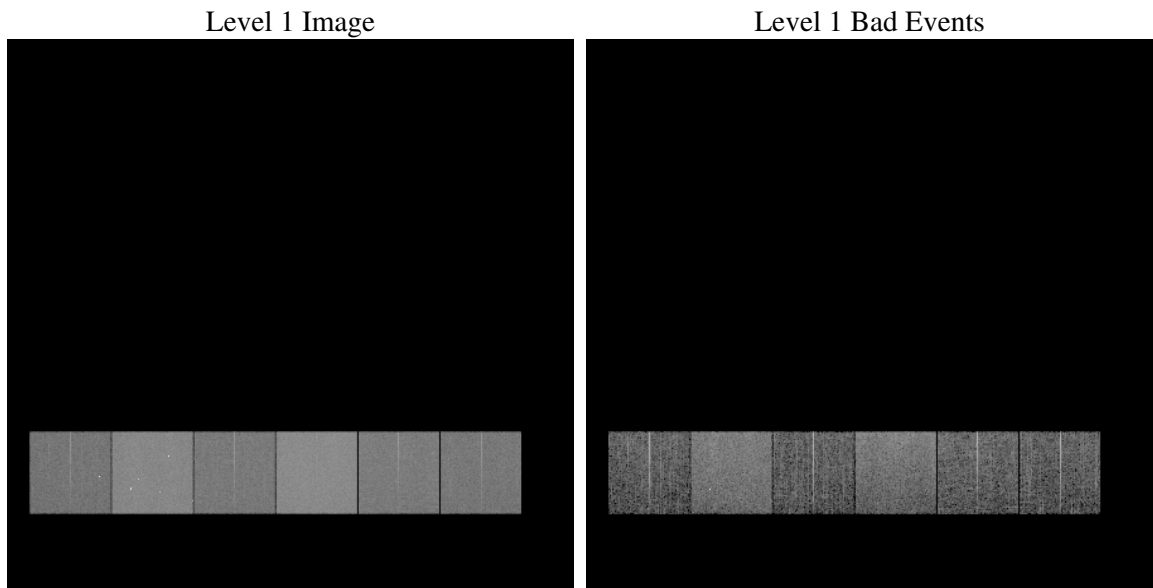
1 Front

seq_num	
obs_id	60439
title	ACIS-456789 diagnostics
observer	CHANDRA engineering request/realtime commanding
object	
dtcycle	0
cycle	P
ra_targ	0.0
dec_targ	0.0
ra_nom	45.02286617393
dec_nom	15.981689518256
roll_nom	287.26679653295
revision	2
ontime	8460.2809747458
livetime	8353.1518028739
ontime4	4879.1194247603
ontime5	8460.3220147491
ontime6	5258.2755048573
ontime7	8460.2809747458
ontime8	5478.7445009351
ontime9	5170.6460070908
l2events	1206809

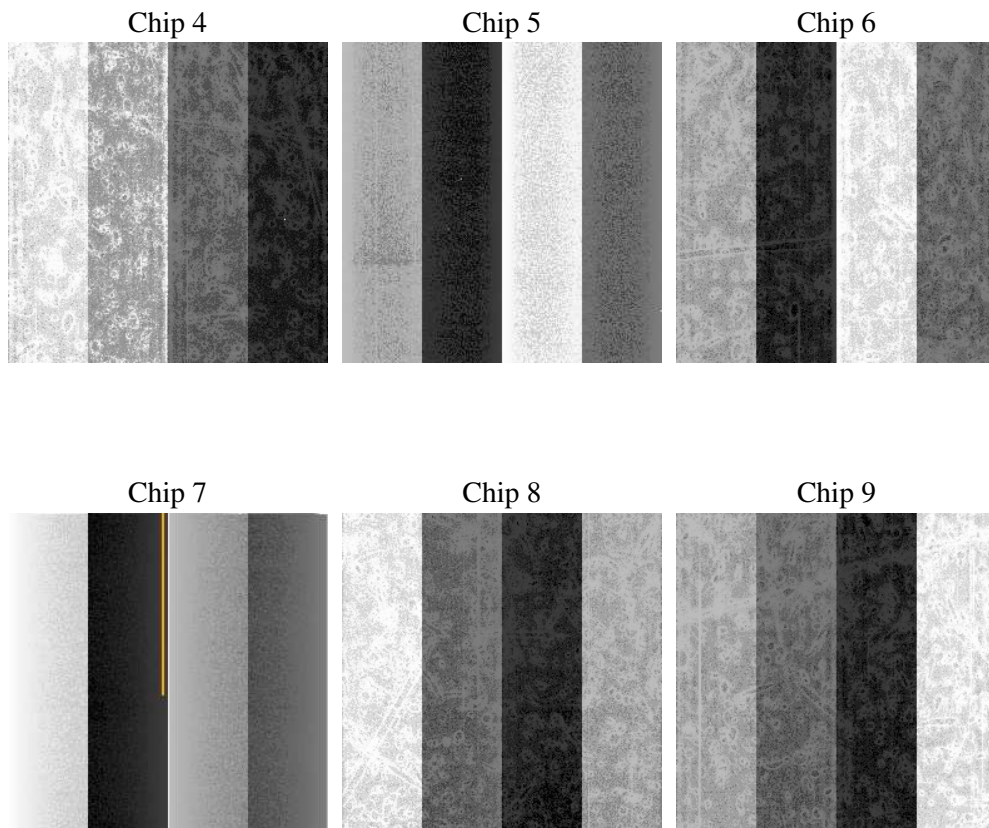
2 OBI

2.1 OBI

2.1.1 Images



2.1.2 Bias



2.1.3 Parameters

obi_num	1
ascdsver	7.6.8
caldbver	3.2.2
date	2006-06-22T19:14:41
revision	2

sched_exp_time	0.0
ontime	8462.2681677639
ontime4	4880.9834977686
ontime5	8462.2681677639
ontime6	5260.1806178689
ontime7	8462.2681677639
ontime8	5480.5675339699
ontime9	5172.6742401123
l1events	1533363

2.1.4 Events

	ccd 4	ccd 5	ccd 6	ccd 7	ccd 8	ccd 9
level 1 events	195455	323941	220262	349237	234558	209910
rejected events	34448	61135	34432	55113	38495	34412
rejected %	17%	18%	15%	15%	16%	16%

	ccd 4	ccd 5	ccd 6	ccd 7	ccd 8	ccd 9
grade 0 events	94089	32719	101582	53199	107640	96685
	48%	10%	46%	15%	45%	46%
grade 1 events	609	122	422	150	483	506
	0%	0%	0%	0%	0%	0%
grade 2 events	25508	123943	32516	88181	34417	30335
	13%	38%	14%	25%	14%	14%
grade 3 events	10552	8649	11313	21681	12689	11296
	5%	2%	5%	6%	5%	5%
grade 4 events	10658	8578	11620	21632	12522	11225
	5%	2%	5%	6%	5%	5%
grade 5 events	2256	6402	2388	7021	2877	2528
	1%	1%	1%	2%	1%	1%
grade 6 events	20298	89021	28909	109544	28942	26061
	10%	27%	13%	31%	12%	12%
grade 7 events	31485	54507	31512	47829	34988	31274
	16%	16%	14%	13%	14%	14%

2.2 Compared Parameters

Parameter	Planned	Actual	Parameter	Planned	Actual
Instrument	ACIS	ACIS	Obspar format version number	6	6
Detector	ACIS-456789	ACIS-456789	Obspar file type	PREDICTED	ACTUAL
Grating	NONE	NONE	Obspar update status	NONE	UPDATED
Data mode	FAINT	FAINT	On-chip summing requested	N	N
Observation mode	SECONDARY	SECONDARY	Subarray requested	NONE	NONE
Pointing RA	0	45.02286617392976	Alternating exposures requested	N	N
Pointing Dec	0	15.98168951825559	Primary exposure time	0.000000	3.2
Pointing Roll	0.0	287.266796532947			
SIM focus pos (mm)	-0.684267	-1.038866356238299			
SIM defocus (mm)	0	0.4944702831659975			
SIM translation stage pos (mm)	-190.132523	250.466033080201			
SIM translation stage offset (mm)	0	-0.01005468664627074			
Observation start time	188966866.420594	188966865.39586			
Observation start date	2003-12-28T02:47:46	2003-12-28T02:47:45			
Observation end time	188988721.471546	188988720.44681			
Observation end date	2003-12-28T08:52:01	2003-12-28T08:52:00			
Read mode	TIMED	TIMED			

2.3 Aspect

2.4 Star Slots

2.5 FID Slots

A Summary

A.1 Status

V&V Scientist	Jen Lauer
V&V Date (YYYY-MM-DD)	2006.06.23
V&V Edition	1
V&V Disposition and Status	OK
V&V Charge Time	8.46028097

A.2 Comments