

V&V Reference Report

L2 ASCDS Version : 7.6.8

Observation 60435 - L2 Version 001
Chandra X-Ray Center

L2 Processing Date : Jun 22 2006

Contents

1	Front	2
2	OBI	3
2.1	OBI	3
2.1.1	Images	3
2.1.2	Bias	3
2.1.3	Parameters	4
2.1.4	Events	4
2.2	Compared Parameters	5
2.3	Aspect	6
2.4	Star Slots	8
2.5	FID Slots	8
A	Summary	9
A.1	Status	9
A.2	Comments	9

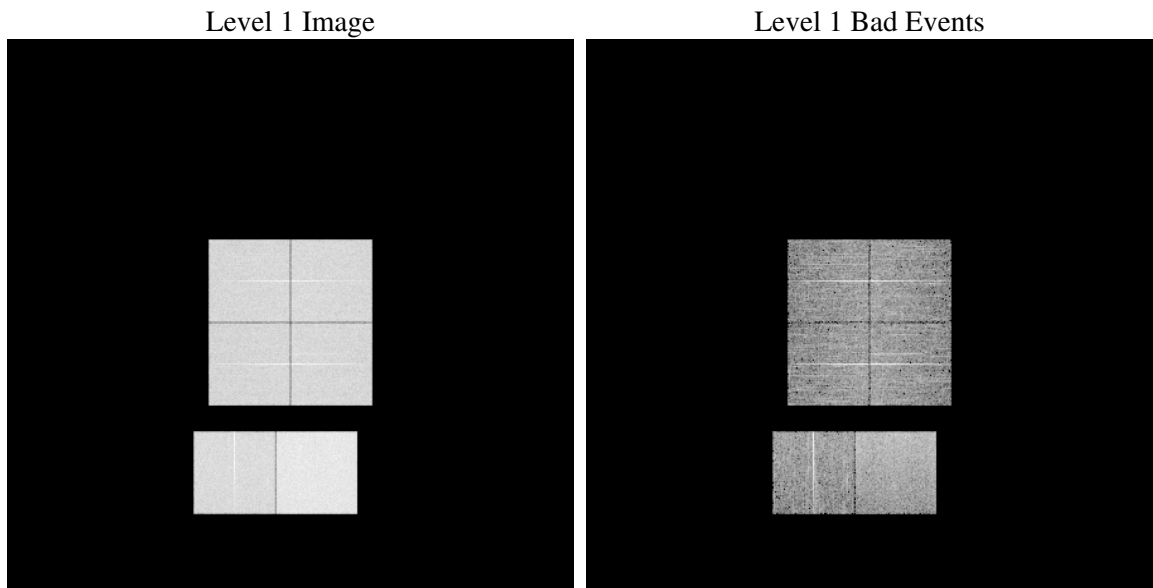
1 Front

seq_num	
obs_id	60435
title	ACIS-012367 diagnostics
observer	CHANDRA engineering request/realtime commanding
object	
dtcycle	0
cycle	P
ra_targ	0.0
dec_targ	0.0
ra_nom	128.95898566245
dec_nom	49.009670551342
roll_nom	127.35795851557
revision	2
ontime	8466.4727695584
livetime	8359.2651934524
ontime0	5876.9726216495
ontime1	5987.2068708241
ontime2	5582.1242130995
ontime3	5786.1429434419
ontime6	6201.1934583485
ontime7	8466.4727695584
l2events	1236380

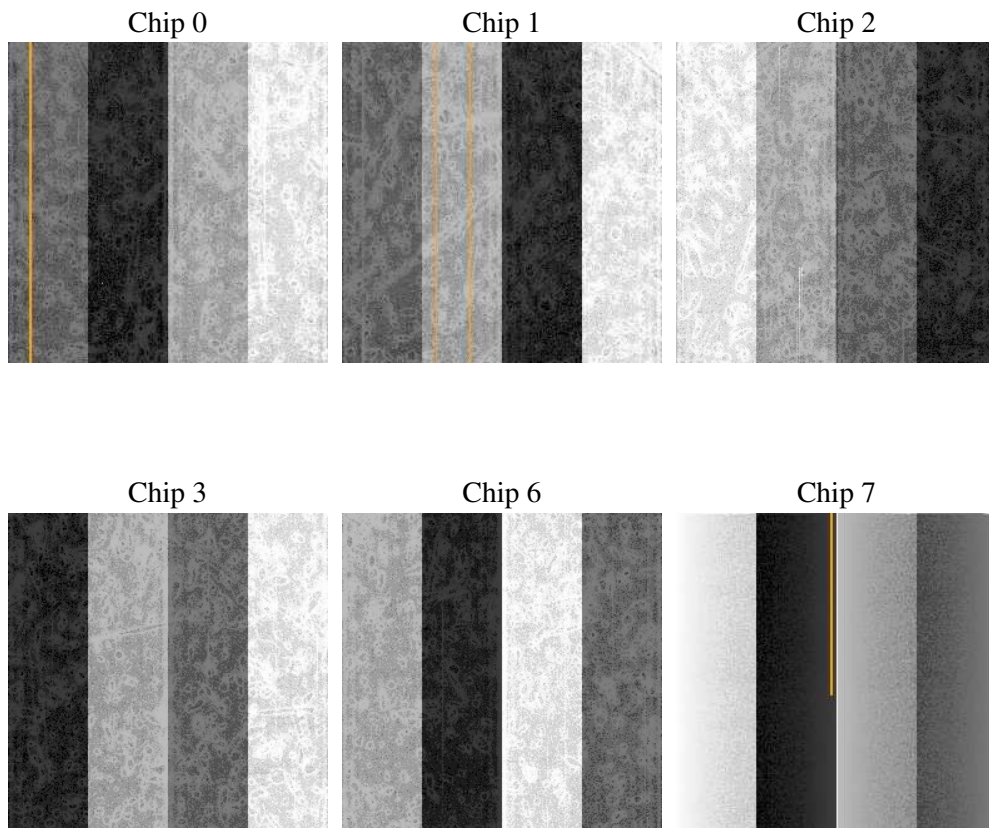
2 OBI

2.1 OBI

2.1.1 Images



2.1.2 Bias



2.1.3 Parameters

obi_num	0
ascdsver	7.6.8
caldbver	3.2.2
date	2006-06-22T19:24:00
revision	2

sched_exp_time	0.0
ontime	8468.7512582242
ontime0	5879.210070312
ontime1	5989.4032794833
ontime2	5584.2795817554
ontime3	5788.462472111
ontime6	6203.3077870309
ontime7	8468.7512582242
l1events	1536275

2.1.4 Events

	ccd 0	ccd 1	ccd 2	ccd 3	ccd 6	ccd 7
level 1 events	231583	238255	225873	234473	257986	348105
rejected events	34821	36008	36824	37516	39402	55548
rejected %	15%	15%	16%	16%	15%	15%

	ccd 0	ccd 1	ccd 2	ccd 3	ccd 6	ccd 7
grade 0 events	108667	111191	106045	111246	119069	51355
	46%	46%	46%	47%	46%	14%
grade 1 events	566	535	614	614	544	133
	0%	0%	0%	0%	0%	0%
grade 2 events	34385	35775	32176	33462	37405	88978
	14%	15%	14%	14%	14%	25%
grade 3 events	12880	13043	12213	12858	13655	21133
	5%	5%	5%	5%	5%	6%
grade 4 events	12639	12699	12265	12652	13720	20914
	5%	5%	5%	5%	5%	6%
grade 5 events	2415	2606	2301	2596	2757	6885
	1%	1%	1%	1%	1%	1%
grade 6 events	28297	29652	26454	26841	34839	110298
	12%	12%	11%	11%	13%	31%
grade 7 events	31734	32754	33805	34204	35997	48409
	13%	13%	14%	14%	13%	13%

2.2 Compared Parameters

Parameter	Planned	Actual	Parameter	Planned	Actual
Instrument	ACIS	ACIS	Obspar format version number	6	6
Detector	ACIS-012367	ACIS-012367	Obspar file type	PREDICTED	ACTUAL
Grating	NONE	NONE	Obspar update status	NONE	UPDATED
Data mode	FAINT	FAINT	On-chip summing requested	N	N
Observation mode	SECONDARY	SECONDARY	Subarray requested	NONE	NONE
Pointing RA	0	128.9589856624497	Alternating exposures requested	N	N
Pointing Dec	0	49.00967055134169	Primary exposure time	0.000000	3.2
Pointing Roll	0.0	127.3579585155689			
SIM focus pos (mm)	-0.782348	-0.7809083437167272			
SIM defocus (mm)	0	0.7524282956875696			
SIM translation stage pos (mm)	-233.592463	250.466033080201			
SIM translation stage offset (mm)	0	-0.01005468664627074			
Observation start time	189199611.130697	189199610.10598			
Observation start date	2003-12-30T19:26:51	2003-12-30T19:26:50			
Observation end time	189220920.881624	189220919.85691			
Observation end date	2003-12-31T01:22:01	2003-12-31T01:21:59			
Read mode	TIMED	TIMED			

2.3 Aspect

2.4 Star Slots

2.5 FID Slots

A Summary

A.1 Status

V&V Scientist	Jen Lauer
V&V Date (YYYY-MM-DD)	2006.06.23
V&V Edition	1
V&V Disposition and Status	OK
V&V Charge Time	8.46647276

A.2 Comments