

# V&V Reference Report

## L2 ASCDS Version : 8.4.5

Observation 61352 - L2 Version 3  
Chandra X-Ray Center

L2 Processing Date : Sep 30 2012

## Contents

<b>1</b>	<b>Front</b>	<b>2</b>
<b>2</b>	<b>OBI</b>	<b>3</b>
2.1	OBI . . . . .	3
2.1.1	Images . . . . .	3
2.1.2	Bias . . . . .	3
2.1.3	Parameters . . . . .	4
2.1.4	Events . . . . .	4
2.2	Compared Parameters . . . . .	5
2.3	Star Slots . . . . .	6
2.4	FID Slots . . . . .	6
<b>A</b>	<b>Summary</b>	<b>7</b>
A.1	Status . . . . .	7
A.2	Comments . . . . .	7

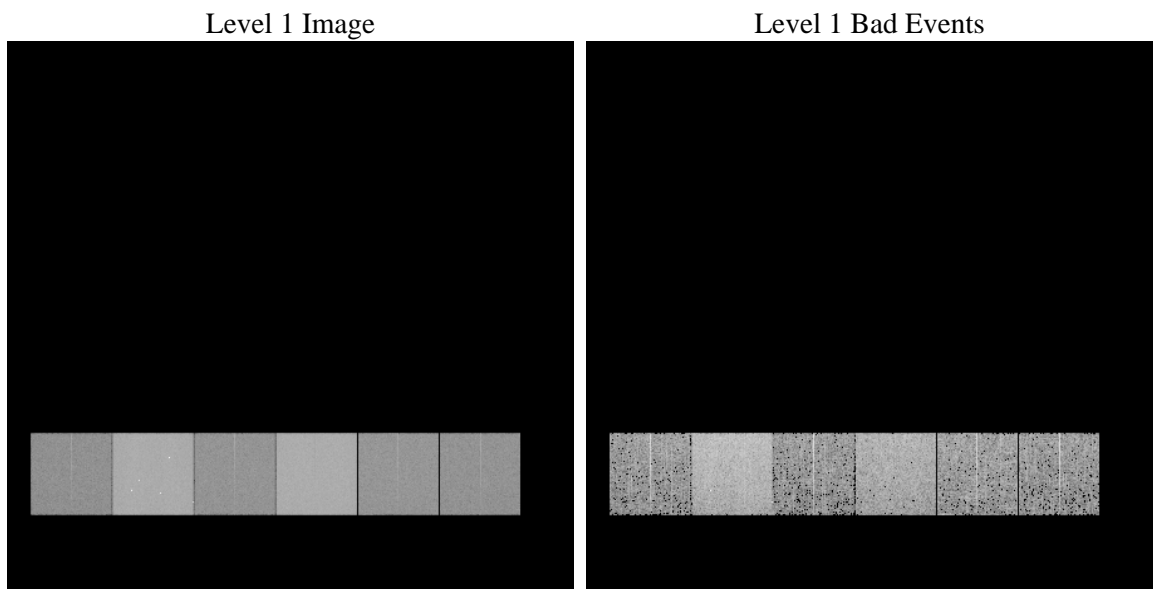
# 1 Front

seq_num	&#160	Sequence number
obs_id	61352	Observation id
title	ACIS-456789 diagnostics	Proposal title
observer	CHANDRA engineering request/realtime commanding	Principal investig
object	&#160	Source name
dtcycle	0	&#160
cycle	P	events from which exps? Prim/Second/Both
ra_targ	0.0	Observer's specified target RA [deg]
dec_targ	0.0	Observer's specified target Dec [deg]
ra_nom	144.95298112077	Nominal RA [deg]
dec_nom	54.007431485012	Nominal Dec [deg]
roll_nom	132.02122583952	Nominal Roll [deg]
revision	3	Processing version of data
ontime	6332.5363005102	Sum of GTIs [s]
livetime	6252.3499128775	Livetime [s]
ontime4	2378.291700393	Sum of GTIs [s]
ontime5	6714.9703121036	Sum of GTIs [s]
ontime6	2575.9540300816	Sum of GTIs [s]
ontime7	6332.5363005102	Sum of GTIs [s]
ontime8	2702.6261636615	Sum of GTIs [s]
ontime9	2536.9382310063	Sum of GTIs [s]
l2events	1211005	Number of level 2 events

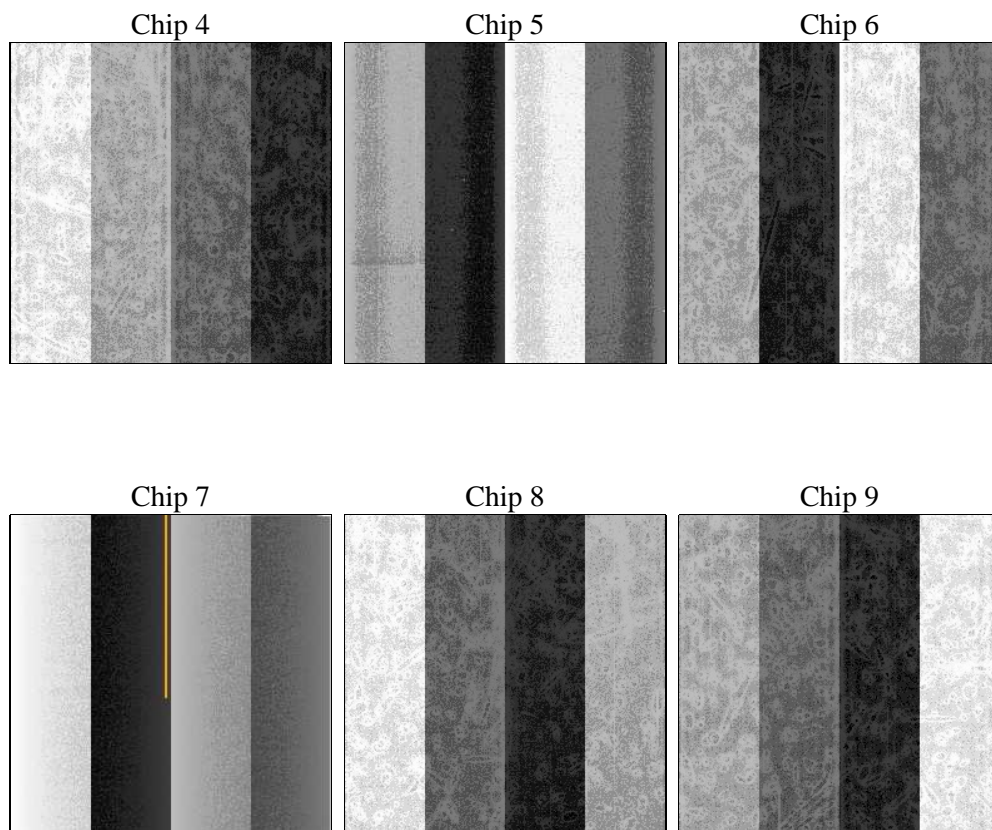
## 2 OBI

### 2.1 OBI

#### 2.1.1 Images



#### 2.1.2 Bias



### 2.1.3 Parameters

obi_num	1	Obi number	sched_exp_time	0.0	[s] Scheduled observation exposure time
ascdsver	8.4.5	Processing system revision	ontime	6332.5363005102	Sum of GTIs [s]
caldsver	4.5.2	&#160	ontime4	2378.291700393	Sum of GTIs [s]
date	2012-09-30T08:22:41	Date and time of file creation	ontime5	6714.9703121036	Sum of GTIs [s]
revision	3	Processing version of data	ontime6	2575.9540300816	Sum of GTIs [s]
			ontime7	6332.5363005102	Sum of GTIs [s]
			ontime8	2702.6261636615	Sum of GTIs [s]
			ontime9	2536.9382310063	Sum of GTIs [s]
			l1events	1422457	Number of level 1 events

### 2.1.4 Events

	ccd 4	ccd 5	ccd 6	ccd 7	ccd 8	ccd 9		ccd 4	ccd 5	ccd 6	ccd 7	ccd 8	ccd 9
level 1 events	144926	383898	166350	390861	177864	158558	grade 0 events	71320	84926	80869	91363	86439	76501
rejected events	19114	45168	18231	31711	21752	18889		49%	22%	48%	23%	48%	48%
rejected %	13%	11%	10%	8%	12%	11%	grade 1 events	336	446	363	231	369	374
								0%	0%	0%	0%	0%	0%
							grade 2 events	22334	120497	25786	80035	27820	24672
								15%	31%	15%	20%	15%	15%
							grade 3 events	7710	21535	9068	36600	9706	8552
								5%	5%	5%	9%	5%	5%
							grade 4 events	7450	21012	9075	35810	9811	8765
								5%	5%	5%	9%	5%	5%
							grade 5 events	1233	8404	1374	6469	1629	1398
								0%	2%	0%	1%	0%	0%
							grade 6 events	16998	90920	23321	115524	22514	21179
								11%	23%	14%	29%	12%	13%
							grade 7 events	17545	36158	16494	24829	19576	17117
								12%	9%	9%	6%	11%	10%

## 2.2 Compared Parameters

Parameter	Planned	Actual	Parameter	Planned	Actual
Instrument	ACIS	ACIS	Obspar format version number	7	7
Detector	ACIS-456789	ACIS-456789	Obspar file type	PREDICTED	ACTUAL
Grating	NONE	NONE	Obspar update status	NONE	UPDATED
Data mode	FAINT	FAINT	On-chip summing requested	N	N
Observation mode	SECONDARY	SECONDARY	Subarray requested	NONE	NONE
[deg] Pointing RA	0	144.9529811207685	Alternating exposures requested	N	N
[deg] Pointing Dec	0	54.00743148501197	[s] Primary exposure time	3.2	3.2
[deg] Pointing Roll	0.0	132.0212258395233			
[mm] SIM focus pos	-0.684267	-0.6828225247311905			
[mm] SIM defocus	0	0.8505141146731063			
[mm] SIM translation stage pos	-190.132523	250.466033080201			
[mm] SIM translation stage offset	0	-0.01005468664627074			
[s] Observation start time (MET)	127242892.883519	127242892.11504			
Observation start date	2002-01-12T17:14:53	2002-01-12T17:14:52			
[s] Observation end time (MET)	127254161.733973	127254160.96549			
Observation end date	2002-01-12T20:22:42	2002-01-12T20:22:40			
Read mode	TIMED	TIMED			

## **2.3 Star Slots**

## **2.4 FID Slots**

## **A Summary**

### **A.1 Status**

V&V Scientist	Jen Lauer
V&V Date (YYYY-MM-DD)	2012.10.02
V&V Edition	1
V&V Disposition and Status	OK
V&V Charge Time	6.3325363005102

### **A.2 Comments**