

# V&V Reference Report

## L2 ASCDS Version : 7.6.8.1

Observation 61325 - L2 Version 001  
Chandra X-Ray Center

L2 Processing Date : Aug 31 2006

## Contents

<b>1</b>	<b>Front</b>	<b>2</b>
<b>2</b>	<b>OBI</b>	<b>3</b>
2.1	OBI . . . . .	3
2.1.1	Images . . . . .	3
2.1.2	Bias . . . . .	3
2.1.3	Parameters . . . . .	4
2.1.4	Events . . . . .	4
2.2	Compared Parameters . . . . .	5
2.3	Aspect . . . . .	6
2.4	Star Slots . . . . .	8
2.5	FID Slots . . . . .	8
<b>A</b>	<b>Summary</b>	<b>9</b>
A.1	Status . . . . .	9
A.2	Comments . . . . .	9

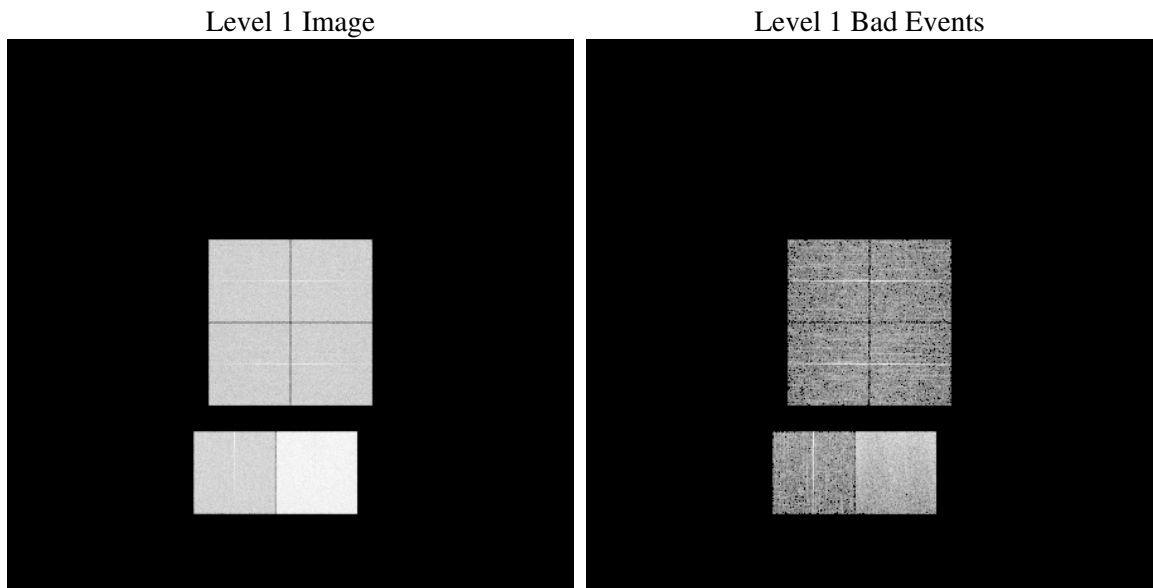
# 1 Front

seq_num	&#160
obs_id	61325
title	ACIS-012367 diagnostics
observer	CHANDRA engineering request/realtime commanding
object	&#160
dtcycle	0
cycle	P
ra_targ	0.0
dec_targ	0.0
ra_nom	180.99674164891
dec_nom	-3.9715772458556
roll_nom	63.705259334264
revision	2
ontime	7622.4000070989
livetime	7525.8805885508
ontime0	3059.1037093848
ontime1	3130.4065195769
ontime2	2897.861523509
ontime3	2965.1138984114
ontime6	3238.2098792344
ontime7	7622.4000070989
l2events	1201206

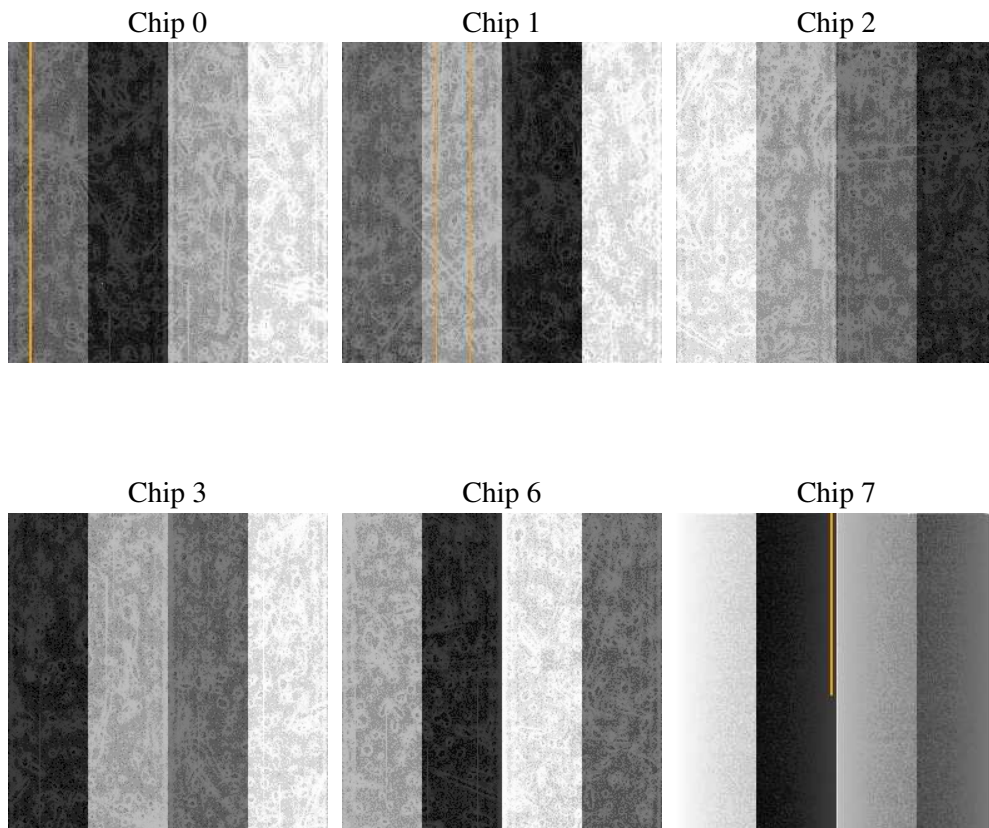
## 2 OBI

### 2.1 OBI

#### 2.1.1 Images



#### 2.1.2 Bias



### 2.1.3 Parameters

obi_num	1
ascdsver	7.6.8.1
caldbver	3.2.3
date	2006-09-01T00:06:17
revision	2

sched_exp_time	0.0
ontime	7626.0739472508
ontime0	3062.7776495367
ontime1	3134.0804597288
ontime2	2900.7265267968
ontime3	2968.7878385633
ontime6	3241.0338425189
ontime7	7626.0739472508
l1events	1413717

### 2.1.4 Events

	ccd 0	ccd 1	ccd 2	ccd 3	ccd 6	ccd 7
level 1 events	186276	189868	179211	184062	208108	466192
rejected events	20906	20723	21405	22369	23915	52460
rejected %	11%	10%	11%	12%	11%	11%

	ccd 0	ccd 1	ccd 2	ccd 3	ccd 6	ccd 7
grade 0 events	91544	93621	87624	90756	100880	78208
	49%	49%	48%	49%	48%	16%
grade 1 events	456	420	452	446	449	163
	0%	0%	0%	0%	0%	0%
grade 2 events	28991	29828	28135	28252	31790	123443
	15%	15%	15%	15%	15%	26%
grade 3 events	10448	10654	9843	10202	11386	31709
	5%	5%	5%	5%	5%	6%
grade 4 events	10576	10721	9836	10298	11461	31036
	5%	5%	5%	5%	5%	6%
grade 5 events	1498	1580	1386	1468	1752	7327
	0%	0%	0%	0%	0%	1%
grade 6 events	23983	24478	22538	22356	28842	149494
	12%	12%	12%	12%	13%	32%
grade 7 events	18780	18566	19397	20284	21548	44812
	10%	9%	10%	11%	10%	9%

## 2.2 Compared Parameters

Parameter	Planned	Actual	Parameter	Planned	Actual
Instrument	ACIS	ACIS	Obspar format version number	6	6
Detector	ACIS-012367	ACIS-012367	Obspar file type	PREDICTED	ACTUAL
Grating	NONE	NONE	Obspar update status	NONE	UPDATED
Data mode	FAINT	FAINT	On-chip summing requested	N	N
Observation mode	SECONDARY	SECONDARY	Subarray requested	NONE	NONE
Pointing RA	0	180.9967416489104	Alternating exposures requested	N	N
Pointing Dec	0	-3.971577245855572	Primary exposure time	0.000000	3.2
Pointing Roll	0.0	63.70525933426398			
SIM focus pos (mm)	-0.782348	-0.6828225247311905			
SIM defocus (mm)	0	0.8505141146731063			
SIM translation stage pos (mm)	-233.592463	250.466033080201			
SIM translation stage offset (mm)	0	-0.01005468664627074			
Observation start time	129072394.957	129072394.18871			
Observation start date	2002-02-02T21:26:35	2002-02-02T21:26:34			
Observation end time	129104049.008	129104048.23999			
Observation end date	2002-02-03T06:14:09	2002-02-03T06:14:08			
Read mode	TIMED	TIMED			

## 2.3 Aspect



## **2.4 Star Slots**

## **2.5 FID Slots**

## A Summary

### A.1 Status

V&V Scientist	Jen Lauer
V&V Date (YYYY-MM-DD)	2006.09.01
V&V Edition	1
V&V Disposition and Status	OK
V&V Charge Time	7.6224

### A.2 Comments