

V&V Reference Report

L2 ASCDS Version : 7.6.8.1

Observation 61321 - L2 Version 001
Chandra X-Ray Center

L2 Processing Date : Aug 31 2006

Contents

1	Front	2
2	OBI	3
2.1	OBI	3
2.1.1	Images	3
2.1.2	Bias	3
2.1.3	Parameters	4
2.1.4	Events	4
2.2	Compared Parameters	5
2.3	Aspect	6
2.4	Star Slots	8
2.5	FID Slots	8
A	Summary	9
A.1	Status	9
A.2	Comments	9

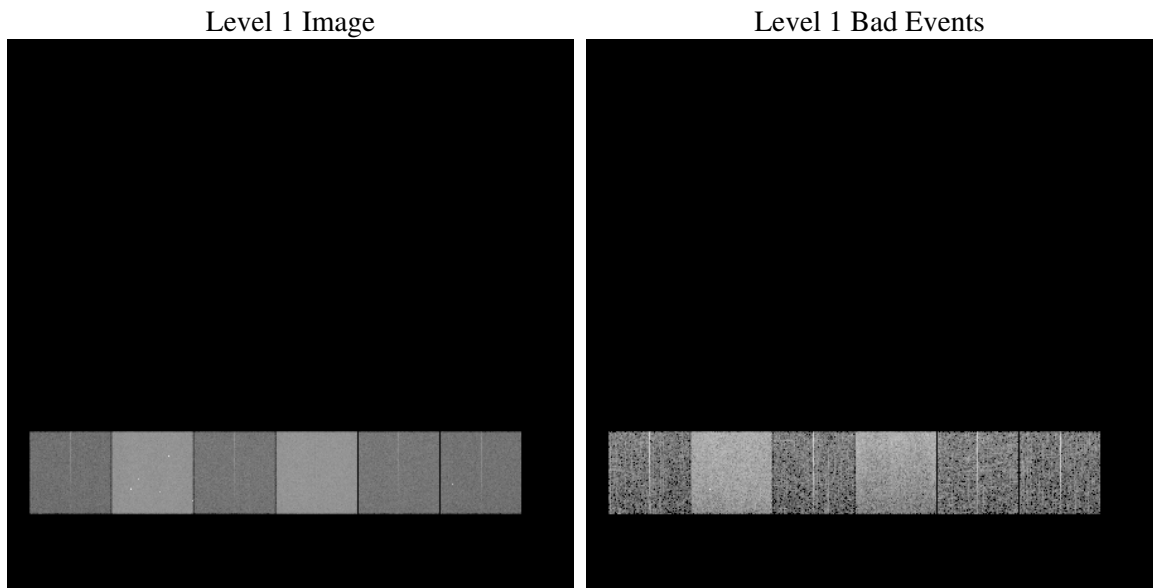
1 Front

seq_num	
obs_id	61321
title	ACIS-456789 diagnostics
observer	CHANDRA engineering request/realtime commanding
object	
dtcycle	0
cycle	P
ra_targ	0.0
dec_targ	0.0
ra_nom	90.014850264183
dec_nom	29.974414727303
roll_nom	263.88600355841
revision	2
ontime	6407.0396369249
livetime	6325.909843186
ontime4	2401.4346188009
ontime5	6867.4327811152
ontime6	2618.5427001715
ontime7	6407.0396369249
ontime8	2670.4816491753
ontime9	2511.4654596895
l2events	1183776

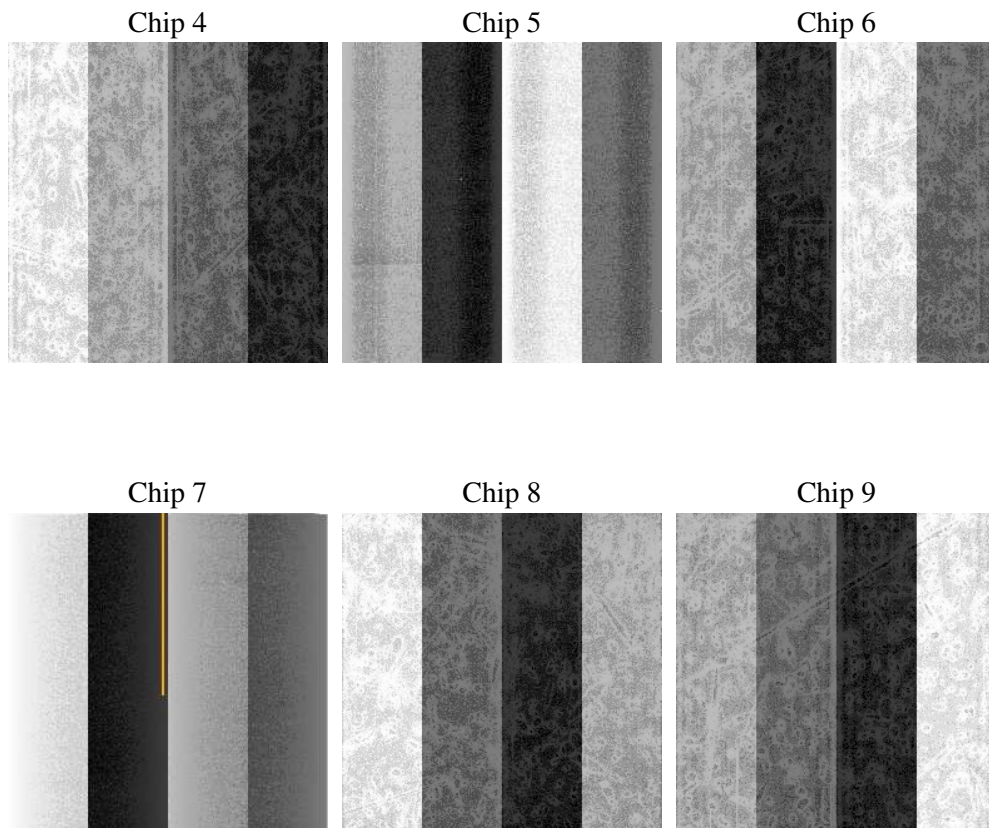
2 OBI

2.1 OBI

2.1.1 Images



2.1.2 Bias



2.1.3 Parameters

obi_num	0
ascdsver	7.6.8.1
caldsver	3.2.3
date	2006-09-01T02:01:54
revision	2

sched_exp_time	0.0
ontime	6407.4716371745
ontime4	2401.6082317829
ontime5	6867.6884740889
ontime6	2618.7573531568
ontime7	6407.4716371745
ontime8	2670.614222154
ontime9	2511.8032326698
l1events	1420999

2.1.4 Events

	ccd 4	ccd 5	ccd 6	ccd 7	ccd 8	ccd 9
level 1 events	145139	386780	167575	392963	172957	155585
rejected events	19555	56484	19855	45534	21579	19233
rejected %	13%	14%	11%	11%	12%	12%

	ccd 4	ccd 5	ccd 6	ccd 7	ccd 8	ccd 9
grade 0 events	70809	44441	81128	65063	83565	75143
	48%	11%	48%	16%	48%	48%
grade 1 events	361	229	425	134	392	362
	0%	0%	0%	0%	0%	0%
grade 2 events	22354	155695	25596	104009	26503	24227
	15%	40%	15%	26%	15%	15%
grade 3 events	7845	11775	9039	26654	9797	8238
	5%	3%	5%	6%	5%	5%
grade 4 events	7619	11530	8868	26207	9557	8270
	5%	2%	5%	6%	5%	5%
grade 5 events	1190	6646	1541	6286	1561	1413
	0%	1%	0%	1%	0%	0%
grade 6 events	16957	106855	23089	125496	21956	20474
	11%	27%	13%	31%	12%	13%
grade 7 events	18004	49609	17889	39114	19626	17458
	12%	12%	10%	9%	11%	11%

2.2 Compared Parameters

Parameter	Planned	Actual	Parameter	Planned	Actual
Instrument	ACIS	ACIS	Obspar format version number	6	6
Detector	ACIS-456789	ACIS-456789	Obspar file type	PREDICTED	ACTUAL
Grating	NONE	NONE	Obspar update status	NONE	UPDATED
Data mode	FAINT	FAINT	On-chip summing requested	N	N
Observation mode	SECONDARY	SECONDARY	Subarray requested	NONE	NONE
Pointing RA	0	90.01485026418335	Alternating exposures requested	N	N
Pointing Dec	0	29.97441472730312	Primary exposure time	3.2	3.2
Pointing Roll	0.0	263.8860035584103			
SIM focus pos (mm)	-0.684267	-0.6828225247311905			
SIM defocus (mm)	0	0.8505141146731063			
SIM translation stage pos (mm)	-190.132523	250.466033080201			
SIM translation stage offset (mm)	0	-0.01005468664627074			
Observation start time	129298844.116297	129298843.34784			
Observation start date	2002-02-05T12:20:44	2002-02-05T12:20:43			
Observation end time	129310096.56675	129310095.79829			
Observation end date	2002-02-05T15:28:17	2002-02-05T15:28:15			
Read mode	TIMED	TIMED			

2.3 Aspect

2.4 Star Slots

2.5 FID Slots

A Summary

A.1 Status

V&V Scientist	Jen Lauer
V&V Date (YYYY-MM-DD)	2006.09.01
V&V Edition	1
V&V Disposition and Status	OK
V&V Charge Time	6.40703963

A.2 Comments