

V&V Reference Report

L2 ASCDS Version : 7.6.8.1

Observation 61308 - L2 Version 001
Chandra X-Ray Center

L2 Processing Date : Sep 1 2006

Contents

1	Front	2
2	OBI	3
2.1	OBI	3
2.1.1	Images	3
2.1.2	Bias	3
2.1.3	Parameters	4
2.1.4	Events	4
2.2	Compared Parameters	5
2.3	Aspect	6
2.4	Star Slots	8
2.5	FID Slots	8
A	Summary	9
A.1	Status	9
A.2	Comments	9

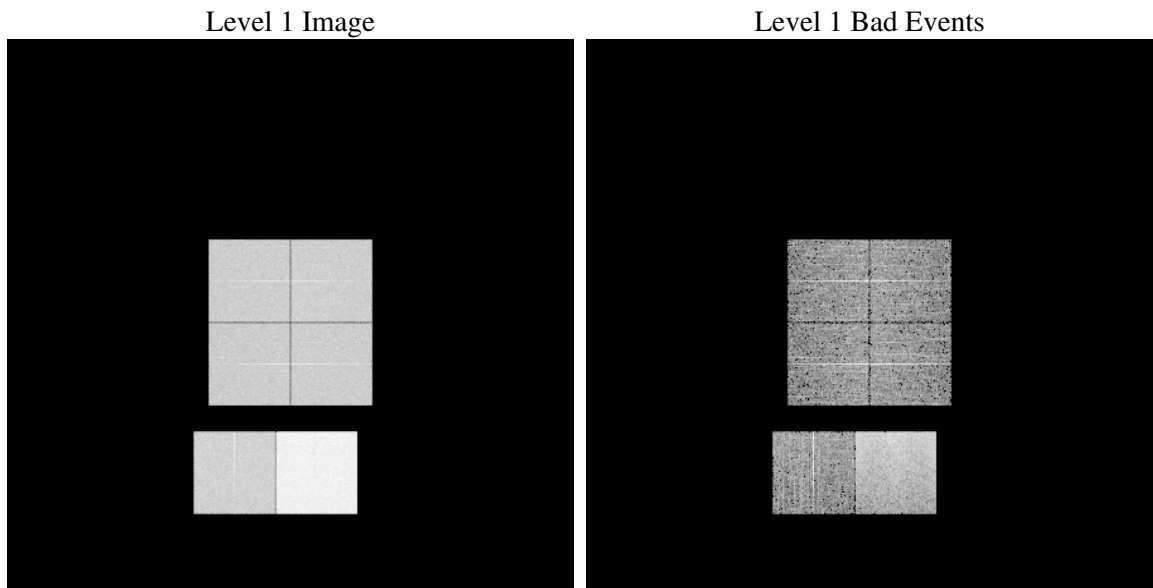
1 Front

seq_num	
obs_id	61308
title	ACIS-012367 diagnostics
observer	CHANDRA engineering request/realtime commanding
object	
dtcycle	0
cycle	P
ra_targ	0.0
dec_targ	0.0
ra_nom	239.07031345731
dec_nom	5.5069366572486
roll_nom	76.806839638677
revision	2
ontime	8294.4000077248
livetime	8189.3713205389
ontime0	3309.7814616561
ontime1	3424.0563244522
ontime2	3142.1285399944
ontime3	3229.4718516469
ontime6	3478.3152723014
ontime7	8294.4000077248
l2events	1291095

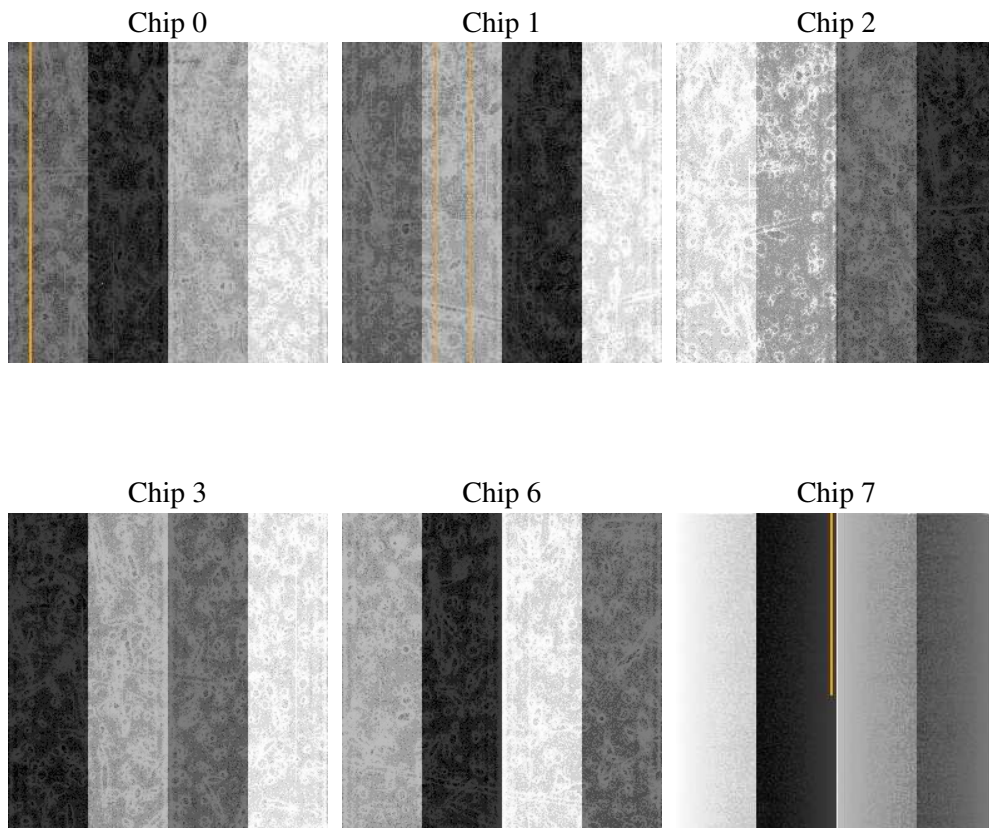
2 OBI

2.1 OBI

2.1.1 Images



2.1.2 Bias



2.1.3 Parameters

obi_num	0
ascdsver	7.6.8.1
caldsver	3.2.3
date	2006-09-01T04:05:16
revision	2

sched_exp_time	0.0
ontime	8296.9561347216
ontime0	3312.337588653
ontime1	3425.7735198587
ontime2	3143.8046953976
ontime3	3231.3121670485
ontime6	3480.8713992983
ontime7	8296.9561347216
l1events	1533816

2.1.4 Events

	ccd 0	ccd 1	ccd 2	ccd 3	ccd 6	ccd 7
level 1 events	201392	207332	194003	200662	221015	509412
rejected events	24776	24602	24706	25527	26799	61705
rejected %	12%	11%	12%	12%	12%	12%

	ccd 0	ccd 1	ccd 2	ccd 3	ccd 6	ccd 7
grade 0 events	97468	100854	93628	97503	105397	82701
	48%	48%	48%	48%	47%	16%
grade 1 events	528	491	488	492	522	217
	0%	0%	0%	0%	0%	0%
grade 2 events	31392	32398	29873	30681	33591	134694
	15%	15%	15%	15%	15%	26%
grade 3 events	11173	11655	10864	11009	12030	33645
	5%	5%	5%	5%	5%	6%
grade 4 events	11125	11583	10505	11192	12115	33080
	5%	5%	5%	5%	5%	6%
grade 5 events	1690	1881	1570	1717	1921	8439
	0%	0%	0%	0%	0%	1%
grade 6 events	25622	26393	24628	24917	31258	163771
	12%	12%	12%	12%	14%	32%
grade 7 events	22394	22077	22447	23151	24181	52865
	11%	10%	11%	11%	10%	10%

2.2 Compared Parameters

Parameter	Planned	Actual	Parameter	Planned	Actual
Instrument	ACIS	ACIS	Obspar format version number	6	6
Detector	ACIS-012367	ACIS-012367	Obspar file type	PREDICTED	ACTUAL
Grating	NONE	NONE	Obspar update status	NONE	UPDATED
Data mode	FAINT	FAINT	On-chip summing requested	N	N
Observation mode	SECONDARY	SECONDARY	Subarray requested	NONE	NONE
Pointing RA	0	239.0703134573119	Alternating exposures requested	N	N
Pointing Dec	0	5.506936657248584	Primary exposure time	0.000000	3.2
Pointing Roll	0.0	76.80683963867699			
SIM focus pos (mm)	-0.782348	-0.7809083437167272			
SIM defocus (mm)	0	0.7524282956875696			
SIM translation stage pos (mm)	-233.592463	250.4635187648994			
SIM translation stage offset (mm)	0	-0.007540371344731511			
Observation start time	130032981.946	130032981.17746			
Observation start date	2002-02-14T00:16:22	2002-02-14T00:16:21			
Observation end time	130043492.296	130043491.52789			
Observation end date	2002-02-14T03:11:32	2002-02-14T03:11:31			
Read mode	TIMED	TIMED			

2.3 Aspect

2.4 Star Slots

2.5 FID Slots

A Summary

A.1 Status

V&V Scientist	Jen Lauer
V&V Date (YYYY-MM-DD)	2006.09.01
V&V Edition	1
V&V Disposition and Status	OK
V&V Charge Time	8.2944

A.2 Comments