

# V&V Reference Report

## L2 ASCDS Version : 8.4.5

Observation 61277 - L2 Version 3  
Chandra X-Ray Center

L2 Processing Date : Oct 3 2012

## Contents

<b>1</b>	<b>Front</b>	<b>2</b>
<b>2</b>	<b>OBI</b>	<b>3</b>
2.1	OBI . . . . .	3
2.1.1	Images . . . . .	3
2.1.2	Bias . . . . .	3
2.1.3	Parameters . . . . .	4
2.1.4	Events . . . . .	4
2.2	Compared Parameters . . . . .	5
2.3	Star Slots . . . . .	6
2.4	FID Slots . . . . .	6
<b>A</b>	<b>Summary</b>	<b>7</b>
A.1	Status . . . . .	7
A.2	Comments . . . . .	7

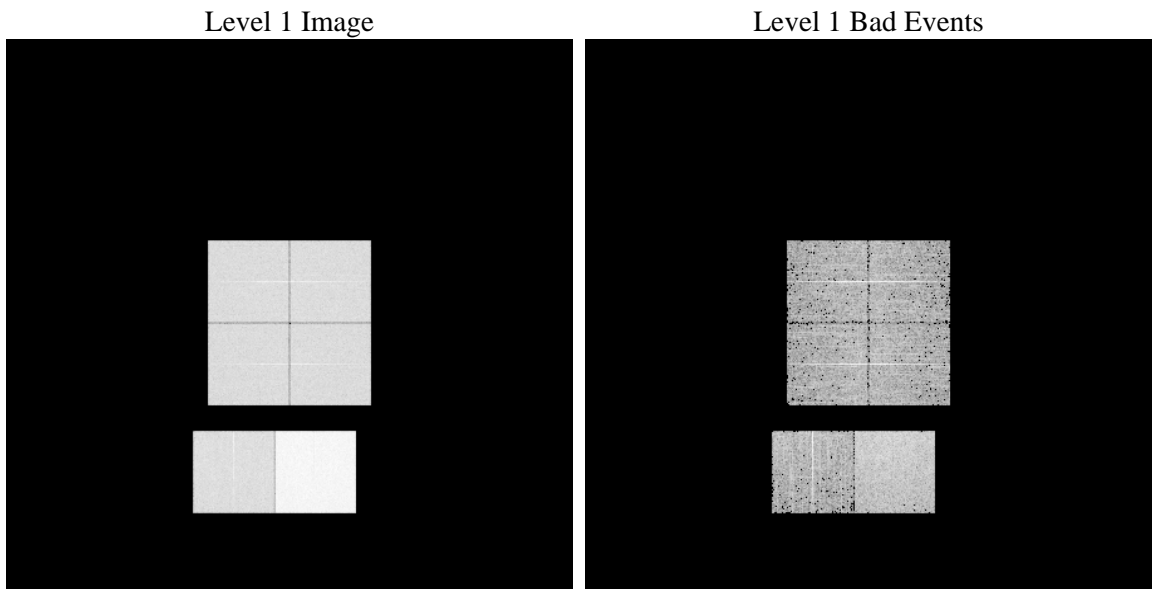
# 1 Front

seq_num	&#160	Sequence number
obs_id	61277	Observation id
title	ACIS-012367 diagnostics	Proposal title
observer	CHANDRA engineering request/realtime commanding	Principal investig
object	&#160	Source name
dtcycle	0	&#160
cycle	P	events from which exps? Prim/Second/Both
ra_targ	0.0	Observer's specified target RA [deg]
dec_targ	0.0	Observer's specified target Dec [deg]
ra_nom	281.97686469062	Nominal RA [deg]
dec_nom	-32.978965231803	Nominal Dec [deg]
roll_nom	99.902808462753	Nominal Roll [deg]
revision	3	Processing version of data
ontime	7792.000007242	Sum of GTIs [s]
livetime	7693.3330113711	Livetime [s]
ontime0	3163.1901494116	Sum of GTIs [s]
ontime1	3224.8106301874	Sum of GTIs [s]
ontime2	3066.0188180059	Sum of GTIs [s]
ontime3	3066.661739409	Sum of GTIs [s]
ontime6	3257.2386827618	Sum of GTIs [s]
ontime7	7792.000007242	Sum of GTIs [s]
l2events	1227850	Number of level 2 events

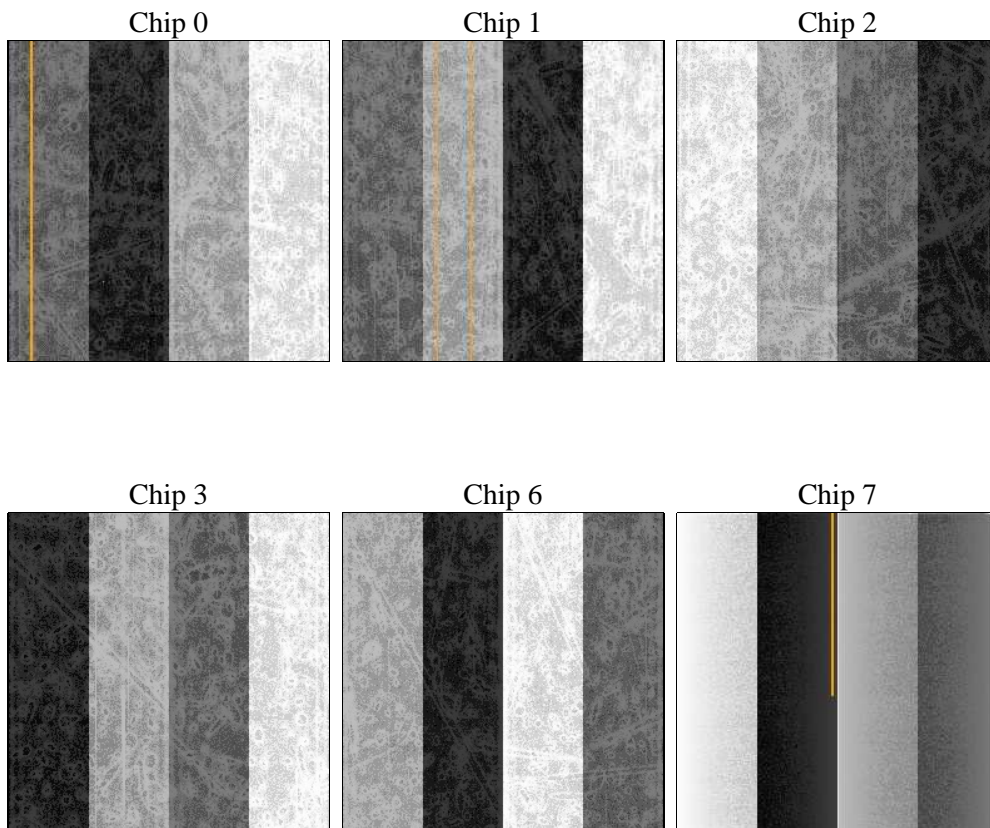
## 2 OBI

### 2.1 OBI

#### 2.1.1 Images



#### 2.1.2 Bias



### 2.1.3 Parameters

obi_num	0	Obi number	sched_exp_time	0.0	[s] Scheduled observation exposure time
ascdsver	8.4.5	Processing system revision	ontime	7792.000007242	Sum of GTIs [s]
caldsver	4.5.2	&#160	ontime0	3163.1901494116	Sum of GTIs [s]
date	2012-10-03T08:26:40	Date and time of file creation	ontime1	3224.8106301874	Sum of GTIs [s]
revision	3	Processing version of data	ontime2	3066.0188180059	Sum of GTIs [s]
			ontime3	3066.661739409	Sum of GTIs [s]
			ontime6	3257.2386827618	Sum of GTIs [s]
			ontime7	7792.000007242	Sum of GTIs [s]
			l1events	1442650	Number of level 1 events

### 2.1.4 Events

	ccd 0	ccd 1	ccd 2	ccd 3	ccd 6	ccd 7		ccd 0	ccd 1	ccd 2	ccd 3	ccd 6	ccd 7
level 1 events	190926	192993	187400	188299	206469	476563	grade 0 events	92514	93538	91016	92155	98482	110876
rejected events	23000	23289	23770	24074	25485	43009		48%	48%	48%	48%	47%	23%
rejected %	12%	12%	12%	12%	12%	9%	grade 1 events	509	472	480	453	486	294
								0%	0%	0%	0%	0%	0%
							grade 2 events	29930	30009	28874	28696	31338	96412
								15%	15%	15%	15%	15%	20%
							grade 3 events	10563	10697	10278	10416	11263	44364
								5%	5%	5%	5%	5%	9%
							grade 4 events	10670	10816	10379	10445	11125	43986
								5%	5%	5%	5%	5%	9%
							grade 5 events	1628	1642	1593	1620	1819	8568
								0%	0%	0%	0%	0%	1%
							grade 6 events	24249	24644	23083	22697	28776	138087
								12%	12%	12%	12%	13%	28%
							grade 7 events	20863	21175	21697	21817	23180	33976
								10%	10%	11%	11%	11%	7%

## 2.2 Compared Parameters

Parameter	Planned	Actual	Parameter	Planned	Actual
Instrument	ACIS	ACIS	Obspar format version number	7	7
Detector	ACIS-012367	ACIS-012367	Obspar file type	PREDICTED	ACTUAL
Grating	NONE	NONE	Obspar update status	NONE	UPDATED
Data mode	FAINT	FAINT	On-chip summing requested	N	N
Observation mode	SECONDARY	SECONDARY	Subarray requested	NONE	NONE
[deg] Pointing RA	0	281.976864690621	Alternating exposures requested	N	N
[deg] Pointing Dec	0	-32.97896523180282	[s] Primary exposure time	3.2	3.2
[deg] Pointing Roll	0.0	99.90280846275256			
[mm] SIM focus pos	-0.782348	-1.038866356238299			
[mm] SIM defocus	0	0.4944702831659975			
[mm] SIM translation stage pos	-233.592463	250.466033080201			
[mm] SIM translation stage offset	0	-0.01005468664627074			
[s] Observation start time (MET)	131589813.508844	131589812.74037			
Observation start date	2002-03-04T00:43:34	2002-03-04T00:43:32			
[s] Observation end time (MET)	131620905.860103	131620905.09163			
Observation end date	2002-03-04T09:21:46	2002-03-04T09:21:45			
Read mode	TIMED	TIMED			

## **2.3 Star Slots**

## **2.4 FID Slots**

## A Summary

### A.1 Status

V&V Scientist	Jen Lauer
V&V Date (YYYY-MM-DD)	2012.10.04
V&V Edition	1
V&V Disposition and Status	OK
V&V Charge Time	7.792000007242

### A.2 Comments