

# V&V Reference Report

## L2 ASCDS Version : 7.6.8.1

Observation 61260 - L2 Version 001  
Chandra X-Ray Center

L2 Processing Date : Sep 8 2006

## Contents

<b>1</b>	<b>Front</b>	<b>2</b>
<b>2</b>	<b>OBI</b>	<b>3</b>
2.1	OBI . . . . .	3
2.1.1	Images . . . . .	3
2.1.2	Bias . . . . .	3
2.1.3	Parameters . . . . .	4
2.1.4	Events . . . . .	4
2.2	Compared Parameters . . . . .	5
2.3	Aspect . . . . .	6
2.4	Star Slots . . . . .	8
2.5	FID Slots . . . . .	8
<b>A</b>	<b>Summary</b>	<b>9</b>
A.1	Status . . . . .	9
A.2	Comments . . . . .	9

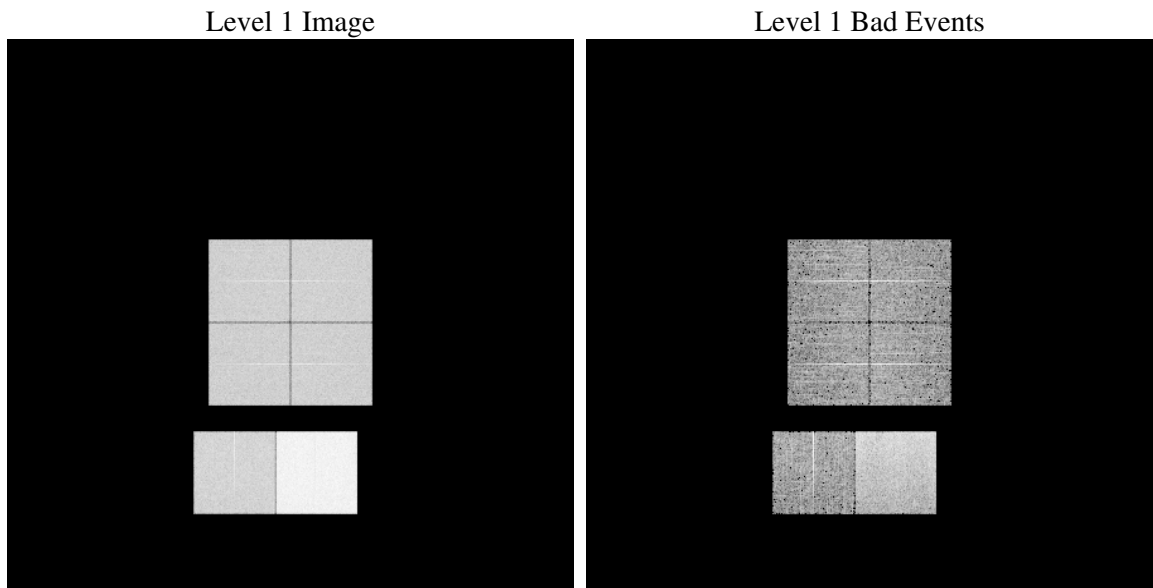
# 1 Front

seq_num	&#160
obs_id	61260
title	ACIS-012367 diagnostics
observer	CHANDRA engineering request/realtime commanding
object	&#160
dtcycle	0
cycle	P
ra_targ	0.0
dec_targ	0.0
ra_nom	235.5905858611
dec_nom	-23.572688024052
roll_nom	74.775572698035
revision	2
ontime	8358.4000077844
livetime	8252.5609140615
ontime0	3451.714626044
ontime1	3519.6266336143
ontime2	3341.6027713418
ontime3	3347.8528195024
ontime6	3639.8177266121
ontime7	8358.4000077844
l2events	1304016

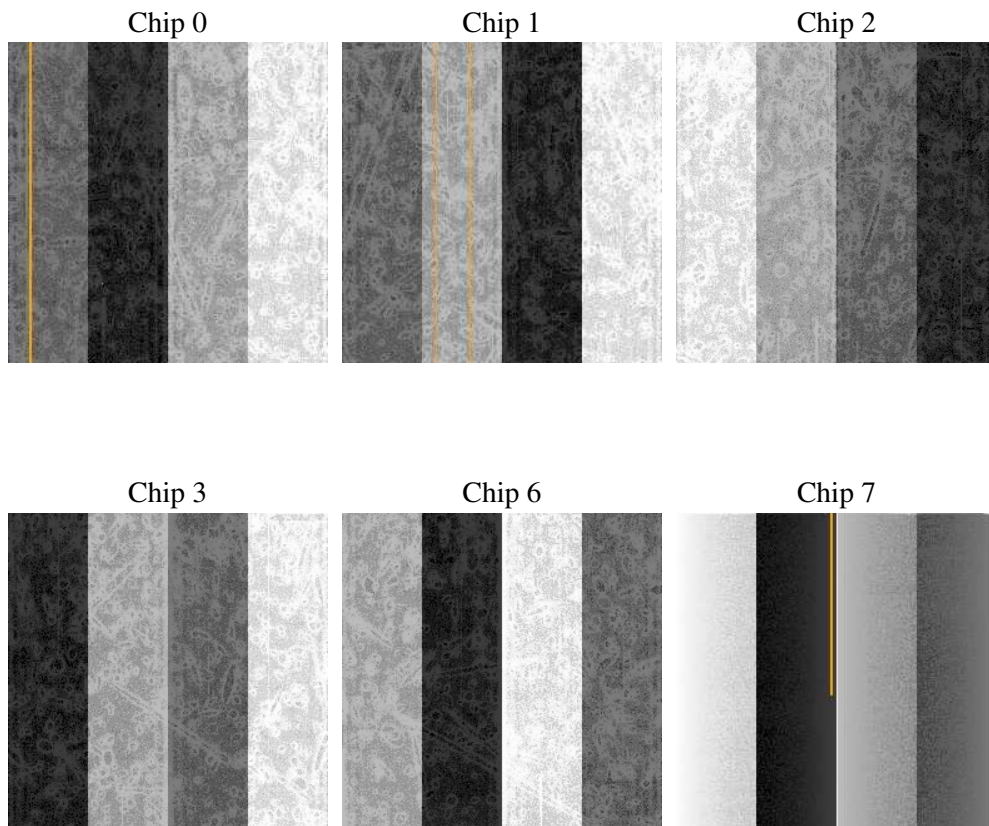
## 2 OBI

### 2.1 OBI

#### 2.1.1 Images



#### 2.1.2 Bias



### 2.1.3 Parameters

obi_num	1
ascdsver	7.6.8.1
caldbver	3.2.3
date	2006-09-08T13:02:24
revision	2

sched_exp_time	0.0
ontime	8465.4884628206
ontime0	3500.3166417331
ontime1	3561.8955044895
ontime2	3377.1586766392
ontime3	3390.1216803938
ontime6	3681.8146220595
ontime7	8465.4884628206
l1events	1562258

### 2.1.4 Events

	ccd 0	ccd 1	ccd 2	ccd 3	ccd 6	ccd 7
level 1 events	207525	209945	202284	205211	230089	507204
rejected events	26601	26062	25896	27692	29169	66418
rejected %	12%	12%	12%	13%	12%	13%

	ccd 0	ccd 1	ccd 2	ccd 3	ccd 6	ccd 7
grade 0 events	101100	102820	99182	100095	110533	82644
	48%	48%	49%	48%	48%	16%
grade 1 events	523	508	497	519	513	208
	0%	0%	0%	0%	0%	0%
grade 2 events	32512	32730	31254	31697	35431	134280
	15%	15%	15%	15%	15%	26%
grade 3 events	11675	11852	11138	11593	12440	33383
	5%	5%	5%	5%	5%	6%
grade 4 events	11647	11957	11146	11338	12429	33189
	5%	5%	5%	5%	5%	6%
grade 5 events	1678	1760	1618	1797	1948	8262
	0%	0%	0%	0%	0%	1%
grade 6 events	26561	26760	25593	24996	32354	163006
	12%	12%	12%	12%	14%	32%
grade 7 events	21829	21558	21856	23176	24441	52232
	10%	10%	10%	11%	10%	10%

## 2.2 Compared Parameters

Parameter	Planned	Actual	Parameter	Planned	Actual
Instrument	ACIS	ACIS	Obspar format version number	6	6
Detector	ACIS-012367	ACIS-012367	Obspar file type	PREDICTED	ACTUAL
Grating	NONE	NONE	Obspar update status	NONE	UPDATED
Data mode	FAINT	FAINT	On-chip summing requested	N	N
Observation mode	SECONDARY	SECONDARY	Subarray requested	NONE	NONE
Pointing RA	0	235.5905858610953	Alternating exposures requested	N	N
Pointing Dec	0	-23.57268802405226	Primary exposure time	3.2	3.2
Pointing Roll	0.0	74.77557269803495			
SIM focus pos (mm)	-0.782348	-0.6828225247311905			
SIM defocus (mm)	0	0.8505141146731063			
SIM translation stage pos (mm)	-233.592463	250.466033080201			
SIM translation stage offset (mm)	0	-0.01005468664627074			
Observation start time	132997107.815819	132997107.04734			
Observation start date	2002-03-20T07:38:28	2002-03-20T07:38:27			
Observation end time	133011589.016406	133011588.24793			
Observation end date	2002-03-20T11:39:49	2002-03-20T11:39:48			
Read mode	TIMED	TIMED			

## 2.3 Aspect



## **2.4 Star Slots**

## **2.5 FID Slots**



## A Summary

### A.1 Status

V&V Scientist	Beth Sundheim
V&V Date (YYYY-MM-DD)	2006.09.08
V&V Edition	1
V&V Disposition and Status	OK
V&V Charge Time	8.3584

### A.2 Comments