

# V&V Reference Report

## L2 ASCDS Version : 7.6.8.1

Observation 61240 - L2 Version 001  
Chandra X-Ray Center

L2 Processing Date : Sep 9 2006

## Contents

<b>1</b>	<b>Front</b>	<b>2</b>
<b>2</b>	<b>OBI</b>	<b>3</b>
2.1	OBI . . . . .	3
2.1.1	Images . . . . .	3
2.1.2	Bias . . . . .	3
2.1.3	Parameters . . . . .	4
2.1.4	Events . . . . .	4
2.2	Compared Parameters . . . . .	5
2.3	Aspect . . . . .	6
2.4	Star Slots . . . . .	8
2.5	FID Slots . . . . .	8
<b>A</b>	<b>Summary</b>	<b>9</b>
A.1	Status . . . . .	9
A.2	Comments . . . . .	9

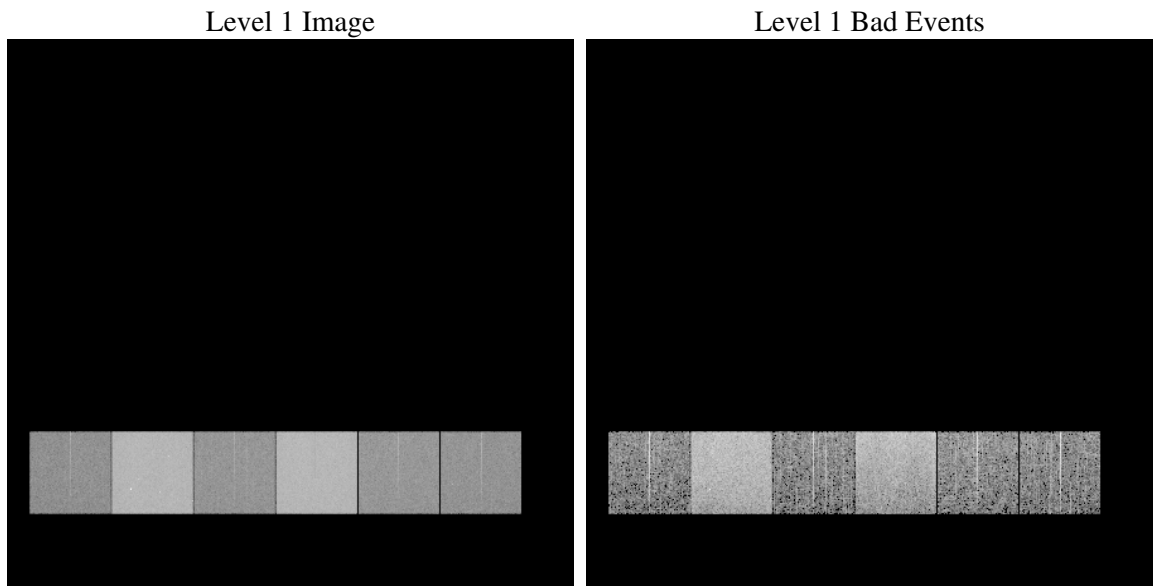
# 1 Front

seq_num	&#160
obs_id	61240
title	ACIS-456789 diagnostics
observer	CHANDRA engineering request/realtime commanding
object	&#160
dtcycle	0
cycle	P
ra_targ	0.0
dec_targ	0.0
ra_nom	165.03289236313
dec_nom	-35.009614323492
roll_nom	307.53705272767
revision	2
ontime	6777.6166869998
livetime	6691.7944235182
ontime4	2493.0202773213
ontime5	7292.9316084683
ontime6	2710.1697475016
ontime7	6777.6166869998
ontime8	2808.1139905453
ontime9	2639.3749698997
l2events	1202942

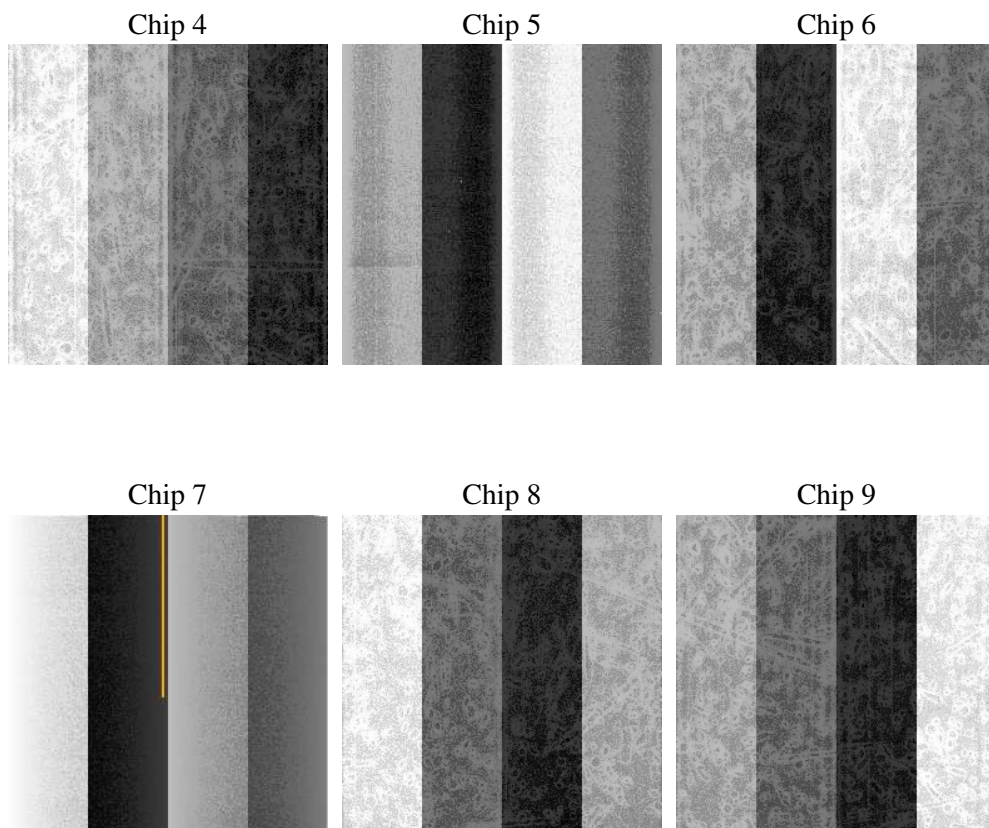
## 2 OBI

### 2.1 OBI

#### 2.1.1 Images



#### 2.1.2 Bias



### 2.1.3 Parameters

obi_num	2
ascdsver	7.6.8.1
caldsver	3.2.3
date	2006-09-09T20:41:10
revision	2

sched_exp_time	0.0
ontime	6780.1950422525
ontime4	2495.5986325741
ontime5	7295.509963721
ontime6	2712.7481027544
ontime7	6780.1950422525
ontime8	2809.9792428017
ontime9	2641.4454221427
l1events	1448756

### 2.1.4 Events

	ccd 4	ccd 5	ccd 6	ccd 7	ccd 8	ccd 9
level 1 events	145392	396435	168293	403781	176150	158705
rejected events	20381	59770	21375	48589	23031	20841
rejected %	14%	15%	12%	12%	13%	13%

	ccd 4	ccd 5	ccd 6	ccd 7	ccd 8	ccd 9
grade 0 events	70811	42934	80233	67204	84471	75424
	48%	10%	47%	16%	47%	47%
grade 1 events	373	188	370	177	422	363
	0%	0%	0%	0%	0%	0%
grade 2 events	22178	159614	25583	105713	27067	24441
	15%	40%	15%	26%	15%	15%
grade 3 events	7670	12134	9174	27591	9832	8589
	5%	3%	5%	6%	5%	5%
grade 4 events	7795	11915	8998	27159	9754	8705
	5%	3%	5%	6%	5%	5%
grade 5 events	1293	6840	1567	6700	1715	1466
	0%	1%	0%	1%	0%	0%
grade 6 events	16727	110236	23102	127691	22162	20875
	11%	27%	13%	31%	12%	13%
grade 7 events	18545	52574	19266	41546	20727	18842
	12%	13%	11%	10%	11%	11%

## 2.2 Compared Parameters

Parameter	Planned	Actual	Parameter	Planned	Actual
Instrument	ACIS	ACIS	Obspar format version number	6	6
Detector	ACIS-456789	ACIS-456789	Obspar file type	PREDICTED	ACTUAL
Grating	NONE	NONE	Obspar update status	NONE	UPDATED
Data mode	FAINT	FAINT	On-chip summing requested	N	N
Observation mode	SECONDARY	SECONDARY	Subarray requested	NONE	NONE
Pointing RA	0	165.0328923631255	Alternating exposures requested	N	N
Pointing Dec	0	-35.00961432349198	Primary exposure time	0.000000	3.2
Pointing Roll	0.0	307.5370527276729			
SIM focus pos (mm)	-0.684267	-0.6828225247311905			
SIM defocus (mm)	0	0.8505141146731063			
SIM translation stage pos (mm)	-190.132523	250.466033080201			
SIM translation stage offset (mm)	0	-0.01005468664627074			
Observation start time	134553211.885	134553210.86044			
Observation start date	2002-04-07T07:53:32	2002-04-07T07:53:30			
Observation end time	134591081.537	134591080.51197			
Observation end date	2002-04-07T18:24:42	2002-04-07T18:24:40			
Read mode	TIMED	TIMED			

## 2.3 Aspect



## **2.4 Star Slots**

## **2.5 FID Slots**



## A Summary

### A.1 Status

V&V Scientist	Jen Lauer
V&V Date (YYYY-MM-DD)	2006.09.10
V&V Edition	1
V&V Disposition and Status	OK
V&V Charge Time	6.77761668

### A.2 Comments