

V&V Reference Report

L2 ASCDS Version : 7.6.8.1

Observation 61231 - L2 Version 001
Chandra X-Ray Center

L2 Processing Date : Sep 11 2006

Contents

1	Front	2
2	OBI	3
2.1	OBI	3
2.1.1	Images	3
2.1.2	Bias	3
2.1.3	Parameters	4
2.1.4	Events	4
2.2	Compared Parameters	5
2.3	Aspect	6
2.4	Star Slots	8
2.5	FID Slots	8
A	Summary	9
A.1	Status	9
A.2	Comments	9

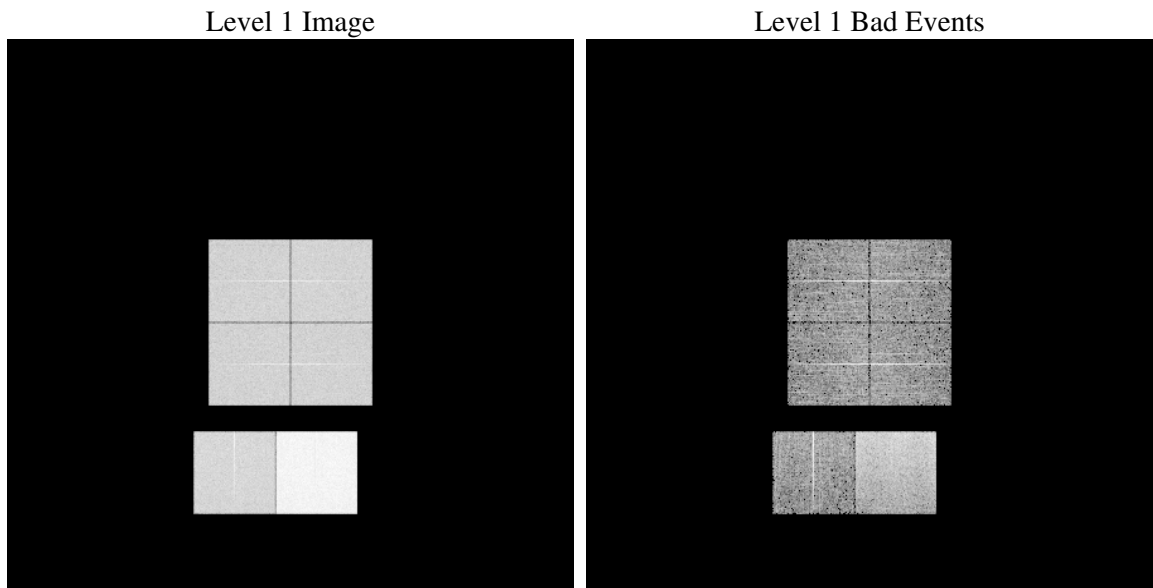
1 Front

seq_num	
obs_id	61231
title	ACIS-012367 diagnostics
observer	CHANDRA engineering request/realtime commanding
object	
dtcycle	0
cycle	P
ra_targ	0.0
dec_targ	0.0
ra_nom	349.86225978974
dec_nom	55.957778797657
roll_nom	43.326469183035
revision	2
ontime	8463.1744593382
livetime	8356.0086484222
ontime0	3562.8697577119
ontime1	3618.0080882013
ontime2	3459.2387970388
ontime3	3449.3520656228
ontime6	3786.6217960417
ontime7	8463.1744593382
l2events	1312662

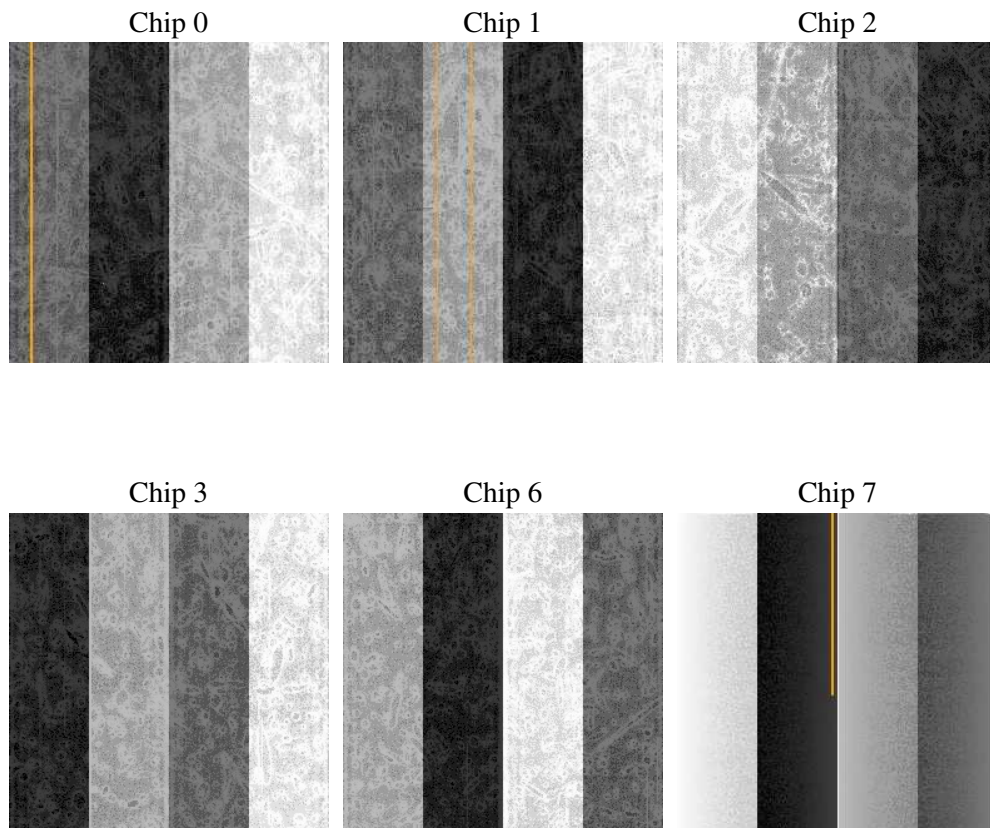
2 OBI

2.1 OBI

2.1.1 Images



2.1.2 Bias



2.1.3 Parameters

obi_num	0
ascdsver	7.6.8.1
caldbver	3.2.3
date	2006-09-11T11:25:06
revision	2

sched_exp_time	0.0
ontime	8465.4830740988
ontime0	3565.1373324692
ontime1	3620.2346229553
ontime2	3461.4242917895
ontime3	3451.7017203867
ontime6	3788.766250819
ontime7	8465.4830740988
l1events	1561308

2.1.4 Events

	ccd 0	ccd 1	ccd 2	ccd 3	ccd 6	ccd 7
level 1 events	207323	211709	205109	205177	231649	500341
rejected events	25225	25403	25906	25870	27571	62049
rejected %	12%	11%	12%	12%	11%	12%

	ccd 0	ccd 1	ccd 2	ccd 3	ccd 6	ccd 7
grade 0 events	100231	102602	99378	100361	111114	79611
	48%	48%	48%	48%	47%	15%
grade 1 events	486	558	501	510	591	162
	0%	0%	0%	0%	0%	0%
grade 2 events	32232	32961	31661	31325	35425	132299
	15%	15%	15%	15%	15%	26%
grade 3 events	11484	11801	11359	11384	12543	32639
	5%	5%	5%	5%	5%	6%
grade 4 events	11733	11892	11440	11403	12587	32184
	5%	5%	5%	5%	5%	6%
grade 5 events	1765	1883	1777	1765	2104	8324
	0%	0%	0%	0%	0%	1%
grade 6 events	26592	27218	25559	25021	32571	161722
	12%	12%	12%	12%	14%	32%
grade 7 events	22800	22794	23434	23408	24714	53400
	10%	10%	11%	11%	10%	10%

2.2 Compared Parameters

Parameter	Planned	Actual	Parameter	Planned	Actual
Instrument	ACIS	ACIS	Obspar format version number	6	6
Detector	ACIS-012367	ACIS-012367	Obspar file type	PREDICTED	ACTUAL
Grating	NONE	NONE	Obspar update status	NONE	UPDATED
Data mode	FAINT	FAINT	On-chip summing requested	N	N
Observation mode	SECONDARY	SECONDARY	Subarray requested	NONE	NONE
Pointing RA	0	349.8622597897372	Alternating exposures requested	N	N
Pointing Dec	0	55.95777879765694	Primary exposure time	3.2	3.2
Pointing Roll	0.0	43.32646918303498			
SIM focus pos (mm)	-0.782348	-0.6828225247311905			
SIM defocus (mm)	0	0.8505141146731063			
SIM translation stage pos (mm)	-233.592463	250.466033080201			
SIM translation stage offset (mm)	0	-0.01005468664627074			
Observation start time	135276872.164553	135276871.13985			
Observation start date	2002-04-15T16:54:32	2002-04-15T16:54:31			
Observation end time	135298313.115424	135298312.09072			
Observation end date	2002-04-15T22:51:53	2002-04-15T22:51:52			
Read mode	TIMED	TIMED			

2.3 Aspect

2.4 Star Slots

2.5 FID Slots

A Summary

A.1 Status

V&V Scientist	Jen Lauer
V&V Date (YYYY-MM-DD)	2006.09.11
V&V Edition	1
V&V Disposition and Status	OK
V&V Charge Time	8.46317445

A.2 Comments