

V&V Reference Report

L2 ASCDS Version : 8.4.5

Observation 61205 - L2 Version 3
Chandra X-Ray Center

L2 Processing Date : Oct 7 2012

Contents

1	Front	2
2	OBI	3
2.1	OBI	3
2.1.1	Images	3
2.1.2	Bias	3
2.1.3	Parameters	4
2.1.4	Events	4
2.2	Compared Parameters	5
2.3	Star Slots	6
2.4	FID Slots	6
A	Summary	7
A.1	Status	7
A.2	Comments	7

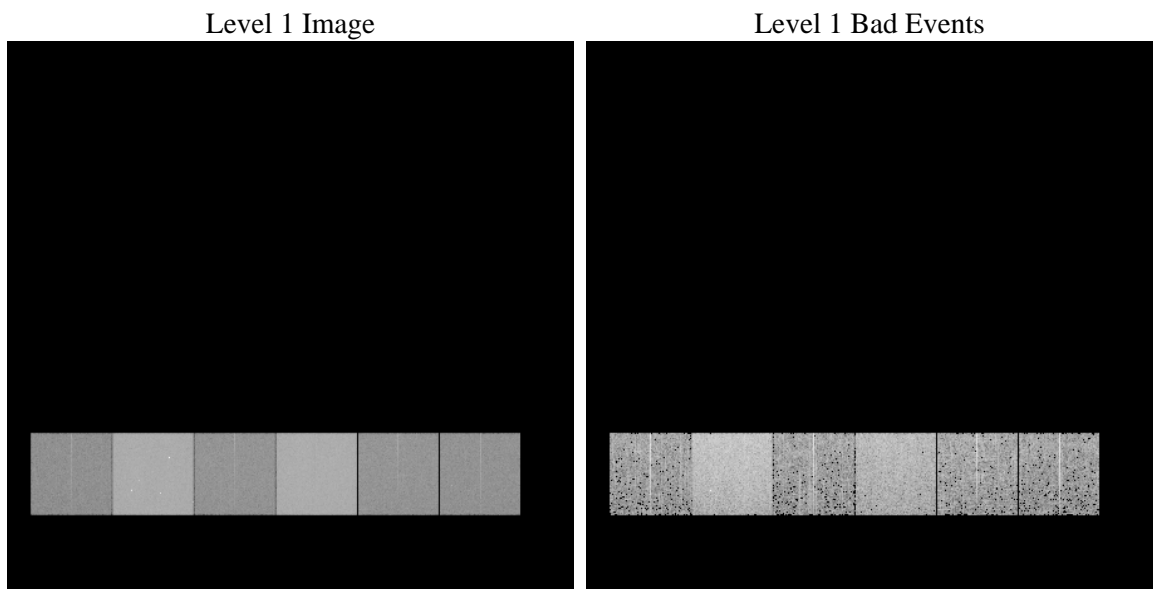
1 Front

seq_num	 	Sequence number
obs_id	61205	Observation id
title	ACIS-456789 diagnostics	Proposal title
observer	CHANDRA engineering request/realtime commanding	Principal investig
object	 	Source name
dtcycle	0	
cycle	P	events from which exps? Prim/Second/Both
ra_targ	0.0	Observer's specified target RA [deg]
dec_targ	0.0	Observer's specified target Dec [deg]
ra_nom	140.01143799589	Nominal RA [deg]
dec_nom	-40.027251031958	Nominal Dec [deg]
roll_nom	255.01516284845	Nominal Roll [deg]
revision	3	Processing version of data
ontime	6878.0489043593	Sum of GTIs [s]
livetime	6790.9549076685	Livetime [s]
ontime4	2520.462988019	Sum of GTIs [s]
ontime5	7425.7714998126	Sum of GTIs [s]
ontime6	2782.9455795288	Sum of GTIs [s]
ontime7	6878.0489043593	Sum of GTIs [s]
ontime8	2779.7865197062	Sum of GTIs [s]
ontime9	2685.5914788842	Sum of GTIs [s]
l2events	1224266	Number of level 2 events

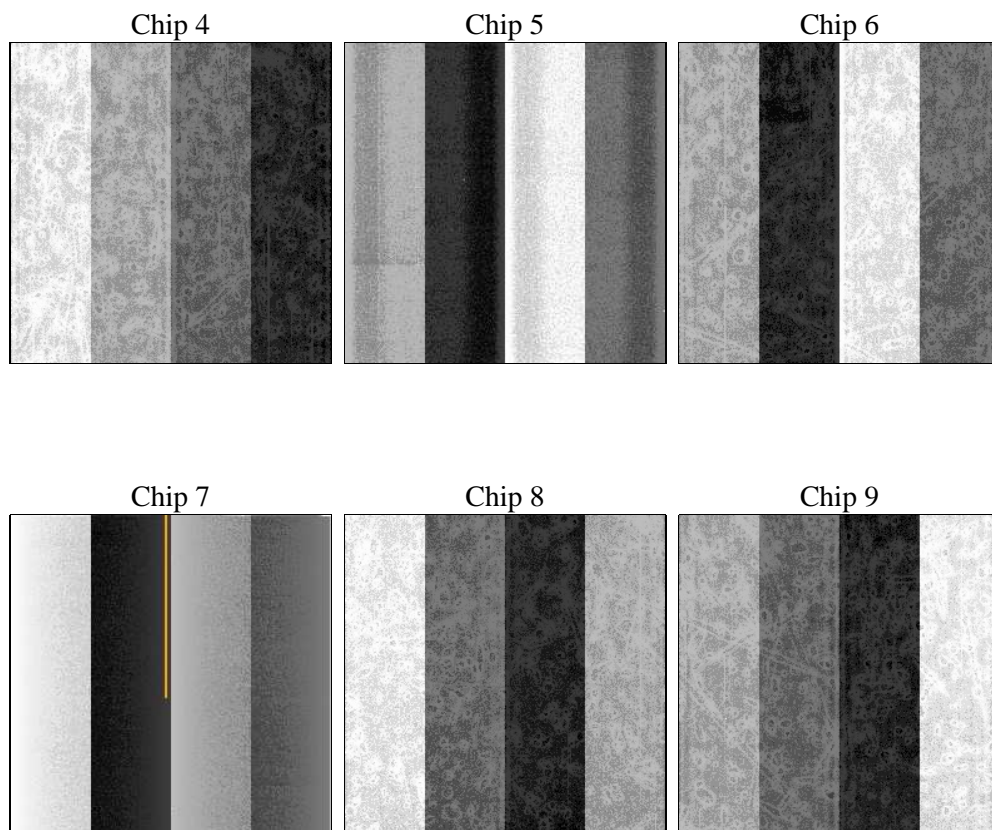
2 OBI

2.1 OBI

2.1.1 Images



2.1.2 Bias



2.1.3 Parameters

obi_num	0	Obi number	sched_exp_time	0.0	[s] Scheduled observation exposure time
ascdsver	8.4.5	Processing system revision	ontime	6878.0489043593	Sum of GTIs [s]
caldsver	4.5.2	 	ontime4	2520.462988019	Sum of GTIs [s]
date	2012-10-07T16:44:31	Date and time of file creation	ontime5	7425.7714998126	Sum of GTIs [s]
revision	3	Processing version of data	ontime6	2782.9455795288	Sum of GTIs [s]
			ontime7	6878.0489043593	Sum of GTIs [s]
			ontime8	2779.7865197062	Sum of GTIs [s]
			ontime9	2685.5914788842	Sum of GTIs [s]
			l1events	1448613	Number of level 1 events

2.1.4 Events

	ccd 4	ccd 5	ccd 6	ccd 7	ccd 8	ccd 9		ccd 4	ccd 5	ccd 6	ccd 7	ccd 8	ccd 9
level 1 events	145649	398344	169788	403660	173037	158135	grade 0 events	70637	87766	81304	93360	82158	75879
rejected events	20598	49875	20698	36013	22978	19354		48%	22%	47%	23%	47%	47%
rejected %	14%	12%	12%	8%	13%	12%	grade 1 events	385	386	408	254	384	410
								0%	0%	0%	0%	0%	0%
							grade 2 events	22162	121006	25918	81995	26791	24421
								15%	30%	15%	20%	15%	15%
							grade 3 events	7607	22792	9147	37312	9396	8605
								5%	5%	5%	9%	5%	5%
							grade 4 events	7708	22623	9262	36939	9319	8542
								5%	5%	5%	9%	5%	5%
							grade 5 events	1280	9164	1517	7241	1621	1493
								0%	2%	0%	1%	0%	0%
							grade 6 events	16937	94282	23459	118041	22395	21334
								11%	23%	13%	29%	12%	13%
							grade 7 events	18933	40325	18773	28518	20973	17451
								12%	10%	11%	7%	12%	11%

2.2 Compared Parameters

Parameter	Planned	Actual
Instrument	ACIS	ACIS
Detector	ACIS-456789	ACIS-456789
Grating	NONE	NONE
Data mode	FAINT	FAINT
Observation mode	SECONDARY	SECONDARY
[deg] Pointing RA	0	140.0114379958917
[deg] Pointing Dec	0	-40.02725103195775
[deg] Pointing Roll	0.0	255.0151628484499
[mm] SIM focus pos	-0.684267	-0.6828225247311905
[mm] SIM defocus	0	0.8505141146731063
[mm] SIM translation stage pos	-190.132523	250.4635187648994
[mm] SIM translation stage offset	0	-0.007540371344731511
[s] Observation start time (MET)	137752013.565	137752012.54068
Observation start date	2002-05-14T08:26:54	2002-05-14T08:26:52
[s] Observation end time (MET)	137787697.917	137787696.89213
Observation end date	2002-05-14T18:21:38	2002-05-14T18:21:36
Read mode	TIMED	TIMED

Parameter	Planned	Actual
Obspar format version number	7	7
Obspar file type	PREDICTED	ACTUAL
Obspar update status	NONE	UPDATED
On-chip summing requested	N	N
Subarray requested	NONE	NONE
Alternating exposures requested	N	N
[s] Primary exposure time	0.000000	3.2

2.3 Star Slots

2.4 FID Slots

A Summary

A.1 Status

V&V Scientist	Beth Sundheim
V&V Date (YYYY-MM-DD)	2012.10.17
V&V Edition	1
V&V Disposition and Status	OK
V&V Charge Time	6.8780489043593

A.2 Comments