

V&V Reference Report

L2 ASCDS Version : 8.4.5

Observation 61188 - L2 Version 3
Chandra X-Ray Center

L2 Processing Date : Oct 8 2012

Contents

1	Front	2
2	OBI	3
2.1	OBI	3
2.1.1	Images	3
2.1.2	Bias	3
2.1.3	Parameters	4
2.1.4	Events	4
2.2	Compared Parameters	5
2.3	Star Slots	6
2.4	FID Slots	6
A	Summary	7
A.1	Status	7
A.2	Comments	7

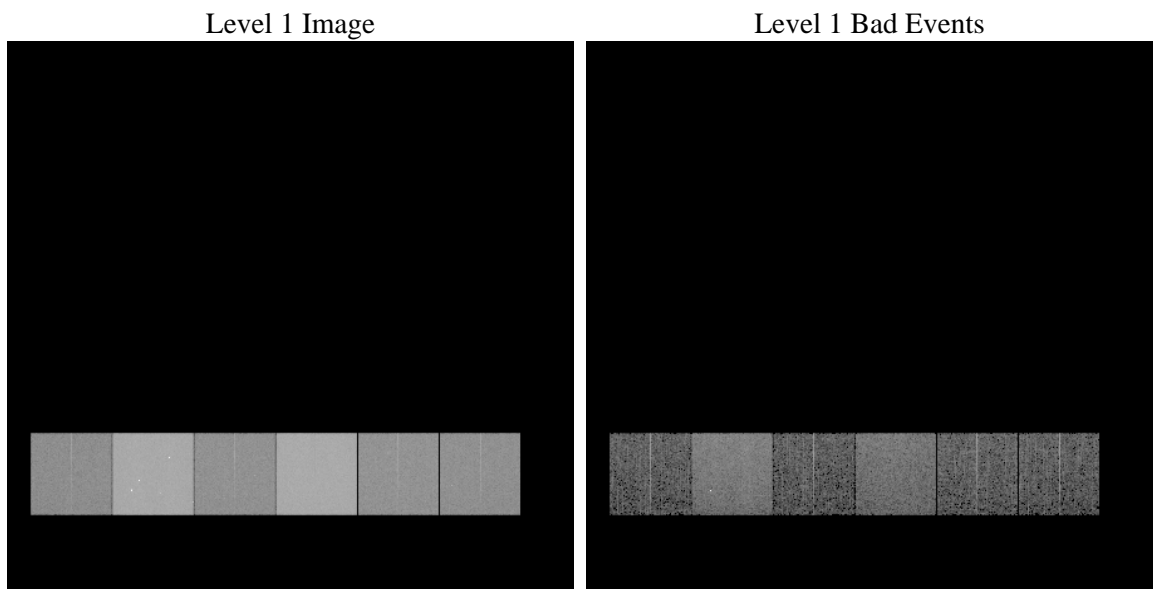
1 Front

seq_num	 	Sequence number
obs_id	61188	Observation id
title	ACIS-456789 diagnostics	Proposal title
observer	CHANDRA engineering request/realtime commanding	Principal investig
object	 	Source name
dtcycle	0	
cycle	P	events from which exps? Prim/Second/Both
ra_targ	0.0	Observer's specified target RA [deg]
dec_targ	0.0	Observer's specified target Dec [deg]
ra_nom	271.97814874781	Nominal RA [deg]
dec_nom	-13.980775085442	Nominal Dec [deg]
roll_nom	104.9692955207	Nominal Roll [deg]
revision	3	Processing version of data
ontime	7574.2319700718	Sum of GTIs [s]
livetime	7478.3224842118	Livetime [s]
ontime4	2790.532702446	Sum of GTIs [s]
ontime5	8084.0006778538	Sum of GTIs [s]
ontime6	3040.0918849111	Sum of GTIs [s]
ontime7	7574.2319700718	Sum of GTIs [s]
ontime8	3189.9934311807	Sum of GTIs [s]
ontime9	3001.1998734176	Sum of GTIs [s]
l2events	1324847	Number of level 2 events

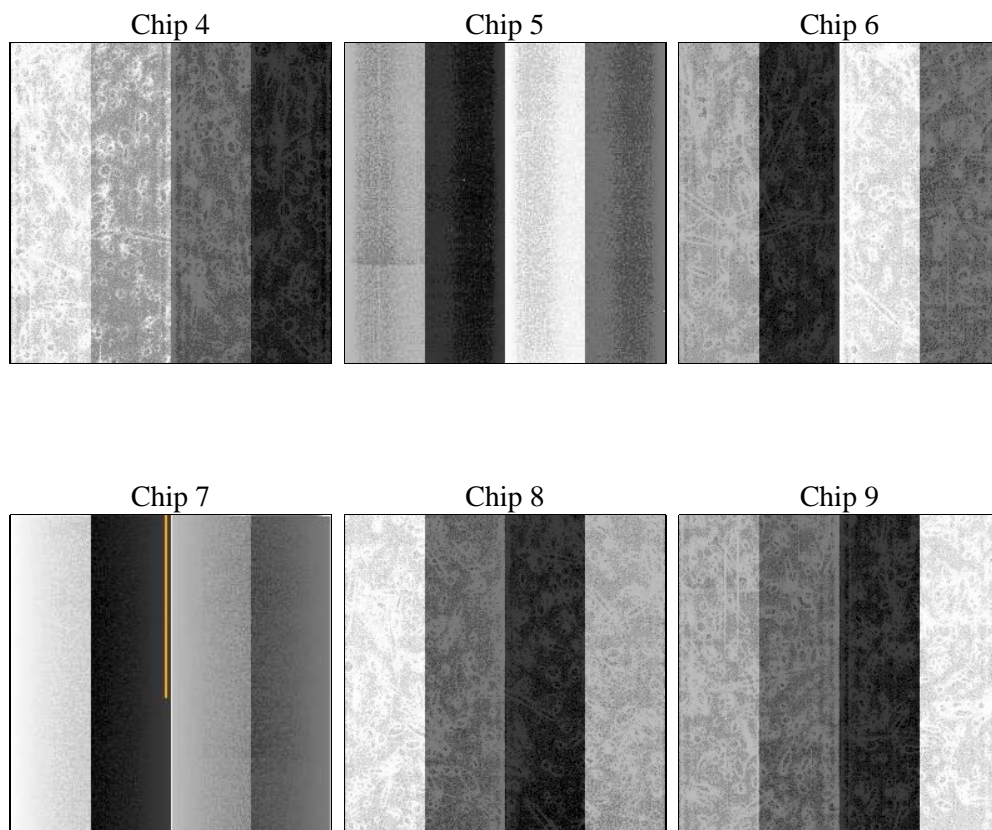
2 OBI

2.1 OBI

2.1.1 Images



2.1.2 Bias



2.1.3 Parameters

obi_num	0	Obi number	sched_exp_time	0.0	[s] Scheduled observation exposure time
ascdsver	8.4.5	Processing system revision	ontime	7574.2319700718	Sum of GTIs [s]
caldsver	4.5.2	 	ontime4	2790.532702446	Sum of GTIs [s]
date	2012-10-08T08:19:36	Date and time of file creation	ontime5	8084.0006778538	Sum of GTIs [s]
revision	3	Processing version of data	ontime6	3040.0918849111	Sum of GTIs [s]
			ontime7	7574.2319700718	Sum of GTIs [s]
			ontime8	3189.9934311807	Sum of GTIs [s]
			ontime9	3001.1998734176	Sum of GTIs [s]
			l1events	1567837	Number of level 1 events

2.1.4 Events

	ccd 4	ccd 5	ccd 6	ccd 7	ccd 8	ccd 9		ccd 4	ccd 5	ccd 6	ccd 7	ccd 8	ccd 9
level 1 events	157763	427934	181504	434662	192603	173371	grade 0 events	76907	90437	87658	100511	93119	83378
rejected events	21845	55443	20879	38689	23481	21602		48%	21%	48%	23%	48%	48%
rejected %	13%	12%	11%	8%	12%	12%	grade 1 events	412	277	443	236	437	404
								0%	0%	0%	0%	0%	0%
							grade 2 events	23984	133453	27654	87652	29886	26975
								15%	31%	15%	20%	15%	15%
							grade 3 events	8312	23363	9814	40484	10671	9156
								5%	5%	5%	9%	5%	5%
							grade 4 events	8381	23069	10132	39741	10733	9345
								5%	5%	5%	9%	5%	5%
							grade 5 events	1378	10778	1661	7833	1831	1632
								0%	2%	0%	1%	0%	0%
							grade 6 events	18334	102301	25367	127585	24870	22915
								11%	23%	13%	29%	12%	13%
							grade 7 events	20055	44256	18775	30620	21056	19566
								12%	10%	10%	7%	10%	11%

2.2 Compared Parameters

Parameter	Planned	Actual	Parameter	Planned	Actual
Instrument	ACIS	ACIS	Obspar format version number	7	7
Detector	ACIS-456789	ACIS-456789	Obspar file type	PREDICTED	ACTUAL
Grating	NONE	NONE	Obspar update status	NONE	UPDATED
Data mode	FAINT	FAINT	On-chip summing requested	N	N
Observation mode	SECONDARY	SECONDARY	Subarray requested	NONE	NONE
[deg] Pointing RA	0	271.9781487478096	Alternating exposures requested	N	N
[deg] Pointing Dec	0	-13.98077508544179	[s] Primary exposure time	0.000000	3.2
[deg] Pointing Roll	0.0	104.9692955207021			
[mm] SIM focus pos	-0.684267	-0.6828225247311905			
[mm] SIM defocus	0	0.8505141146731063			
[mm] SIM translation stage pos	-190.132523	250.466033080201			
[mm] SIM translation stage offset	0	-0.01005468664627074			
[s] Observation start time (MET)	138244948.385	138244947.36079			
Observation start date	2002-05-20T01:22:28	2002-05-20T01:22:27			
[s] Observation end time (MET)	138266258.136	138266257.11166			
Observation end date	2002-05-20T07:17:38	2002-05-20T07:17:37			
Read mode	TIMED	TIMED			

2.3 Star Slots

2.4 FID Slots

A Summary

A.1 Status

V&V Scientist	Jen Lauer
V&V Date (YYYY-MM-DD)	2012.10.18
V&V Edition	1
V&V Disposition and Status	OK
V&V Charge Time	7.5742319700718

A.2 Comments