

V&V Reference Report

L2 ASCDS Version : 8.4.5

Observation 61186 - L2 Version 3
Chandra X-Ray Center

L2 Processing Date : Oct 8 2012

Contents

1	Front	2
2	OBI	3
2.1	OBI	3
2.1.1	Images	3
2.1.2	Bias	3
2.1.3	Parameters	4
2.1.4	Events	4
2.2	Compared Parameters	5
2.3	Star Slots	6
2.4	FID Slots	6
A	Summary	7
A.1	Status	7
A.2	Comments	7

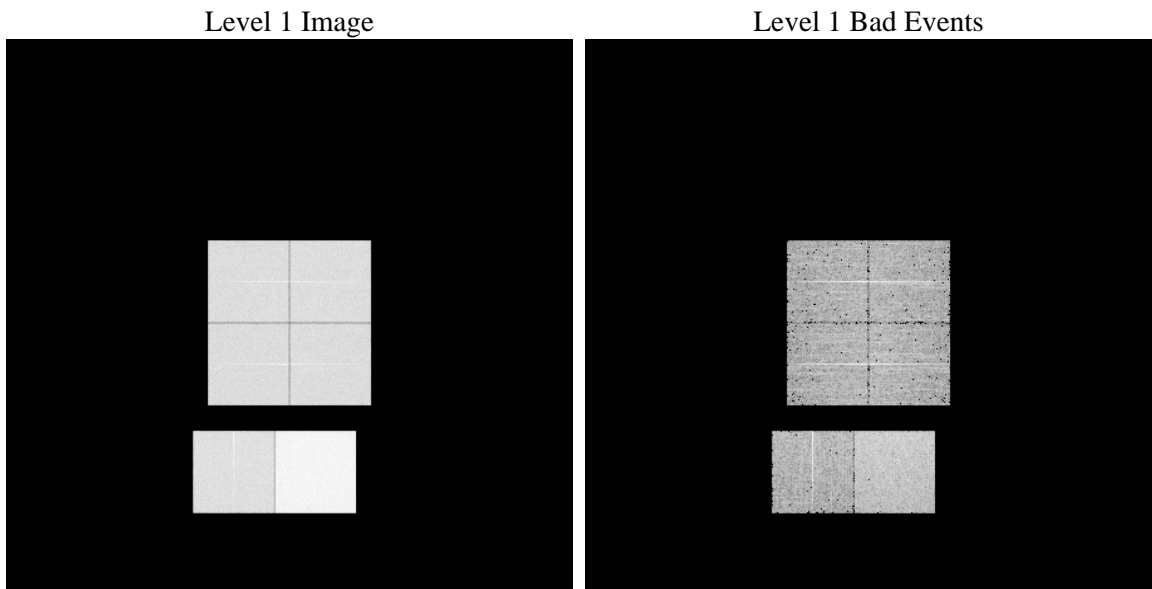
1 Front

seq_num	 	Sequence number
obs_id	61186	Observation id
title	ACIS-012367 diagnostics	Proposal title
observer	CHANDRA engineering request/realtime commanding	Principal investig
object	 	Source name
dtcycle	0	
cycle	P	events from which exps? Prim/Second/Both
ra_targ	0.0	Observer's specified target RA [deg]
dec_targ	0.0	Observer's specified target Dec [deg]
ra_nom	289.98182909461	Nominal RA [deg]
dec_nom	-29.976093572118	Nominal Dec [deg]
roll_nom	90.52761448852	Nominal Roll [deg]
revision	3	Processing version of data
ontime	8363.5033881366	Sum of GTIs [s]
livetime	8257.5996723389	Livetime [s]
ontime0	3694.7775895894	Sum of GTIs [s]
ontime1	3717.465138793	Sum of GTIs [s]
ontime2	3503.5586411655	Sum of GTIs [s]
ontime3	3535.9686826766	Sum of GTIs [s]
ontime6	3864.8642118275	Sum of GTIs [s]
ontime7	8363.5033881366	Sum of GTIs [s]
l2events	1312343	Number of level 2 events

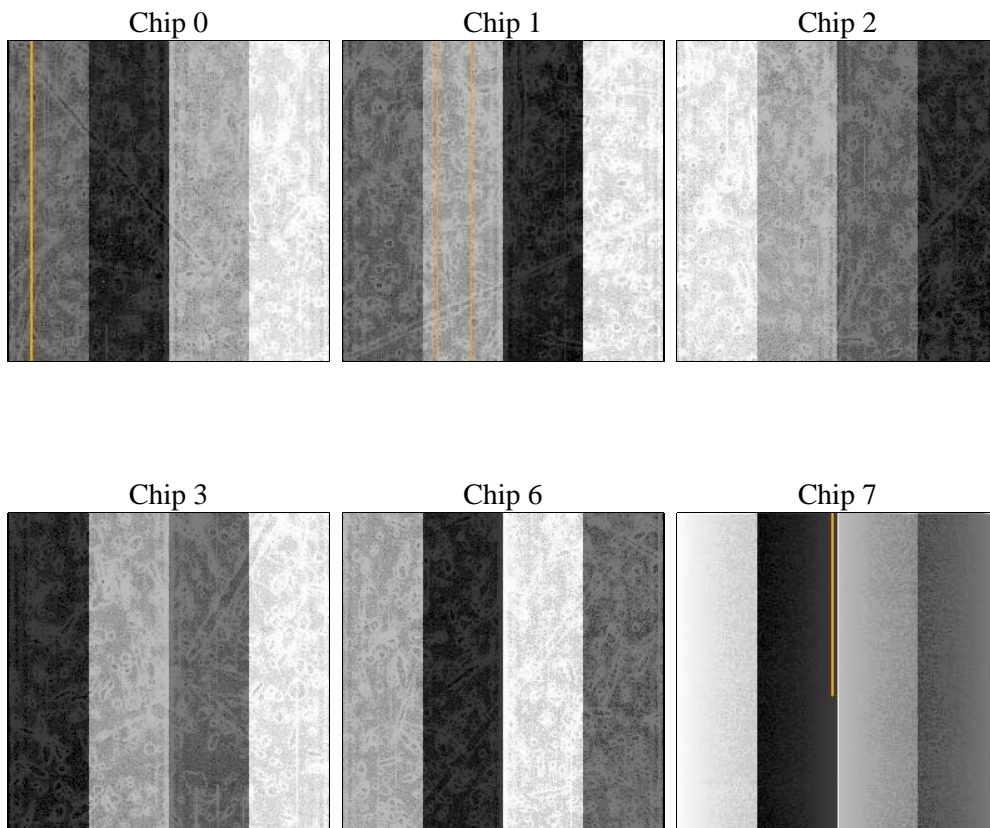
2 OBI

2.1 OBI

2.1.1 Images



2.1.2 Bias



2.1.3 Parameters

obi_num	0	Obi number	sched_exp_time	0.0	[s] Scheduled observation exposure time
ascdsver	8.4.5	Processing system revision	ontime	8363.5033881366	Sum of GTIs [s]
caldsver	4.5.2	 	ontime0	3694.7775895894	Sum of GTIs [s]
date	2012-10-08T09:31:27	Date and time of file creation	ontime1	3717.465138793	Sum of GTIs [s]
revision	3	Processing version of data	ontime2	3503.5586411655	Sum of GTIs [s]
			ontime3	3535.9686826766	Sum of GTIs [s]
			ontime6	3864.8642118275	Sum of GTIs [s]
			ontime7	8363.5033881366	Sum of GTIs [s]
			l1events	1558925	Number of level 1 events

2.1.4 Events

	ccd 0	ccd 1	ccd 2	ccd 3	ccd 6	ccd 7		ccd 0	ccd 1	ccd 2	ccd 3	ccd 6	ccd 7
level 1 events	211677	214778	205675	207794	232755	486246	grade 0 events	102964	104123	99977	101377	111671	112052
rejected events	26885	27695	27498	28513	29438	49717		48%	48%	48%	48%	47%	23%
rejected %	12%	12%	13%	13%	12%	10%	grade 1 events	529	522	498	551	587	299
								0%	0%	0%	0%	0%	0%
							grade 2 events	33274	33589	31649	31650	35790	97761
								15%	15%	15%	15%	15%	20%
							grade 3 events	11820	12127	11371	11423	12629	44943
								5%	5%	5%	5%	5%	9%
							grade 4 events	11634	12085	11354	11505	12701	44748
								5%	5%	5%	5%	5%	9%
							grade 5 events	1781	1867	1681	1799	2001	8849
								0%	0%	0%	0%	0%	1%
							grade 6 events	27345	27556	25977	25512	32750	142223
								12%	12%	12%	12%	14%	29%
							grade 7 events	22330	22909	23168	23977	24626	35371
								10%	10%	11%	11%	10%	7%

2.2 Compared Parameters

Parameter	Planned	Actual	Parameter	Planned	Actual
Instrument	ACIS	ACIS	Obspar format version number	7	7
Detector	ACIS-012367	ACIS-012367	Obspar file type	PREDICTED	ACTUAL
Grating	NONE	NONE	Obspar update status	NONE	UPDATED
Data mode	FAINT	FAINT	On-chip summing requested	N	N
Observation mode	SECONDARY	SECONDARY	Subarray requested	NONE	NONE
[deg] Pointing RA	0	289.981829094611	Alternating exposures requested	N	N
[deg] Pointing Dec	0	-29.97609357211817	[s] Primary exposure time	0.000000	3.2
[deg] Pointing Roll	0.0	90.52761448851989			
[mm] SIM focus pos	-0.782348	-0.6828225247311905			
[mm] SIM defocus	0	0.8505141146731063			
[mm] SIM translation stage pos	-233.592463	250.466033080201			
[mm] SIM translation stage offset	0	-0.01005468664627074			
[s] Observation start time (MET)	138472752.595	138472751.57009			
Observation start date	2002-05-22T16:39:13	2002-05-22T16:39:11			
[s] Observation end time (MET)	138495284.146	138495283.12101			
Observation end date	2002-05-22T22:54:44	2002-05-22T22:54:43			
Read mode	TIMED	TIMED			

2.3 Star Slots

2.4 FID Slots

A Summary

A.1 Status

V&V Scientist	Jen Lauer
V&V Date (YYYY-MM-DD)	2012.10.18
V&V Edition	1
V&V Disposition and Status	OK
V&V Charge Time	8.3635033881366

A.2 Comments