

# V&V Reference Report

## L2 ASCDS Version : 7.6.9

Observation 61183 - L2 Version 001  
Chandra X-Ray Center

L2 Processing Date : Sep 17 2006

## Contents

<b>1</b>	<b>Front</b>	<b>2</b>
<b>2</b>	<b>OBI</b>	<b>3</b>
2.1	OBI . . . . .	3
2.1.1	Images . . . . .	3
2.1.2	Bias . . . . .	3
2.1.3	Parameters . . . . .	4
2.1.4	Events . . . . .	4
2.2	Compared Parameters . . . . .	5
2.3	Aspect . . . . .	6
2.4	Star Slots . . . . .	8
2.5	FID Slots . . . . .	8
<b>A</b>	<b>Summary</b>	<b>9</b>
A.1	Status . . . . .	9
A.2	Comments . . . . .	9

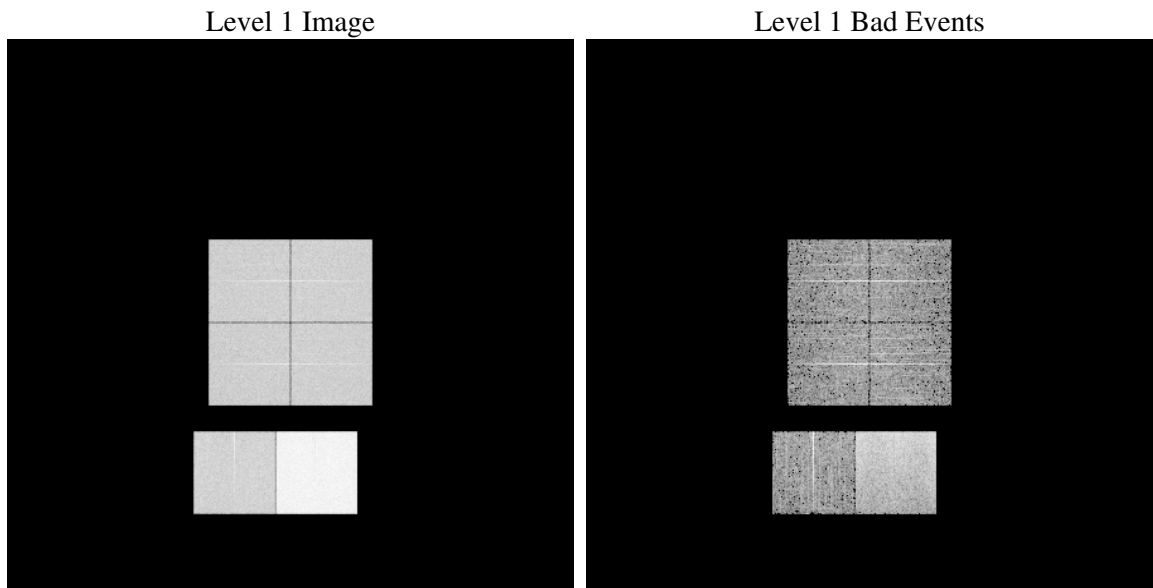
# 1 Front

seq_num	&#160
obs_id	61183
title	ACIS-012367 diagnostics
observer	CHANDRA engineering request/realtime commanding
object	&#160
dtcycle	0
cycle	P
ra_targ	0.0
dec_targ	0.0
ra_nom	351.97528464762
dec_nom	-11.484760279832
roll_nom	115.01983941897
revision	2
ontime	7784.618807286
livetime	7686.0452766135
ontime0	3036.6235867143
ontime1	3098.243599236
ontime2	2910.3059732318
ontime3	2942.551625669
ontime6	3108.0493772924
ontime7	7784.618807286
l2events	1216040

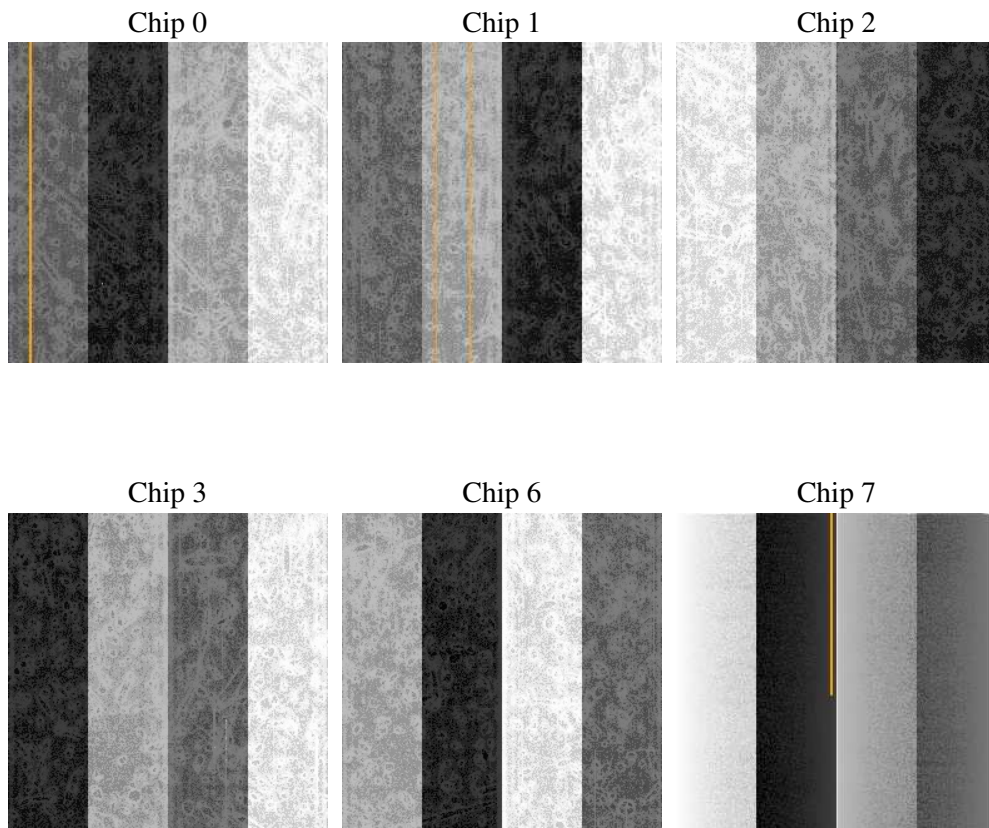
## 2 OBI

### 2.1 OBI

#### 2.1.1 Images



#### 2.1.2 Bias



### 2.1.3 Parameters

obi_num	1
ascdsver	7.6.9
caldbver	3.2.3
date	2006-09-17T23:03:30
revision	2

sched_exp_time	0.0
ontime	7784.8871970177
ontime0	3036.8509364426
ontime1	3098.4299089611
ontime2	2910.4512429535
ontime3	2942.8610554039
ontime6	3108.1536070406
ontime7	7784.8871970177
l1events	1451245

### 2.1.4 Events

	ccd 0	ccd 1	ccd 2	ccd 3	ccd 6	ccd 7
level 1 events	190147	194547	183473	188829	206679	487570
rejected events	23803	23360	23767	25330	26480	60868
rejected %	12%	12%	12%	13%	12%	12%

	ccd 0	ccd 1	ccd 2	ccd 3	ccd 6	ccd 7
grade 0 events	90375	92701	87633	89587	96434	75406
	47%	47%	47%	47%	46%	15%
grade 1 events	497	503	516	523	589	162
	0%	0%	0%	0%	0%	0%
grade 2 events	29059	30263	28154	28794	30719	132134
	15%	15%	15%	15%	14%	27%
grade 3 events	10494	10761	9977	10413	11032	29930
	5%	5%	5%	5%	5%	6%
grade 4 events	10579	10893	9987	10330	10970	29282
	5%	5%	5%	5%	5%	6%
grade 5 events	1619	1632	1521	1646	1853	7642
	0%	0%	0%	0%	0%	1%
grade 6 events	25837	26569	23955	24375	31044	159950
	13%	13%	13%	12%	15%	32%
grade 7 events	21687	21225	21730	23161	24038	53064
	11%	10%	11%	12%	11%	10%

## 2.2 Compared Parameters

Parameter	Planned	Actual	Parameter	Planned	Actual
Instrument	ACIS	ACIS	Obspar format version number	6	6
Detector	ACIS-012367	ACIS-012367	Obspar file type	PREDICTED	ACTUAL
Grating	NONE	NONE	Obspar update status	NONE	UPDATED
Data mode	FAINT	FAINT	On-chip summing requested	N	N
Observation mode	SECONDARY	SECONDARY	Subarray requested	NONE	NONE
Pointing RA	0	351.9752846476202	Alternating exposures requested	N	N
Pointing Dec	0	-11.48476027983179	Primary exposure time	3.2	3.2
Pointing Roll	0.0	115.0198394189737			
SIM focus pos (mm)	-0.782348	-0.7809083437167272			
SIM defocus (mm)	0	0.7524282956875696			
SIM translation stage pos (mm)	-233.592463	250.466033080201			
SIM translation stage offset (mm)	0	-0.01005468664627074			
Observation start time	138898055.862186	138898054.83744			
Observation start date	2002-05-27T14:47:36	2002-05-27T14:47:34			
Observation end time	138909642.462659	138909641.43791			
Observation end date	2002-05-27T18:00:42	2002-05-27T18:00:41			
Read mode	TIMED	TIMED			

## 2.3 Aspect



## **2.4 Star Slots**

## **2.5 FID Slots**



## A Summary

### A.1 Status

V&V Scientist	Jen Lauer
V&V Date (YYYY-MM-DD)	2006.09.18
V&V Edition	1
V&V Disposition and Status	OK
V&V Charge Time	7.7846188

### A.2 Comments