

V&V Reference Report

L2 ASCDS Version : 8.4.5

Observation 61165 - L2 Version 3
Chandra X-Ray Center

L2 Processing Date : Oct 9 2012

Contents

1	Front	2
2	OBI	3
2.1	OBI	3
2.1.1	Images	3
2.1.2	Bias	3
2.1.3	Parameters	4
2.1.4	Events	4
2.2	Compared Parameters	5
2.3	Star Slots	6
2.4	FID Slots	6
A	Summary	7
A.1	Status	7
A.2	Comments	7

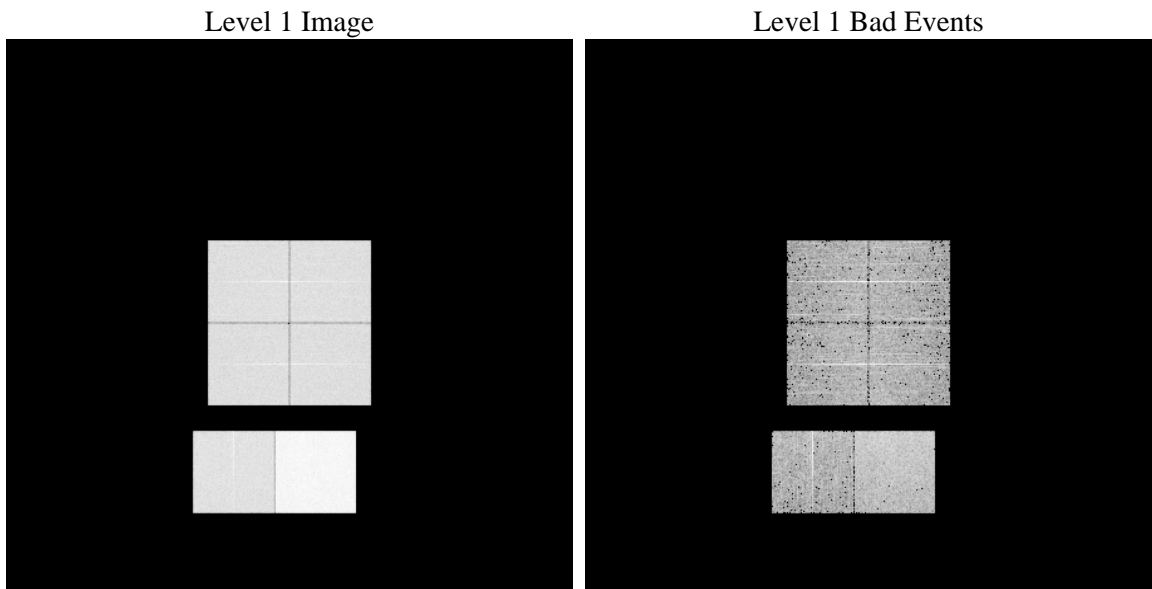
1 Front

seq_num	 	Sequence number
obs_id	61165	Observation id
title	ACIS-012367 diagnostics	Proposal title
observer	CHANDRA engineering request/realtime commanding	Principal investig
object	 	Source name
dtcycle	0	
cycle	P	events from which exps? Prim/Second/Both
ra_targ	0.0	Observer's specified target RA [deg]
dec_targ	0.0	Observer's specified target Dec [deg]
ra_nom	152.00227919174	Nominal RA [deg]
dec_nom	-14.028522010205	Nominal Dec [deg]
roll_nom	241.6018237644	Nominal Roll [deg]
revision	3	Processing version of data
ontime	7797.8449288905	Sum of GTIs [s]
livetime	7699.1039211023	Livetime [s]
ontime0	3510.0384277701	Sum of GTIs [s]
ontime1	3493.7506724	Sum of GTIs [s]
ontime2	3357.587986052	Sum of GTIs [s]
ontime3	3322.0593644679	Sum of GTIs [s]
ontime6	3652.6424235404	Sum of GTIs [s]
ontime7	7797.8449288905	Sum of GTIs [s]
l2events	1218857	Number of level 2 events

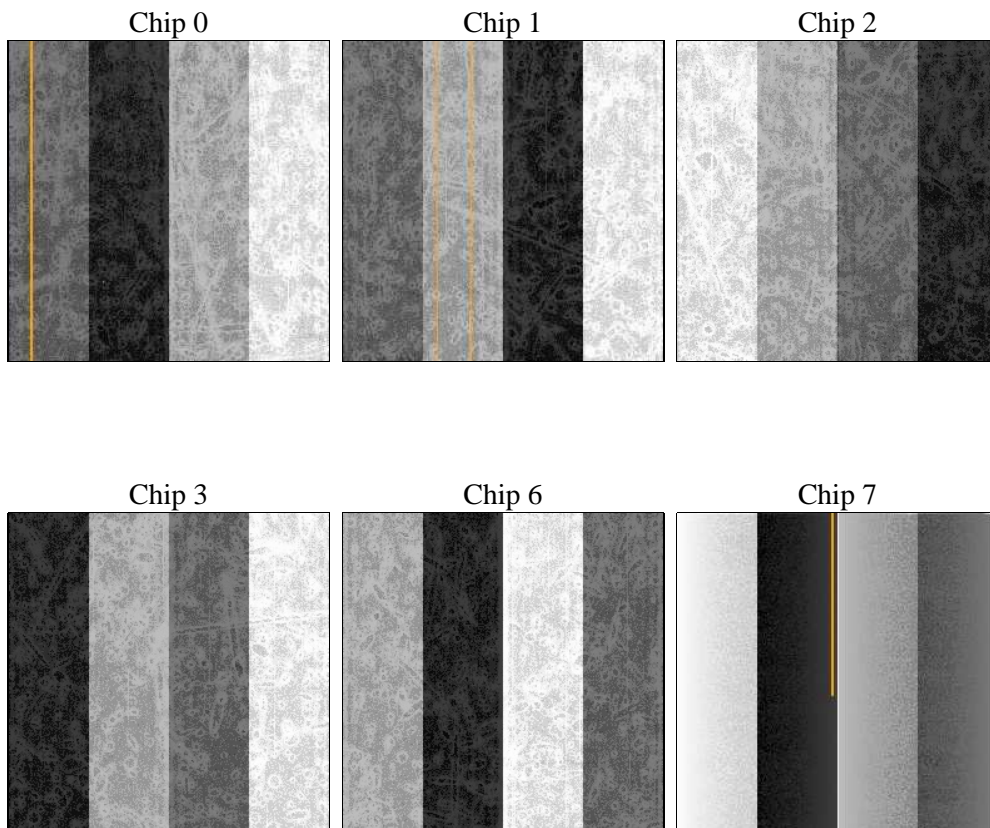
2 OBI

2.1 OBI

2.1.1 Images



2.1.2 Bias



2.1.3 Parameters

obi_num	0	Obi number	sched_exp_time	0.0	[s] Scheduled observation exposure time
ascdsver	8.4.5	Processing system revision	ontime	7797.8449288905	Sum of GTIs [s]
caldsver	4.5.2	 	ontime0	3510.0384277701	Sum of GTIs [s]
date	2012-10-09T08:02:45	Date and time of file creation	ontime1	3493.7506724	Sum of GTIs [s]
revision	3	Processing version of data	ontime2	3357.587986052	Sum of GTIs [s]
			ontime3	3322.0593644679	Sum of GTIs [s]
			ontime6	3652.6424235404	Sum of GTIs [s]
			ontime7	7797.8449288905	Sum of GTIs [s]
			l1events	1438014	Number of level 1 events

2.1.4 Events

	ccd 0	ccd 1	ccd 2	ccd 3	ccd 6	ccd 7		ccd 0	ccd 1	ccd 2	ccd 3	ccd 6	ccd 7
level 1 events	197244	197195	190859	191167	216410	445139	grade 0 events	95333	95543	92379	92668	103835	101756
rejected events	24337	24358	24321	25178	26500	41913		48%	48%	48%	48%	47%	22%
rejected %	12%	12%	12%	13%	12%	9%	grade 1 events	479	419	485	498	497	290
								0%	0%	0%	0%	0%	0%
							grade 2 events	30675	30207	29351	29019	32508	88894
								15%	15%	15%	15%	15%	19%
							grade 3 events	10905	11195	10417	10654	11695	40896
								5%	5%	5%	5%	5%	9%
							grade 4 events	11010	10899	10381	10651	11881	41001
								5%	5%	5%	5%	5%	9%
							grade 5 events	1690	1707	1618	1697	1997	8441
								0%	0%	0%	0%	0%	1%
							grade 6 events	24984	24993	24010	22997	29991	130679
								12%	12%	12%	12%	13%	29%
							grade 7 events	22168	22232	22218	22983	24006	33182
								11%	11%	11%	12%	11%	7%

2.2 Compared Parameters

Parameter	Planned	Actual
Instrument	ACIS	ACIS
Detector	ACIS-012367	ACIS-012367
Grating	NONE	NONE
Data mode	FAINT	FAINT
Observation mode	SECONDARY	SECONDARY
[deg] Pointing RA	0	152.0022791917394
[deg] Pointing Dec	0	-14.02852201020526
[deg] Pointing Roll	0.0	241.6018237643975
[mm] SIM focus pos	-0.782348	-0.7809083437167272
[mm] SIM defocus	0	0.7524282956875696
[mm] SIM translation stage pos	-233.592463	250.466033080201
[mm] SIM translation stage offset	0	-0.01005468664627074
[s] Observation start time (MET)	140493640.627377	140493639.60264
Observation start date	2002-06-15T02:00:41	2002-06-15T02:00:39
[s] Observation end time (MET)	140531992.028949	140531991.00421
Observation end date	2002-06-15T12:39:52	2002-06-15T12:39:51
Read mode	TIMED	TIMED

Parameter	Planned	Actual
Obspar format version number	7	7
Obspar file type	PREDICTED	ACTUAL
Obspar update status	NONE	UPDATED
On-chip summing requested	N	N
Subarray requested	NONE	NONE
Alternating exposures requested	N	N
[s] Primary exposure time	3.2	3.2

2.3 Star Slots

2.4 FID Slots

A Summary

A.1 Status

V&V Scientist	Beth Sundheim
V&V Date (YYYY-MM-DD)	2012.10.19
V&V Edition	1
V&V Disposition and Status	OK
V&V Charge Time	7.7978449288905

A.2 Comments