

V&V Reference Report

L2 ASCDS Version : 8.4.5

Observation 61133 - L2 Version 3
Chandra X-Ray Center

L2 Processing Date : Oct 11 2012

Contents

1	Front	2
2	OBI	3
2.1	OBI	3
2.1.1	Images	3
2.1.2	Bias	3
2.1.3	Parameters	4
2.1.4	Events	4
2.2	Compared Parameters	5
2.3	Star Slots	6
2.4	FID Slots	6
A	Summary	7
A.1	Status	7
A.2	Comments	7

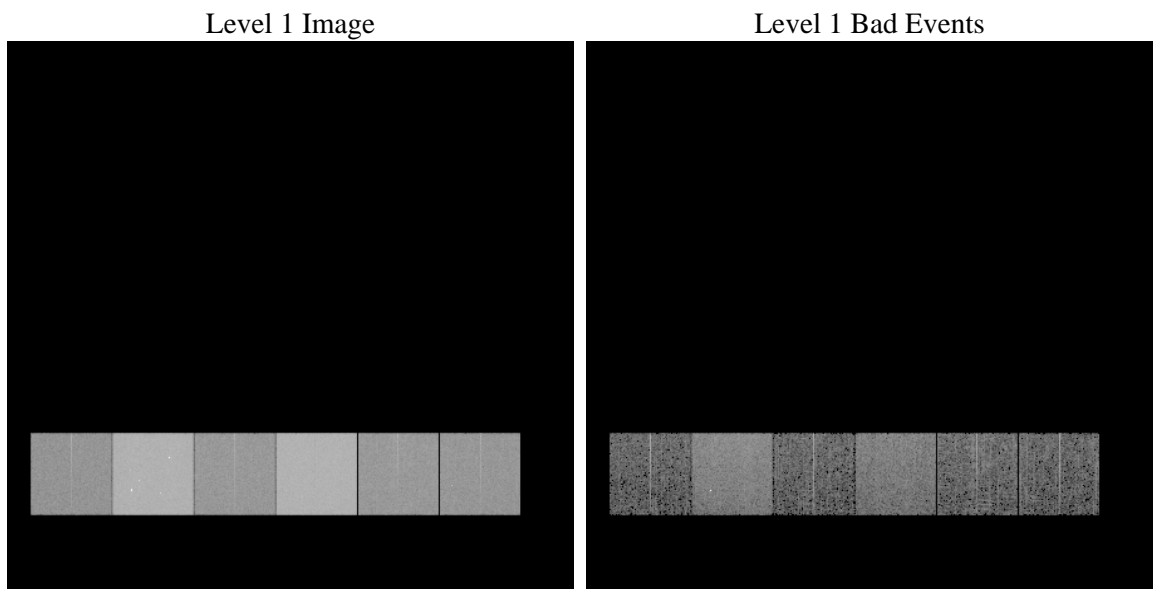
1 Front

seq_num	 	Sequence number
obs_id	61133	Observation id
title	ACIS-456789 diagnostics	Proposal title
observer	CHANDRA engineering request/realtime commanding	Principal investig
object	 	Source name
dtcycle	0	
cycle	P	events from which exps? Prim/Second/Both
ra_targ	0.0	Observer's specified target RA [deg]
dec_targ	0.0	Observer's specified target Dec [deg]
ra_nom	345.97146527311	Nominal RA [deg]
dec_nom	22.311010134342	Nominal Dec [deg]
roll_nom	124.52074917431	Nominal Roll [deg]
revision	3	Processing version of data
ontime	7174.7138459384	Sum of GTIs [s]
livetime	7083.8632991272	Livetime [s]
ontime4	2588.5967915952	Sum of GTIs [s]
ontime5	7670.53992787	Sum of GTIs [s]
ontime6	2800.2550546527	Sum of GTIs [s]
ontime7	7174.7138459384	Sum of GTIs [s]
ontime8	2821.9100629687	Sum of GTIs [s]
ontime9	2709.5062538385	Sum of GTIs [s]
l2events	1213654	Number of level 2 events

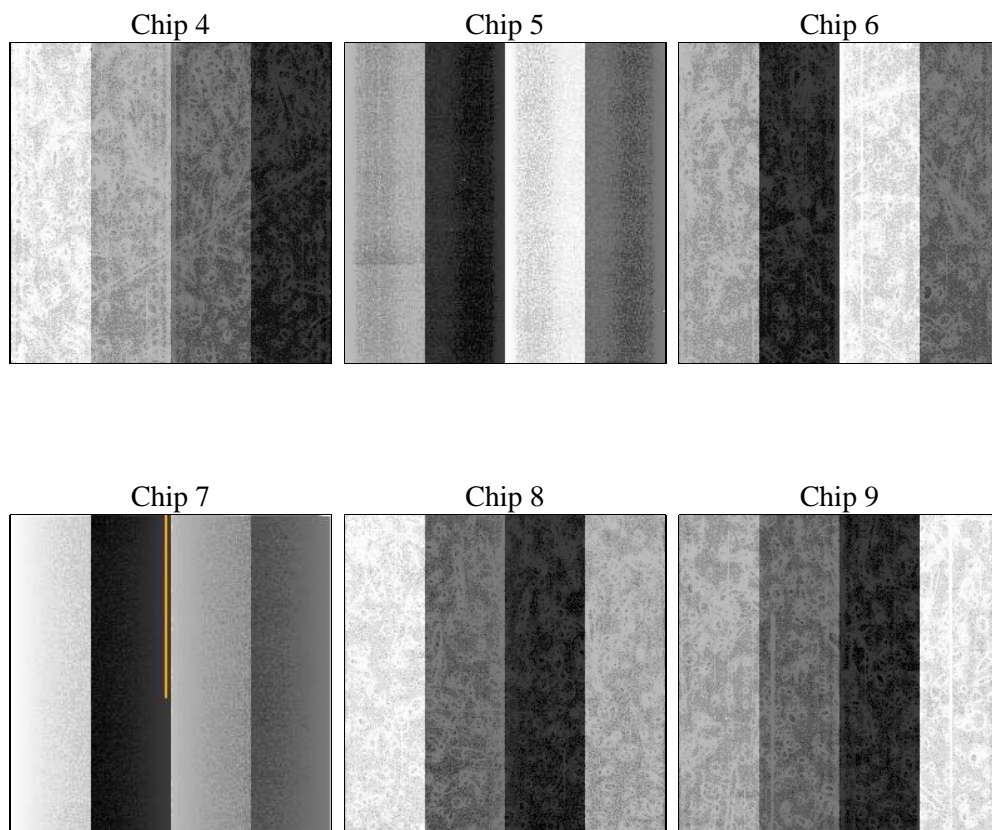
2 OBI

2.1 OBI

2.1.1 Images



2.1.2 Bias



2.1.3 Parameters

obi_num	0	Obi number	sched_exp_time	0.0	[s] Scheduled observation exposure time
ascdsver	8.4.5	Processing system revision	ontime	7174.7138459384	Sum of GTIs [s]
caldbver	4.5.2	 	ontime4	2588.5967915952	Sum of GTIs [s]
date	2012-10-11T18:49:35	Date and time of file creation	ontime5	7670.53992787	Sum of GTIs [s]
revision	3	Processing version of data	ontime6	2800.2550546527	Sum of GTIs [s]
			ontime7	7174.7138459384	Sum of GTIs [s]
			ontime8	2821.9100629687	Sum of GTIs [s]
			ontime9	2709.5062538385	Sum of GTIs [s]
			l1events	1446011	Number of level 1 events

2.1.4 Events

	ccd 4	ccd 5	ccd 6	ccd 7	ccd 8	ccd 9		ccd 4	ccd 5	ccd 6	ccd 7	ccd 8	ccd 9
level 1 events	143168	401697	166364	408540	170455	155787	grade 0 events	69272	84011	78945	94457	80356	74289
rejected events	20444	53517	21302	39011	24033	20780		48%	20%	47%	23%	47%	47%
rejected %	14%	13%	12%	9%	14%	13%	grade 1 events	368	263	419	272	408	387
								0%	0%	0%	0%	0%	0%
							grade 2 events	21783	124234	25141	81556	25517	23743
								15%	30%	15%	19%	14%	15%
							grade 3 events	7406	21819	9013	37396	9162	8339
								5%	5%	5%	9%	5%	5%
							grade 4 events	7448	21953	8944	37031	9329	8335
								5%	5%	5%	9%	5%	5%
							grade 5 events	1303	9589	1545	7775	1648	1495
								0%	2%	0%	1%	0%	0%
							grade 6 events	16815	96163	23019	119089	22058	20301
								11%	23%	13%	29%	12%	13%
							grade 7 events	18773	43665	19338	30964	21977	18898
								13%	10%	11%	7%	12%	12%

2.2 Compared Parameters

Parameter	Planned	Actual	Parameter	Planned	Actual
Instrument	ACIS	ACIS	Obspar format version number	7	7
Detector	ACIS-456789	ACIS-456789	Obspar file type	PREDICTED	ACTUAL
Grating	NONE	NONE	Obspar update status	NONE	UPDATED
Data mode	FAINT	FAINT	On-chip summing requested	N	N
Observation mode	SECONDARY	SECONDARY	Subarray requested	NONE	NONE
[deg] Pointing RA	0	345.9714652731059	Alternating exposures requested	N	N
[deg] Pointing Dec	0	22.31101013434221	[s] Primary exposure time	3.2	3.2
[deg] Pointing Roll	0.0	124.5207491743148			
[mm] SIM focus pos	-0.684267	-0.7809083437167272			
[mm] SIM defocus	0	0.7524282956875696			
[mm] SIM translation stage pos	-190.132523	250.466033080201			
[mm] SIM translation stage offset	0	-0.01005468664627074			
[s] Observation start time (MET)	142551754.611695	142551753.58698			
Observation start date	2002-07-08T21:42:35	2002-07-08T21:42:33			
[s] Observation end time (MET)	142589624.263248	142589623.23854			
Observation end date	2002-07-09T08:13:44	2002-07-09T08:13:43			
Read mode	TIMED	TIMED			

2.3 Star Slots

2.4 FID Slots

A Summary

A.1 Status

V&V Scientist	Beth Sundheim
V&V Date (YYYY-MM-DD)	2012.10.21
V&V Edition	1
V&V Disposition and Status	OK
V&V Charge Time	7.1747138459384

A.2 Comments