

# V&V Reference Report

## L2 ASCDS Version : 8.4.5

Observation 61089 - L2 Version 3  
Chandra X-Ray Center

L2 Processing Date : Oct 13 2012

## Contents

<b>1</b>	<b>Front</b>	<b>2</b>
<b>2</b>	<b>OBI</b>	<b>3</b>
2.1	OBI . . . . .	3
2.1.1	Images . . . . .	3
2.1.2	Bias . . . . .	3
2.1.3	Parameters . . . . .	4
2.1.4	Events . . . . .	4
2.2	Compared Parameters . . . . .	5
2.3	Star Slots . . . . .	6
2.4	FID Slots . . . . .	6
<b>A</b>	<b>Summary</b>	<b>7</b>
A.1	Status . . . . .	7
A.2	Comments . . . . .	7

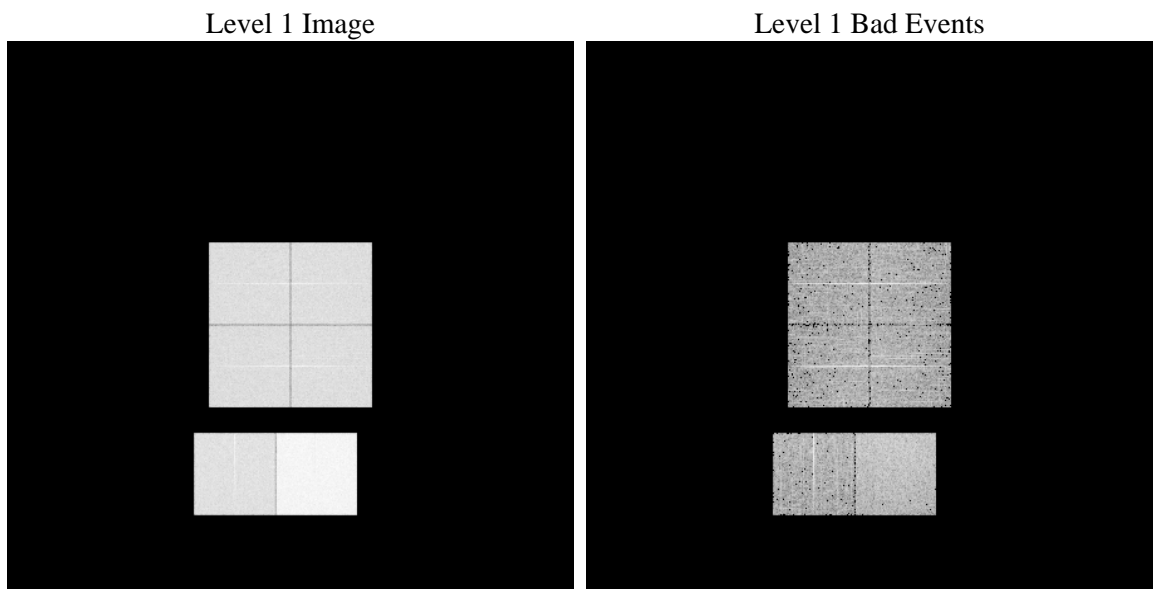
# 1 Front

seq_num	&#160	Sequence number
obs_id	61089	Observation id
title	ACIS-012367 diagnostics	Proposal title
observer	CHANDRA engineering request/realtime commanding	Principal investig
object	&#160	Source name
dtcycle	0	&#160
cycle	P	events from which exps? Prim/Second/Both
ra_targ	0.0	Observer's specified target RA [deg]
dec_targ	0.0	Observer's specified target Dec [deg]
ra_nom	217.83039592232	Nominal RA [deg]
dec_nom	-42.293856515875	Nominal Dec [deg]
roll_nom	249.63527032086	Nominal Roll [deg]
revision	3	Processing version of data
ontime	7791.9999709725	Sum of GTIs [s]
livetime	7693.332975561	Livetime [s]
ontime0	3520.3978408575	Sum of GTIs [s]
ontime1	3572.2536434829	Sum of GTIs [s]
ontime2	3380.0468614101	Sum of GTIs [s]
ontime3	3458.818878144	Sum of GTIs [s]
ontime6	3737.5458659232	Sum of GTIs [s]
ontime7	7791.9999709725	Sum of GTIs [s]
l2events	1216432	Number of level 2 events

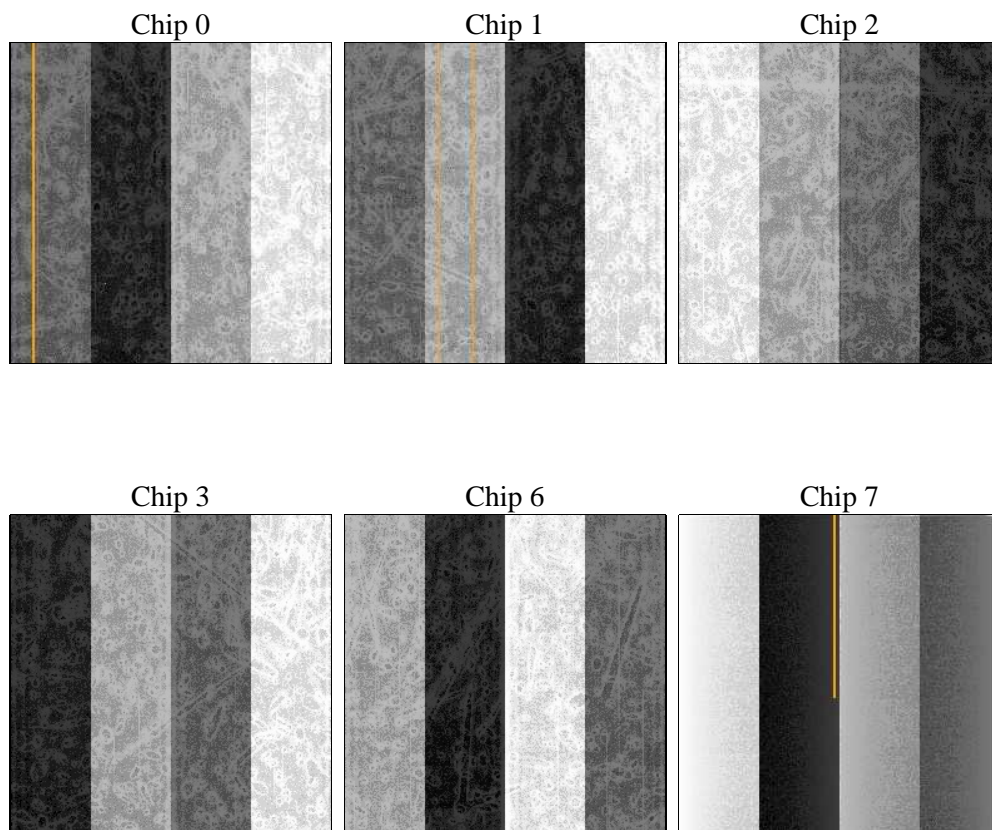
## 2 OBI

### 2.1 OBI

#### 2.1.1 Images



#### 2.1.2 Bias



### 2.1.3 Parameters

obi_num	0	Obi number	sched_exp_time	0.0	[s] Scheduled observation exposure time
ascdsver	8.4.5	Processing system revision	ontime	7791.9999709725	Sum of GTIs [s]
caldbver	4.5.2	&#160	ontime0	3520.3978408575	Sum of GTIs [s]
date	2012-10-13T23:40:25	Date and time of file creation	ontime1	3572.2536434829	Sum of GTIs [s]
revision	3	Processing version of data	ontime2	3380.0468614101	Sum of GTIs [s]
			ontime3	3458.818878144	Sum of GTIs [s]
			ontime6	3737.5458659232	Sum of GTIs [s]
			ontime7	7791.9999709725	Sum of GTIs [s]
			l1events	1438071	Number of level 1 events

### 2.1.4 Events

	ccd 0	ccd 1	ccd 2	ccd 3	ccd 6	ccd 7		ccd 0	ccd 1	ccd 2	ccd 3	ccd 6	ccd 7
level 1 events	194886	198090	190909	196628	219251	438307	grade 0 events	94415	95341	93121	95744	104584	100883
rejected events	24040	24856	25166	26243	27155	41590		48%	48%	48%	48%	47%	23%
rejected %	12%	12%	13%	13%	12%	9%	grade 1 events	529	507	585	608	522	265
								0%	0%	0%	0%	0%	0%
							grade 2 events	29601	30523	27975	29266	33000	88218
								15%	15%	14%	14%	15%	20%
							grade 3 events	11195	11131	10581	11012	11966	40178
								5%	5%	5%	5%	5%	9%
							grade 4 events	10865	10905	10647	11079	11961	39499
								5%	5%	5%	5%	5%	9%
							grade 5 events	1717	1772	1624	1805	1990	8091
								0%	0%	0%	0%	0%	1%
							grade 6 events	24925	25503	23419	23452	30752	128106
								12%	12%	12%	11%	14%	29%
							grade 7 events	21639	22408	22957	23662	24476	33067
								11%	11%	12%	12%	11%	7%

## 2.2 Compared Parameters

Parameter	Planned	Actual	Parameter	Planned	Actual
Instrument	ACIS	ACIS	Obspar format version number	7	7
Detector	ACIS-012367	ACIS-012367	Obspar file type	PREDICTED	ACTUAL
Grating	NONE	NONE	Obspar update status	NONE	UPDATED
Data mode	FAINT	FAINT	On-chip summing requested	N	N
Observation mode	SECONDARY	SECONDARY	Subarray requested	NONE	NONE
[deg] Pointing RA	0	217.8303959223189	Alternating exposures requested	N	N
[deg] Pointing Dec	0	-42.29385651587501	[s] Primary exposure time	0.000000	3.2
[deg] Pointing Roll	0.0	249.6352703208626			
[mm] SIM focus pos	-0.782348	-0.7809083437167272			
[mm] SIM defocus	0	0.7524282956875696			
[mm] SIM translation stage pos	-233.592463	250.466033080201			
[mm] SIM translation stage offset	0	-0.01005468664627074			
[s] Observation start time (MET)	145521265.833791	145521264.80908			
Observation start date	2002-08-12T06:34:26	2002-08-12T06:34:24			
[s] Observation end time (MET)	145531841.784226	145531840.75951			
Observation end date	2002-08-12T09:30:42	2002-08-12T09:30:40			
Read mode	TIMED	TIMED			

## 2.3 Star Slots

## 2.4 FID Slots

## **A Summary**

### **A.1 Status**

V&V Scientist	Jen Lauer
V&V Date (YYYY-MM-DD)	2012.10.23
V&V Edition	1
V&V Disposition and Status	OK
V&V Charge Time	7.7919999709725

### **A.2 Comments**