

V&V Reference Report

L2 ASCDS Version : 7.6.9

Observation 61083 - L2 Version 001
Chandra X-Ray Center

L2 Processing Date : Sep 30 2006

Contents

1	Front	2
2	OBI	3
2.1	OBI	3
2.1.1	Images	3
2.1.2	Bias	3
2.1.3	Parameters	4
2.1.4	Events	4
2.2	Compared Parameters	5
2.3	Aspect	6
2.4	Star Slots	8
2.5	FID Slots	8
A	Summary	9
A.1	Status	9
A.2	Comments	9

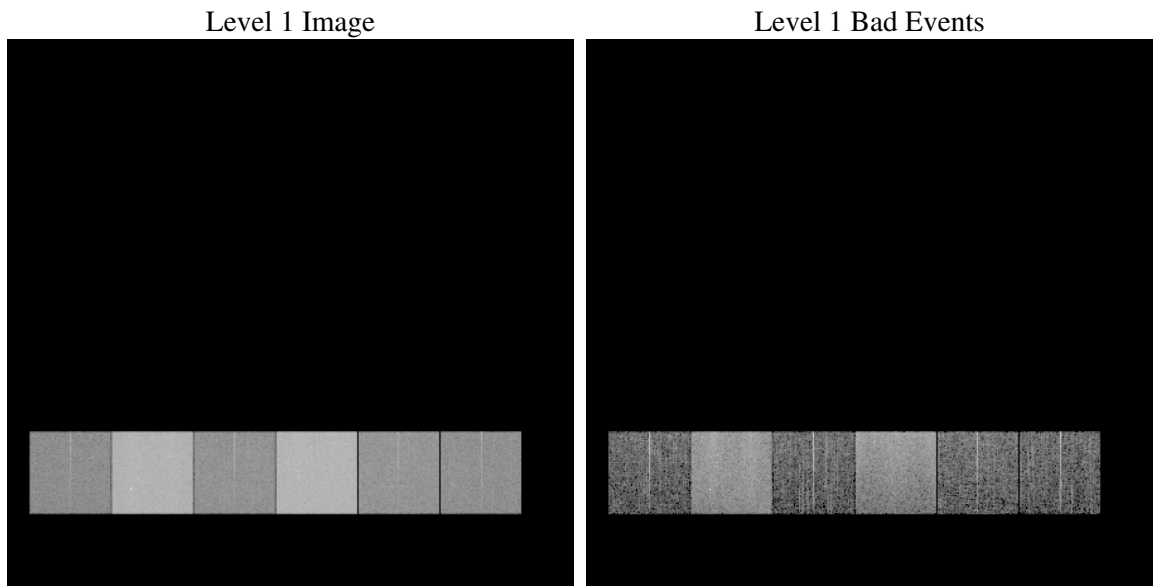
1 Front

seq_num	
obs_id	61083
title	ACIS-456789 diagnostics
observer	CHANDRA engineering request/realtime commanding
object	
dtcycle	0
cycle	P
ra_targ	0.0
dec_targ	0.0
ra_nom	344.47037884141
dec_nom	15.000979686565
roll_nom	145.16811940307
revision	2
ontime	8107.4809789956
livetime	8004.8191731006
ontime4	2870.1711235642
ontime5	8457.5463089943
ontime6	3148.8586660624
ontime7	8107.4809789956
ontime8	3278.5119092464
ontime9	3019.0945143104
l2events	1271178

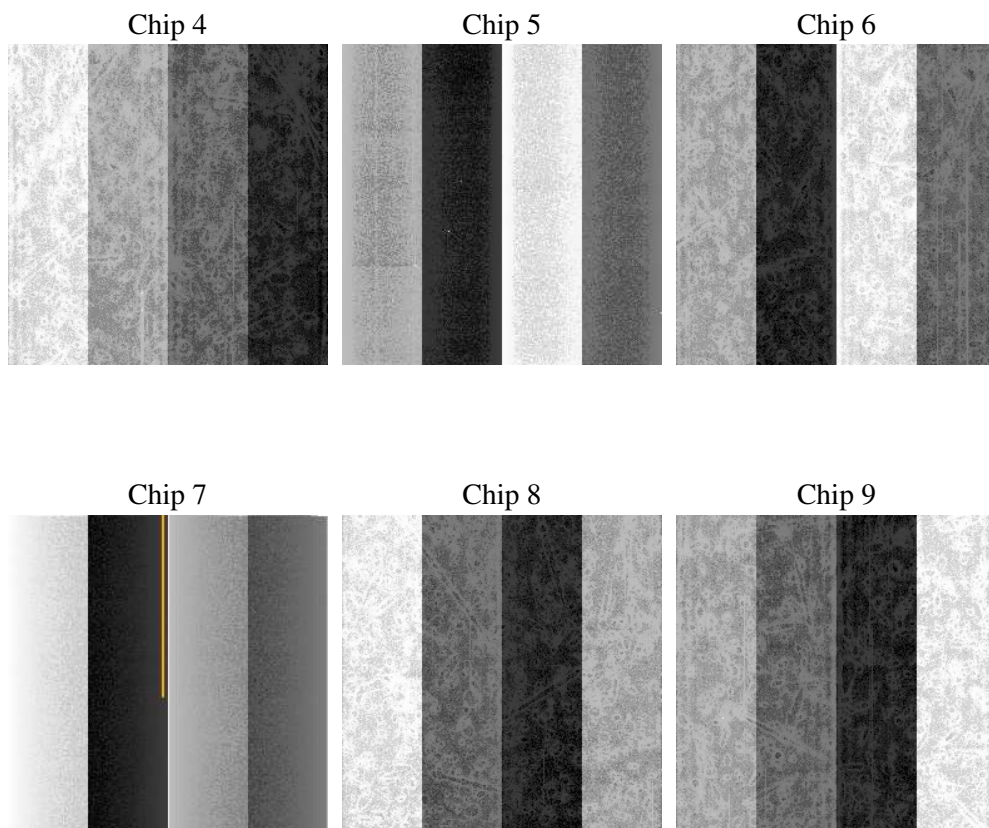
2 OBI

2.1 OBI

2.1.1 Images



2.1.2 Bias



2.1.3 Parameters

obi_num	1
ascdsver	7.6.9
caldsver	3.2.3
date	2006-09-30T17:37:37
revision	2

sched_exp_time	0.0
ontime	8108.9914984703
ontime4	2871.5585230291
ontime5	8459.0157884657
ontime6	3150.2871055305
ontime7	8108.9914984703
ontime8	3279.9277292192
ontime9	3020.6460737884
l1events	1555491

2.1.4 Events

	ccd 4	ccd 5	ccd 6	ccd 7	ccd 8	ccd 9
level 1 events	153750	422181	178850	444449	190000	166261
rejected events	23271	72199	24227	60659	25916	23067
rejected %	15%	17%	13%	13%	13%	13%

	ccd 4	ccd 5	ccd 6	ccd 7	ccd 8	ccd 9
grade 0 events	77355	33619	83814	65985	91214	79479
	50%	7%	46%	14%	48%	47%
grade 1 events	557	125	385	134	451	458
	0%	0%	0%	0%	0%	0%
grade 2 events	19495	169226	27420	119175	28168	23907
	12%	40%	15%	26%	14%	14%
grade 3 events	8523	10680	9118	27306	10517	9095
	5%	2%	5%	6%	5%	5%
grade 4 events	8654	9865	9483	26305	10383	9225
	5%	2%	5%	5%	5%	5%
grade 5 events	1488	7484	1687	7568	1939	1681
	0%	1%	0%	1%	1%	1%
grade 6 events	16452	126592	24788	145019	23802	21488
	10%	29%	13%	32%	12%	12%
grade 7 events	21226	64590	22155	52957	23526	20928
	13%	15%	12%	11%	12%	12%

2.2 Compared Parameters

Parameter	Planned	Actual	Parameter	Planned	Actual
Instrument	ACIS	ACIS	Obspar format version number	6	6
Detector	ACIS-456789	ACIS-456789	Obspar file type	PREDICTED	ACTUAL
Grating	NONE	NONE	Obspar update status	NONE	UPDATED
Data mode	FAINT	FAINT	On-chip summing requested	N	N
Observation mode	SECONDARY	SECONDARY	Subarray requested	NONE	NONE
Pointing RA	0	344.4703788414108	Alternating exposures requested	N	N
Pointing Dec	0	15.00097968656523	Primary exposure time	0.000000	3.2
Pointing Roll	0.0	145.1681194030737			
SIM focus pos (mm)	-0.684267	-0.6828225247311905			
SIM defocus (mm)	0	0.8505141146731063			
SIM translation stage pos (mm)	-190.132523	250.466033080201			
SIM translation stage offset (mm)	0	-0.01005468664627074			
Observation start time	145786232.444711	145786231.41999			
Observation start date	2002-08-15T08:10:32	2002-08-15T08:10:31			
Observation end time	145808848.045644	145808847.02092			
Observation end date	2002-08-15T14:27:28	2002-08-15T14:27:27			
Read mode	TIMED	TIMED			

2.3 Aspect

2.4 Star Slots

2.5 FID Slots

A Summary

A.1 Status

V&V Scientist	Jen Lauer
V&V Date (YYYY-MM-DD)	2006.10.02
V&V Edition	1
V&V Disposition and Status	OK
V&V Charge Time	8.10748097

A.2 Comments

The ACIS focal plane temperature was above calibration limits for the entire observation.