

V&V Reference Report

L2 ASCDS Version : 8.4.5

Observation 61058 - L2 Version 3
Chandra X-Ray Center

L2 Processing Date : Oct 14 2012

Contents

1	Front	2
2	OBI	3
2.1	OBI	3
2.1.1	Images	3
2.1.2	Bias	3
2.1.3	Parameters	4
2.1.4	Events	4
2.2	Compared Parameters	5
2.3	Star Slots	6
2.4	FID Slots	6
A	Summary	7
A.1	Status	7
A.2	Comments	7

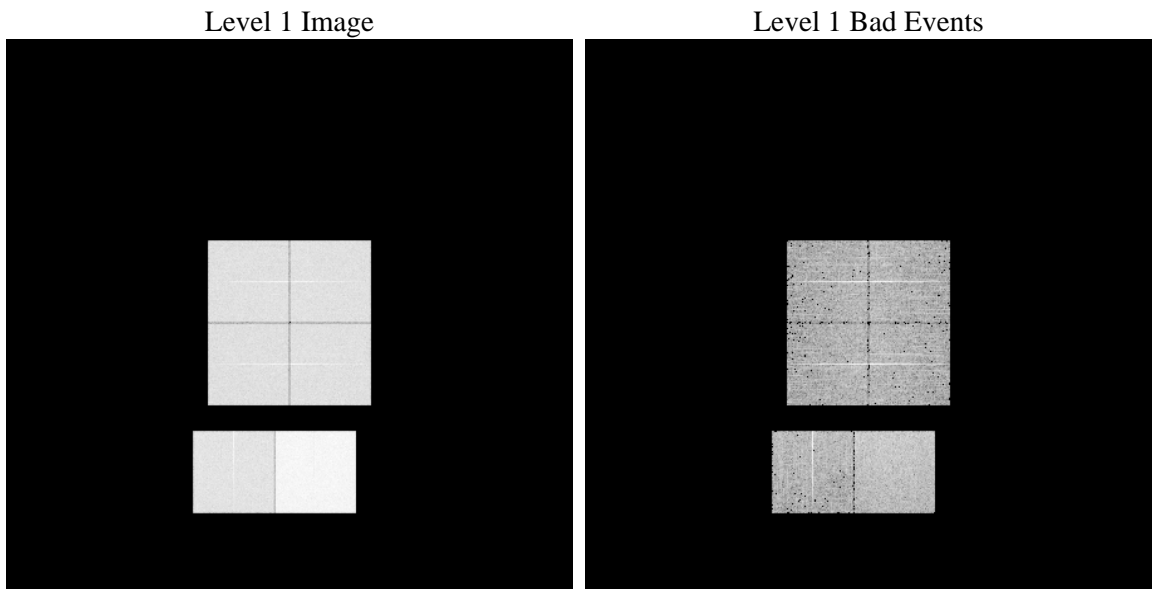
1 Front

seq_num	 	Sequence number
obs_id	61058	Observation id
title	ACIS-012367 diagnostics	Proposal title
observer	CHANDRA engineering request/realtime commanding	Principal investig
object	 	Source name
dtcycle	0	
cycle	P	events from which exps? Prim/Second/Both
ra_targ	0.0	Observer's specified target RA [deg]
dec_targ	0.0	Observer's specified target Dec [deg]
ra_nom	346.97102574267	Nominal RA [deg]
dec_nom	8.9999003779474	Nominal Dec [deg]
roll_nom	147.35121677583	Nominal Roll [deg]
revision	3	Processing version of data
ontime	8412.0229758322	Sum of GTIs [s]
livetime	8305.5048758001	Livetime [s]
ontime0	4009.1563660204	Sum of GTIs [s]
ontime1	4012.3962808251	Sum of GTIs [s]
ontime2	3842.1228228509	Sum of GTIs [s]
ontime3	3915.1666151881	Sum of GTIs [s]
ontime6	4273.1356197596	Sum of GTIs [s]
ontime7	8412.0229758322	Sum of GTIs [s]
l2events	1301941	Number of level 2 events

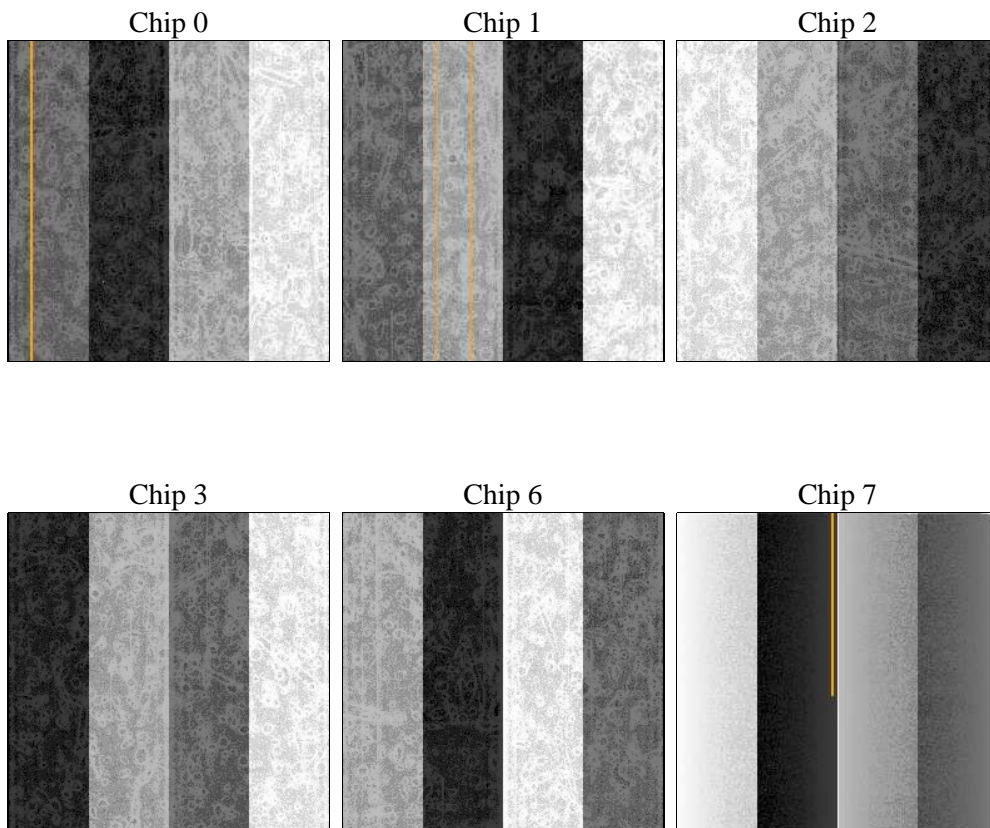
2 OBI

2.1 OBI

2.1.1 Images



2.1.2 Bias



2.1.3 Parameters

obi_num	2	Obi number	sched_exp_time	0.0	[s] Scheduled observation exposure time
ascdsver	8.4.5	Processing system revision	ontime	8412.0229758322	Sum of GTIs [s]
caldbver	4.5.2	 	ontime0	4009.1563660204	Sum of GTIs [s]
date	2012-10-14T04:12:41	Date and time of file creation	ontime1	4012.3962808251	Sum of GTIs [s]
revision	3	Processing version of data	ontime2	3842.1228228509	Sum of GTIs [s]
			ontime3	3915.1666151881	Sum of GTIs [s]
			ontime6	4273.1356197596	Sum of GTIs [s]
			ontime7	8412.0229758322	Sum of GTIs [s]
			l1events	1553521	Number of level 1 events

2.1.4 Events

	ccd 0	ccd 1	ccd 2	ccd 3	ccd 6	ccd 7		ccd 0	ccd 1	ccd 2	ccd 3	ccd 6	ccd 7
level 1 events	216081	217593	209027	215252	240045	455523	grade 0 events	104985	103583	103284	105847	114156	102483
rejected events	28116	29838	28594	29958	32068	45916		48%	47%	49%	49%	47%	22%
rejected %	13%	13%	13%	13%	13%	10%	grade 1 events	624	461	586	590	522	256
								0%	0%	0%	0%	0%	0%
							grade 2 events	32274	33502	29681	30807	35907	91790
								14%	15%	14%	14%	14%	20%
							grade 3 events	12219	11860	11893	12115	13001	41291
								5%	5%	5%	5%	5%	9%
							grade 4 events	12144	11988	11756	12106	12842	40566
								5%	5%	5%	5%	5%	8%
							grade 5 events	1900	1893	1822	1979	2172	8589
								0%	0%	0%	0%	0%	1%
							grade 6 events	27359	27692	24936	25293	33303	135907
								12%	12%	11%	11%	13%	29%
							grade 7 events	24576	26614	25069	26515	28142	34641
								11%	12%	11%	12%	11%	7%

2.2 Compared Parameters

Parameter	Planned	Actual
Instrument	ACIS	ACIS
Detector	ACIS-012367	ACIS-012367
Grating	NONE	NONE
Data mode	FAINT	FAINT
Observation mode	SECONDARY	SECONDARY
[deg] Pointing RA	0	346.9710257426704
[deg] Pointing Dec	0	8.999900377947377
[deg] Pointing Roll	0.0	147.3512167758309
[mm] SIM focus pos	-0.782348	-0.6828225247311905
[mm] SIM defocus	0	0.8505141146731063
[mm] SIM translation stage pos	-233.592463	250.466033080201
[mm] SIM translation stage offset	0	-0.01005468664627074
[s] Observation start time (MET)	146700708.782422	146700707.7577
Observation start date	2002-08-25T22:11:49	2002-08-25T22:11:47
[s] Observation end time (MET)	146722736.033331	146722735.00861
Observation end date	2002-08-26T04:18:56	2002-08-26T04:18:55
Read mode	TIMED	TIMED

Parameter	Planned	Actual
Obspar format version number	7	7
Obspar file type	PREDICTED	ACTUAL
Obspar update status	NONE	UPDATED
On-chip summing requested	N	N
Subarray requested	NONE	NONE
Alternating exposures requested	N	N
[s] Primary exposure time	0.000000	3.2

2.3 Star Slots

2.4 FID Slots

A Summary

A.1 Status

V&V Scientist	Beth Sundheim
V&V Date (YYYY-MM-DD)	2012.10.23
V&V Edition	1
V&V Disposition and Status	OK
V&V Charge Time	8.4120229758322

A.2 Comments