

V&V Reference Report

L2 ASCDS Version : 7.6.9

Observation 61040 - L2 Version 001
Chandra X-Ray Center

L2 Processing Date : Oct 2 2006

Contents

1	Front	2
2	OBI	3
2.1	OBI	3
2.1.1	Images	3
2.1.2	Bias	3
2.1.3	Parameters	4
2.1.4	Events	4
2.2	Compared Parameters	5
2.3	Aspect	6
2.4	Star Slots	8
2.5	FID Slots	8
A	Summary	9
A.1	Status	9
A.2	Comments	9

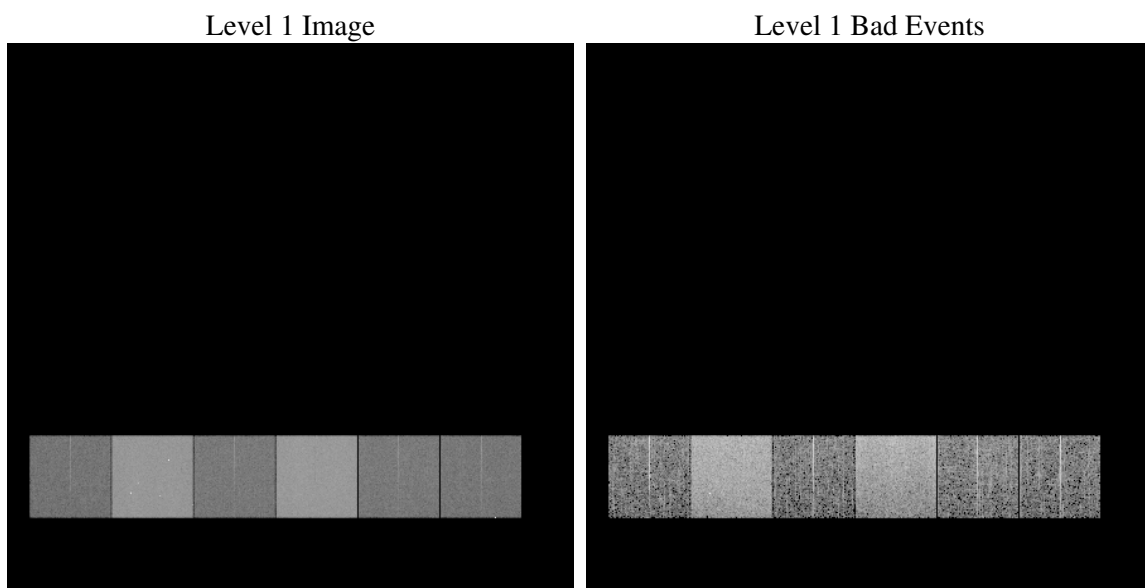
1 Front

seq_num	
obs_id	61040
title	ACIS-456789 diagnostics
observer	CHANDRA engineering request/realtime commanding
object	
dtcycle	0
cycle	P
ra_targ	0.0
dec_targ	0.0
ra_nom	70.572383939144
dec_nom	-60.474841277142
roll_nom	85.5949556774
revision	2
ontime	7525.6067765951
livetime	7430.3130122135
ontime4	2771.2084433436
ontime5	7791.4067690074
ontime6	3040.1729851067
ontime7	7525.6067765951
ontime8	3020.8088251948
ontime9	2939.5780538321
l2events	1187959

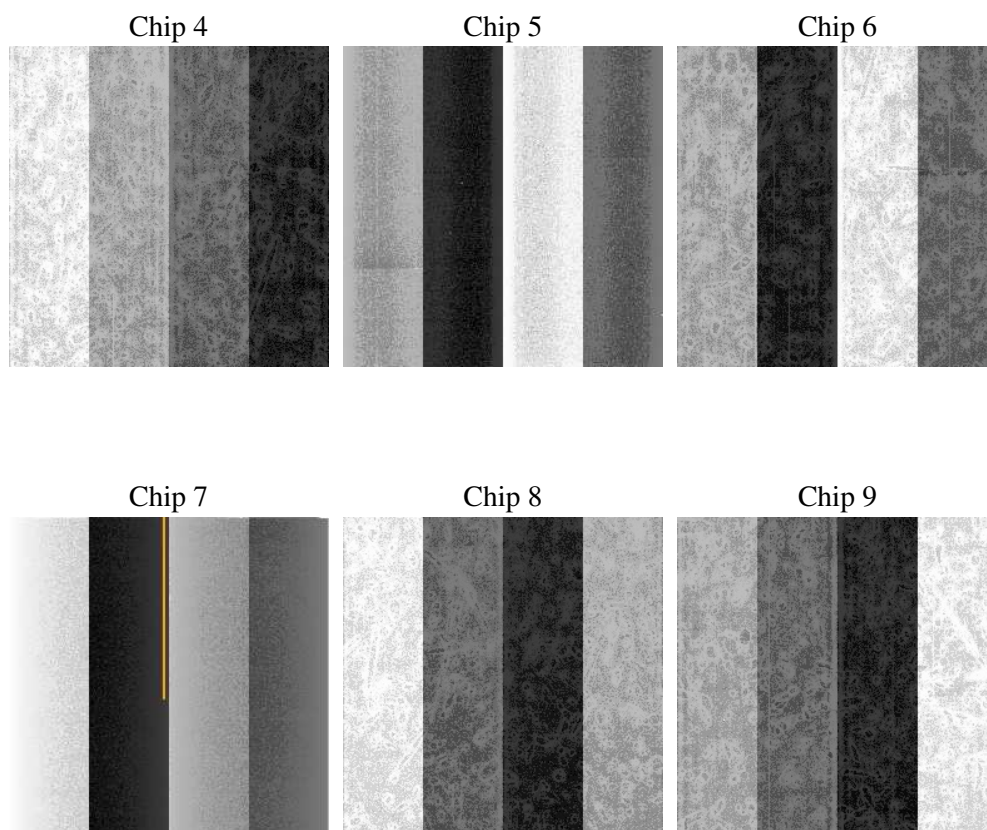
2 OBI

2.1 OBI

2.1.1 Images



2.1.2 Bias



2.1.3 Parameters

obi_num	1
ascdsver	7.6.9
caldsver	3.2.3
date	2006-10-03T01:45:25
revision	2

sched_exp_time	0.0
ontime	7528.8479994237
ontime4	2774.3265461624
ontime5	7794.6069518328
ontime6	3043.3321279287
ontime7	7528.8479994237
ontime8	3023.8858880401
ontime9	2942.860316664
l1events	1436064

2.1.4 Events

	ccd 4	ccd 5	ccd 6	ccd 7	ccd 8	ccd 9
level 1 events	146633	383818	168887	404506	172137	160083
rejected events	20779	58126	20418	49971	23862	21525
rejected %	14%	15%	12%	12%	13%	13%

	ccd 4	ccd 5	ccd 6	ccd 7	ccd 8	ccd 9
grade 0 events	73260	44278	81489	66686	81955	76810
	49%	11%	48%	16%	47%	47%
grade 1 events	492	239	365	159	398	376
	0%	0%	0%	0%	0%	0%
grade 2 events	20395	152613	25780	105475	26001	24277
	13%	39%	15%	26%	15%	15%
grade 3 events	8209	12207	9174	26730	9396	8744
	5%	3%	5%	6%	5%	5%
grade 4 events	8376	11788	9203	26592	9462	8778
	5%	3%	5%	6%	5%	5%
grade 5 events	1387	6711	1402	6742	1806	1556
	0%	1%	0%	1%	1%	0%
grade 6 events	15777	104939	22967	129207	21623	20111
	10%	27%	13%	31%	12%	12%
grade 7 events	18737	51043	18507	42915	21496	19431
	12%	13%	10%	10%	12%	12%

2.2 Compared Parameters

Parameter	Planned	Actual	Parameter	Planned	Actual
Instrument	ACIS	ACIS	Obspar format version number	6	6
Detector	ACIS-456789	ACIS-456789	Obspar file type	PREDICTED	ACTUAL
Grating	NONE	NONE	Obspar update status	NONE	UPDATED
Data mode	FAINT	FAINT	On-chip summing requested	N	N
Observation mode	SECONDARY	SECONDARY	Subarray requested	NONE	NONE
Pointing RA	0	70.57238393914415	Alternating exposures requested	N	N
Pointing Dec	0	-60.47484127714161	Primary exposure time	0.000000	3.2
Pointing Roll	0.0	85.59495567739981			
SIM focus pos (mm)	-0.684267	-0.6828225247311905			
SIM defocus (mm)	0	0.8505141146731063			
SIM translation stage pos (mm)	-190.132523	250.466033080201			
SIM translation stage offset (mm)	0	-0.01005468664627074			
Observation start time	148040277.237701	148040276.21299			
Observation start date	2002-09-10T10:17:57	2002-09-10T10:17:56			
Observation end time	148069803.388921	148069802.3642			
Observation end date	2002-09-10T18:30:03	2002-09-10T18:30:02			
Read mode	TIMED	TIMED			

2.3 Aspect

2.4 Star Slots

2.5 FID Slots

A Summary

A.1 Status

V&V Scientist	Jen Lauer
V&V Date (YYYY-MM-DD)	2006.10.03
V&V Edition	1
V&V Disposition and Status	OK
V&V Charge Time	7.52560677

A.2 Comments