

V&V Reference Report

L2 ASCDS Version : 8.4.5

Observation 61029 - L2 Version 3
Chandra X-Ray Center

L2 Processing Date : Oct 14 2012

Contents

1	Front	2
2	OBI	3
2.1	OBI	3
2.1.1	Images	3
2.1.2	Bias	3
2.1.3	Parameters	4
2.1.4	Events	4
2.2	Compared Parameters	5
2.3	Star Slots	6
2.4	FID Slots	6
A	Summary	7
A.1	Status	7
A.2	Comments	7

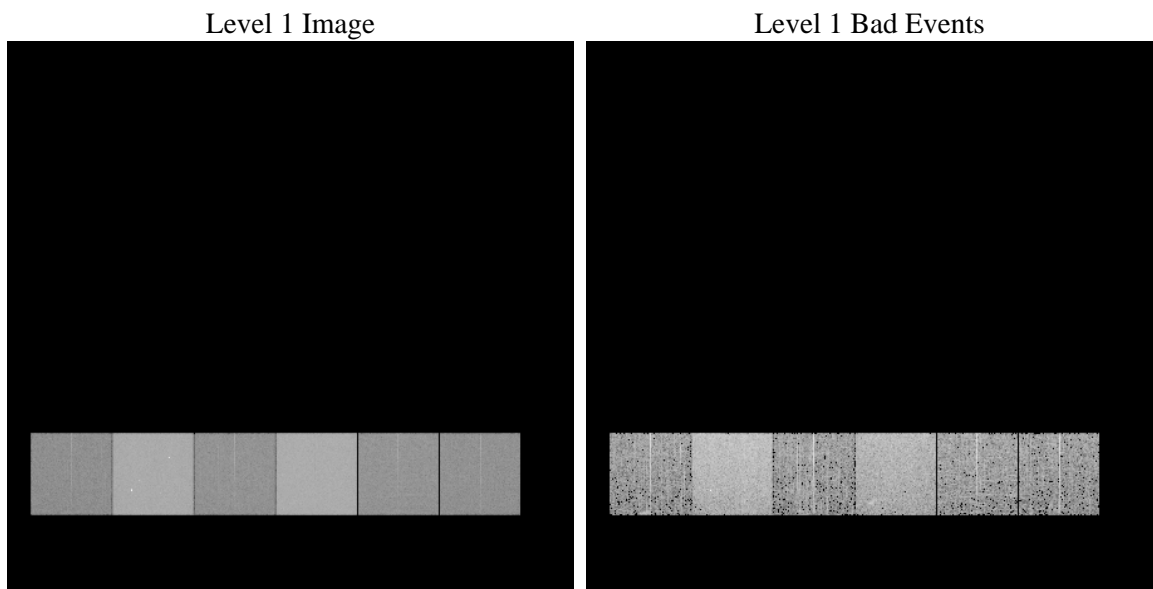
1 Front

seq_num	 	Sequence number
obs_id	61029	Observation id
title	ACIS-456789 diagnostics	Proposal title
observer	CHANDRA engineering request/realtime commanding	Principal investig
object	 	Source name
dtcycle	0	
cycle	P	events from which exps? Prim/Second/Both
ra_targ	0.0	Observer's specified target RA [deg]
dec_targ	0.0	Observer's specified target Dec [deg]
ra_nom	112.89006401343	Nominal RA [deg]
dec_nom	45.027744878885	Nominal Dec [deg]
roll_nom	71.37419357917	Nominal Roll [deg]
revision	3	Processing version of data
ontime	7506.7956063747	Sum of GTIs [s]
livetime	7411.7400403572	Livetime [s]
ontime4	2699.5926386714	Sum of GTIs [s]
ontime5	7791.9999709725	Sum of GTIs [s]
ontime6	2932.9055713713	Sum of GTIs [s]
ontime7	7506.7956063747	Sum of GTIs [s]
ontime8	3043.1821442544	Sum of GTIs [s]
ontime9	2874.4444290102	Sum of GTIs [s]
l2events	1204934	Number of level 2 events

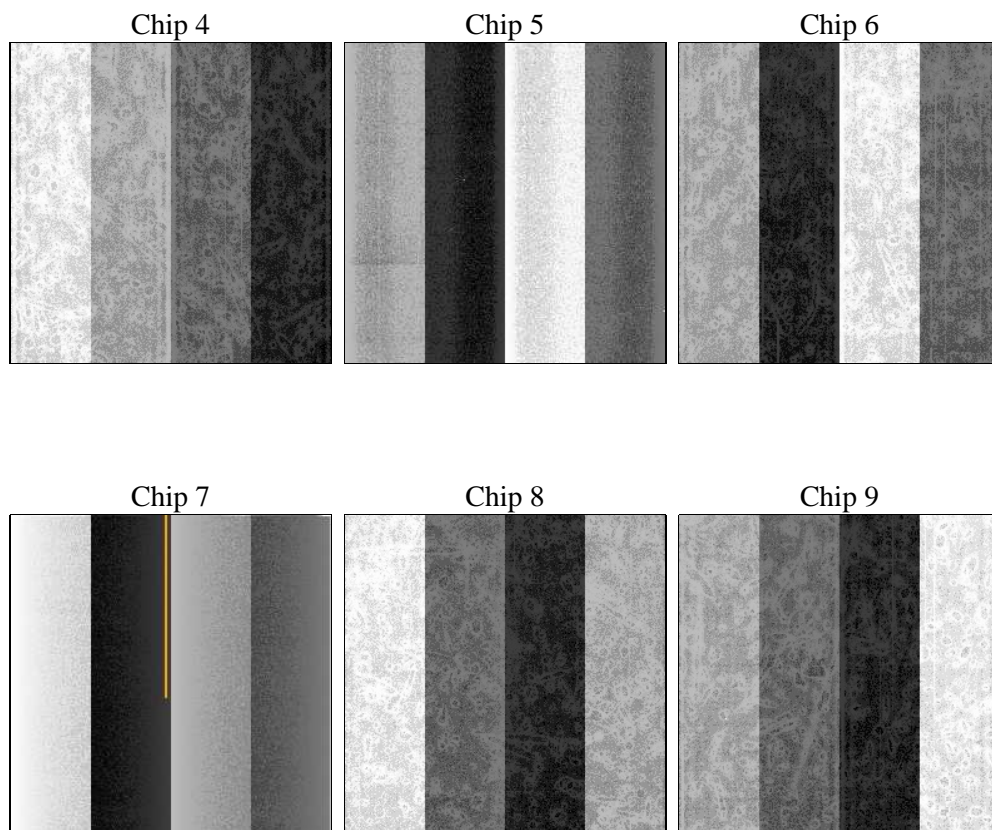
2 OBI

2.1 OBI

2.1.1 Images



2.1.2 Bias



2.1.3 Parameters

obi_num	0	Obi number	sched_exp_time	0.0	[s] Scheduled observation exposure time
ascdsver	8.4.5	Processing system revision	ontime	7506.7956063747	Sum of GTIs [s]
caldbver	4.5.2	 	ontime4	2699.5926386714	Sum of GTIs [s]
date	2012-10-14T22:21:11	Date and time of file creation	ontime5	7791.9999709725	Sum of GTIs [s]
revision	3	Processing version of data	ontime6	2932.9055713713	Sum of GTIs [s]
			ontime7	7506.7956063747	Sum of GTIs [s]
			ontime8	3043.1821442544	Sum of GTIs [s]
			ontime9	2874.4444290102	Sum of GTIs [s]
			l1events	1437113	Number of level 1 events

2.1.4 Events

	ccd 4	ccd 5	ccd 6	ccd 7	ccd 8	ccd 9		ccd 4	ccd 5	ccd 6	ccd 7	ccd 8	ccd 9
level 1 events	143035	388923	166344	408501	174355	155955	grade 0 events	70782	82989	78703	93577	82753	74766
rejected events	21158	51124	22061	39561	23632	20776		49%	21%	47%	22%	47%	47%
rejected %	14%	13%	13%	9%	13%	13%	grade 1 events	528	393	374	215	439	424
								0%	0%	0%	0%	0%	0%
							grade 2 events	19535	119319	24848	82003	26083	23214
								13%	30%	14%	20%	14%	14%
							grade 3 events	8046	22019	8922	37639	9857	8456
								5%	5%	5%	9%	5%	5%
							grade 4 events	8042	21979	9003	37402	9657	8630
								5%	5%	5%	9%	5%	5%
							grade 5 events	1383	9174	1478	7718	1788	1566
								0%	2%	0%	1%	1%	1%
							grade 6 events	15472	91630	22807	118491	22373	20113
								10%	23%	13%	29%	12%	12%
							grade 7 events	19247	41420	20209	31456	21405	18786
								13%	10%	12%	7%	12%	12%

2.2 Compared Parameters

Parameter	Planned	Actual	Parameter	Planned	Actual
Instrument	ACIS	ACIS	Obspar format version number	7	7
Detector	ACIS-456789	ACIS-456789	Obspar file type	PREDICTED	ACTUAL
Grating	NONE	NONE	Obspar update status	NONE	UPDATED
Data mode	FAINT	FAINT	On-chip summing requested	N	N
Observation mode	SECONDARY	SECONDARY	Subarray requested	NONE	NONE
[deg] Pointing RA	0	112.8900640134283	Alternating exposures requested	N	N
[deg] Pointing Dec	0	45.02774487888539	[s] Primary exposure time	3.2	3.2
[deg] Pointing Roll	0.0	71.3741935791704			
[mm] SIM focus pos	-0.684267	-0.6828225247311905			
[mm] SIM defocus	0	0.8505141146731063			
[mm] SIM translation stage pos	-190.132523	250.466033080201			
[mm] SIM translation stage offset	0	-0.01005468664627074			
[s] Observation start time (MET)	148725620.966015	148725619.94131			
Observation start date	2002-09-18T08:40:21	2002-09-18T08:40:19			
[s] Observation end time (MET)	148755741.61726	148755740.59255			
Observation end date	2002-09-18T17:02:22	2002-09-18T17:02:20			
Read mode	TIMED	TIMED			

2.3 Star Slots

2.4 FID Slots

A Summary

A.1 Status

V&V Scientist	Beth Sundheim
V&V Date (YYYY-MM-DD)	2012.10.24
V&V Edition	1
V&V Disposition and Status	OK
V&V Charge Time	7.5067956063747

A.2 Comments