

V&V Reference Report

L2 ASCDS Version : 7.6.9

Observation 61015 - L2 Version 001
Chandra X-Ray Center

L2 Processing Date : Oct 5 2006

Contents

1	Front	2
2	OBI	3
2.1	OBI	3
2.1.1	Images	3
2.1.2	Bias	3
2.1.3	Parameters	4
2.1.4	Events	4
2.2	Compared Parameters	5
2.3	Aspect	6
2.4	Star Slots	8
2.5	FID Slots	8
A	Summary	9
A.1	Status	9
A.2	Comments	9

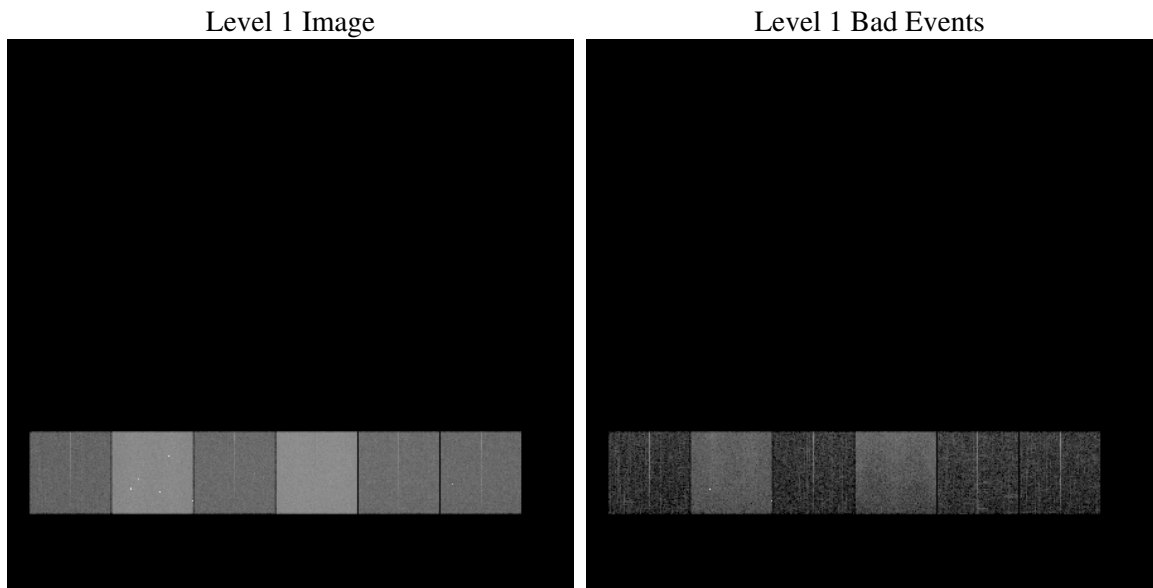
1 Front

seq_num	
obs_id	61015
title	ACIS-456789 diagnostics
observer	CHANDRA engineering request/realtime commanding
object	
dtcycle	0
cycle	P
ra_targ	0.0
dec_targ	0.0
ra_nom	285.02967719365
dec_nom	-50.021335424044
roll_nom	278.92736050505
revision	2
ontime	8393.5590084493
livetime	8287.2747102899
ontime4	2909.8181058168
ontime5	8396.7999687195
ontime6	3237.1620286703
ontime7	8393.5590084493
ontime8	3285.7770207524
ontime9	3185.8564325571
l2events	1254154

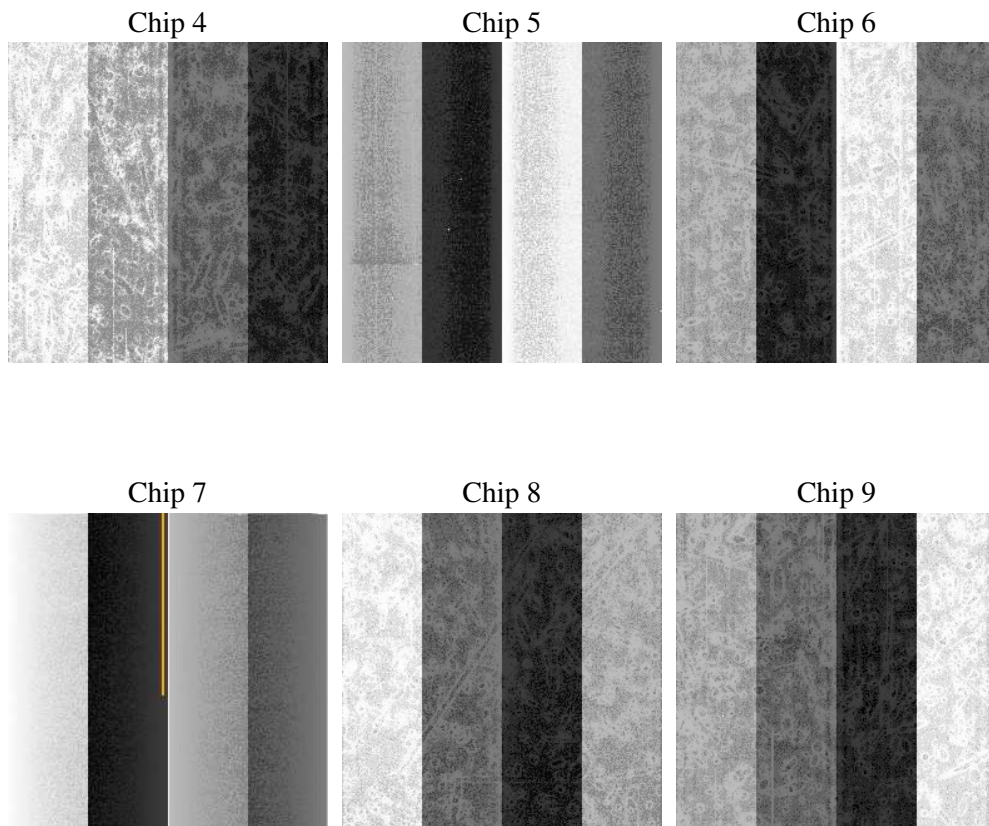
2 OBI

2.1 OBI

2.1.1 Images



2.1.2 Bias



2.1.3 Parameters

obi_num	0
ascdsver	7.6.9
caldbver	3.2.3
date	2006-10-06T01:10:40
revision	2

sched_exp_time	0.0
ontime	8459.0114499629
ontime4	2929.8967447281
ontime5	8462.252410233
ontime6	3263.7227176726
ontime7	8459.0114499629
ontime8	3315.5787099004
ontime9	3211.8659584224
l1events	1553825

2.1.4 Events

	ccd 4	ccd 5	ccd 6	ccd 7	ccd 8	ccd 9
level 1 events	151564	418318	178381	447421	186766	171375
rejected events	23820	74193	23894	65204	27820	24480
rejected %	15%	17%	13%	14%	14%	14%

	ccd 4	ccd 5	ccd 6	ccd 7	ccd 8	ccd 9
grade 0 events	75721	39278	84986	65143	88629	82629
	49%	9%	47%	14%	47%	48%
grade 1 events	519	537	408	152	433	473
	0%	0%	0%	0%	0%	0%
grade 2 events	19357	166794	27054	120202	27606	24753
	12%	39%	15%	26%	14%	14%
grade 3 events	8561	10266	9370	27003	10136	9346
	5%	2%	5%	6%	5%	5%
grade 4 events	8501	9761	9406	26410	10156	9341
	5%	2%	5%	5%	5%	5%
grade 5 events	1462	7354	1680	7825	1832	1727
	0%	1%	0%	1%	0%	1%
grade 6 events	16441	120625	24919	146468	23878	22044
	10%	28%	13%	32%	12%	12%
grade 7 events	21002	63703	20558	54218	24096	21062
	13%	15%	11%	12%	12%	12%

2.2 Compared Parameters

Parameter	Planned	Actual	Parameter	Planned	Actual
Instrument	ACIS	ACIS	Obspar format version number	6	6
Detector	ACIS-456789	ACIS-456789	Obspar file type	PREDICTED	ACTUAL
Grating	NONE	NONE	Obspar update status	NONE	UPDATED
Data mode	FAINT	FAINT	On-chip summing requested	N	N
Observation mode	SECONDARY	SECONDARY	Subarray requested	NONE	NONE
Pointing RA	0	285.0296771936516	Alternating exposures requested	N	N
Pointing Dec	0	-50.02133542404352	Primary exposure time	0.000000	3.2
Pointing Roll	0.0	278.9273605050456			
SIM focus pos (mm)	-0.684267	-0.6828225247311905			
SIM defocus (mm)	0	0.8505141146731063			
SIM translation stage pos (mm)	-190.132523	250.466033080201			
SIM translation stage offset (mm)	0	-0.01005468664627074			
Observation start time	149669172.455081	149669171.43036			
Observation start date	2002-09-29T06:46:12	2002-09-29T06:46:11			
Observation end time	149691843.406021	149691842.3813			
Observation end date	2002-09-29T13:04:03	2002-09-29T13:04:02			
Read mode	TIMED	TIMED			

2.3 Aspect

2.4 Star Slots

2.5 FID Slots

A Summary

A.1 Status

V&V Scientist	Jen Lauer
V&V Date (YYYY-MM-DD)	2006.10.06
V&V Edition	1
V&V Disposition and Status	OK
V&V Charge Time	8.393559

A.2 Comments

The ACIS focal plane temperature was above calibration limits for the entire observation.