

V&V Reference Report

L2 ASCDS Version : 8.4.5

Observation 61009 - L2 Version 3
Chandra X-Ray Center

L2 Processing Date : Oct 15 2012

Contents

1	Front	2
2	OBI	3
2.1	OBI	3
2.1.1	Images	3
2.1.2	Bias	3
2.1.3	Parameters	4
2.1.4	Events	4
2.2	Compared Parameters	5
2.3	Star Slots	6
2.4	FID Slots	6
A	Summary	7
A.1	Status	7
A.2	Comments	7

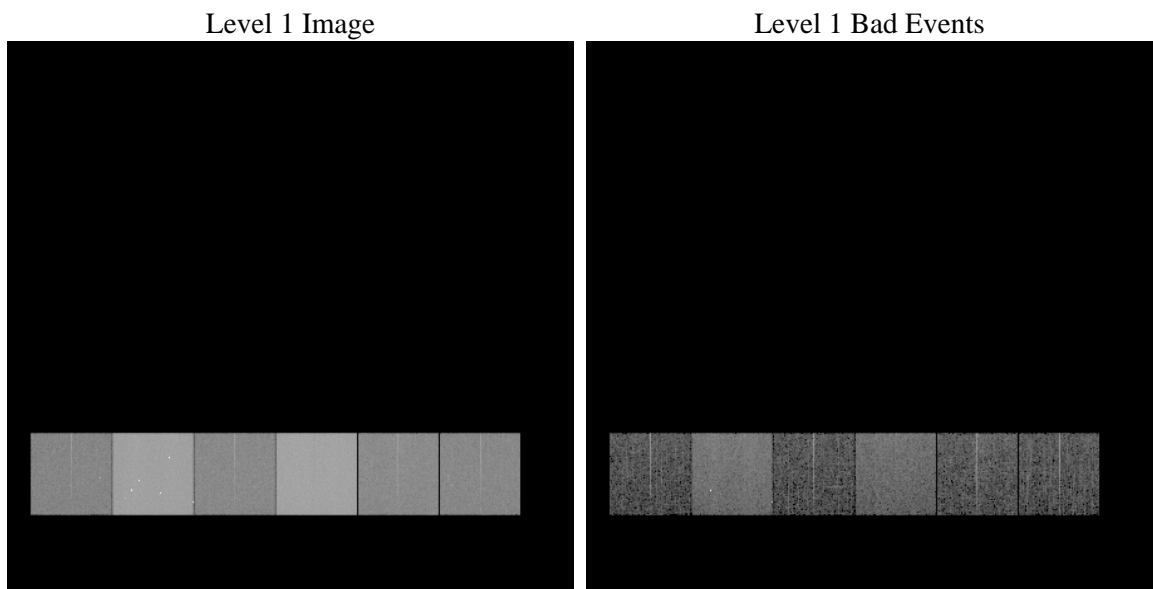
1 Front

seq_num	 	Sequence number
obs_id	61009	Observation id
title	ACIS-456789 diagnostics	Proposal title
observer	CHANDRA engineering request/realtime commanding	Principal investig
object	 	Source name
dtcycle	0	
cycle	P	events from which exps? Prim/Second/Both
ra_targ	0.0	Observer's specified target RA [deg]
dec_targ	0.0	Observer's specified target Dec [deg]
ra_nom	30.688282042207	Nominal RA [deg]
dec_nom	71.084639673859	Nominal Dec [deg]
roll_nom	157.98395428943	Nominal Roll [deg]
revision	3	Processing version of data
ontime	8431.7132465243	Sum of GTIs [s]
livetime	8324.9458164287	Livetime [s]
ontime4	2974.0937430859	Sum of GTIs [s]
ontime5	8454.3999685049	Sum of GTIs [s]
ontime6	3252.7809966803	Sum of GTIs [s]
ontime7	8431.7132465243	Sum of GTIs [s]
ontime8	3353.3340809047	Sum of GTIs [s]
ontime9	3155.4270255864	Sum of GTIs [s]
l2events	1280896	Number of level 2 events

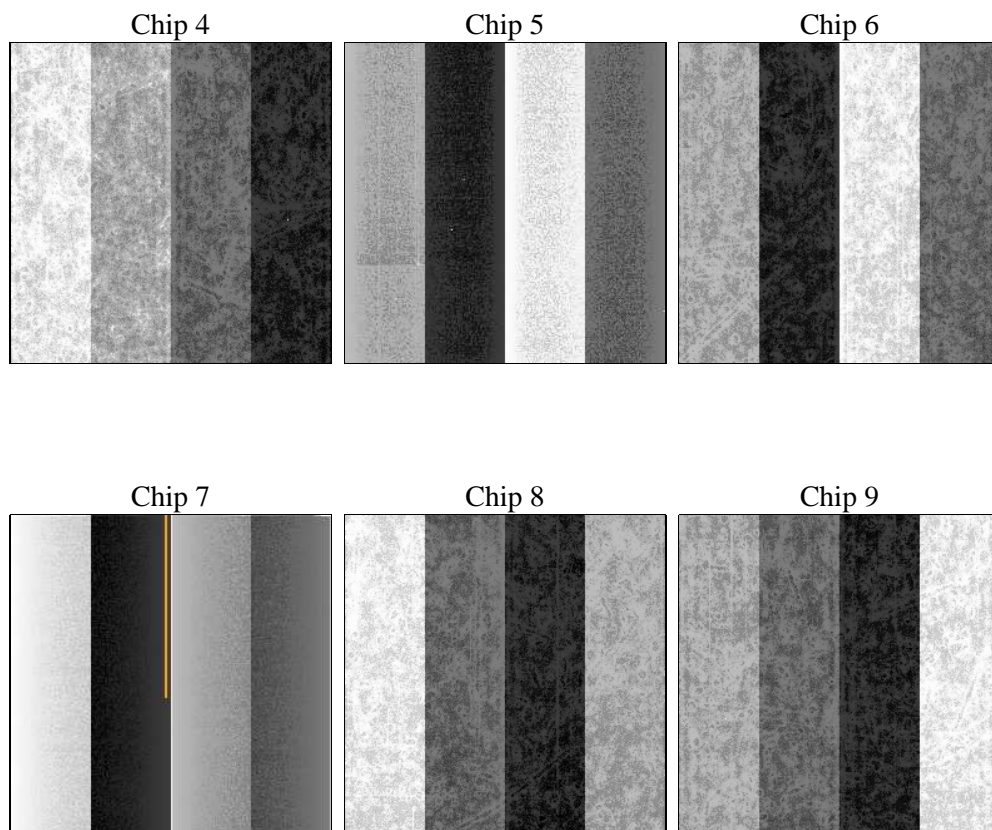
2 OBI

2.1 OBI

2.1.1 Images



2.1.2 Bias



2.1.3 Parameters

obi_num	0	Obi number	sched_exp_time	0.0	[s] Scheduled observation exposure time
ascdsver	8.4.5	Processing system revision	ontime	8431.7132465243	Sum of GTIs [s]
caldsver	4.5.2	 	ontime4	2974.0937430859	Sum of GTIs [s]
date	2012-10-15T12:12:30	Date and time of file creation	ontime5	8454.3999685049	Sum of GTIs [s]
revision	3	Processing version of data	ontime6	3252.7809966803	Sum of GTIs [s]
			ontime7	8431.7132465243	Sum of GTIs [s]
			ontime8	3353.3340809047	Sum of GTIs [s]
			ontime9	3155.4270255864	Sum of GTIs [s]
			l1events	1553599	Number of level 1 events

2.1.4 Events

	ccd 4	ccd 5	ccd 6	ccd 7	ccd 8	ccd 9		ccd 4	ccd 5	ccd 6	ccd 7	ccd 8	ccd 9
level 1 events	153225	420862	176810	446675	187335	168692	grade 0 events	77059	74105	84074	99077	88708	81131
rejected events	23197	64052	23093	45817	27050	24493		50%	17%	47%	22%	47%	48%
rejected %	15%	15%	13%	10%	14%	14%	grade 1 events	533	295	328	271	430	471
								0%	0%	0%	0%	0%	0%
							grade 2 events	19278	140672	26531	88685	27588	23976
								12%	33%	15%	19%	14%	14%
							grade 3 events	8863	18059	9312	40025	10343	9001
								5%	4%	5%	8%	5%	5%
							grade 4 events	8667	17591	9521	39508	10139	9051
								5%	4%	5%	8%	5%	5%
							grade 5 events	1474	11311	1678	8848	1979	1730
								0%	2%	0%	1%	1%	1%
							grade 6 events	16161	106383	24279	133563	23507	21040
								10%	25%	13%	29%	12%	12%
							grade 7 events	21190	52446	21087	36698	24641	22292
								13%	12%	11%	8%	13%	13%

2.2 Compared Parameters

Parameter	Planned	Actual
Instrument	ACIS	ACIS
Detector	ACIS-456789	ACIS-456789
Grating	NONE	NONE
Data mode	FAINT	FAINT
Observation mode	SECONDARY	SECONDARY
[deg] Pointing RA	0	30.68828204220692
[deg] Pointing Dec	0	71.08463967385872
[deg] Pointing Roll	0.0	157.9839542894294
[mm] SIM focus pos	-0.684267	-0.6828225247311905
[mm] SIM defocus	0	0.8505141146731063
[mm] SIM translation stage pos	-190.132523	250.466033080201
[mm] SIM translation stage offset	0	-0.01005468664627074
[s] Observation start time (MET)	150124748.073958	150124747.04922
Observation start date	2002-10-04T13:19:08	2002-10-04T13:19:07
[s] Observation end time (MET)	150147035.674863	150147034.65015
Observation end date	2002-10-04T19:30:36	2002-10-04T19:30:34
Read mode	TIMED	TIMED

Parameter	Planned	Actual
Obspar format version number	7	7
Obspar file type	PREDICTED	ACTUAL
Obspar update status	NONE	UPDATED
On-chip summing requested	N	N
Subarray requested	NONE	NONE
Alternating exposures requested	N	N
[s] Primary exposure time	0.000000	3.2

2.3 Star Slots

2.4 FID Slots

A Summary

A.1 Status

V&V Scientist	Beth Sundheim
V&V Date (YYYY-MM-DD)	2012.10.24
V&V Edition	1
V&V Disposition and Status	OK
V&V Charge Time	8.4317132465243

A.2 Comments