

# V&V Reference Report

## L2 ASCDS Version : 7.6.9

Observation 61009 - L2 Version 001  
Chandra X-Ray Center

L2 Processing Date : Oct 5 2006

## Contents

<b>1</b>	<b>Front</b>	<b>2</b>
<b>2</b>	<b>OBI</b>	<b>3</b>
2.1	OBI . . . . .	3
2.1.1	Images . . . . .	3
2.1.2	Bias . . . . .	3
2.1.3	Parameters . . . . .	4
2.1.4	Events . . . . .	4
2.2	Compared Parameters . . . . .	5
2.3	Aspect . . . . .	6
2.4	Star Slots . . . . .	8
2.5	FID Slots . . . . .	8
<b>A</b>	<b>Summary</b>	<b>9</b>
A.1	Status . . . . .	9
A.2	Comments . . . . .	9

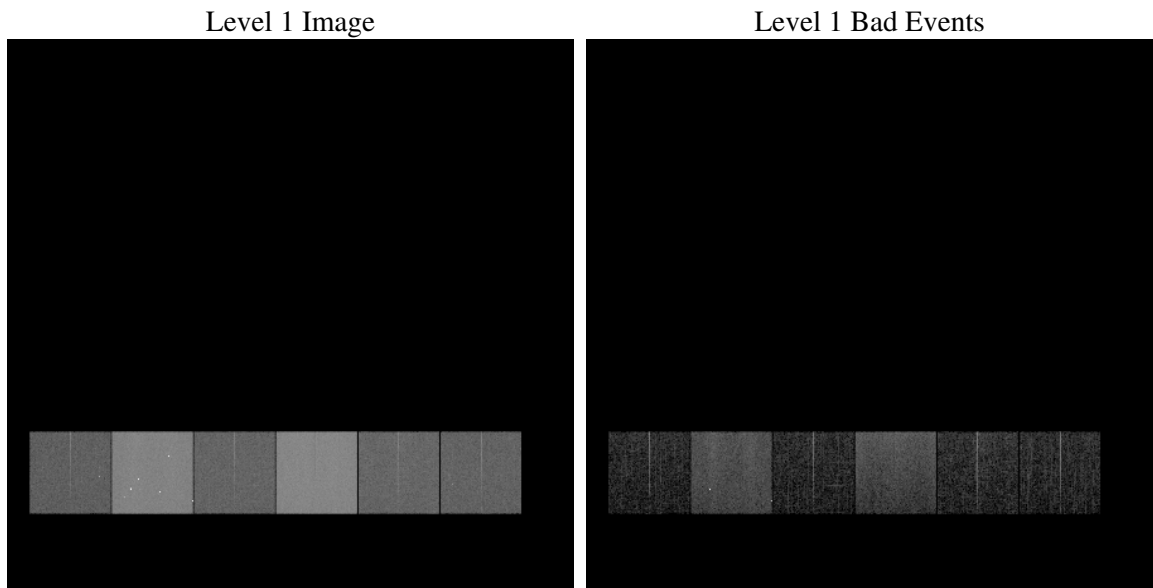
# 1 Front

seq_num	&#160
obs_id	61009
title	ACIS-456789 diagnostics
observer	CHANDRA engineering request/realtime commanding
object	&#160
dtcycle	0
cycle	P
ra_targ	0.0
dec_targ	0.0
ra_nom	30.688282031064
dec_nom	71.084639673344
roll_nom	157.98395430007
revision	2
ontime	8430.1838765442
livetime	8323.4358122521
ontime4	2972.4937430918
ontime5	8452.9116385281
ontime6	3251.1809966862
ontime7	8430.1838765442
ontime8	3351.7340809107
ontime9	3153.8270255923
l2events	1254707

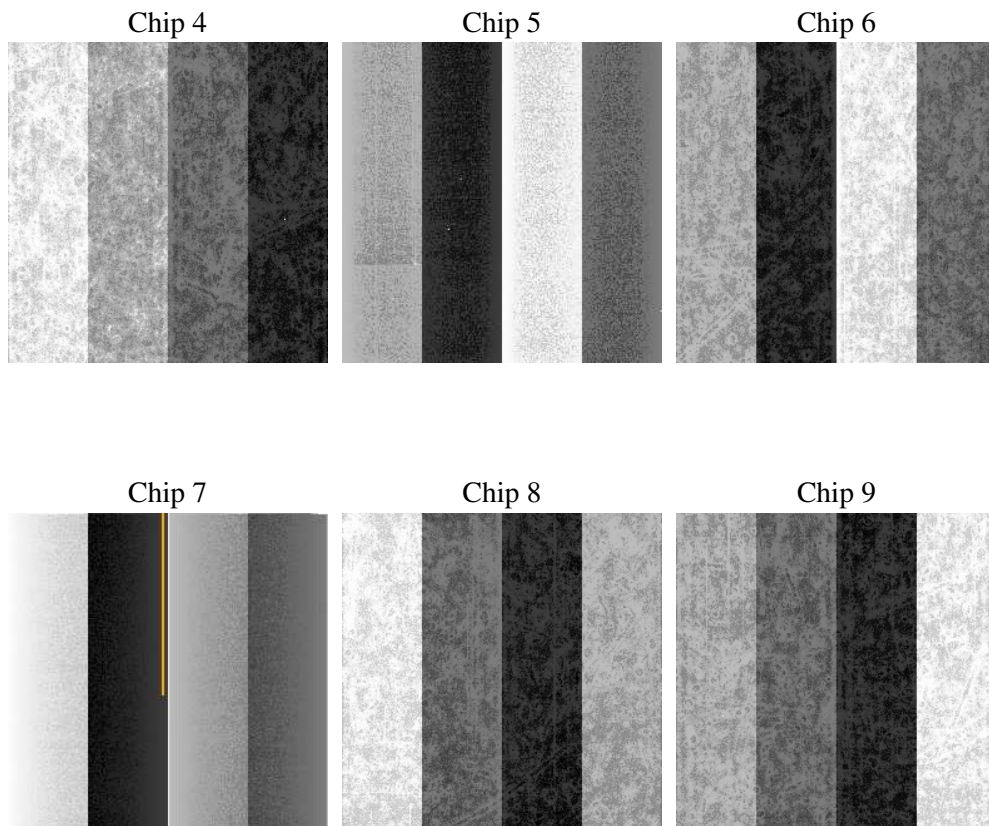
## 2 OBI

### 2.1 OBI

#### 2.1.1 Images



#### 2.1.2 Bias



### 2.1.3 Parameters

obi_num	0
ascdsver	7.6.9
caldsver	3.2.3
date	2006-10-06T01:24:59
revision	2

sched_exp_time	0.0
ontime	8433.0845480859
ontime4	2975.2712946236
ontime5	8455.7712700665
ontime6	3253.9995882213
ontime7	8433.0845480859
ontime8	3354.470592469
ontime9	3156.7687371373
l1events	1553599

### 2.1.4 Events

	ccd 4	ccd 5	ccd 6	ccd 7	ccd 8	ccd 9
level 1 events	153225	420862	176810	446675	187335	168692
rejected events	23378	73027	23334	62655	27248	24697
rejected %	15%	17%	13%	14%	14%	14%

	ccd 4	ccd 5	ccd 6	ccd 7	ccd 8	ccd 9
grade 0 events	76904	40422	83448	65384	88509	80925
	50%	9%	47%	14%	47%	47%
grade 1 events	522	159	315	165	413	453
	0%	0%	0%	0%	0%	0%
grade 2 events	19428	163471	27155	119527	27790	24183
	12%	38%	15%	26%	14%	14%
grade 3 events	8804	10459	9218	27281	10282	8935
	5%	2%	5%	6%	5%	5%
grade 4 events	8607	9851	9416	26505	10079	8986
	5%	2%	5%	5%	5%	5%
grade 5 events	1467	8272	1675	7737	1980	1731
	0%	1%	0%	1%	1%	1%
grade 6 events	16259	123783	24398	145456	23592	21119
	10%	29%	13%	32%	12%	12%
grade 7 events	21234	64445	21185	54620	24690	22360
	13%	15%	11%	12%	13%	13%

## 2.2 Compared Parameters

Parameter	Planned	Actual	Parameter	Planned	Actual
Instrument	ACIS	ACIS	Obspar format version number	6	6
Detector	ACIS-456789	ACIS-456789	Obspar file type	PREDICTED	ACTUAL
Grating	NONE	NONE	Obspar update status	NONE	UPDATED
Data mode	FAINT	FAINT	On-chip summing requested	N	N
Observation mode	SECONDARY	SECONDARY	Subarray requested	NONE	NONE
Pointing RA	0	30.68828203106395	Alternating exposures requested	N	N
Pointing Dec	0	71.08463967334393	Primary exposure time	0.000000	3.2
Pointing Roll	0.0	157.983954300075			
SIM focus pos (mm)	-0.684267	-0.6828225247311905			
SIM defocus (mm)	0	0.8505141146731063			
SIM translation stage pos (mm)	-190.132523	250.466033080201			
SIM translation stage offset (mm)	0	-0.01005468664627074			
Observation start time	150124748.073958	150124747.04922			
Observation start date	2002-10-04T13:19:08	2002-10-04T13:19:07			
Observation end time	150147035.674863	150147034.65015			
Observation end date	2002-10-04T19:30:36	2002-10-04T19:30:34			
Read mode	TIMED	TIMED			

## 2.3 Aspect



## **2.4 Star Slots**

## **2.5 FID Slots**



## A Summary

### A.1 Status

V&V Scientist	Jen Lauer
V&V Date (YYYY-MM-DD)	2006.10.06
V&V Edition	1
V&V Disposition and Status	OK
V&V Charge Time	8.43018387

### A.2 Comments

The ACIS focal plane temperature was above calibration limits for the entire observation.