

V&V Reference Report

L2 ASCDS Version : 7.6.9

Observation 60987 - L2 Version 001
Chandra X-Ray Center

L2 Processing Date : Oct 7 2006

Contents

1	Front	2
2	OBI	3
2.1	OBI	3
2.1.1	Images	3
2.1.2	Bias	3
2.1.3	Parameters	4
2.1.4	Events	4
2.2	Compared Parameters	5
2.3	Aspect	6
2.4	Star Slots	8
2.5	FID Slots	8
A	Summary	9
A.1	Status	9
A.2	Comments	9

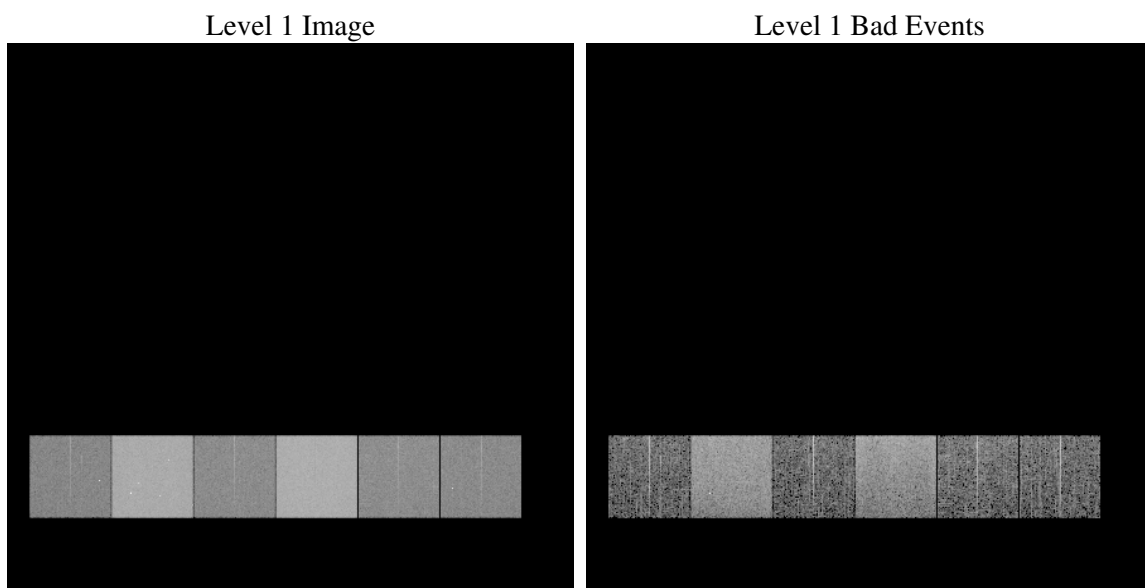
1 Front

seq_num	
obs_id	60987
title	ACIS-456789 diagnostics
observer	CHANDRA engineering request/realtime commanding
object	
dtcycle	0
cycle	P
ra_targ	0.0
dec_targ	0.0
ra_nom	53.397960011058
dec_nom	-3.0714891798996
roll_nom	61.255017164836
revision	2
ontime	7719.6080900729
livetime	7621.8577642464
ontime4	2741.5670379102
ontime5	7790.9506161213
ontime6	3013.7730388343
ontime7	7719.6080900729
ontime8	3094.88030231
ontime9	2945.5876107514
l2events	1182691

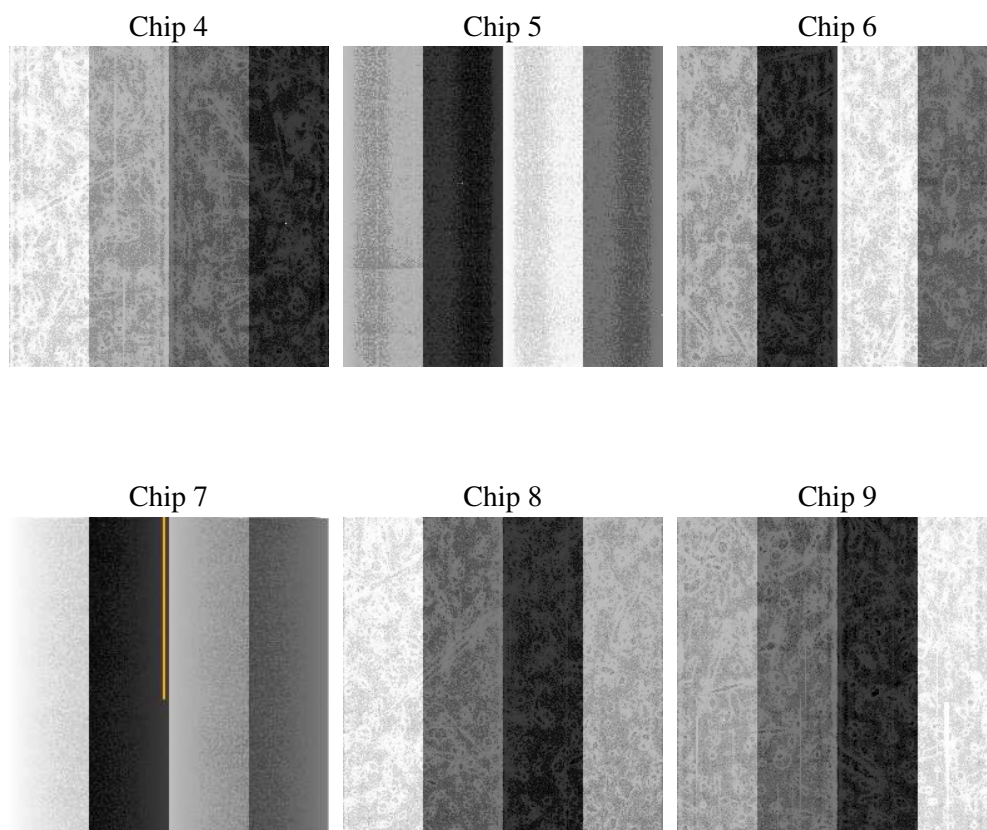
2 OBI

2.1 OBI

2.1.1 Images



2.1.2 Bias



2.1.3 Parameters

obi_num	0
ascdsver	7.6.9
caldsver	3.2.3
date	2006-10-07T16:22:27
revision	2

sched_exp_time	0.0
ontime	7720.0812473297
ontime4	2741.9170751572
ontime5	7791.3827333748
ontime6	3014.1641160846
ontime7	7720.0812473297
ontime8	3095.1892995834
ontime9	2946.1018080115
l1events	1434202

2.1.4 Events

	ccd 4	ccd 5	ccd 6	ccd 7	ccd 8	ccd 9
level 1 events	144346	379235	166785	410300	174208	159328
rejected events	20847	58533	21259	52578	24105	21544
rejected %	14%	15%	12%	12%	13%	13%

	ccd 4	ccd 5	ccd 6	ccd 7	ccd 8	ccd 9
grade 0 events	71767	42315	79731	65902	82667	76213
	49%	11%	47%	16%	47%	47%
grade 1 events	519	325	372	162	420	446
	0%	0%	0%	0%	0%	0%
grade 2 events	19738	151029	24738	108045	25878	23456
	13%	39%	14%	26%	14%	14%
grade 3 events	8148	11628	8924	26689	9632	8631
	5%	3%	5%	6%	5%	5%
grade 4 events	8114	11329	9044	26038	9695	8851
	5%	2%	5%	6%	5%	5%
grade 5 events	1337	6617	1549	6922	1776	1505
	0%	1%	0%	1%	1%	0%
grade 6 events	15732	104401	23089	131048	22231	20633
	10%	27%	13%	31%	12%	12%
grade 7 events	18991	51591	19338	45494	21909	19593
	13%	13%	11%	11%	12%	12%

2.2 Compared Parameters

Parameter	Planned	Actual	Parameter	Planned	Actual
Instrument	ACIS	ACIS	Obspar format version number	6	6
Detector	ACIS-456789	ACIS-456789	Obspar file type	PREDICTED	ACTUAL
Grating	NONE	NONE	Obspar update status	NONE	UPDATED
Data mode	FAINT	FAINT	On-chip summing requested	N	N
Observation mode	SECONDARY	SECONDARY	Subarray requested	NONE	NONE
Pointing RA	0	53.39796001105796	Alternating exposures requested	N	N
Pointing Dec	0	-3.071489179899648	Primary exposure time	0.000000	3.2
Pointing Roll	0.0	61.25501716483623			
SIM focus pos (mm)	-0.684267	-0.6828225247311905			
SIM defocus (mm)	0	0.8505141146731063			
SIM translation stage pos (mm)	-190.132523	250.466033080201			
SIM translation stage offset (mm)	0	-0.01005468664627074			
Observation start time	151689148.23881	151689147.21409			
Observation start date	2002-10-22T15:52:28	2002-10-22T15:52:27			
Observation end time	151723508.290237	151723507.26552			
Observation end date	2002-10-23T01:25:08	2002-10-23T01:25:07			
Read mode	TIMED	TIMED			

2.3 Aspect

2.4 Star Slots

2.5 FID Slots

A Summary

A.1 Status

V&V Scientist	Jen Lauer
V&V Date (YYYY-MM-DD)	2006.10.08
V&V Edition	1
V&V Disposition and Status	OK
V&V Charge Time	7.71960809

A.2 Comments