

V&V Reference Report

L2 ASCDS Version : 7.6.9

Observation 60950 - L2 Version 001
Chandra X-Ray Center

L2 Processing Date : Oct 13 2006

Contents

1	Front	2
2	OBI	3
2.1	OBI	3
2.1.1	Images	3
2.1.2	Bias	3
2.1.3	Parameters	4
2.1.4	Events	4
2.2	Compared Parameters	5
2.3	Aspect	6
2.4	Star Slots	8
2.5	FID Slots	8
A	Summary	9
A.1	Status	9
A.2	Comments	9

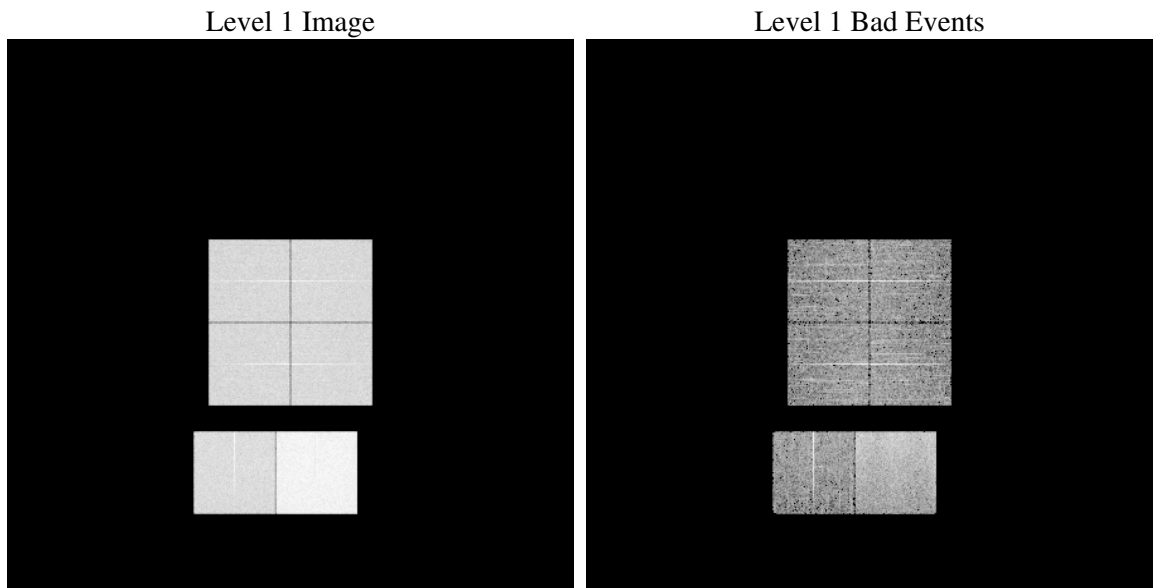
1 Front

seq_num	
obs_id	60950
title	ACIS-012367 diagnostics
observer	CHANDRA engineering request/realtime commanding
object	
dtcycle	0
cycle	P
ra_targ	0.0
dec_targ	0.0
ra_nom	356.42269971239
dec_nom	9.6921975403628
roll_nom	288.64501349725
revision	2
ontime	7794.6125246286
livetime	7695.9124474896
ontime0	3924.9221695065
ontime1	4015.7111137211
ontime2	3853.7028924227
ontime3	3931.3224377334
ontime6	4200.5310792029
ontime7	7794.6125246286
l2events	1188746

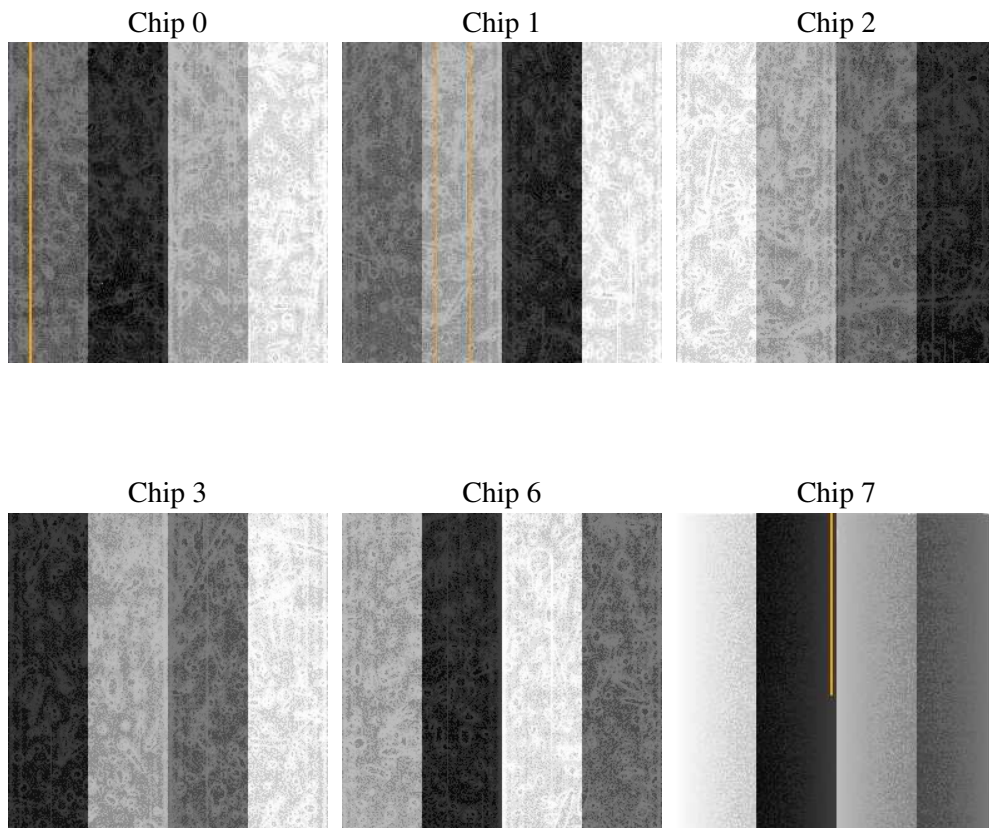
2 OBI

2.1 OBI

2.1.1 Images



2.1.2 Bias



2.1.3 Parameters

obi_num	0
ascdsver	7.6.9
caldbver	3.2.3
date	2006-10-13T22:44:55
revision	2

sched_exp_time	0.0
ontime	7797.8601946235
ontime0	3928.1287994981
ontime1	4018.8767037094
ontime2	3856.8274424076
ontime3	3934.6111477315
ontime6	4203.6145892143
ontime7	7797.8601946235
l1events	1430571

2.1.4 Events

	ccd 0	ccd 1	ccd 2	ccd 3	ccd 6	ccd 7
level 1 events	198451	203862	199892	203901	222251	402214
rejected events	26159	26120	27205	27999	27734	52911
rejected %	13%	12%	13%	13%	12%	13%

	ccd 0	ccd 1	ccd 2	ccd 3	ccd 6	ccd 7
grade 0 events	95175	97642	97748	99555	106463	64566
	47%	47%	48%	48%	47%	16%
grade 1 events	489	454	554	549	510	127
	0%	0%	0%	0%	0%	0%
grade 2 events	30206	31561	29099	29758	33485	104709
	15%	15%	14%	14%	15%	26%
grade 3 events	11140	11348	11097	11368	11956	26210
	5%	5%	5%	5%	5%	6%
grade 4 events	11136	11277	11090	11392	12024	26134
	5%	5%	5%	5%	5%	6%
grade 5 events	1753	1767	1722	1920	2057	7090
	0%	0%	0%	0%	0%	1%
grade 6 events	24780	26046	23809	23990	30752	127854
	12%	12%	11%	11%	13%	31%
grade 7 events	23772	23767	24773	25369	25004	45524
	11%	11%	12%	12%	11%	11%

2.2 Compared Parameters

Parameter	Planned	Actual	Parameter	Planned	Actual
Instrument	ACIS	ACIS	Obspar format version number	6	6
Detector	ACIS-012367	ACIS-012367	Obspar file type	PREDICTED	ACTUAL
Grating	NONE	NONE	Obspar update status	NONE	UPDATED
Data mode	FAINT	FAINT	On-chip summing requested	N	N
Observation mode	SECONDARY	SECONDARY	Subarray requested	NONE	NONE
Pointing RA	0	356.4226997123916	Alternating exposures requested	N	N
Pointing Dec	0	9.692197540362788	Primary exposure time	3.2	3.2
Pointing Roll	0.0	288.6450134972548			
SIM focus pos (mm)	-0.782348	-0.6828225247311905			
SIM defocus (mm)	0	0.8505141146731063			
SIM translation stage pos (mm)	-233.592463	250.4635187648994			
SIM translation stage offset (mm)	0	-0.007540371344731511			
Observation start time	154665401.912592	154665400.88788			
Observation start date	2002-11-26T02:36:42	2002-11-26T02:36:40			
Observation end time	154694446.313801	154694445.28909			
Observation end date	2002-11-26T10:40:46	2002-11-26T10:40:45			
Read mode	TIMED	TIMED			

2.3 Aspect

2.4 Star Slots

2.5 FID Slots

A Summary

A.1 Status

V&V Scientist	Beth Sundheim
V&V Date (YYYY-MM-DD)	2006.10.15
V&V Edition	1
V&V Disposition and Status	OK
V&V Charge Time	7.79461252

A.2 Comments