

V&V Reference Report

L2 ASCDS Version : 8.4.5

Observation 60943 - L2 Version 3
Chandra X-Ray Center

L2 Processing Date : Oct 18 2012

Contents

1	Front	2
2	OBI	3
2.1	OBI	3
2.1.1	Images	3
2.1.2	Bias	3
2.1.3	Parameters	4
2.1.4	Events	4
2.2	Compared Parameters	5
2.3	Star Slots	6
2.4	FID Slots	6
A	Summary	7
A.1	Status	7
A.2	Comments	7

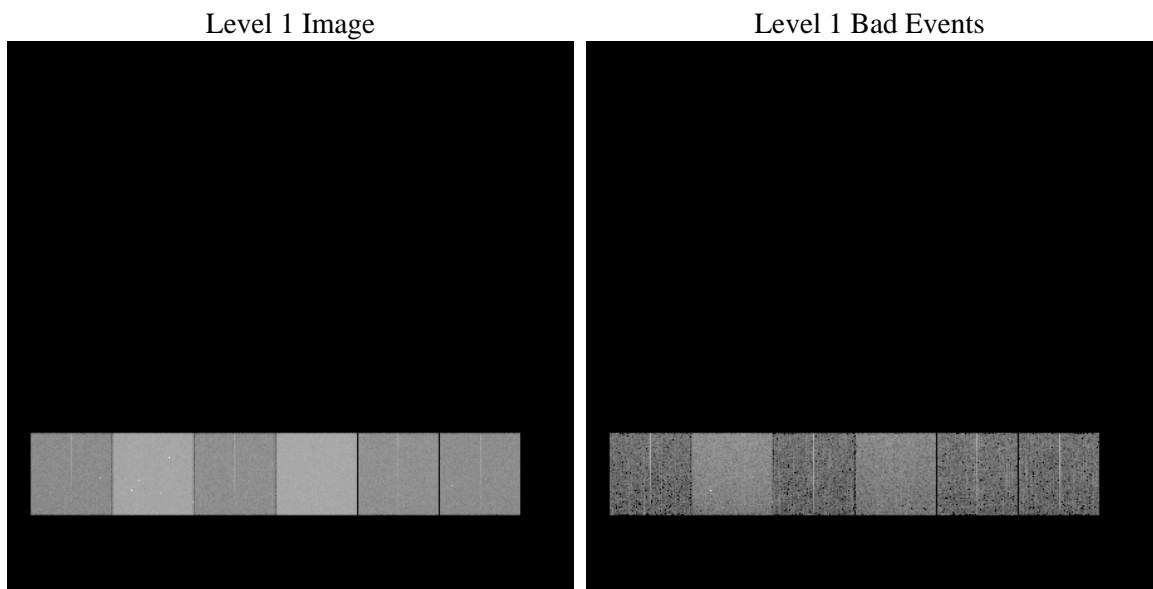
1 Front

seq_num	 	Sequence number
obs_id	60943	Observation id
title	ACIS-456789 diagnostics	Proposal title
observer	CHANDRA engineering request/realtime commanding	Principal investig
object	 	Source name
dtcycle	0	
cycle	P	events from which exps? Prim/Second/Both
ra_targ	0.0	Observer's specified target RA [deg]
dec_targ	0.0	Observer's specified target Dec [deg]
ra_nom	126.5922101353	Nominal RA [deg]
dec_nom	13.327572872867	Nominal Dec [deg]
roll_nom	72.477258542103	Nominal Roll [deg]
revision	3	Processing version of data
ontime	8461.1821314692	Sum of GTIs [s]
livetime	8354.0415486084	Livetime [s]
ontime4	3025.6271712184	Sum of GTIs [s]
ontime5	8463.9999684691	Sum of GTIs [s]
ontime6	3243.2813666761	Sum of GTIs [s]
ontime7	8461.1821314692	Sum of GTIs [s]
ontime8	3373.0039604604	Sum of GTIs [s]
ontime9	3129.7219862044	Sum of GTIs [s]
l2events	1284693	Number of level 2 events

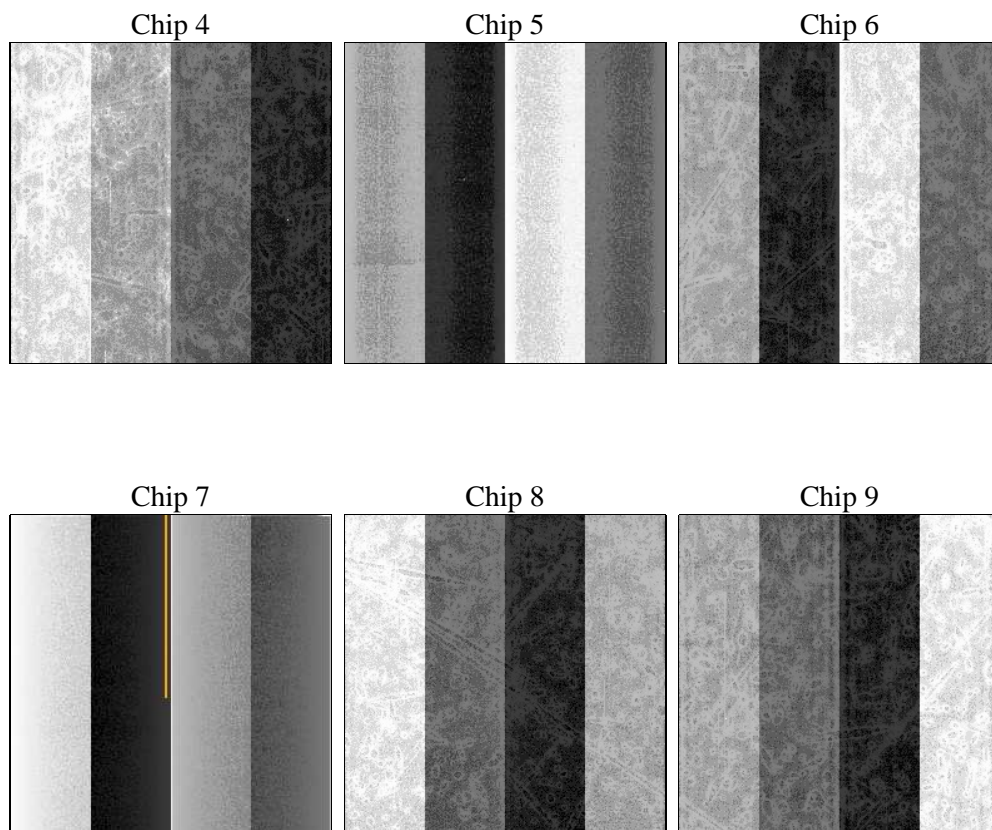
2 OBI

2.1 OBI

2.1.1 Images



2.1.2 Bias



2.1.3 Parameters

obi_num	1	Obi number	sched_exp_time	0.0	[s] Scheduled observation exposure time
ascdsver	8.4.5	Processing system revision	ontime	8461.1821314692	Sum of GTIs [s]
caldsver	4.5.2	 	ontime4	3025.6271712184	Sum of GTIs [s]
date	2012-10-18T06:34:44	Date and time of file creation	ontime5	8463.9999684691	Sum of GTIs [s]
revision	3	Processing version of data	ontime6	3243.2813666761	Sum of GTIs [s]
			ontime7	8461.1821314692	Sum of GTIs [s]
			ontime8	3373.0039604604	Sum of GTIs [s]
			ontime9	3129.7219862044	Sum of GTIs [s]
			l1events	1549494	Number of level 1 events

2.1.4 Events

	ccd 4	ccd 5	ccd 6	ccd 7	ccd 8	ccd 9		ccd 4	ccd 5	ccd 6	ccd 7	ccd 8	ccd 9
level 1 events	158560	410980	178399	445561	188470	167524	grade 0 events	77653	80818	83322	100467	88603	78505
rejected events	24218	58975	24782	45027	27447	25112		48%	19%	46%	22%	47%	46%
rejected %	15%	14%	13%	10%	14%	14%	grade 1 events	572	356	411	260	505	443
								0%	0%	0%	0%	0%	0%
							grade 2 events	21424	129596	26629	88381	27739	24125
								13%	31%	14%	19%	14%	14%
							grade 3 events	8976	21193	9542	39946	10302	9157
								5%	5%	5%	8%	5%	5%
							grade 4 events	8729	20988	9373	39824	10371	8970
								5%	5%	5%	8%	5%	5%
							grade 5 events	1528	10639	1800	8773	1979	1729
								0%	2%	1%	1%	1%	1%
							grade 6 events	17560	99410	24751	131916	24008	21655
								11%	24%	13%	29%	12%	12%
							grade 7 events	22118	47980	22571	35994	24963	22940
								13%	11%	12%	8%	13%	13%

2.2 Compared Parameters

Parameter	Planned	Actual
Instrument	ACIS	ACIS
Detector	ACIS-456789	ACIS-456789
Grating	NONE	NONE
Data mode	FAINT	FAINT
Observation mode	SECONDARY	SECONDARY
[deg] Pointing RA	0	126.5922101353039
[deg] Pointing Dec	0	13.32757287286656
[deg] Pointing Roll	0.0	72.47725854210337
[mm] SIM focus pos	-0.684267	-0.6828225247311905
[mm] SIM defocus	0	0.8505141146731063
[mm] SIM translation stage pos	-190.132523	250.466033080201
[mm] SIM translation stage offset	0	-0.01005468664627074
[s] Observation start time (MET)	155155382.683004	155155381.6583
Observation start date	2002-12-01T18:43:03	2002-12-01T18:43:01
[s] Observation end time (MET)	155177440.683923	155177439.65922
Observation end date	2002-12-02T00:50:41	2002-12-02T00:50:39
Read mode	TIMED	TIMED

Parameter	Planned	Actual
Obspar format version number	7	7
Obspar file type	PREDICTED	ACTUAL
Obspar update status	NONE	UPDATED
On-chip summing requested	N	N
Subarray requested	NONE	NONE
Alternating exposures requested	N	N
[s] Primary exposure time	0.000000	3.2

2.3 Star Slots

2.4 FID Slots

A Summary

A.1 Status

V&V Scientist	Jen Lauer
V&V Date (YYYY-MM-DD)	2012.10.28
V&V Edition	1
V&V Disposition and Status	OK
V&V Charge Time	8.4611821314692

A.2 Comments