

V&V Reference Report

L2 ASCDS Version : 7.6.9

Observation 60929 - L2 Version 001
Chandra X-Ray Center

L2 Processing Date : Oct 13 2006

Contents

1	Front	2
2	OBI	3
2.1	OBI	3
2.1.1	Images	3
2.1.2	Bias	3
2.1.3	Parameters	4
2.1.4	Events	4
2.2	Compared Parameters	5
2.3	Aspect	6
2.4	Star Slots	8
2.5	FID Slots	8
A	Summary	9
A.1	Status	9
A.2	Comments	9

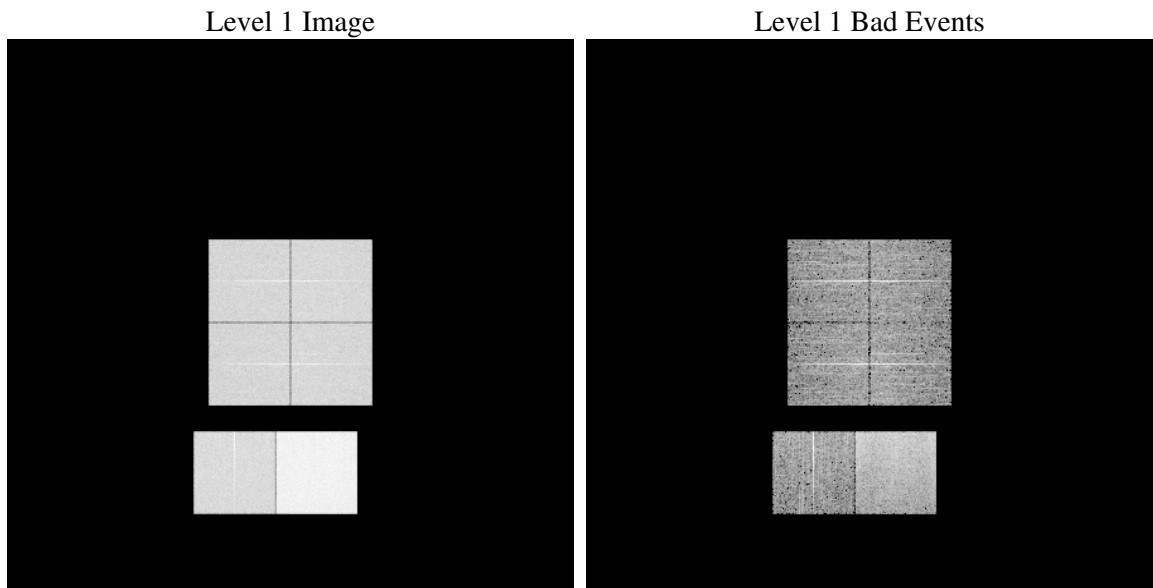
1 Front

seq_num	
obs_id	60929
title	ACIS-012367 diagnostics
observer	CHANDRA engineering request/realtime commanding
object	
dtcycle	0
cycle	P
ra_targ	0.0
dec_targ	0.0
ra_nom	194.00178253413
dec_nom	26.028532088096
roll_nom	53.927432671958
revision	2
ontime	8465.5852461457
livetime	8358.3889083956
ontime0	4271.8125241101
ontime1	4440.3858696818
ontime2	4126.0492087901
ontime3	4262.0079420805
ontime6	4576.5890883207
ontime7	8465.5852461457
l2events	1284036

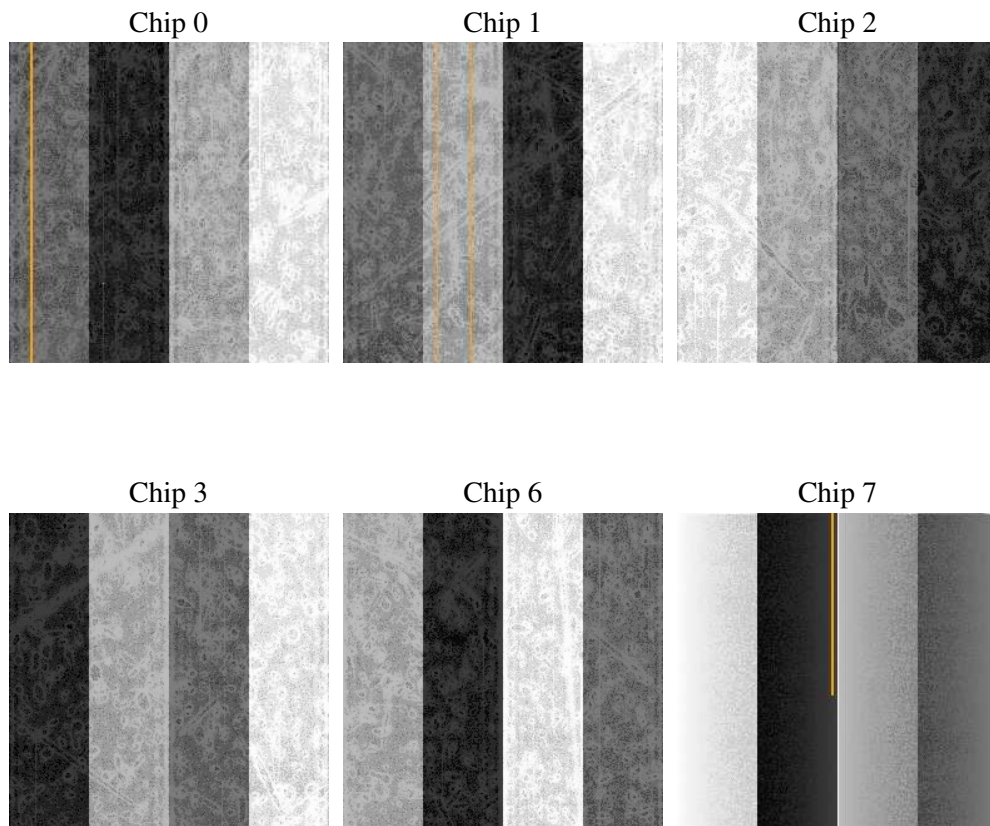
2 OBI

2.1 OBI

2.1.1 Images



2.1.2 Bias



2.1.3 Parameters

obi_num	0
ascdsver	7.6.9
caldbver	3.2.3
date	2006-10-14T00:17:38
revision	2

sched_exp_time	0.0
ontime	8468.7305730581
ontime0	4274.9168110192
ontime1	4443.4491165876
ontime2	4129.0714156926
ontime3	4265.1943089962
ontime6	4579.5702552497
ontime7	8468.7305730581
l1events	1550259

2.1.4 Events

	ccd 0	ccd 1	ccd 2	ccd 3	ccd 6	ccd 7
level 1 events	215845	223747	211483	218976	243008	437200
rejected events	28965	28833	29215	29821	31493	60105
rejected %	13%	12%	13%	13%	12%	13%

	ccd 0	ccd 1	ccd 2	ccd 3	ccd 6	ccd 7
grade 0 events	103072	107421	102552	106311	114958	68374
	47%	48%	48%	48%	47%	15%
grade 1 events	583	517	640	635	557	169
	0%	0%	0%	0%	0%	0%
grade 2 events	32416	34585	30890	32318	36443	113550
	15%	15%	14%	14%	14%	25%
grade 3 events	12153	12607	11836	12277	13299	27983
	5%	5%	5%	5%	5%	6%
grade 4 events	12073	12284	11605	12500	12965	27307
	5%	5%	5%	5%	5%	6%
grade 5 events	2050	2061	1935	2067	2344	7780
	0%	0%	0%	0%	0%	1%
grade 6 events	27291	28147	25524	25903	34015	140007
	12%	12%	12%	11%	13%	32%
grade 7 events	26207	26125	26501	26965	28427	52030
	12%	11%	12%	12%	11%	11%

2.2 Compared Parameters

Parameter	Planned	Actual	Parameter	Planned	Actual
Instrument	ACIS	ACIS	Obspar format version number	6	6
Detector	ACIS-012367	ACIS-012367	Obspar file type	PREDICTED	ACTUAL
Grating	NONE	NONE	Obspar update status	NONE	UPDATED
Data mode	FAINT	FAINT	On-chip summing requested	N	N
Observation mode	SECONDARY	SECONDARY	Subarray requested	NONE	NONE
Pointing RA	0	194.001782534133	Alternating exposures requested	N	N
Pointing Dec	0	26.02853208809604	Primary exposure time	0.000000	3.2
Pointing Roll	0.0	53.92743267195777			
SIM focus pos (mm)	-0.782348	-0.6828225247311905			
SIM defocus (mm)	0	0.8505141146731063			
SIM translation stage pos (mm)	-233.592463	250.466033080201			
SIM translation stage offset (mm)	0	-0.01005468664627074			
Observation start time	155379494.842359	155379493.81765			
Observation start date	2002-12-04T08:58:15	2002-12-04T08:58:13			
Observation end time	155401675.843284	155401674.81857			
Observation end date	2002-12-04T15:07:56	2002-12-04T15:07:54			
Read mode	TIMED	TIMED			

2.3 Aspect

2.4 Star Slots

2.5 FID Slots

A Summary

A.1 Status

V&V Scientist	Beth Sundheim
V&V Date (YYYY-MM-DD)	2006.10.15
V&V Edition	1
V&V Disposition and Status	OK
V&V Charge Time	8.46558524

A.2 Comments