

V&V Reference Report

L2 ASCDS Version : 8.4.5

Observation 60923 - L2 Version 3
Chandra X-Ray Center

L2 Processing Date : Oct 19 2012

Contents

1	Front	2
2	OBI	3
2.1	OBI	3
2.1.1	Images	3
2.1.2	Bias	3
2.1.3	Parameters	4
2.1.4	Events	4
2.2	Compared Parameters	5
2.3	Star Slots	6
2.4	FID Slots	6
A	Summary	7
A.1	Status	7
A.2	Comments	7

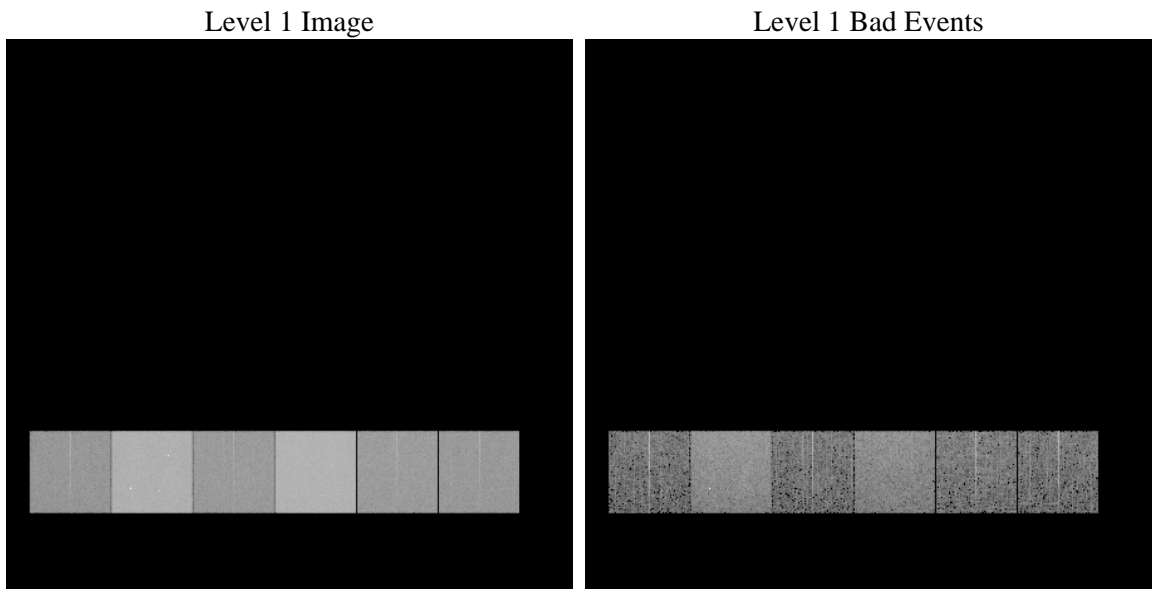
1 Front

seq_num	 	Sequence number
obs_id	60923	Observation id
title	ACIS-456789 diagnostics	Proposal title
observer	CHANDRA engineering request/realtime commanding	Principal investig
object	 	Source name
dtcycle	0	
cycle	P	events from which exps? Prim/Second/Both
ra_targ	0.0	Observer's specified target RA [deg]
dec_targ	0.0	Observer's specified target Dec [deg]
ra_nom	76.425315678876	Nominal RA [deg]
dec_nom	-0.086799967203588	Nominal Dec [deg]
roll_nom	354.67409897173	Nominal Roll [deg]
revision	3	Processing version of data
ontime	7791.8575962186	Sum of GTIs [s]
livetime	7693.1924036419	Livetime [s]
ontime4	2939.6185993552	Sum of GTIs [s]
ontime5	7791.8165562153	Sum of GTIs [s]
ontime6	3257.239133507	Sum of GTIs [s]
ontime7	7791.8575962186	Sum of GTIs [s]
ontime8	3322.0591962636	Sum of GTIs [s]
ontime9	3134.0795044005	Sum of GTIs [s]
l2events	1187747	Number of level 2 events

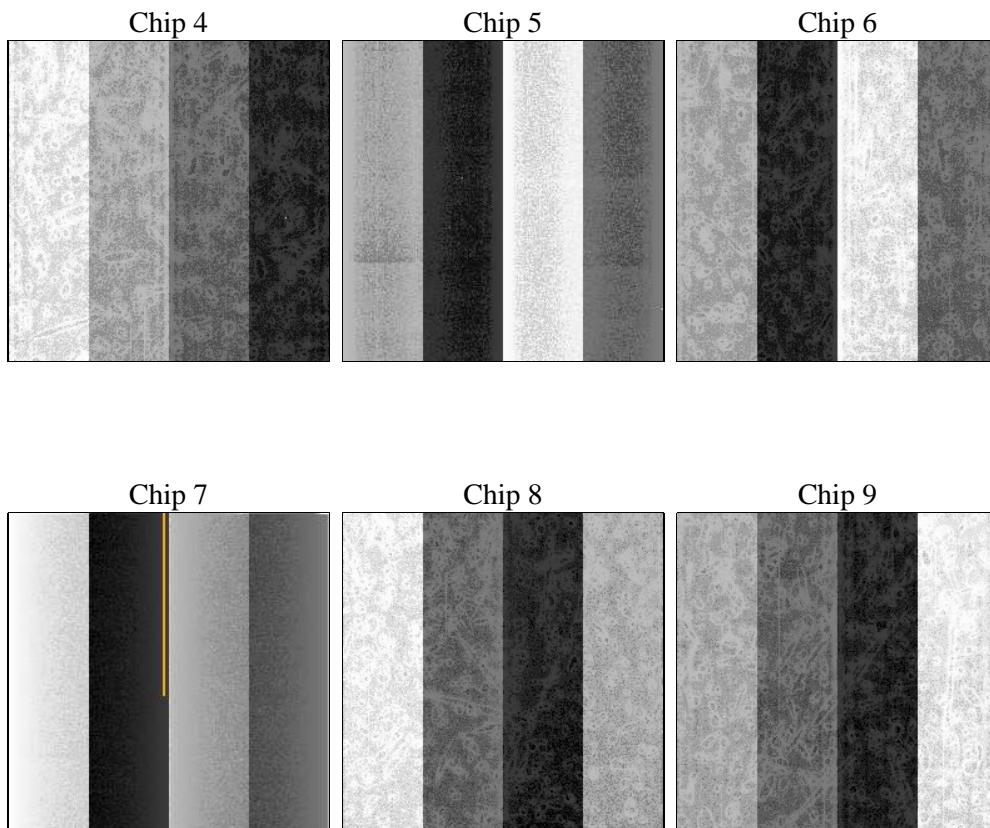
2 OBI

2.1 OBI

2.1.1 Images



2.1.2 Bias



2.1.3 Parameters

obi_num	0	Obi number	sched_exp_time	0.0	[s] Scheduled observation exposure time
ascdsver	8.4.5	Processing system revision	ontime	7791.8575962186	Sum of GTIs [s]
caldsver	4.5.2	 	ontime4	2939.6185993552	Sum of GTIs [s]
date	2012-10-19T09:28:21	Date and time of file creation	ontime5	7791.8165562153	Sum of GTIs [s]
revision	3	Processing version of data	ontime6	3257.239133507	Sum of GTIs [s]
			ontime7	7791.8575962186	Sum of GTIs [s]
			ontime8	3322.0591962636	Sum of GTIs [s]
			ontime9	3134.0795044005	Sum of GTIs [s]
			l1events	1426838	Number of level 1 events

2.1.4 Events

	ccd 4	ccd 5	ccd 6	ccd 7	ccd 8	ccd 9		ccd 4	ccd 5	ccd 6	ccd 7	ccd 8	ccd 9
level 1 events	147562	367268	172093	399876	178913	161126	grade 0 events	72925	74862	81619	91040	84356	76220
rejected events	21940	51208	22945	40625	25816	22600		49%	20%	47%	22%	47%	47%
rejected %	14%	13%	13%	10%	14%	14%	grade 1 events	503	284	378	237	410	454
								0%	0%	0%	0%	0%	0%
							grade 2 events	20108	113471	25854	79692	26727	23735
								13%	30%	15%	19%	14%	14%
							grade 3 events	8501	19990	9237	36460	9783	8923
								5%	5%	5%	9%	5%	5%
							grade 4 events	8153	19730	9151	36099	9796	8930
								5%	5%	5%	9%	5%	5%
							grade 5 events	1444	9278	1632	7894	1854	1687
								0%	2%	0%	1%	1%	1%
							grade 6 events	15935	88125	23287	116107	22435	20718
								10%	23%	13%	29%	12%	12%
							grade 7 events	19993	41528	20935	32347	23552	20459
								13%	11%	12%	8%	13%	12%

2.2 Compared Parameters

Parameter	Planned	Actual
Instrument	ACIS	ACIS
Detector	ACIS-456789	ACIS-456789
Grating	NONE	NONE
Data mode	FAINT	FAINT
Observation mode	SECONDARY	SECONDARY
[deg] Pointing RA	0	76.42531567887582
[deg] Pointing Dec	0	-0.08679996720358762
[deg] Pointing Roll	0.0	354.6740989717283
[mm] SIM focus pos	-0.684267	-1.428180813131781
[mm] SIM defocus	0	0.1051558262725154
[mm] SIM translation stage pos	-190.132523	250.466033080201
[mm] SIM translation stage offset	0	-0.01005468664627074
[s] Observation start time (MET)	156030205.869521	156030204.84479
Observation start date	2002-12-11T21:43:26	2002-12-11T21:43:24
[s] Observation end time (MET)	156040792.069964	156040791.04524
Observation end date	2002-12-12T00:39:52	2002-12-12T00:39:51
Read mode	TIMED	TIMED

Parameter	Planned	Actual
Obspar format version number	7	7
Obspar file type	PREDICTED	ACTUAL
Obspar update status	NONE	UPDATED
On-chip summing requested	N	N
Subarray requested	NONE	NONE
Alternating exposures requested	N	N
[s] Primary exposure time	0.000000	3.2

2.3 Star Slots

2.4 FID Slots

A Summary

A.1 Status

V&V Scientist	Beth Sundheim
V&V Date (YYYY-MM-DD)	2012.11.19
V&V Edition	1
V&V Disposition and Status	OK
V&V Charge Time	7.7918575962186

A.2 Comments