

# V&V Reference Report

## L2 ASCDS Version : 7.6.9

Observation 61790 - L2 Version 001  
Chandra X-Ray Center

L2 Processing Date : Nov 2 2006

## Contents

<b>1</b>	<b>Front</b>	<b>2</b>
<b>2</b>	<b>OBI</b>	<b>3</b>
2.1	OBI . . . . .	3
2.1.1	Images . . . . .	3
2.1.2	Bias . . . . .	3
2.1.3	Parameters . . . . .	4
2.1.4	Events . . . . .	4
2.2	Compared Parameters . . . . .	5
2.3	Aspect . . . . .	6
2.4	Star Slots . . . . .	8
2.5	FID Slots . . . . .	8
<b>A</b>	<b>Summary</b>	<b>9</b>
A.1	Status . . . . .	9
A.2	Comments . . . . .	9

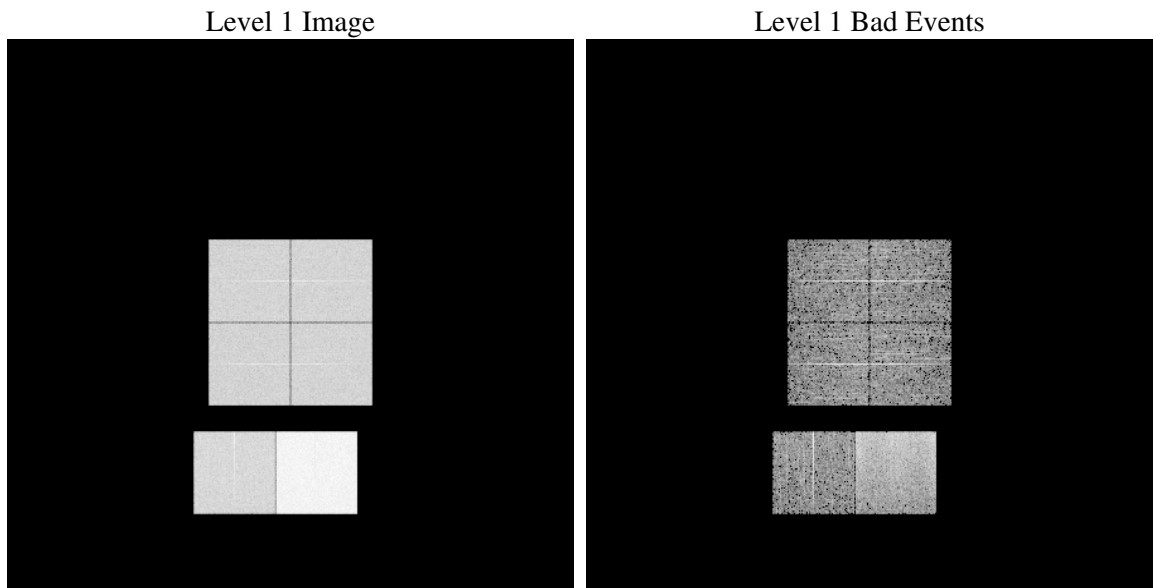
# 1 Front

seq_num	&#160
obs_id	61790
title	ACIS-012367 diagnostics
observer	CHANDRA engineering request/realtime commanding
object	&#160
dtcycle	0
cycle	P
ra_targ	0.0
dec_targ	0.0
ra_nom	92.632283382459
dec_nom	-30.592827148063
roll_nom	341.88568432487
revision	3
ontime	5721.840145722
livetime	5649.3867605184
ontime0	2490.6110851616
ontime1	2467.9649448842
ontime2	2351.3287445456
ontime3	2412.7444341183
ontime6	2620.3753562421
ontime7	5721.840145722
l2events	1239537

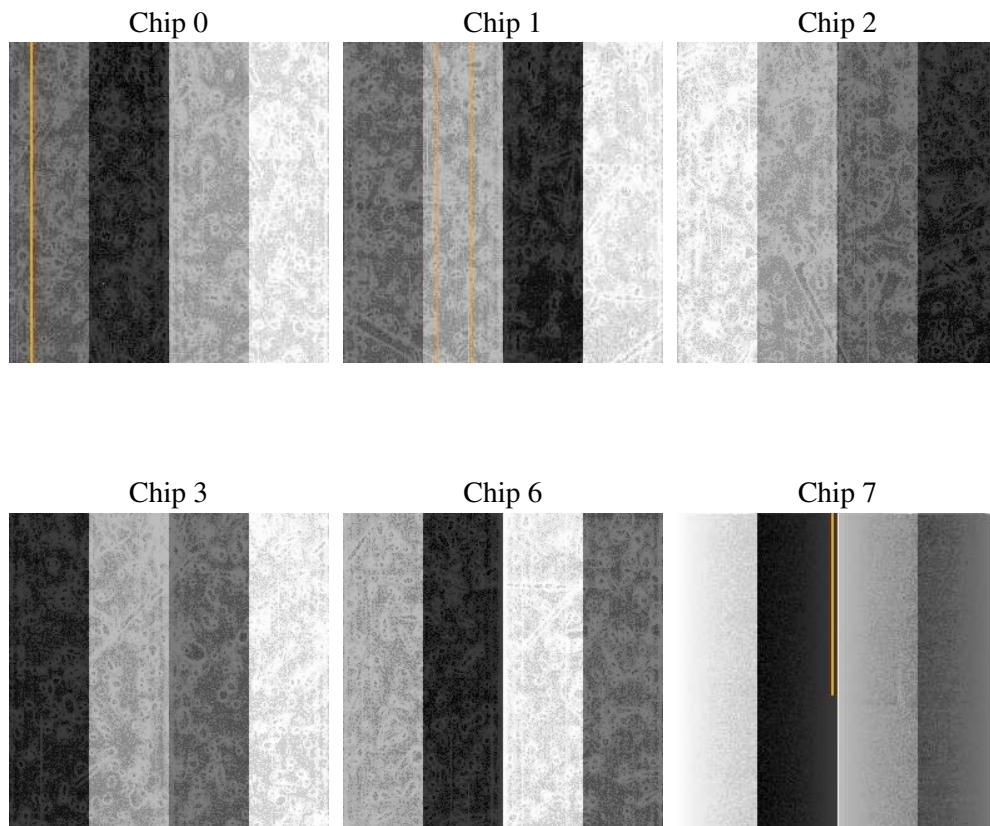
## 2 OBI

### 2.1 OBI

#### 2.1.1 Images



#### 2.1.2 Bias



### 2.1.3 Parameters

obi_num	0
ascdsver	7.6.9
caldbver	3.2.3
date	2006-11-03T00:35:37
revision	3

sched_exp_time	0.0
ontime	5723.6273716986
ontime0	2492.3572711349
ontime1	2469.6700908691
ontime2	2352.9928505272
ontime3	2414.5727000982
ontime6	2621.9984222203
ontime7	5723.6273716986
l1events	1430232

### 2.1.4 Events

	ccd 0	ccd 1	ccd 2	ccd 3	ccd 6	ccd 7
level 1 events	193725	193923	188219	191728	215845	446792
rejected events	18199	18807	18841	18804	20302	42203
rejected %	9%	9%	10%	9%	9%	9%

	ccd 0	ccd 1	ccd 2	ccd 3	ccd 6	ccd 7
grade 0 events	97081	96963	94523	97062	106649	76494
	50%	50%	50%	50%	49%	17%
grade 1 events	489	445	465	530	473	201
	0%	0%	0%	0%	0%	0%
grade 2 events	30973	31153	29889	30340	33971	121148
	15%	16%	15%	15%	15%	27%
grade 3 events	11079	10987	10614	11019	12064	31047
	5%	5%	5%	5%	5%	6%
grade 4 events	11253	10946	10754	10942	12048	30431
	5%	5%	5%	5%	5%	6%
grade 5 events	1394	1406	1311	1345	1650	6275
	0%	0%	0%	0%	0%	1%
grade 6 events	25375	25288	23830	23794	31061	145703
	13%	13%	12%	12%	14%	32%
grade 7 events	16081	16735	16833	16696	17929	35493
	8%	8%	8%	8%	8%	7%

## 2.2 Compared Parameters

Parameter	Planned	Actual	Parameter	Planned	Actual
Instrument	ACIS	ACIS	Obspar format version number	6	6
Detector	ACIS-012367	ACIS-012367	Obspar file type	PREDICTED	ACTUAL
Grating	NONE	NONE	Obspar update status	NONE	UPDATED
Data mode	FAINT	FAINT	On-chip summing requested	N	N
Observation mode	SECONDARY	SECONDARY	Subarray requested	NONE	NONE
Pointing RA	0	92.6322833824586	Alternating exposures requested	N	N
Pointing Dec	0	-30.59282714806329	Primary exposure time	3.2	3.2
Pointing Roll	0.0	341.8856843248743			
SIM focus pos (mm)	-0.782348	-0.7809083437167272			
SIM defocus (mm)	0	0.7524282956875696			
SIM translation stage pos (mm)	-233.592463	250.466033080201			
SIM translation stage offset (mm)	0	-0.01005468664627074			
Observation start time	95256307.028777	95256306.26031201			
Observation start date	2001-01-07T12:05:07	2001-01-07T12:05:06			
Observation end time	95269051.87926599	95269051.1108			
Observation end date	2001-01-07T15:37:32	2001-01-07T15:37:31			
Read mode	TIMED	TIMED			

## 2.3 Aspect



## **2.4 Star Slots**

## **2.5 FID Slots**



## A Summary

### A.1 Status

V&V Scientist	Doug Morgan
V&V Date (YYYY-MM-DD)	2006.11.03
V&V Edition	1
V&V Disposition and Status	OK
V&V Charge Time	5.72184014

### A.2 Comments