

# V&V Reference Report

## L2 ASCDS Version : 7.6.9

Observation 61755 - L2 Version 001  
Chandra X-Ray Center

L2 Processing Date : Nov 6 2006

## Contents

<b>1</b>	<b>Front</b>	<b>2</b>
<b>2</b>	<b>OBI</b>	<b>3</b>
2.1	OBI . . . . .	3
2.1.1	Images . . . . .	3
2.1.2	Bias . . . . .	3
2.1.3	Parameters . . . . .	4
2.1.4	Events . . . . .	4
2.2	Compared Parameters . . . . .	5
2.3	Aspect . . . . .	6
2.4	Star Slots . . . . .	8
2.5	FID Slots . . . . .	8
<b>A</b>	<b>Summary</b>	<b>9</b>
A.1	Status . . . . .	9
A.2	Comments . . . . .	9

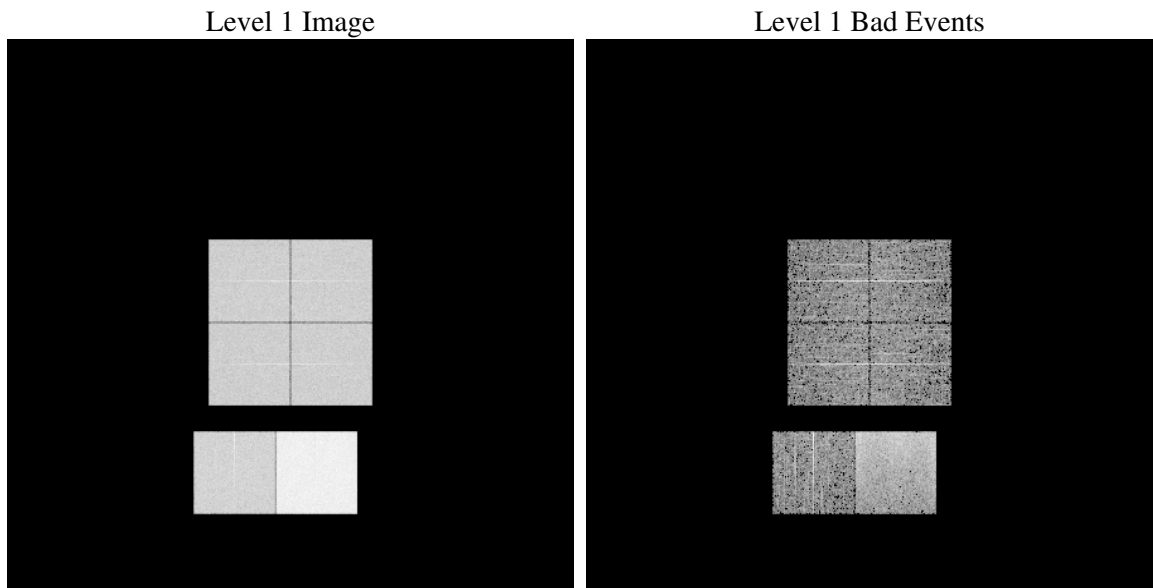
# 1 Front

seq_num	&#160
obs_id	61755
title	ACIS-012367 diagnostics
observer	CHANDRA engineering request/realtime commanding
object	&#160
dtcycle	0
cycle	P
ra_targ	0.0
dec_targ	0.0
ra_nom	355.16615226001
dec_nom	38.574976189771
roll_nom	317.3343610091
revision	3
ontime	5883.8488631099
livetime	5809.3440259768
ontime0	2516.5018556267
ontime1	2513.3015966117
ontime2	2408.0324254632
ontime3	2433.9604563266
ontime6	2659.2296487987
ontime7	5883.8488631099
l2events	1236643

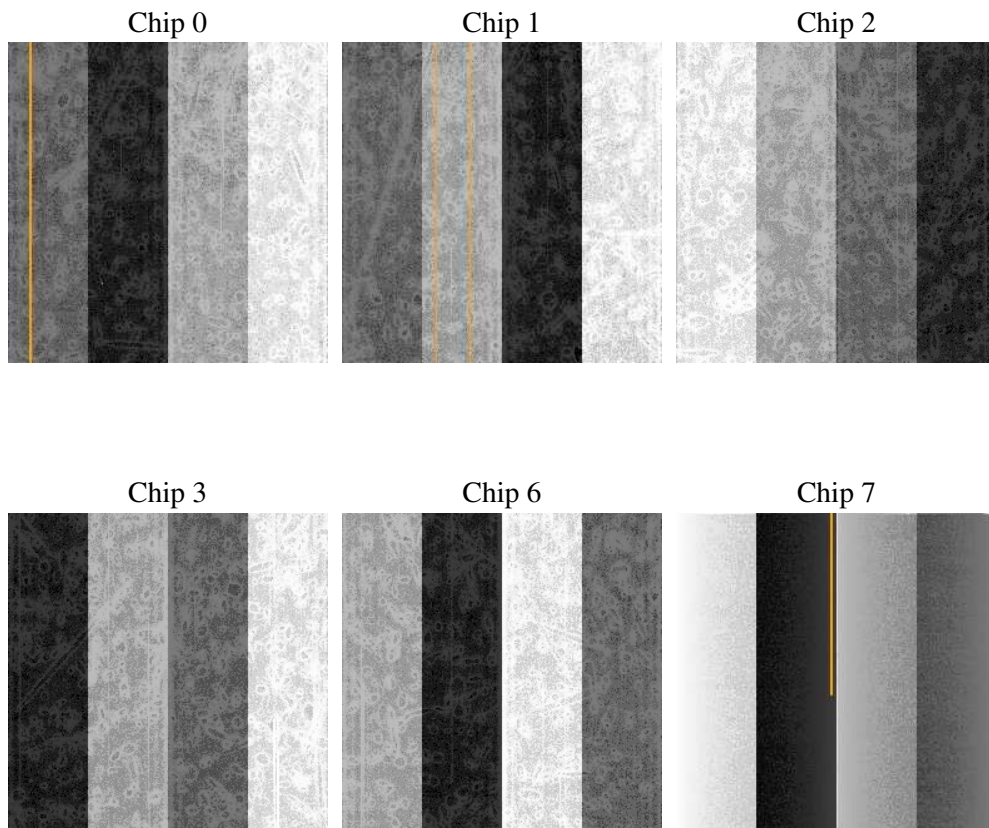
## 2 OBI

### 2.1 OBI

#### 2.1.1 Images



#### 2.1.2 Bias



### 2.1.3 Parameters

obi_num	0
ascdsver	7.6.9
caldbver	3.2.3
date	2006-11-06T10:51:02
revision	3

sched_exp_time	0.0
ontime	5885.674077481
ontime0	2518.2860299945
ontime1	2515.0447309911
ontime2	2411.331560865
ontime3	2437.2595917284
ontime6	2660.8907031715
ontime7	5885.674077481
l1events	1426697

### 2.1.4 Events

	ccd 0	ccd 1	ccd 2	ccd 3	ccd 6	ccd 7
level 1 events	192279	192806	187306	190228	214657	449421
rejected events	18064	18702	18510	19209	19881	42764
rejected %	9%	9%	9%	10%	9%	9%

	ccd 0	ccd 1	ccd 2	ccd 3	ccd 6	ccd 7
grade 0 events	96255	96180	94245	95915	106326	78366
	50%	49%	50%	50%	49%	17%
grade 1 events	516	490	465	493	507	200
	0%	0%	0%	0%	0%	0%
grade 2 events	30815	30778	29462	30194	33685	120629
	16%	15%	15%	15%	15%	26%
grade 3 events	11071	10934	10647	10832	12048	31342
	5%	5%	5%	5%	5%	6%
grade 4 events	11095	10946	10752	10752	12103	31172
	5%	5%	5%	5%	5%	6%
grade 5 events	1385	1454	1306	1373	1564	6322
	0%	0%	0%	0%	0%	1%
grade 6 events	25214	25479	23918	23555	30861	145374
	13%	13%	12%	12%	14%	32%
grade 7 events	15928	16545	16511	17114	17563	36016
	8%	8%	8%	8%	8%	8%

## 2.2 Compared Parameters

Parameter	Planned	Actual	Parameter	Planned	Actual
Instrument	ACIS	ACIS	Obspar format version number	6	6
Detector	ACIS-012367	ACIS-012367	Obspar file type	PREDICTED	ACTUAL
Grating	NONE	NONE	Obspar update status	NONE	UPDATED
Data mode	FAINT	FAINT	On-chip summing requested	N	N
Observation mode	SECONDARY	SECONDARY	Subarray requested	NONE	NONE
Pointing RA	0	355.1661522600053	Alternating exposures requested	N	N
Pointing Dec	0	38.57497618977058	Primary exposure time	0.000000	3.2
Pointing Roll	0.0	317.3343610091035			
SIM focus pos (mm)	-0.782348	-0.6828225247311905			
SIM defocus (mm)	0	0.8505141146731063			
SIM translation stage pos (mm)	-233.592463	250.466033080201			
SIM translation stage offset (mm)	0	-0.01005468664627074			
Observation start time	97312612.90800001	97312612.13933399			
Observation start date	2001-01-31T07:16:53	2001-01-31T07:16:52			
Observation end time	97350460.009	97350459.24079099			
Observation end date	2001-01-31T17:47:40	2001-01-31T17:47:39			
Read mode	TIMED	TIMED			

## 2.3 Aspect



## **2.4 Star Slots**

## **2.5 FID Slots**



## A Summary

### A.1 Status

V&V Scientist	Jen Lauer
V&V Date (YYYY-MM-DD)	2006.11.06
V&V Edition	1
V&V Disposition and Status	OK
V&V Charge Time	5.88384886

### A.2 Comments

The ACIS focal plane temperature was above calibration limits for the last 4 ksec of the observation.