

V&V Reference Report

L2 ASCDS Version : 7.6.9

Observation 61740 - L2 Version 001
Chandra X-Ray Center

L2 Processing Date : Nov 6 2006

Contents

1	Front	2
2	OBI	3
2.1	OBI	3
2.1.1	Images	3
2.1.2	Bias	3
2.1.3	Parameters	4
2.1.4	Events	4
2.2	Compared Parameters	5
2.3	Aspect	6
2.4	Star Slots	8
2.5	FID Slots	8
A	Summary	9
A.1	Status	9
A.2	Comments	9

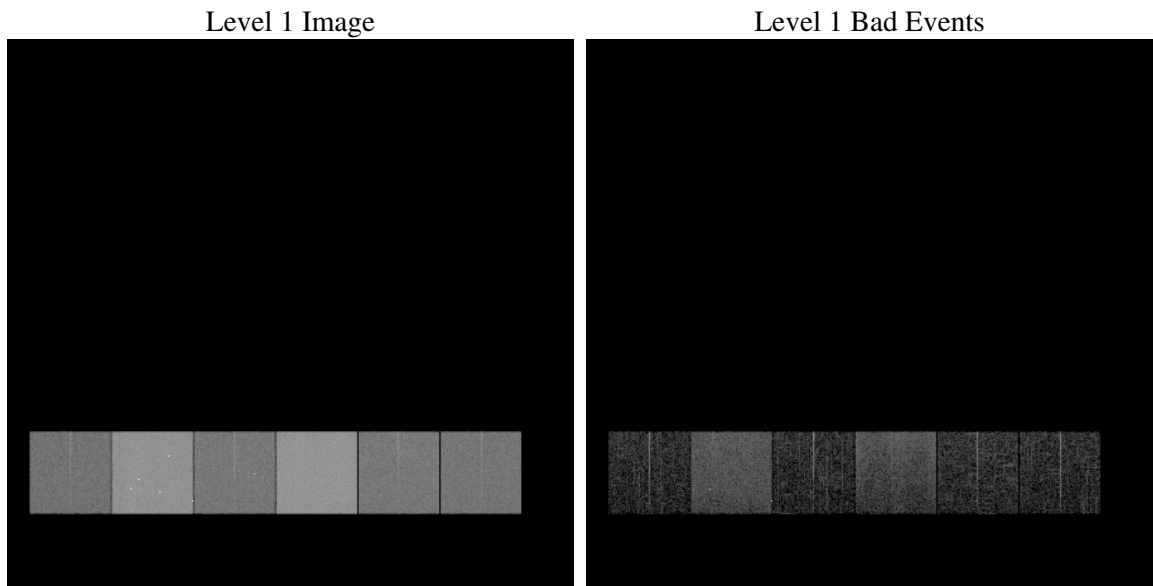
1 Front

seq_num	
obs_id	61740
title	ACIS-456789 diagnostics
observer	CHANDRA engineering request/realtime commanding
object	
dtcycle	0
cycle	P
ra_targ	0.0
dec_targ	0.0
ra_nom	260.99438639869
dec_nom	60.028546454316
roll_nom	62.995737763908
revision	3
ontime	4983.219234556
livetime	4920.1187120736
ontime4	2037.2662766129
ontime5	5281.4288470298
ontime6	2231.6875862777
ontime7	4983.219234556
ontime8	2244.7338262498
ontime9	2150.5383069813
l2events	1211332

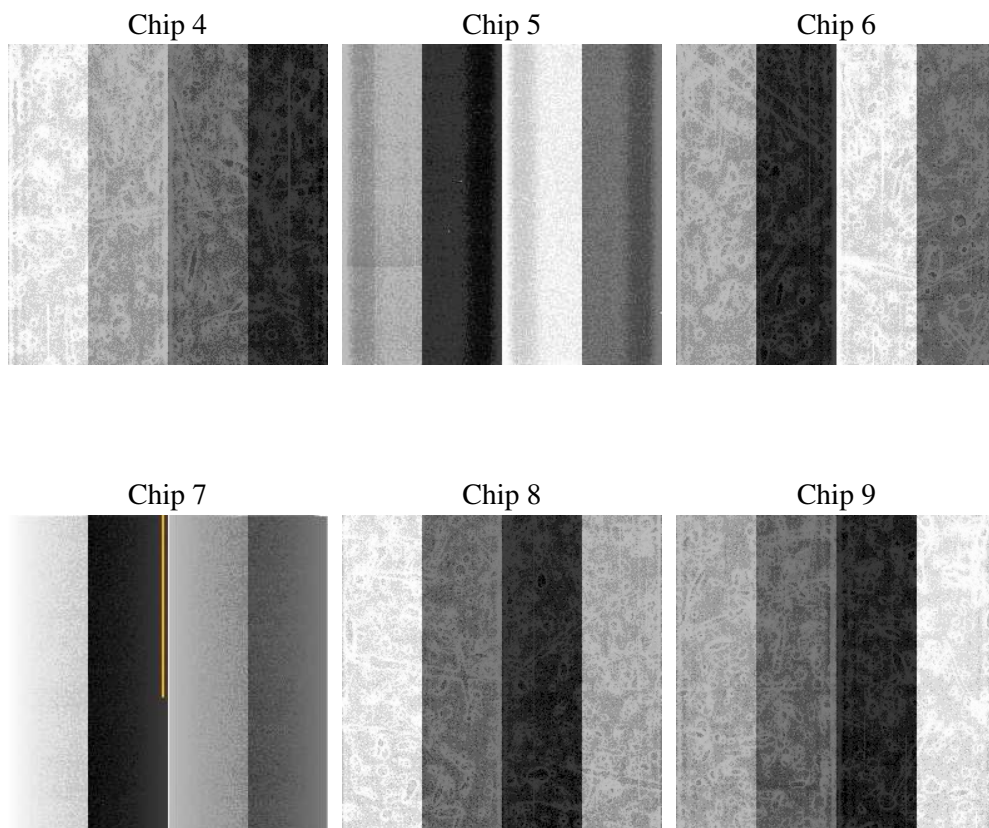
2 OBI

2.1 OBI

2.1.1 Images



2.1.2 Bias



2.1.3 Parameters

obi_num	0
ascdsver	7.6.9
caldsver	3.2.3
date	2006-11-06T20:57:19
revision	3

sched_exp_time	0.0
ontime	4984.6884387434
ontime4	2038.6123608053
ontime5	5282.8570112139
ontime6	2233.0747104734
ontime7	4984.6884387434
ontime8	2246.0388704389
ontime9	2152.048551172
l1events	1425986

2.1.4 Events

	ccd 4	ccd 5	ccd 6	ccd 7	ccd 8	ccd 9
level 1 events	152851	368351	178548	379034	180889	166313
rejected events	16848	49443	17009	36937	18682	16651
rejected %	11%	13%	9%	9%	10%	10%

	ccd 4	ccd 5	ccd 6	ccd 7	ccd 8	ccd 9
grade 0 events	77200	39101	88555	63824	89515	82080
	50%	10%	49%	16%	49%	49%
grade 1 events	402	154	432	136	433	388
	0%	0%	0%	0%	0%	0%
grade 2 events	23850	154060	27898	102888	28810	26427
	15%	41%	15%	27%	15%	15%
grade 3 events	8367	10355	9940	26054	10073	9224
	5%	2%	5%	6%	5%	5%
grade 4 events	8152	9917	9832	25449	10123	9146
	5%	2%	5%	6%	5%	5%
grade 5 events	1178	6253	1366	5408	1416	1344
	0%	1%	0%	1%	0%	0%
grade 6 events	18434	105475	25314	123882	23686	22785
	12%	28%	14%	32%	13%	13%
grade 7 events	15268	43036	15211	31393	16833	14919
	9%	11%	8%	8%	9%	8%

2.2 Compared Parameters

Parameter	Planned	Actual	Parameter	Planned	Actual
Instrument	ACIS	ACIS	Obspar format version number	6	6
Detector	ACIS-456789	ACIS-456789	Obspar file type	PREDICTED	ACTUAL
Grating	NONE	NONE	Obspar update status	NONE	UPDATED
Data mode	FAINT	FAINT	On-chip summing requested	N	N
Observation mode	SECONDARY	SECONDARY	Subarray requested	NONE	NONE
Pointing RA	0	260.9943863986902	Alternating exposures requested	N	N
Pointing Dec	0	60.02854645431623	Primary exposure time	3.2	3.2
Pointing Roll	0.0	62.99573776390783			
SIM focus pos (mm)	-0.684267	-0.7809083437167272			
SIM defocus (mm)	0	0.7524282956875696			
SIM translation stage pos (mm)	-190.132523	250.466033080201			
SIM translation stage offset (mm)	0	-0.01005468664627074			
Observation start time	98455703.20183501	98455702.433369			
Observation start date	2001-02-13T12:48:23	2001-02-13T12:48:22			
Observation end time	98467232.402279	98467231.63381299			
Observation end date	2001-02-13T16:00:32	2001-02-13T16:00:31			
Read mode	TIMED	TIMED			

2.3 Aspect

2.4 Star Slots

2.5 FID Slots

A Summary

A.1 Status

V&V Scientist	Jen Lauer
V&V Date (YYYY-MM-DD)	2006.11.07
V&V Edition	1
V&V Disposition and Status	OK
V&V Charge Time	4.98321923

A.2 Comments

The ACIS focal plane temperature was above calibration limits for the entire observation.