

V&V Reference Report

L2 ASCDS Version : 7.6.9

Observation 61731 - L2 Version 001
Chandra X-Ray Center

L2 Processing Date : Nov 8 2006

Contents

1	Front	2
2	OBI	3
2.1	OBI	3
2.1.1	Images	3
2.1.2	Bias	3
2.1.3	Parameters	4
2.1.4	Events	4
2.2	Compared Parameters	5
2.3	Aspect	6
2.4	Star Slots	8
2.5	FID Slots	8
A	Summary	9
A.1	Status	9
A.2	Comments	9

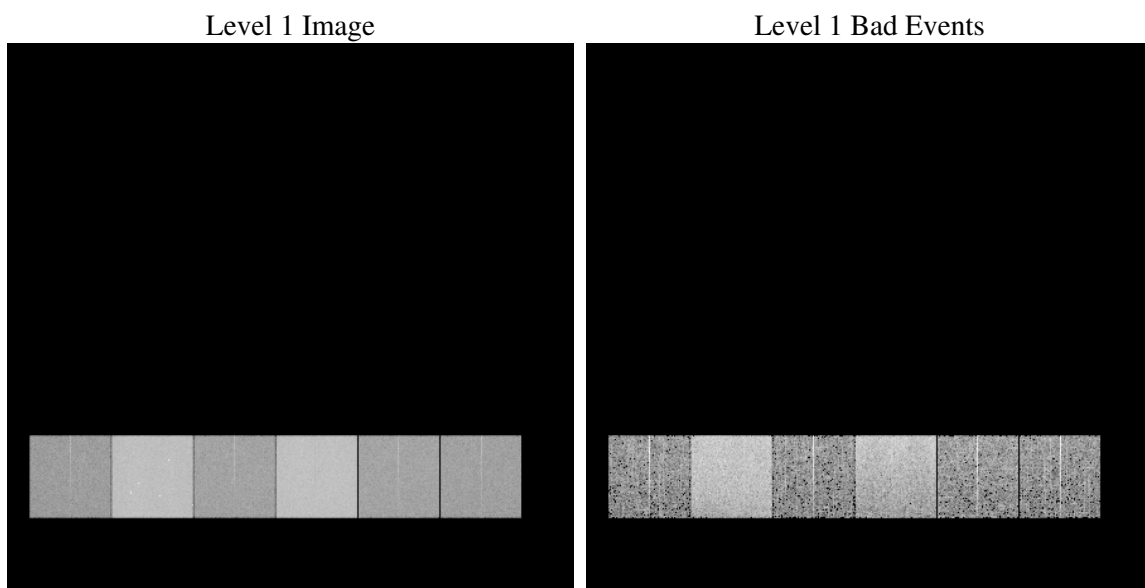
1 Front

seq_num	
obs_id	61731
title	ACIS-456789 diagnostics
observer	CHANDRA engineering request/realtime commanding
object	
dtcycle	0
cycle	P
ra_targ	0.0
dec_targ	0.0
ra_nom	46.790378371724
dec_nom	54.073807883853
roll_nom	289.46140527195
revision	2
ontime	5427.5916619897
livetime	5358.8642282622
ontime4	2144.5763317794
ontime5	5842.4749444723
ontime6	2387.3631919473
ontime7	5427.5916619897
ontime8	2410.3824915588
ontime9	2296.7410613894
l2events	1310284

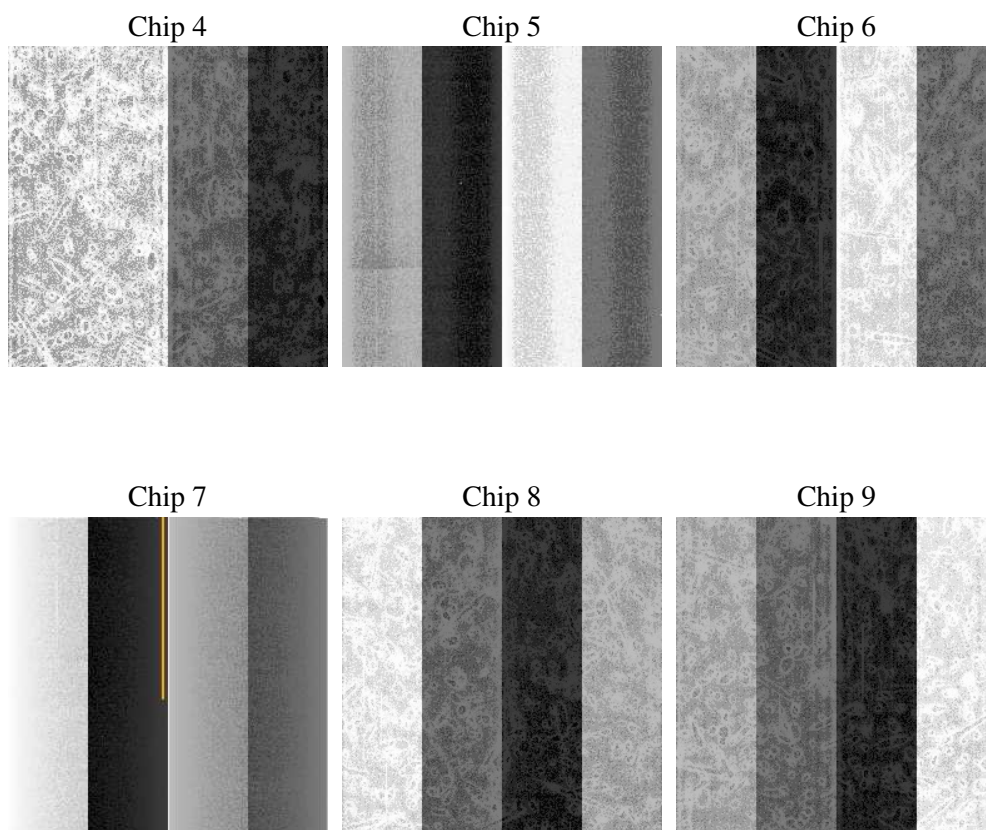
2 OBI

2.1 OBI

2.1.1 Images



2.1.2 Bias



2.1.3 Parameters

obi_num	0
ascdsver	7.6.9
caldsver	3.2.3
date	2006-11-09T00:39:12
revision	2

sched_exp_time	0.0
ontime	5461.1151211709
ontime4	2158.5306702554
ontime5	5879.19837372
ontime6	2401.6084502935
ontime7	5461.1151211709
ontime8	2430.7778700143
ontime9	2314.1005998552
l1events	1546563

2.1.4 Events

	ccd 4	ccd 5	ccd 6	ccd 7	ccd 8	ccd 9
level 1 events	162682	403237	191408	415472	195531	178233
rejected events	19776	54493	19698	42914	21808	19806
rejected %	12%	13%	10%	10%	11%	11%

	ccd 4	ccd 5	ccd 6	ccd 7	ccd 8	ccd 9
grade 0 events	81644	44564	94319	71006	96663	87770
	50%	11%	49%	17%	49%	49%
grade 1 events	439	138	475	186	433	441
	0%	0%	0%	0%	0%	0%
grade 2 events	25040	167608	29511	110975	30787	27890
	15%	41%	15%	26%	15%	15%
grade 3 events	8856	12267	10609	29137	10962	9815
	5%	3%	5%	7%	5%	5%
grade 4 events	8838	12071	10876	28771	11060	9785
	5%	2%	5%	6%	5%	5%
grade 5 events	1304	6298	1515	6027	1649	1450
	0%	1%	0%	1%	0%	0%
grade 6 events	19411	114365	27360	134837	25606	24233
	11%	28%	14%	32%	13%	13%
grade 7 events	17150	45926	16743	34533	18371	16849
	10%	11%	8%	8%	9%	9%

2.2 Compared Parameters

Parameter	Planned	Actual	Parameter	Planned	Actual
Instrument	ACIS	ACIS	Obspar format version number	6	6
Detector	ACIS-456789	ACIS-456789	Obspar file type	PREDICTED	ACTUAL
Grating	NONE	NONE	Obspar update status	NONE	UPDATED
Data mode	FAINT	FAINT	On-chip summing requested	N	N
Observation mode	SECONDARY	SECONDARY	Subarray requested	NONE	NONE
Pointing RA	0	46.79037837172358	Alternating exposures requested	N	N
Pointing Dec	0	54.07380788385272	Primary exposure time	0.000000	3.2
Pointing Roll	0.0	289.4614052719533			
SIM focus pos (mm)	-0.684267	-0.7809083437167272			
SIM defocus (mm)	0	0.7524282956875696			
SIM translation stage pos (mm)	-190.132523	250.466033080201			
SIM translation stage offset (mm)	0	-0.01005468664627074			
Observation start time	98924644.81999999	98924644.051447			
Observation start date	2001-02-18T23:04:05	2001-02-18T23:04:04			
Observation end time	98966333.62100001	98966332.853055			
Observation end date	2001-02-19T10:38:54	2001-02-19T10:38:52			
Read mode	TIMED	TIMED			

2.3 Aspect

2.4 Star Slots

2.5 FID Slots

A Summary

A.1 Status

V&V Scientist	Jen Lauer
V&V Date (YYYY-MM-DD)	2006.11.09
V&V Edition	1
V&V Disposition and Status	OK
V&V Charge Time	5.42759166

A.2 Comments