

V&V Reference Report

L2 ASCDS Version : 8.4.5

Observation 61729 - L2 Version 3
Chandra X-Ray Center

L2 Processing Date : Sep 12 2012

Contents

1	Front	2
2	OBI	3
2.1	OBI	3
2.1.1	Images	3
2.1.2	Bias	3
2.1.3	Parameters	4
2.1.4	Events	4
2.2	Compared Parameters	5
2.3	Star Slots	6
2.4	FID Slots	6
A	Summary	7
A.1	Status	7
A.2	Comments	7

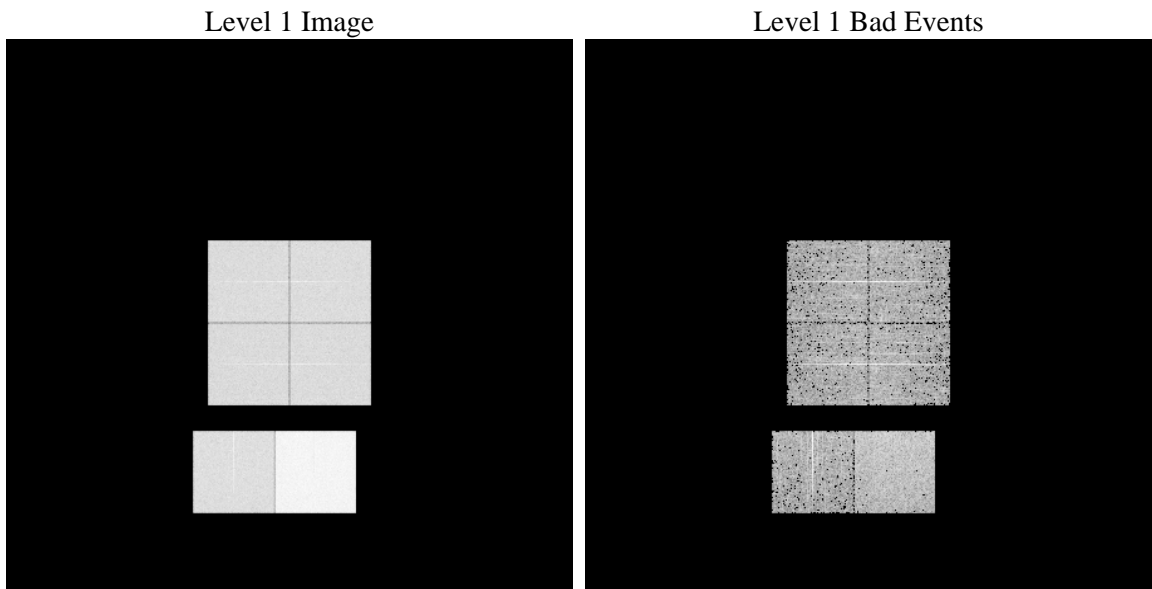
1 Front

seq_num	 	Sequence number
obs_id	61729	Observation id
title	ACIS-012367 diagnostics	Proposal title
observer	CHANDRA engineering request/realtime commanding	Principal investig
object	 	Source name
dtcycle	0	
cycle	P	events from which exps? Prim/Second/Both
ra_targ	0.0	Observer's specified target RA [deg]
dec_targ	0.0	Observer's specified target Dec [deg]
ra_nom	181.01370780418	Nominal RA [deg]
dec_nom	-33.97366121161	Nominal Dec [deg]
roll_nom	34.024930135226	Nominal Roll [deg]
revision	3	Processing version of data
ontime	6002.5348525792	Sum of GTIs [s]
livetime	5926.5271419833	Livetime [s]
ontime0	2521.7120359242	Sum of GTIs [s]
ontime1	2563.8452268988	Sum of GTIs [s]
ontime2	2372.6244455129	Sum of GTIs [s]
ontime3	2417.9989355803	Sum of GTIs [s]
ontime6	2631.9067875594	Sum of GTIs [s]
ontime7	6002.5348525792	Sum of GTIs [s]
l2events	1242342	Number of level 2 events

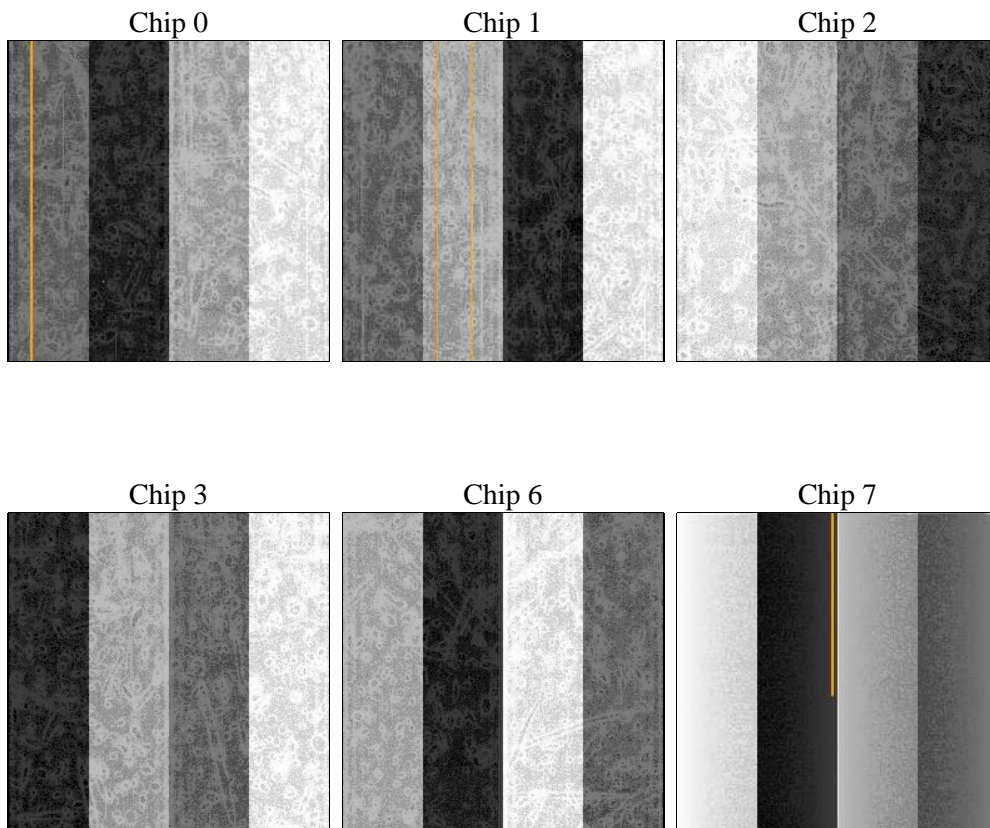
2 OBI

2.1 OBI

2.1.1 Images



2.1.2 Bias



2.1.3 Parameters

obi_num	0	Obi number	sched_exp_time	0.0	[s] Scheduled observation exposure time
ascdsver	8.4.5	Processing system revision	ontime	6002.5348525792	Sum of GTIs [s]
caldsver	4.5.1.1	 	ontime0	2521.7120359242	Sum of GTIs [s]
date	2012-09-12T08:56:50	Date and time of file creation	ontime1	2563.8452268988	Sum of GTIs [s]
revision	3	Processing version of data	ontime2	2372.6244455129	Sum of GTIs [s]
			ontime3	2417.9989355803	Sum of GTIs [s]
			ontime6	2631.9067875594	Sum of GTIs [s]
			ontime7	6002.5348525792	Sum of GTIs [s]
			l1events	1423204	Number of level 1 events

2.1.4 Events

	ccd 0	ccd 1	ccd 2	ccd 3	ccd 6	ccd 7		ccd 0	ccd 1	ccd 2	ccd 3	ccd 6	ccd 7
level 1 events	191215	195493	183470	187341	210009	455676	grade 0 events	95520	97487	91707	93889	103625	109695
rejected events	18824	19195	18953	19820	20277	31021		49%	49%	49%	50%	49%	24%
rejected %	9%	9%	10%	10%	9%	6%	grade 1 events	539	471	476	514	518	291
								0%	0%	0%	0%	0%	0%
							grade 2 events	30384	31246	28799	29088	32610	94745
								15%	15%	15%	15%	15%	20%
							grade 3 events	11000	11022	10230	10699	11694	43397
								5%	5%	5%	5%	5%	9%
							grade 4 events	10880	11194	10486	10720	11761	43091
								5%	5%	5%	5%	5%	9%
							grade 5 events	1440	1404	1288	1374	1651	6763
								0%	0%	0%	0%	0%	1%
							grade 6 events	24829	25593	23513	23371	30263	133961
								12%	13%	12%	12%	14%	29%
							grade 7 events	16623	17076	16971	17686	17887	23733
								8%	8%	9%	9%	8%	5%

2.2 Compared Parameters

Parameter	Planned	Actual	Parameter	Planned	Actual
Instrument	ACIS	ACIS	Obspar format version number	7	7
Detector	ACIS-012367	ACIS-012367	Obspar file type	PREDICTED	ACTUAL
Grating	NONE	NONE	Obspar update status	NONE	UPDATED
Data mode	FAINT	FAINT	On-chip summing requested	N	N
Observation mode	SECONDARY	SECONDARY	Subarray requested	NONE	NONE
[deg] Pointing RA	0	181.0137078041831	Alternating exposures requested	N	N
[deg] Pointing Dec	0	-33.97366121160971	[s] Primary exposure time	0.000000	3.2
[deg] Pointing Roll	0.0	34.02493013522642			
[mm] SIM focus pos	-0.782348	-0.6828225247311905			
[mm] SIM defocus	0	0.8505141146731063			
[mm] SIM translation stage pos	-233.592463	250.466033080201			
[mm] SIM translation stage offset	0	-0.01005468664627074			
[s] Observation start time (MET)	99140741.478	99140740.709782			
Observation start date	2001-02-21T11:05:41	2001-02-21T11:05:40			
[s] Observation end time (MET)	99152586.37899999	99152585.610239			
Observation end date	2001-02-21T14:23:06	2001-02-21T14:23:05			
Read mode	TIMED	TIMED			

2.3 Star Slots

2.4 FID Slots

A Summary

A.1 Status

V&V Scientist	Jen Lauer
V&V Date (YYYY-MM-DD)	2012.09.18
V&V Edition	1
V&V Disposition and Status	OK
V&V Charge Time	6.0025348525792

A.2 Comments