

V&V Reference Report

L2 ASCDS Version : 7.6.9

Observation 61729 - L2 Version 001
Chandra X-Ray Center

L2 Processing Date : Nov 8 2006

Contents

| | | |
|----------|-------------------------------|----------|
| 1 | Front | 2 |
| 2 | OBI | 3 |
| 2.1 | OBI | 3 |
| 2.1.1 | Images | 3 |
| 2.1.2 | Bias | 3 |
| 2.1.3 | Parameters | 4 |
| 2.1.4 | Events | 4 |
| 2.2 | Compared Parameters | 5 |
| 2.3 | Aspect | 6 |
| 2.4 | Star Slots | 8 |
| 2.5 | FID Slots | 8 |
| A | Summary | 9 |
| A.1 | Status | 9 |
| A.2 | Comments | 9 |

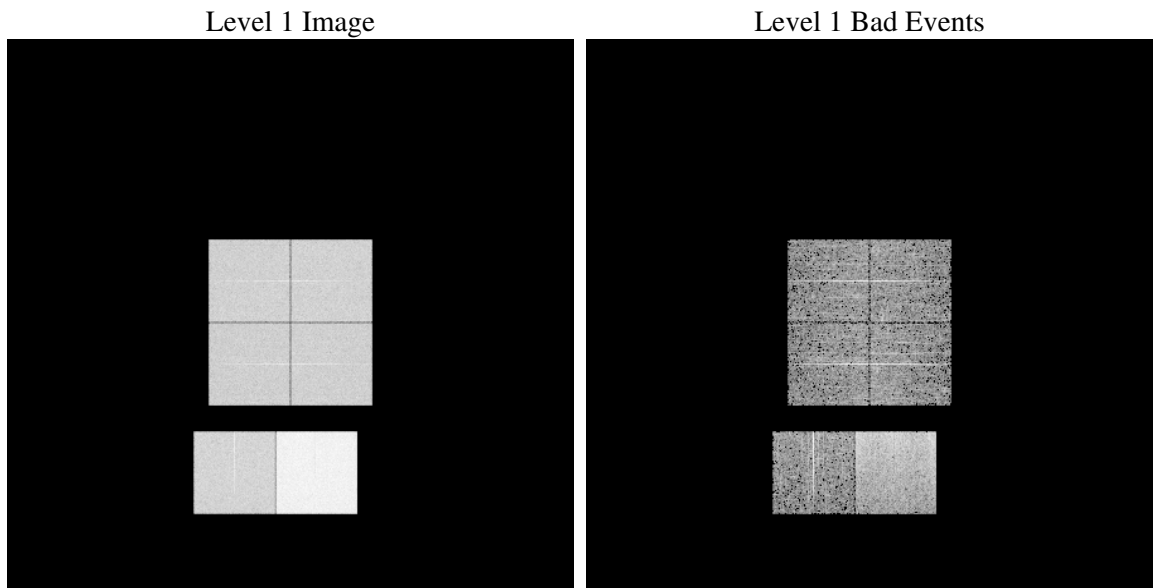
1 Front

| | |
|----------|---|
| seq_num | |
| obs_id | 61729 |
| title | ACIS-012367 diagnostics |
| observer | CHANDRA engineering request/realtime commanding |
| object | |
| dtcycle | 0 |
| cycle | P |
| ra_targ | 0.0 |
| dec_targ | 0.0 |
| ra_nom | 181.01370780418 |
| dec_nom | -33.97366121161 |
| roll_nom | 34.024930135226 |
| revision | 2 |
| ontime | 6002.5348525941 |
| livetime | 5926.527141998 |
| ontime0 | 2521.7120359391 |
| ontime1 | 2563.8452269137 |
| ontime2 | 2372.6244455278 |
| ontime3 | 2417.9989355952 |
| ontime6 | 2631.9067875743 |
| ontime7 | 6002.5348525941 |
| l2events | 1230205 |

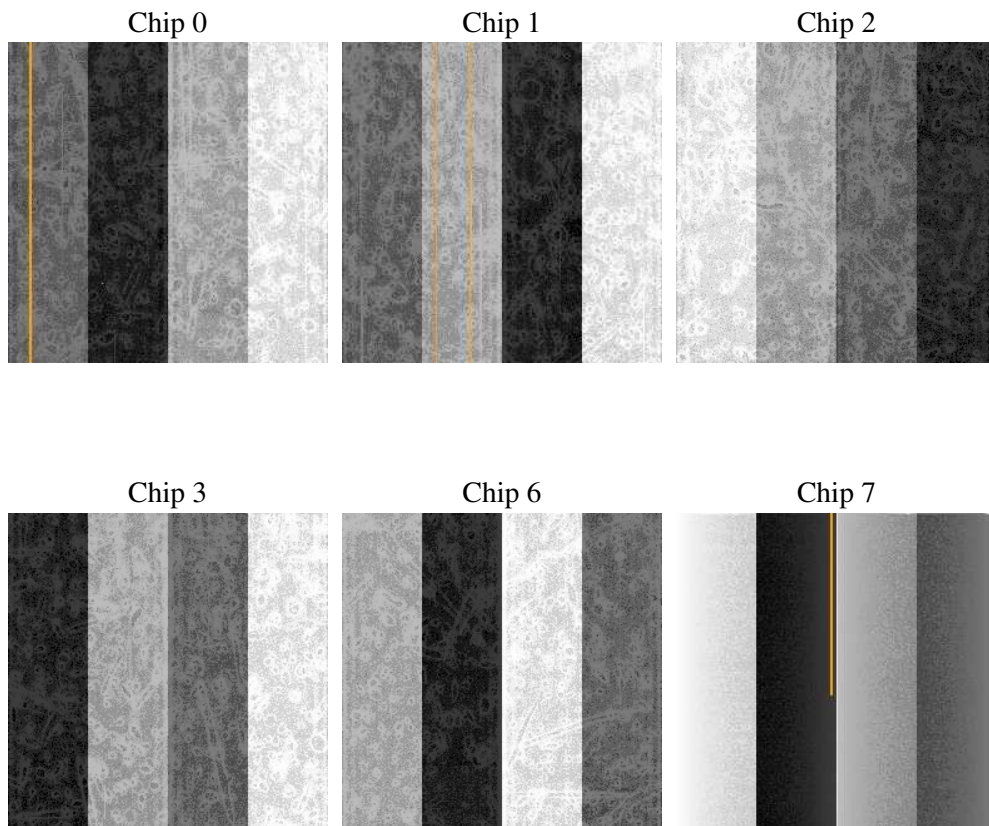
2 OBI

2.1 OBI

2.1.1 Images



2.1.2 Bias



2.1.3 Parameters

| | |
|----------|---------------------|
| obi_num | 0 |
| ascdsver | 7.6.9 |
| caldbver | 3.2.3 |
| date | 2006-11-09T00:43:15 |
| revision | 2 |

| | |
|----------------|-----------------|
| sched_exp_time | 0.0 |
| ontime | 6005.590527758 |
| ontime0 | 2524.767711103 |
| ontime1 | 2566.9009020776 |
| ontime2 | 2375.6801206917 |
| ontime3 | 2421.054610759 |
| ontime6 | 2634.9624627382 |
| ontime7 | 6005.590527758 |
| l1events | 1423204 |

2.1.4 Events

| | ccd 0 | ccd 1 | ccd 2 | ccd 3 | ccd 6 | ccd 7 |
|-----------------|--------|--------|--------|--------|--------|--------|
| level 1 events | 191215 | 195493 | 183470 | 187341 | 210009 | 455676 |
| rejected events | 18846 | 19165 | 18973 | 19822 | 20283 | 43248 |
| rejected % | 9% | 9% | 10% | 10% | 9% | 9% |

| | ccd 0 | ccd 1 | ccd 2 | ccd 3 | ccd 6 | ccd 7 |
|----------------|-------|-------|-------|-------|--------|--------|
| grade 0 events | 95515 | 97480 | 91689 | 93873 | 103611 | 80426 |
| | 49% | 49% | 49% | 50% | 49% | 17% |
| grade 1 events | 539 | 471 | 476 | 511 | 514 | 200 |
| | 0% | 0% | 0% | 0% | 0% | 0% |
| grade 2 events | 30389 | 31253 | 28816 | 29104 | 32625 | 121676 |
| | 15% | 15% | 15% | 15% | 15% | 26% |
| grade 3 events | 10995 | 11016 | 10227 | 10697 | 11687 | 32349 |
| | 5% | 5% | 5% | 5% | 5% | 7% |
| grade 4 events | 10876 | 11192 | 10484 | 10715 | 11756 | 31914 |
| | 5% | 5% | 5% | 5% | 5% | 7% |
| grade 5 events | 1440 | 1402 | 1286 | 1377 | 1653 | 6451 |
| | 0% | 0% | 0% | 0% | 0% | 1% |
| grade 6 events | 24836 | 25600 | 23516 | 23373 | 30271 | 146291 |
| | 12% | 13% | 12% | 12% | 14% | 32% |
| grade 7 events | 16625 | 17079 | 16976 | 17691 | 17892 | 36369 |
| | 8% | 8% | 9% | 9% | 8% | 7% |

2.2 Compared Parameters

| Parameter | Planned | Actual | Parameter | Planned | Actual |
|-----------------------------------|---------------------|----------------------|---------------------------------|-----------|---------|
| Instrument | ACIS | ACIS | Obspar format version number | 6 | 6 |
| Detector | ACIS-012367 | ACIS-012367 | Obspar file type | PREDICTED | ACTUAL |
| Grating | NONE | NONE | Obspar update status | NONE | UPDATED |
| Data mode | FAINT | FAINT | On-chip summing requested | N | N |
| Observation mode | SECONDARY | SECONDARY | Subarray requested | NONE | NONE |
| Pointing RA | 0 | 181.0137078041831 | Alternating exposures requested | N | N |
| Pointing Dec | 0 | -33.97366121160971 | Primary exposure time | 0.000000 | 3.2 |
| Pointing Roll | 0.0 | 34.02493013522641 | | | |
| SIM focus pos (mm) | -0.782348 | -0.6828225247311905 | | | |
| SIM defocus (mm) | 0 | 0.8505141146731063 | | | |
| SIM translation stage pos (mm) | -233.592463 | 250.466033080201 | | | |
| SIM translation stage offset (mm) | 0 | -0.01005468664627074 | | | |
| Observation start time | 99140741.478 | 99140740.709782 | | | |
| Observation start date | 2001-02-21T11:05:41 | 2001-02-21T11:05:40 | | | |
| Observation end time | 99152586.37899999 | 99152585.610239 | | | |
| Observation end date | 2001-02-21T14:23:06 | 2001-02-21T14:23:05 | | | |
| Read mode | TIMED | TIMED | | | |

2.3 Aspect

2.4 Star Slots

2.5 FID Slots

A Summary

A.1 Status

| | |
|----------------------------|------------|
| V&V Scientist | Jen Lauer |
| V&V Date (YYYY-MM-DD) | 2006.11.09 |
| V&V Edition | 1 |
| V&V Disposition and Status | OK |
| V&V Charge Time | 6.00253485 |

A.2 Comments